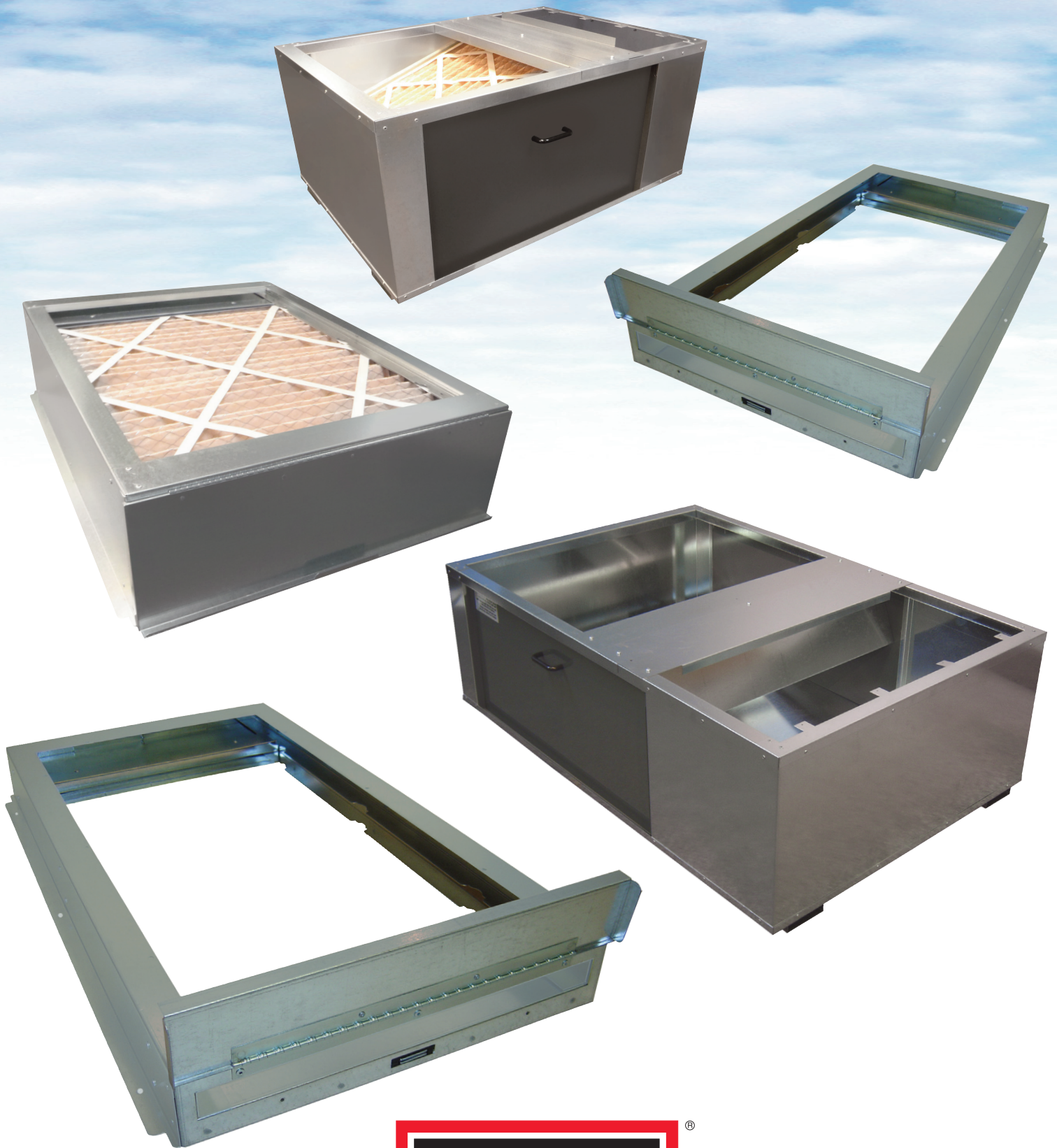


# Totaline® Platforms and Filter Housings



**TOTALINE**®

# Totaline® Platforms and Filter Housings

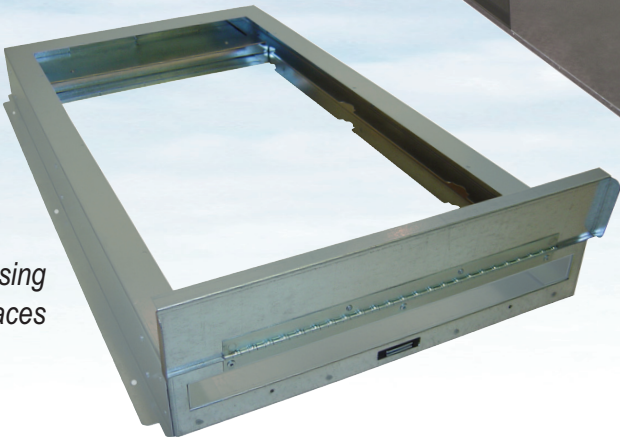
*Totaline® Filter Housing  
for Gas and Electric Air  
Handlers*



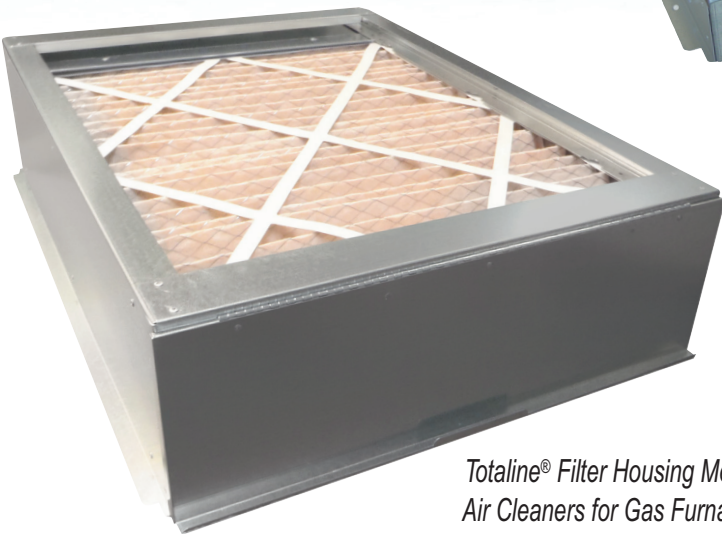
*Totaline® Filter Housing  
for Gas Furnaces*



*Totaline® Filter Housing  
for Gas Furnaces*



*Totaline® Media Air  
Cleaner Platforms for Gas  
& Electric Furnaces*



*Totaline® Filter Housing Media  
Air Cleaners for Gas Furnaces*

## Table of Contents

|  | Page             |
|--|------------------|
| <i>Totaline® Filter Housing for Gas Furnaces . . . . .</i>                             | <i>3 &amp; 4</i> |
| <i>Totaline® Filter Housing for Electric Air Handlers . . . . .</i>                    | <i>5</i>         |
| <i>Totaline® Filter Housing Media Air Cleaners for Gas Furnaces . . . . .</i>          | <i>6</i>         |
| <i>Totaline® Filter Housing for Gas and Electric Air Handlers . . . . .</i>            | <i>7</i>         |
| <i>Totaline® Media Air Cleaner Platforms for Gas &amp; Electric Furnaces . . . . .</i> | <i>8</i>         |



# Totaline® Filter Housing for Gas Furnaces



The Totaline® Air-Tite Series Filter Housings offer the most well-built, sleek designed and easiest to use galvanized sheet metal filter housings on the market, for residential and light commercial use. It allows for easy access to furnace filters—no panels or door to remove. The housing is made to fit all gas furnaces through 5 tons and makes a clean and professional installation. Uses standard size pleated or panel filters.

## Standard Features:

- Fully hinged door with magnetic latch and integrated handle provide a tight seal, eliminating air and debris from entering the filter box from surrounding area.
- Removable rails are easy to change to accommodate different filter sizes.
- Heavy 22 gauge galvanized sheet metal has been die cut for smooth edges.
- Solid one piece wrap cabinet design is spot welded and riveted for sturdiness and long life.
- Tabs have rounded corners, which lessens chances of damage in transit or installation injury.
- Mounting holes are provided for faster installation.
- Individually boxed for convenient shipping and warehousing.
- Limited Lifetime Warranty.



# Totaline® Platforms and Filter Housings

## Totaline® Filter Housing for Gas Furnaces *continued*

### Filter Housing For HEATWAVE Gas Furnace

#### AIR-TITE Housing For 1" Filters

| PART<br>NUMBER     | OUTSIDE<br>DIMENSIONS |   |                  | OPENING          |                  | FILTER<br>SIZE |
|--------------------|-----------------------|---|------------------|------------------|------------------|----------------|
|                    | W                     | H | L                | W1               | L1               |                |
| P102-FHG1425NCHW80 | 15 $\frac{3}{8}$      | 3 | 28 $\frac{1}{2}$ | 12 $\frac{5}{8}$ | 25 $\frac{1}{4}$ | 14 x 25        |
| P102-FHG1625NCHW80 | 17 $\frac{3}{8}$      | 3 | 28 $\frac{1}{2}$ | 14 $\frac{5}{8}$ | 25 $\frac{1}{4}$ | 16 x 25        |
| P102-FHG2025NCHW80 | 21 $\frac{3}{8}$      | 3 | 28 $\frac{1}{2}$ | 18 $\frac{5}{8}$ | 25 $\frac{1}{4}$ | 20 x 25        |
| P102-FHG2424NCHW80 | 25 $\frac{3}{8}$      | 3 | 28 $\frac{1}{2}$ | 22 $\frac{5}{8}$ | 25 $\frac{1}{4}$ | 24 x 24        |
| P102-FHG3025NCHW80 | 31 $\frac{3}{8}$      | 3 | 28 $\frac{1}{2}$ | 28 $\frac{5}{8}$ | 25 $\frac{1}{4}$ | 30 x 25        |

#### AIR-TITE Housing For 1" or 2" Filters

| PART<br>NUMBER     | OUTSIDE<br>DIMENSIONS |   |                  | OPENING          |                  | FILTER<br>SIZE |
|--------------------|-----------------------|---|------------------|------------------|------------------|----------------|
|                    | W                     | H | L                | W1               | L1               |                |
| P102-FHG1425-3HW80 | 15 $\frac{3}{8}$      | 4 | 28 $\frac{1}{2}$ | 12 $\frac{5}{8}$ | 25 $\frac{1}{4}$ | 14 x 25        |
| P102-FHG1625-3HW80 | 17 $\frac{3}{8}$      | 4 | 28 $\frac{1}{2}$ | 14 $\frac{5}{8}$ | 25 $\frac{1}{4}$ | 16 x 25        |
| P102-FHG2025-3HW80 | 21 $\frac{3}{8}$      | 4 | 28 $\frac{1}{2}$ | 18 $\frac{5}{8}$ | 25 $\frac{1}{4}$ | 20 x 25        |
| P102-FHG2424-3HW80 | 25 $\frac{3}{8}$      | 4 | 28 $\frac{1}{2}$ | 22 $\frac{5}{8}$ | 25 $\frac{1}{4}$ | 24 x 24        |
| P102-FHG3025-3HW80 | 31 $\frac{3}{8}$      | 4 | 28 $\frac{1}{2}$ | 28 $\frac{5}{8}$ | 25 $\frac{1}{4}$ | 30 x 25        |

#### AIR-TITE Housing For 1", 2" or 4" Filters

| PART<br>NUMBER     | OUTSIDE<br>DIMENSIONS |   |                  | OPENING          |                  | FILTER<br>SIZE |
|--------------------|-----------------------|---|------------------|------------------|------------------|----------------|
|                    | W                     | H | L                | W1               | L1               |                |
| P102-FHG1425-6HW80 | 15 $\frac{3}{8}$      | 6 | 28 $\frac{1}{2}$ | 12 $\frac{5}{8}$ | 25 $\frac{1}{4}$ | 14 x 25        |
| P102-FHG1625-6HW80 | 17 $\frac{3}{8}$      | 6 | 28 $\frac{1}{2}$ | 14 $\frac{5}{8}$ | 25 $\frac{1}{4}$ | 16 x 25        |
| P102-FHG2025-6HW80 | 21 $\frac{3}{8}$      | 6 | 28 $\frac{1}{2}$ | 18 $\frac{5}{8}$ | 25 $\frac{1}{4}$ | 20 x 25        |
| P102-FHG2424-6HW80 | 25 $\frac{3}{8}$      | 6 | 28 $\frac{1}{2}$ | 22 $\frac{5}{8}$ | 25 $\frac{1}{4}$ | 24 x 24        |
| P102-FHG3025-6HW80 | 31 $\frac{3}{8}$      | 6 | 28 $\frac{1}{2}$ | 28 $\frac{5}{8}$ | 25 $\frac{1}{4}$ | 30 x 25        |

### Filter Housing For Gas Furnace

#### AIR-TITE Housing For 1" Filters

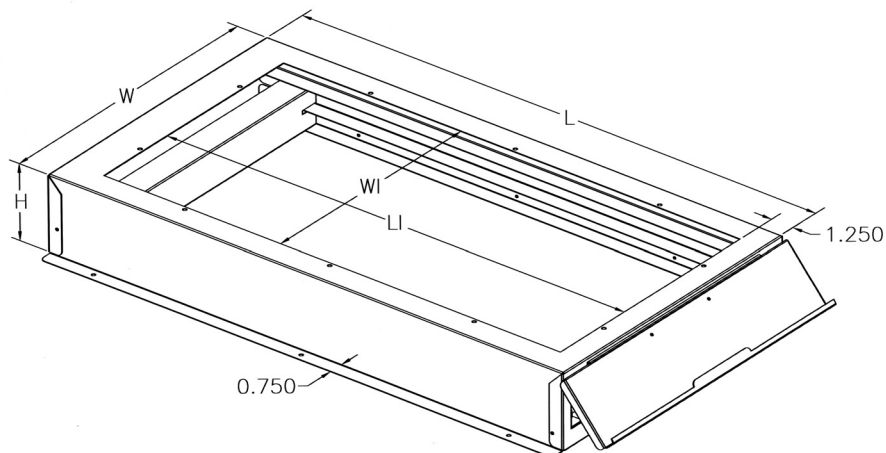
| PART<br>NUMBER | OUTSIDE<br>DIMENSIONS |   |                  | OPENING          |                  | FILTER<br>SIZE |
|----------------|-----------------------|---|------------------|------------------|------------------|----------------|
|                | W                     | H | L                | W1               | L1               |                |
| P102-FHG1425-2 | 15 $\frac{3}{8}$      | 3 | 28 $\frac{1}{2}$ | 12 $\frac{5}{8}$ | 25 $\frac{1}{4}$ | 14 x 25        |
| P102-FHG1625-2 | 17 $\frac{3}{8}$      | 3 | 28 $\frac{1}{2}$ | 14 $\frac{5}{8}$ | 25 $\frac{1}{4}$ | 16 x 25        |
| P102-FHG2025-2 | 21 $\frac{3}{8}$      | 3 | 28 $\frac{1}{2}$ | 18 $\frac{5}{8}$ | 25 $\frac{1}{4}$ | 20 x 25        |
| P102-FHG2424-2 | 25 $\frac{3}{8}$      | 3 | 28 $\frac{1}{2}$ | 22 $\frac{5}{8}$ | 25 $\frac{1}{4}$ | 24 x 24        |
| P102-FHG3025-2 | 31 $\frac{3}{8}$      | 3 | 28 $\frac{1}{2}$ | 28 $\frac{5}{8}$ | 25 $\frac{1}{4}$ | 30 x 25        |

#### AIR-TITE Housing For 1" or 2" Filters

| PART<br>NUMBER | OUTSIDE<br>DIMENSIONS |   |                  | OPENING          |                  | FILTER<br>SIZE |
|----------------|-----------------------|---|------------------|------------------|------------------|----------------|
|                | W                     | H | L                | W1               | L1               |                |
| P102-FHG1425-3 | 15 $\frac{3}{8}$      | 4 | 28 $\frac{1}{2}$ | 12 $\frac{5}{8}$ | 25 $\frac{1}{4}$ | 14 x 25        |
| P102-FHG1625-3 | 17 $\frac{3}{8}$      | 4 | 28 $\frac{1}{2}$ | 14 $\frac{5}{8}$ | 25 $\frac{1}{4}$ | 16 x 25        |
| P102-FHG2025-3 | 21 $\frac{3}{8}$      | 4 | 28 $\frac{1}{2}$ | 18 $\frac{5}{8}$ | 25 $\frac{1}{4}$ | 20 x 25        |
| P102-FHG2424-3 | 25 $\frac{3}{8}$      | 4 | 28 $\frac{1}{2}$ | 22 $\frac{5}{8}$ | 25 $\frac{1}{4}$ | 24 x 24        |
| P102-FHG3025-3 | 31 $\frac{3}{8}$      | 4 | 28 $\frac{1}{2}$ | 28 $\frac{5}{8}$ | 25 $\frac{1}{4}$ | 30 x 25        |

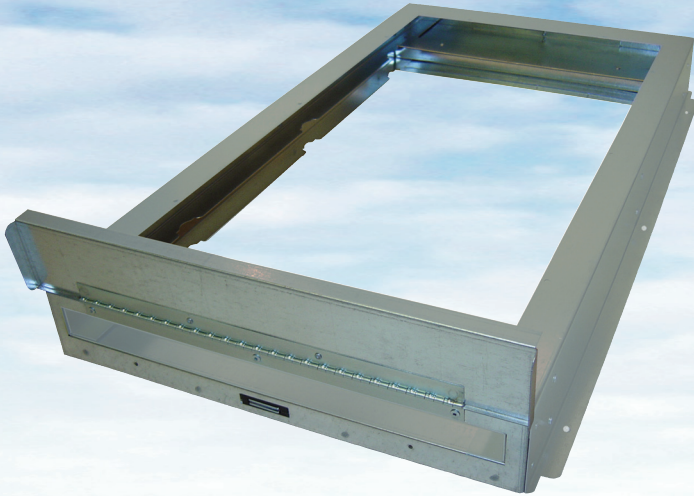
#### AIR-TITE Housing For 1", 2" or 4" Filters

| PART<br>NUMBER | OUTSIDE<br>DIMENSIONS |   |                  | OPENING          |                  | FILTER<br>SIZE |
|----------------|-----------------------|---|------------------|------------------|------------------|----------------|
|                | W                     | H | L                | W1               | L1               |                |
| P102-FHG1425-6 | 15 $\frac{3}{8}$      | 6 | 28 $\frac{1}{2}$ | 12 $\frac{5}{8}$ | 25 $\frac{1}{4}$ | 14 x 25        |
| P102-FHG1625-6 | 17 $\frac{3}{8}$      | 6 | 28 $\frac{1}{2}$ | 14 $\frac{5}{8}$ | 25 $\frac{1}{4}$ | 16 x 25        |
| P102-FHG2025-6 | 21 $\frac{3}{8}$      | 6 | 28 $\frac{1}{2}$ | 18 $\frac{5}{8}$ | 25 $\frac{1}{4}$ | 20 x 25        |
| P102-FHG2424-6 | 25 $\frac{3}{8}$      | 6 | 28 $\frac{1}{2}$ | 22 $\frac{5}{8}$ | 25 $\frac{1}{4}$ | 24 x 24        |
| P102-FHG3025-6 | 31 $\frac{3}{8}$      | 6 | 28 $\frac{1}{2}$ | 28 $\frac{5}{8}$ | 25 $\frac{1}{4}$ | 30 x 25        |





# Totaline® Filter Housing for Electric Air Handlers



The Totaline® Air-Tite Series Filter Housings offer the most well-built, sleek designed and easiest to use galvanized sheet metal filter housings on the market, for residential and light commercial use. It allows for easy access to furnace filters—no panels or door to remove. The housing is made to fit all electric air handlers through 5 tons and makes a clean and professional installation. Uses standard size pleated or panel filters.

## Standard Features:

- Fully hinged door with magnetic latch and integrated handle provide a tight seal, eliminating air and debris from entering the filter box from surrounding area.
- Removable rails are easy to change to accommodate different filter sizes.
- Heavy 22 gauge galvanized sheet metal has been die cut for smooth edges.
- Solid one piece wrap cabinet design is spot welded and riveted for sturdiness and long life.
- Tabs have rounded corners, which lessens chances of damage in transit or installation injury.
- Mounting holes are provided for faster installation.
- Individually boxed for convenient shipping and warehousing.
- Limited Lifetime Warranty.

## AIR-TITE Housing For 1" Filters

| PART<br>NUMBER  | OUTSIDE<br>DIMENSIONS |   |    | OPENING          |                  | FILTER<br>SIZE |
|-----------------|-----------------------|---|----|------------------|------------------|----------------|
|                 | W                     | H | L  | W1               | L1               |                |
| P102-FHE1420-2  | 15 $\frac{3}{8}$      | 3 | 22 | 12 $\frac{5}{8}$ | 18 $\frac{3}{4}$ | 14 x 20        |
| P102-FHE1620-2  | 17 $\frac{3}{8}$      | 3 | 22 | 14 $\frac{5}{8}$ | 18 $\frac{3}{4}$ | 16 x 20        |
| P102-FHE2020-2  | 21 $\frac{3}{8}$      | 3 | 22 | 18 $\frac{5}{8}$ | 18 $\frac{3}{4}$ | 20 x 20        |
| P102-FHE2025-2  | 26 $\frac{3}{8}$      | 3 | 22 | 23 $\frac{5}{8}$ | 18 $\frac{3}{4}$ | 20 x 25        |
| P102-FHE2025-2N | 21 $\frac{3}{8}$      | 3 | 25 | 18 $\frac{5}{8}$ | 21 $\frac{3}{4}$ | 20 x 25        |

## AIR-TITE Housing For 1" or 2" Filters

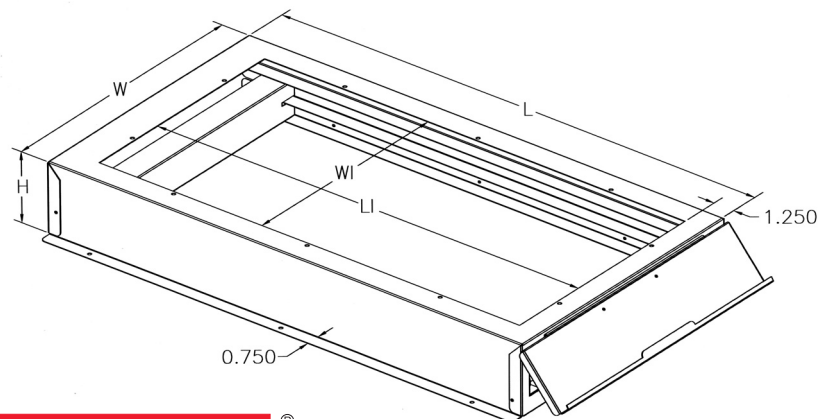
| PART<br>NUMBER  | OUTSIDE<br>DIMENSIONS |   |    | OPENING          |                  | FILTER<br>SIZE |
|-----------------|-----------------------|---|----|------------------|------------------|----------------|
|                 | W                     | H | L  | W1               | L1               |                |
| P102-FHE1420-3  | 15 $\frac{3}{8}$      | 4 | 22 | 12 $\frac{5}{8}$ | 18 $\frac{3}{4}$ | 14 x 20        |
| P102-FHE1620-3  | 17 $\frac{3}{8}$      | 4 | 22 | 14 $\frac{5}{8}$ | 18 $\frac{3}{4}$ | 16 x 20        |
| P102-FHE2020-3  | 21 $\frac{3}{8}$      | 4 | 22 | 18 $\frac{5}{8}$ | 18 $\frac{3}{4}$ | 20 x 20        |
| P102-FHE2020-3T | 23 $\frac{1}{2}$      | 4 | 22 | 19 $\frac{3}{4}$ | 18 $\frac{3}{4}$ | 20 x 20        |
| P102-FHE2025-3  | 26 $\frac{3}{8}$      | 4 | 22 | 23 $\frac{5}{8}$ | 18 $\frac{3}{4}$ | 20 x 25        |
| P102-FHE2025-3N | 21 $\frac{3}{8}$      | 4 | 25 | 18 $\frac{5}{8}$ | 21 $\frac{3}{4}$ | 20 x 25        |

## AIR-TITE Housing For 1", 2" or 4" Filters

| PART<br>NUMBER  | OUTSIDE<br>DIMENSIONS |   |    | OPENING          |                  | FILTER<br>SIZE |
|-----------------|-----------------------|---|----|------------------|------------------|----------------|
|                 | W                     | H | L  | W1               | L1               |                |
| P102-FHE1420-6  | 15 $\frac{3}{8}$      | 6 | 22 | 12 $\frac{5}{8}$ | 18 $\frac{3}{4}$ | 14 x 20        |
| P102-FHE1620-6  | 17 $\frac{3}{8}$      | 6 | 22 | 14 $\frac{5}{8}$ | 18 $\frac{3}{4}$ | 16 x 20        |
| P102-FHE2020-6  | 21 $\frac{3}{8}$      | 6 | 22 | 18 $\frac{5}{8}$ | 18 $\frac{3}{4}$ | 20 x 20        |
| P102-FHE2020-6T | 23 $\frac{1}{2}$      | 6 | 22 | 19 $\frac{3}{4}$ | 18 $\frac{3}{4}$ | 20 x 20        |
| P102-FHE2025-6  | 26 $\frac{3}{8}$      | 6 | 22 | 23 $\frac{5}{8}$ | 18 $\frac{3}{4}$ | 20 x 25        |
| P102-FHE2025-6N | 21 $\frac{3}{8}$      | 6 | 25 | 18 $\frac{5}{8}$ | 21 $\frac{3}{4}$ | 20 x 25        |

## AIR-TITE Housing For 5 $\frac{1}{4}$ " MERV 11 Media Filters

| PART<br>NUMBER  | OUTSIDE<br>DIMENSIONS |                 |                  | OPENING          |                  | FILTER<br>SIZE                         | REPLACEMENT<br>FILTER |
|-----------------|-----------------------|-----------------|------------------|------------------|------------------|--|-----------------------|
|                 | W                     | H               | L                | W1               | L1               |  |                       |
| P102-FHE1420-7  | 15 $\frac{3}{8}$      | 7 $\frac{3}{8}$ | 22 $\frac{1}{2}$ | 12 $\frac{1}{2}$ | 18               | 14 x 22                                | P102-MAH-1056A        |
| P102-FHE1620-7  | 17 $\frac{3}{8}$      | 7 $\frac{3}{8}$ | 22 $\frac{1}{2}$ | 14 $\frac{5}{8}$ | 18               | 15 $\frac{7}{16}$ x 21 $\frac{15}{16}$ | P102-MFAH-S           |
| P102-FHE2020-7  | 21 $\frac{3}{8}$      | 7 $\frac{3}{8}$ | 22 $\frac{1}{2}$ | 18 $\frac{1}{2}$ | 18               | 19 $\frac{3}{4}$ x 22                  | P102-MAH1056B         |
| P102-FHE2025-7  | 26 $\frac{3}{8}$      | 7 $\frac{3}{8}$ | 22 $\frac{1}{2}$ | 23 $\frac{1}{2}$ | 18               | 20 $\frac{1}{4}$ x 25 $\frac{3}{8}$    | P102-2025             |
| P102-FHE2025-7N | 21 $\frac{3}{8}$      | 7 $\frac{3}{8}$ | 25 $\frac{1}{2}$ | 18 $\frac{1}{2}$ | 21 $\frac{1}{2}$ | 20 $\frac{1}{4}$ x 25 $\frac{3}{8}$    | P102-2025             |
| P102-FHE2024-7  | 23 $\frac{3}{8}$      | 7 $\frac{3}{8}$ | 24 $\frac{1}{2}$ | 20 $\frac{1}{2}$ | 20               | 21 $\frac{1}{8}$ x 24                  | P102-MFAH-L           |



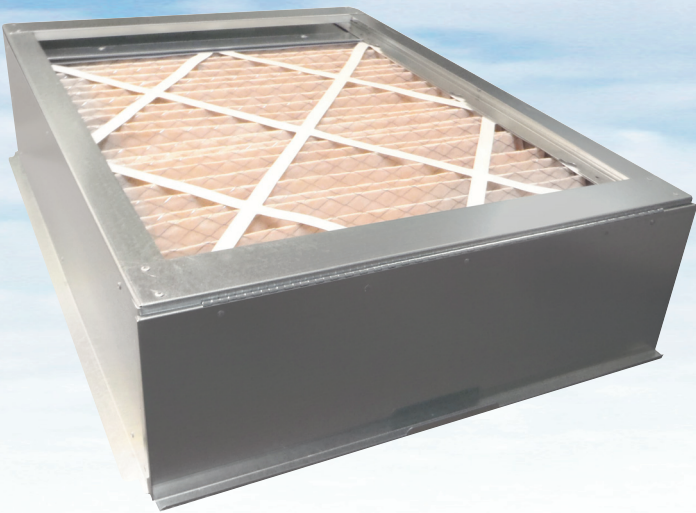
**TOTALINE**

# Totaline® Platforms and Filter Housings

## Totaline® Filter Housing Media Air Cleaners for Gas Furnaces

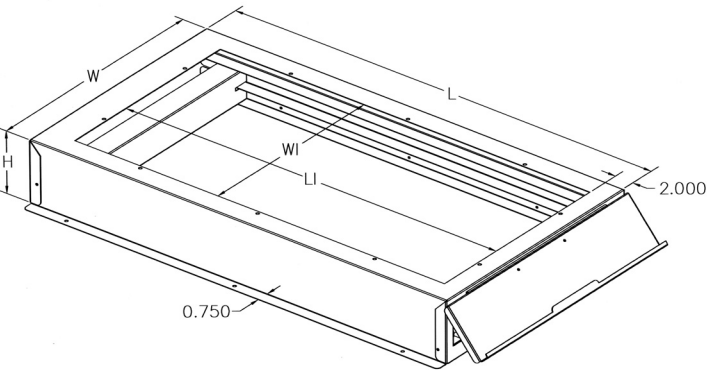
The Totaline® Air-Tite Series Filter Housing Media Air Cleaners offer the most well-built, sleek designed and easiest to use galvanized sheet metal filter housings on the market, for residential and light commercial use.

- Allows for easy access to furnace filters—no panels or door to remove.
- Made to fit gas upflow furnaces.
- Makes a clean and professional installation.
- High efficiency MERV 11 Media Filter is an extra deep, 5¼ inch, 24 pleat filter which contains more media material than other filters on the market. More surface area means more collection area, longer filter life and lower static pressure. Filter lasts up to one year.



### Standard Features:

- Fully hinged door with magnetic latch and integrated handle provide a tight seal, eliminating air and debris from entering the filter box from surrounding area.
- Heavy 22 gauge galvanized sheet metal has smooth edges allowing for a smooth installation.
- Solid cabinet design for sturdiness and long life.
- Tabs have rounded corners.
- Mounting holes are provided for faster installation.
- Individually boxed for convenient shipping and warehousing.
- Limited Lifetime Warranty.



| Model             | Outside Dimensions |    |     | Opening |     | Filter Size | Replacement Filter |
|-------------------|--------------------|----|-----|---------|-----|-------------|--------------------|
|                   | W                  | H  | L   | W1      | L1  |             |                    |
| P102-FHG1425-7M1* | 17⅞                | 7⅞ | 28½ | 12⅝     | 24⅜ | 16 x 25     | P102-1625          |
| P102-FHG1625-7M1  | 17⅞                | 7⅞ | 28½ | 14⅝     | 24⅜ | 16 x 25     | P102-1625          |
| P102-FHG2025-7M8  | 21⅞                | 7⅞ | 28½ | 18⅞     | 24⅜ | 20 x 25     | P102-2025          |

\* Use for 14 inch wide furnace only.

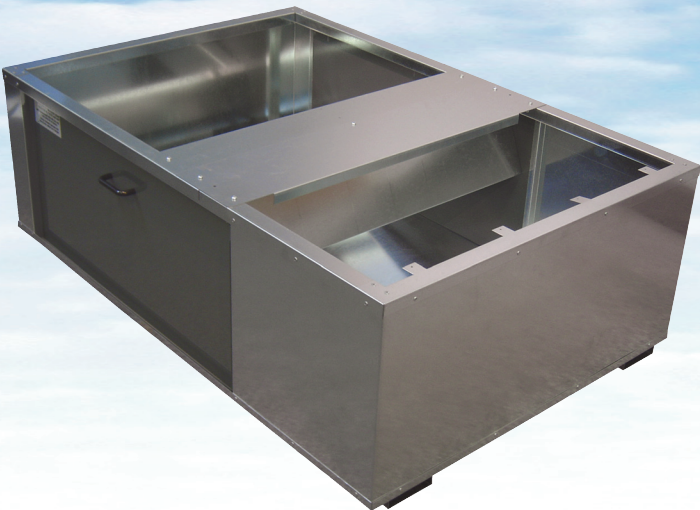


# Totaline® Filter Housing for Gas & Electric Air Handlers

The Totaline® Perfect-Platform Series Filter Housings offer the most well-built, sleek designed and easiest to use galvanized sheet metal filter housings on the market, for residential and light commercial use. The space saving design for vertical installations, keeps furnace off floor eliminating need for wooden platform, thereby reducing installation time and costs.

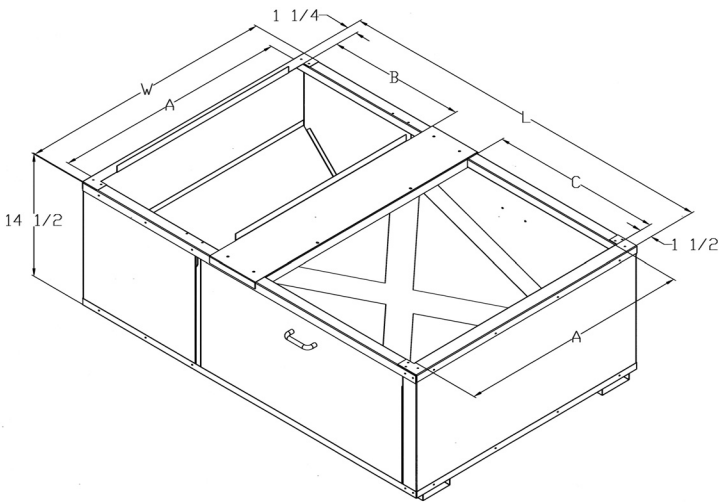
The Filter Housing allows for easy access to furnace filters without having to enter furnace.

The Filter Housing uses 1", 2" or 4" standard size pleated or panel filters which are positioned on an angle to maximize surface area. They are made to fit 1-3 ton or 3.5 ton electric air handlers or gas furnaces.



**Standard Features:**

- Two, pull-out doors with handle allow filter access from either side.
- Adjustable inlet duct opening replaces need for field forming transition, significantly reducing installation time.
- Removable rails are easy to change to accommodate different filter sizes.
- Heavy gauge galvanized sheet metal has been die cut for smooth edges.
- Solid one piece wrap cabinet design is spot welded and riveted for sturdiness and long life.
- Individually boxed for convenient shipping and warehousing.
- Limited Lifetime Warranty.



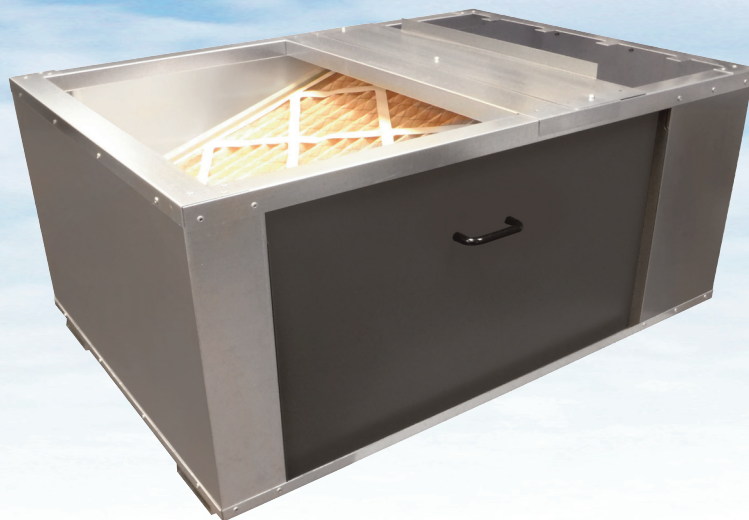
| PART NUMBER | W   | L  | A   | B     | C      | FILTER SIZE |
|-------------|-----|----|-----|-------|--------|-------------|
| P102-FB2832 | 28½ | 32 | 26½ | 8     | 13½    | 20 x 25     |
| P102-FB2843 | 28½ | 43 | 26½ | 10/12 | 19/22½ | 24 x 24     |
| P102-FB2232 | 22½ | 32 | 20½ | 9½    | 14½    | 20 x 20     |
| P102-FB2240 | 22½ | 40 | 20½ | 12    | 20     | 20 x 25     |



# Totaline® Platforms and Filter Housings

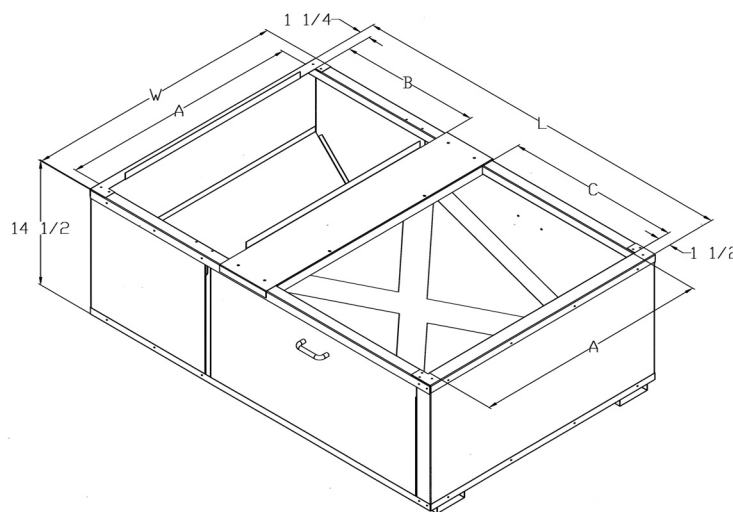
## Totaline® Media Air Cleaner Platforms for Gas & Electric Furnaces

The Totaline® Perfect-Platform Series Media Air Cleaner Platform from Totaline® offers the most well-built, sleek designed and easiest to use galvanized sheet metal filter housings on the market, for residential and light commercial use. The space saving design for vertical installations, keeps furnace off the floor allowing a cleaner, more professional installation. The platform helps eliminate the possibility of dust, pet hair, insects, rodents, water or sewer backup from entering the furnace. The platform also allows the filter to work at maximum efficiency by eliminating the need for transitions, deflectors or turning vanes, thereby saving installation time and costs.



### Standard Features:

- High efficiency MERV 11 Media Filter is an extra deep, 5¼ inch, 24 pleat filter which contains more media material than other filters on the market. More surface area means more collection area, longer filter life and lower static pressure. Filter lasts up to one year.
- Two, pull-out doors with handles allow filter access from both sides.
- Adjustable inlet duct opening replaces need for field forming transition, significantly reducing installation time.
- Heavy 22 gauge galvanized sheet metal has been die cut for smooth edges, allowing for a smoother installation.
- Individually boxed for convenient shipping and warehousing.
- Limited Lifetime Warranty.



| PART NUMBER    | W   | L  | A   | B     | C      | FILTER SIZE | REPLACEMENT FILTER |
|----------------|-----|----|-----|-------|--------|-------------|--------------------|
| P102-FB2832-M8 | 28½ | 32 | 26½ | 8     | 13½    | 20 x 25     | P102-2025          |
| P102-FB2843-M8 | 28½ | 43 | 26½ | 10/12 | 19/22½ | 20 x 25     | P102-2025          |
| P102-FB2232-M2 | 22½ | 32 | 20½ | 9½    | 14½    | 20 x 20     | P102-2020          |
| P102-FB2240-M8 | 22½ | 40 | 20½ | 12    | 20     | 20 x 25     | P102-2025          |

