

SMMSe / SHRMe VRF Indoor Unit MMD-AP0214BH2UL-1—Concealed Duct

TOSHIBA
Carrier

Submittal Data

Job Data _____ Location _____
 Buyer _____ Buyer PO # _____ Carrier # _____
 Unit Number _____ Model Number _____
 Performance Data Certified By _____ Date _____



SMMSe / SHRMe CONCEALED DUCT FEATURES

- R-410A Refrigerant
- Eleven sizes from 7,500 to 48,000 Btu/h
- Standard condensate pump with 10.7 in. lift capability
- Quiet operation, as low as 27.5 dBA
- Rear return configurable for bottom return
- Auto or manually set three fan speeds
- One-inch track for field-supplied filters
- Five-year parts limited warranty

INDOOR UNIT MODEL		MMD-AP0214BH2UL-1
PERFORMANCE		
Cooling Rated Capacity	Btu/h	21,000
Heating Rated Capacity	Btu/h	24,000
Fan Type (Qty)	Centrifugal (1)	
External Static Pressure (ESP)	in. WG	0.15-0.25 (Factory default) 0.35-0.46
Standard Airflow (H / M / L)	CFM	694 / 555 / 475
Sound Pressure (H / M / L)**	dBA	37 / 35 / 34
ELECTRICAL		
Power Supply	V/Ph/Hz	208-230/1/60
Power Consumption (Input)	kW	0.091
Full Load Amps (FLA)	A	1.4
Minimum Circuit Amps (MCA)	A	1.8
Maximum Overcurrent Protection (MOCP)	A	15.0

MOTOR		
Motor Type	DC Inverter Driven	
Motor Watts	150	
PHYSICAL DATA		
Pipe Connection Size - Liquid	in.	3/8 (Flare)
Pipe Connection Size - Suction	in.	5/8 (Flare)
Pipe Connection Size - Drain (OD)	in.	1-1/4
Pipe Connection Size - Drain (ID)	in.	1
Refrigerant	R-410A	
External Finish	Zinc Hot Dipped Steel Plate	
Unit Width	in.	53-1/4
Unit Height	in.	12-5/8
Unit Depth	in.	31-1/2
Net Weight	lb	119

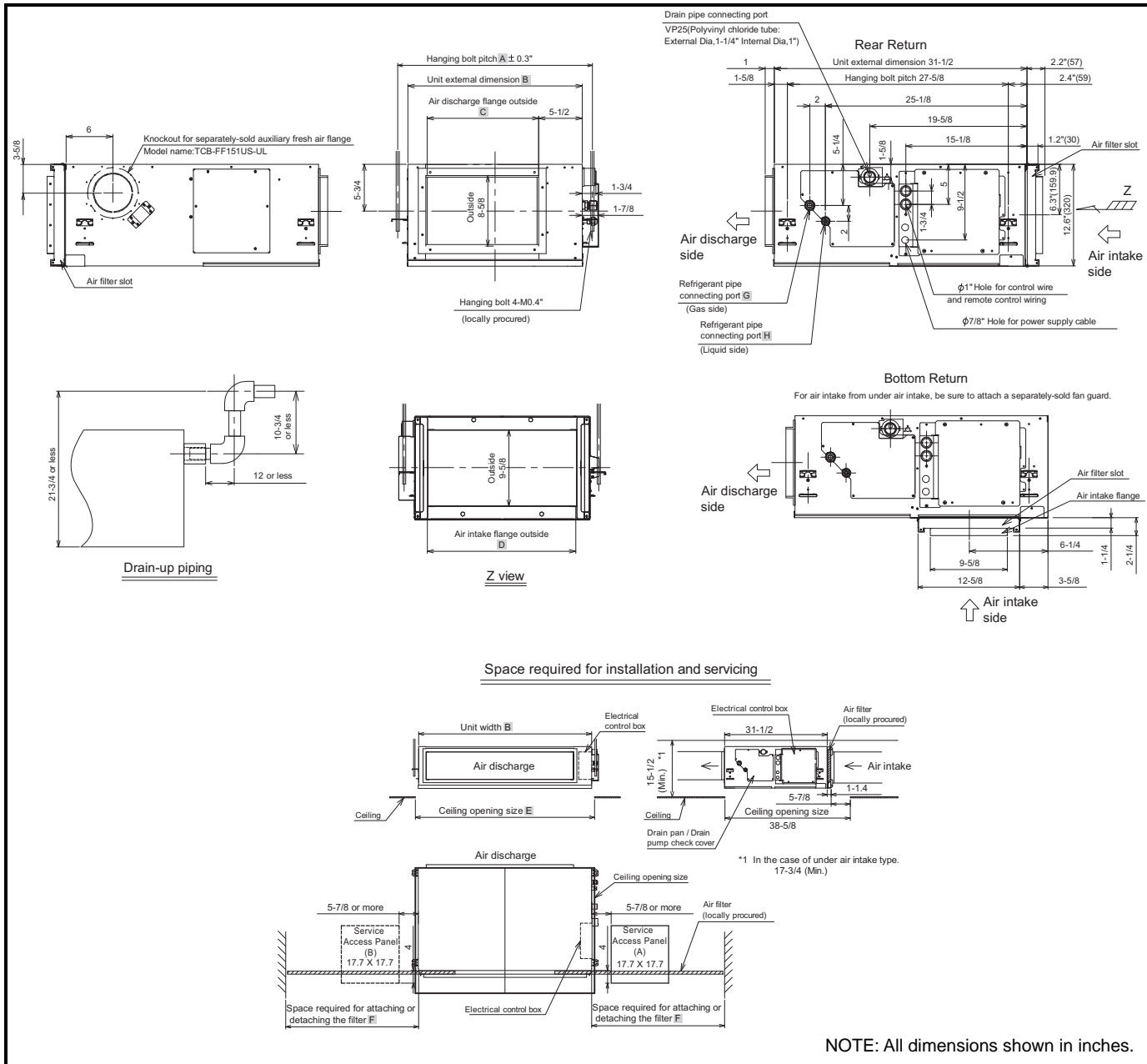
** The actual values in an external operating environment are generally higher than the indicated values due to ambient noise.

ACCESSORIES

- ☐ Wired Remote Controller (7-Day Programmable) RBC-AMS54E-UL
- ☐ Simple Wired Remote Control RBC-AS41UL
- ☐ Stand-Alone Receiver with Wireless Remote TCB-AX32UL
- ☐ Remote Sensor TCB-TC41LUL
- ☐ Wired Remote Controller - RBC-AMT32UL
- ☐ Fan Guard Required with Bottom Return Applications TCB-IG211BUL
- ☐ Auxiliary OA Flange TCB-FF151US-UL

Manufacturer reserves the right to discontinue, or change at any time, specifications or designs without notice and without incurring obligations.

DIMENSIONAL DRAWING
CONCEALED DUCT MMD-AP0214BH2UL-1



* Provide service access panel (A) for maintaining electrical control box, filter, drain pump, drain pipe, and refrigerant pipe.

(If you pull out the filter in the opposite direction of the electrical control box, service access panel B is required.)

* Field supplied and field installed filter.

* Provide service access panel for maintaining the fan, fan motor, etc.

Model	A	B	C	D	E	F	G	H	Air filter wide
AP0214BH2UL-1	55-3/4	53-1/4	45-3/8	50-1/8	55-1/8	40-1/2	Ø5/8	Ø3/8	52(20+20+12)

