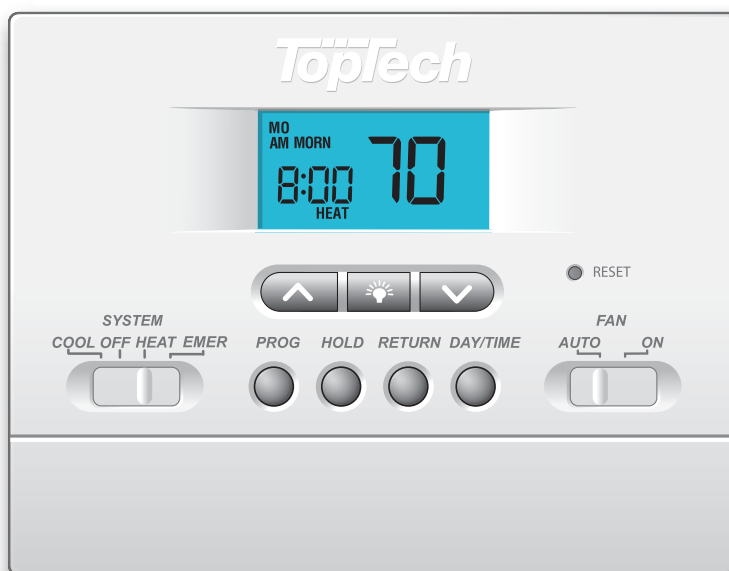


TT-P-421

5-2 Day Programmable

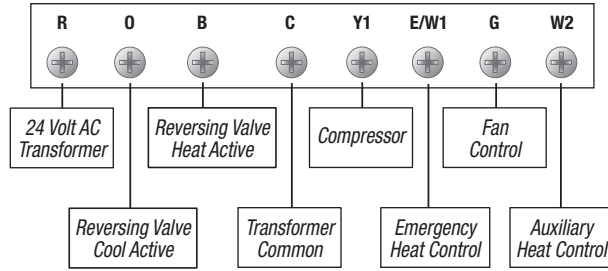
Multi-Stage 2 Heat / 1 Cool
Conventional or Heat Pump Thermostat



Features

- Dual Powered – Hardwired or Battery
- 5-2 Day Separate Weekday / Weekend Programming
- Large Display with Bright Blue Backlight
- Adjustable Temperature Set Point Limits
- Non-Volatile Memory Retains User Settings
- Filter Check Monitor
- Adaptive Recovery Mode (ARM™)
- Adjustable 1st and 2nd Stage Temperature Differential
- ESD Guard™ Electronic Circuitry
- Compressor Short Cycle Protection
- Separate Heating and Cooling Set Point Program Times and Temperatures
- Temporary Program Override for 4 Hours or Until Next Set Point
- Programmable Extended Hold Mode
- Front Access Reset Button
- F° / C° Switch
- Auxiliary Heat Status Indicator
- Mount to Horizontal Box
- Easy Access Front Battery Door
- Separate O & B Terminals
- Meets California Title 24 Guidelines

TT-P-421 Terminal Designations



Architectural Specifications

The digital programmable thermostat shall be a TopTech®, model number TT-P-421, 3.72” high x 4.75” wide x 1.12” deep, powered independently with either 24 Volt AC or with two “AA” alkaline batteries (3.0 Volt DC). The thermostat shall be compatible with multi-stage conventional or heat pump systems with up to two stages of heating and one stage of cooling. The thermostat shall have a bright blue backlight display, adjustable temperature set point limits, front loading battery door and separate sub-base for trouble free installation. Temperature control range shall be between 45° and 90° F (7° and 32° C), accuracy of +/- 1° F (+/- .5° C), humidity range between 5% and 95% relative humidity. The thermostat shall include non-volatile memory to retain user settings, filter check monitor, adaptive recovery mode (ARM™), separate heating and cooling set point program times and temperatures, and auxiliary heat indicator. Thermostat shall have three level low battery indication and a front reset button will return user settings to default values when pressed. The thermostat can be mounted to a horizontal junction box.

Product Specifications

Dimensions:	3.72” x 4.75” x 1.12”
Electric Rating:	24 Volt AC (18-30 Volt AC) 1 amp maximum load per terminal 3 amp total maximum load (all terminals)
AC Power:	18-30 Volt AC
DC Power:	3.0 Volts DC (2 “AA” Alkaline batteries included)
Compatibility:	Multi-stage conventional or heat pump systems with up to two stages of heating and one stage of cooling
Control Range:	45° to 90° F (7° to 32° C)
Display Range:	40° to 99° F (4° to 37° C)
Accuracy:	+/- 1° F (+/- .5° C)
Temperature Differential:	1st Stage - .5°, 1°, or 2° F (.25°, .5°, or 1° C) 2nd Stage - 2°, 3°, 4°, 5°, or 6° F (1°, 1.5°, 2°, 2.5°, or 3° C)
Storage Temperature:	14° to 140° F (-10° to 60° C)
Operating Humidity:	5% to 95% Relative Humidity
Terminations:	R, O, B, C, Y1, E/W1, G, W2

Shipping Information

INDIVIDUAL CARTON

Dimensions: 3.75” x 5.5” x 1.4”
Weight: .45 lbs.

MASTER CARTON

Quantity: 12
Dimensions: 9” x 4.25” x 11.5”
Cubic Feet: .25
Weight: 5.7 lbs.

TopTech® TT-P-421 Replaces*

Honeywell®	TH2210, TH4210, T8011, T8024
White-Rodgers®	1F72-151
Braeburn®	2200, 2200NC
Robertshaw®	RS3210, 8625-1, 9615, 9620
ICM®	SC3201
LuxPro®	PSPH521L

*Verify specific application requirements.
All trademarks are the property of their respective owners.

Accessories

2950 Universal Wall Plate (6.5” x 6.5” x .125”)
5970 Universal Thermostat Guard

FREE Contractor Branding Available!

Visit our website (www.braeburnonline.com) for more information, contact your local distributor or call our sales department toll-free at 866.268.5599 (U.S.), +1.630.844.1968 (Outside the U.S.).

Date: _____

Engineer: _____

Job Name: _____

Model No.: _____

Location: _____

Submitted By: _____

Contractor: _____

Submitted For Approval: _____ Record: _____