



# Tecumseh Compressor Company

## Hermetic Condensing Units

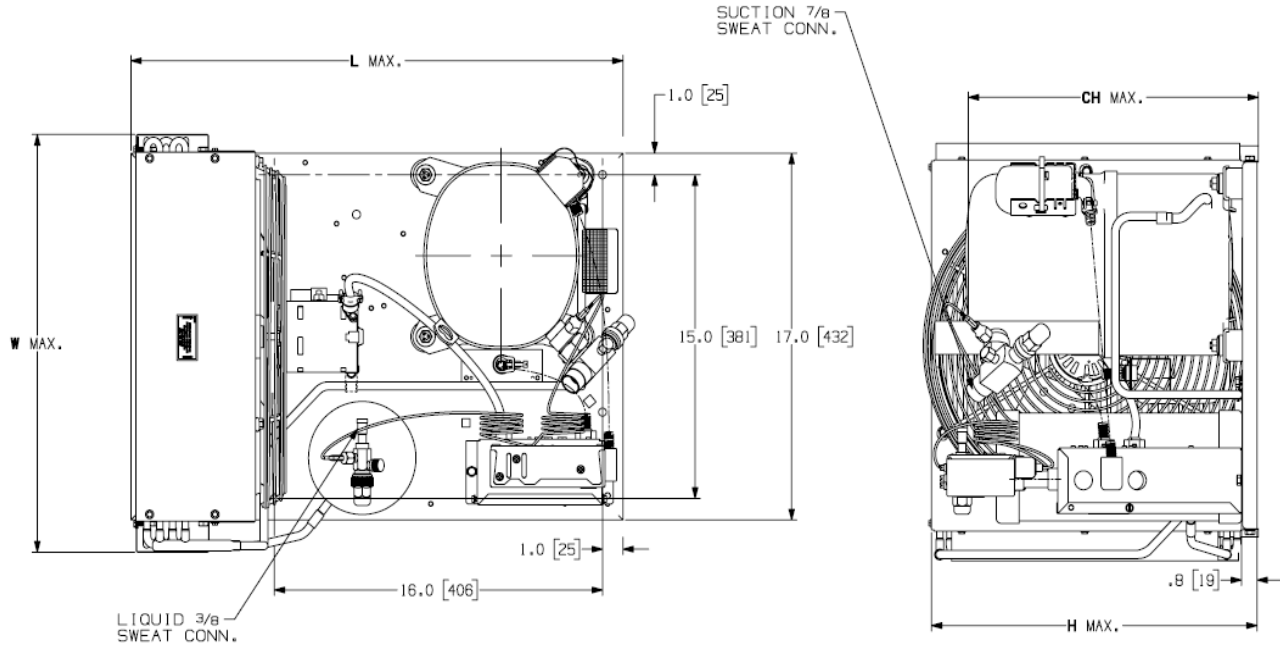
Model: AWA7512ZXDXC

BoM: 2B3217-1

R-404a

1 1/2 HP

Air Cooled



Model	Dimensions, inches				Line Connection*		Pumpdown 90 °F 90% 9.8 lbs	Air CFM 780	Oil Ch Oz. 38	Gr. Wt. Lbs. 130
	L	W	H	CH	Suction 7/8" S	Liquid 3/8" S				
<b>AWA7512ZXDXC</b>	24.0	19.4	16.2	15.6	7/8" S	3/8" S				

\* F = Flare, S = Solder, RF or RS = Rotolock with Flare or Solder Connections, C = Compression Fitting  
Factory charge: 20 PSIG Nitrogen – **MUST BE EVACUATED**

Evaporator T.		Ambient Temperatures											
		80°F			90°F			100°F			110°F		
°F	PSIG	BTUH	Watts	Cond T	BTUH	Watts	Cond T	BTUH	Watts	Cond T	BTUH	Watts	Cond T
-10	23.6	6819	1498	96	5910	1495	104	5386	1471	113	3940	1410	121
-5	27.9	7817	1603	98	6769	1606	106	6013	1587	115	4596	1538	123
0	32.6	8871	1709	101	7686	1720	109	6707	1705	117	5299	1669	126
5	37.7	9982	1817	104	8661	1835	111	7467	1826	120	6047	1801	128
10	43.2	11150	1927	106	9694	1951	114	8294	1950	123	6842	1935	131
15	49.1	12374	2038	109	10785	2069	117	9187	2076	126	7684	2070	133
20	55.4	13654	2151	113	11934	2189	120	10148	2205	128	8571	2207	135
25	62.2	14991	2265	116	13142	2311	123	11174	2336	131	9505	2346	138
30	69.6	16384	2381	119	14407	2434	126	12267	2469	134	10486	2486	141

### 60 Hz Performance

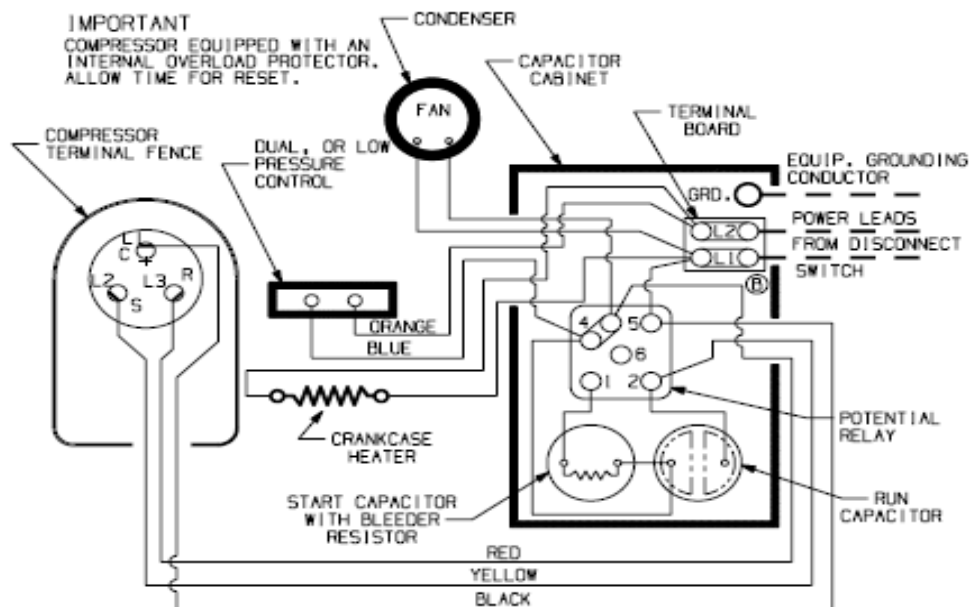
Return gas temp. 40°F, 5°F sub cooling

**Specifications/ Parts:**

<b>Model</b>	<b>AWA7512ZDXC</b>
Unit Bill of Material	2B3217-1
Nominal Volts-Hz-Ph	208-230-60-1
Refrigeration Range	-10° to +30°
Design Pressure Low	181
Design Pressure High	450
Voltage Range	187 to 253
Min. Circuit Ampacity	16.7
Max. Fuse Size (amps)	30
Compressor Model	AWA7512ZXD
Comp. Bill of Material	AW611ET-111-P2
Compressor RLA/LRA	12.9 / 73.0
Overload	INTERNAL
Relay	820ARR3K54
Run Capacitor	85PR370F17
Run Capacitor Rating	35 MFD @ 370V
Start Capacitor	85PS330D68
Start Capacitor Rating	130-156 MFD @ 330V
Capacitor Cabinet Assy.	AE1397-010A
Unit Drawing	DGU1918
Wiring Diagram	91028-1

Fan Motor	810F050C20
Fan Motor RLA	0.7
Fan Blade	51568-1
Fan Guard	70831
Fan Shroud	70727-2
Low Pressure Control	N/A
Dual Pressure Control	14955206
Condenser	50857-1
Receiver Tank	51081-1
Liquid Valve	31581-1
Rotolock Valve Gasket	30334
Suction Valve	31529-1
Crankcase Heater	91022-1

**Electrical Diagram**



- ELECTRICIAN TO MAKE THE FOLLOWING CONNECTIONS ONLY:
- CONNECT INCOMING POWER LEADS FROM DISCONNECT SWITCH TO L1 AND L2 IN CAPACITOR CABINET CONSISTENT WITH NAMEPLATE VOLTAGE AND FREQUENCY. USE COPPER CONDUCTORS ONLY. (EMPLOYER DES CONDUCTEURS DE CUIVRE SEULEMENT.) PROVIDE EQUIPMENT GROUNDING CONDUCTOR. USE 75°C (MIN.) WIRING.
- NOTE: A - WIRING IS NOT AFFECTED IF CRANKCASE HEATER AND ITS CONNECTIONS ARE OMITTED.  
B - WITH ANY T.C.Co. APPROVED START RELAY USED, CONNECT LEADS TO SAME NUMBERED TERMINALS REGARDLESS OF LOCATION.  
C - WIRING IS NOT AFFECTED IF DUAL OR LOW PRESSURE CONTROL IS SUPPLIED BY CUSTOMER.

CHG	PART No.
B	91028-1