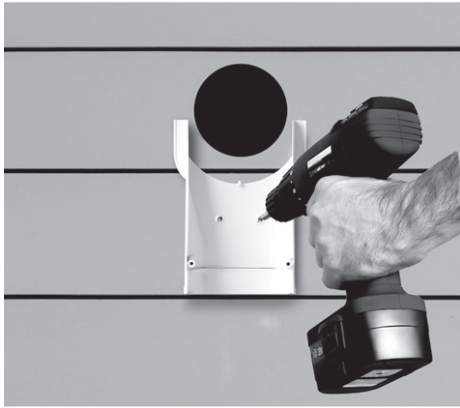
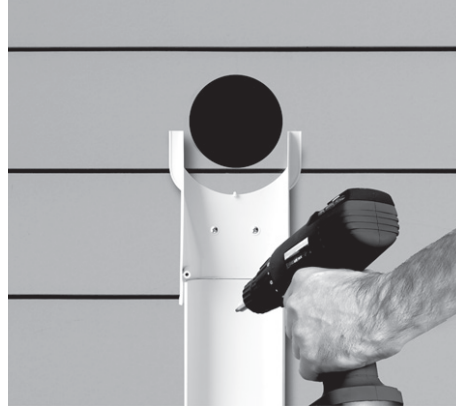


# SlimDuct

## Installation instructions



(1) Determine the path which the lineset will follow and strike a chalk line to mark the surface material. Attach the base only of all fittings first (ducting will be placed last), along the marked path, using fasteners of sufficient length (not provided). Pre-drill where necessary. Duct must terminate with a **fitting to prevent cover from sliding out of position.**



(2) Once all fitting bases are secured to the siding, measure and cut SD Ducting to fit as needed. Remember to account for some seasonal expansion and contraction. Install and fasten SD Ducting bases. Attach bases only to structure through provided punch outs using fasteners of sufficient length (not provided).



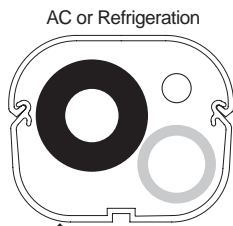
(3) Secure optional SL300 straps (strap kit not included) evenly spaced inside Slimduct. Run lineset, drain hose, wiring etc. over the fitting/duct bases and straps. Tighten straps to secure.



(4) Snap straight duct top over mating straight base pieces. Seat fitting tops over mating fitting bases and secure with provided stainless screws. Duct must terminate with a **fitting to prevent cover from sliding out of position.**

## Typical lineset\* capacity

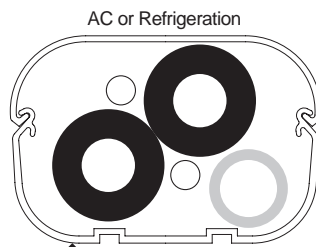
### SD-77 27/8" W x 23/8" D



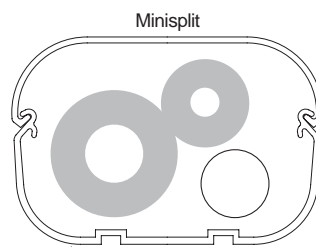
SD-77 w/Single 3/4" Lineset  
BTU - 35,000  
Suction Line - 1 1/8" OD  
(Insulation) - 1/2"  
Liquid Line - 1/2" OD  
Drain Line - 3/4" PVC

\* Lineset size may change on Seer Rating

### SD-100 4" W x 2 3/4" D

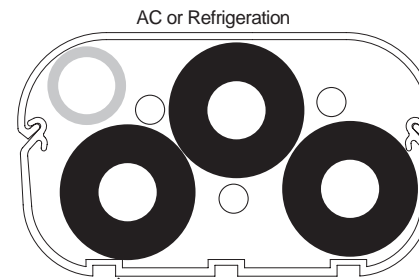


SD-100 w/Dual 3/4" Lineset  
BTU - 36,000  
Suction Lines - 3/4" OD  
(Insulation) - 3/8"  
Liquid Lines - 3/8" OD  
Drain Line - 3/4" PVC

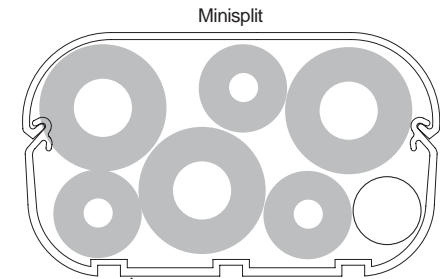


SD-100 w/Single 3/4" Lineset  
BTU - 42,000  
Suction Line - 3/4" OD  
(Insulation) - 1/2"  
Liquid Line - 3/8" OD  
(Insulation) - 1/2"  
Drain Hose - 7/8" OD

### SD-140 5 3/8" W x 3 1/8" D



SD-140 w/Triple 3/4" Lineset  
BTU - 36,000  
Suction Lines - 3/4" OD  
(Insulation) - 1/2"  
Liquid Lines - 3/8" OD  
Drain Line - 3/4" PVC



SD-140 w/Triple 3/4" Lineset  
BTU - 42,000  
Suction Lines - 3/4" OD  
(Insulation) - 1/2"  
Liquid Lines - 3/8" OD  
(Insulation) - 1/2"  
Drain Hose - 7/8" OD