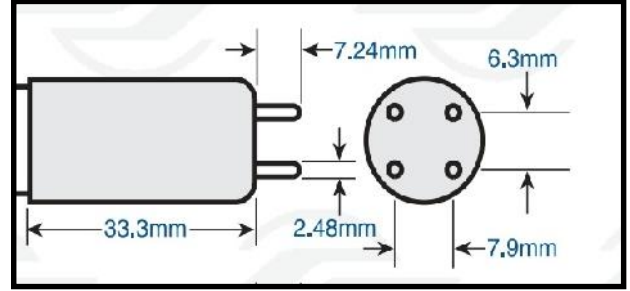
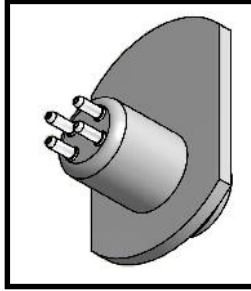
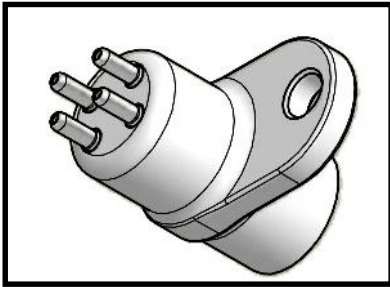


END# 1

END# 2

END# 3



LAMP PART#	USED ON MODEL(S)	LENGTH	SPLICED GLASS?	END#
1067R	1002KCS (2 PER UNIT)	18"	YES	3
1068R	1000KC; 1000KCS (SER# 10259 & LOWER USES TWO 1068R)	9"	YES	3
1068A-R	1000KCS (SER#10260 & HIGHER USES (1)1068R & (1)1068A-R	9"	NO	3
1068B-R aka 1062-1R	2181; 5009SL; 5009DL	9"	NO	1
1082R	9000 (16X25); 9016, 9016-2	14"	NO	3
1082LR	2414-MAG; 2414-FC; 2218	14"	NO	1
1082R-PCO	2414-S	14"	NO	2
1082 SIPT aka 102-944	2024; 2124; 2414-O3; 2414-O3-FC	14"	YES	1
1082X-R	1625K; 2025K; 9116; 9121; 9124	14"	NO	3
102-959	2414-PREMIUM (CHANGE EVERY 2 YEARS)	14"	NO	2
1083LR aka 1083LR-FC	2412-FC	12"	NO	1
1083LR-O3 aka 1083LR-O3-FC	2412-O3-FC	12"	YES	1
1076R	2000; 2018; 2000-230; 5018SL; 5018DL; 9000 (20X25); 9000-2; APRILAIRE 1910; APRILAIRE 1930	18"	NO	1
1076R-O3	2000-SOS; 2018-SOS	18"	YES	1
1076-1R SP	2000-23OOD; 3018; APRILAIRE 1952	18"	NO	2
1076-2R SP	6018	18"	NO	2
1097BR-SP	3024; APRILAIRE 1953	24"	NO	2
1081-1R SP	3032; APRILAIRE 1972	32"	NO	2
1081-2R	5036SL, 5036DL	36"	NO	3