



GelCopper Linesets • GelCopper Single Rolls • TwinGel
FullMetalGel • FullMetalPatch • GelPatch • GelSpools



TRY IT, LOVE IT
MADE IN USA

Call Us Today: 803.909.8100

Online: www.pdmus.com • Email: info@pdmus.com



GelCopper Products

PDM US - "First In Pipes"

PDM US, counts on over 40 years experience in Europe in copper tubes manufacturing. In April 2013, we decided to relocate our World Headquarters and main production plant in Rock Hill, South Carolina, USA. Since then, we pride ourselves on innovating, manufacturing and delivering the best preinsulated copper pipes in the US industry.

Why Choose Us?



INNOVATIVE THINKING

Our solutions continuously improve the HVAC piping industries with simple, durable and cost effective solutions. Our R&D keeps brain storming, testing and creating new products making sure we always keep leading and NEVER FOLLOW.



SERVICE

We pride ourselves on our service by keeping our customers the number one priority. Choosing PDM US means also creating a delightful supplier-customer experience.



QUALITY

Our proprietary product is crafted to perfection, it is 25/50 tested multiple times and ASTM B280 certified. It's proven itself to work, to last and to satisfy your needs. Contact us and we'll show you how it's done.



AVAILABILITY

Our plant is always in production – 24hrs a day, 7 days a week, 365 days a year. We never stop, constantly timing in advance the right production cycles, making sure to always have enough products to quickly and efficiently fulfill your orders.

GELCOPPER US: TRY IT, LOVE IT



PDM US:

The 10 Competitive Advantages

- 1. DURABILITY.** Our polyethylene internal foam and protective outer jacket make our solution extremely tough and very difficult to tear or break apart. Our insulation is the most resistant and long lasting in the market. Other competitors' insulation breaks by simply tearing it by hands or falls apart over time.
- 2. 100% MADE IN USA.** Most of the products from our competitors are made in Asia or Europe. Ours instead, In compliancy with the Buy American Act, are 100% made in the USA using exclusively American ingredients and therefore guaranteeing a high quality product, consistent availability and efficient logistic. We strongly support the buy American act.
- 3. ASTM-B280 / 700 PSI R410 COPPER.** We only use high quality ASTM-B280 / 700 PSI R410 copper exclusively from top US mills.
- 4. UNIQUE INSULATING PROCESS.** Several competitors of ours simply insert the copper tube into the insulation leaving a wide gap that could lead to condensation. Our pre-insulation process instead is performed by MACHINERY driven technology where the polyethylene foam is built on the copper tube and then coated by an additional protective outer jacket. This process ensures the insulation to be extremely tight around the copper tube preventing any risk of condensation.
- 5. SUPERLATIVE R-VALUES.** Our insulation has higher R-values when compared to similar thickness of traditional black rubber or to the ones of most of OUR competitors.
- 6. UL 25/50 PLENUM RATED.** Our products are positively tested against fire and smoke by Underwriter Laboratories. They are all Plenum Rated.
- 7. ANTI UV.** Our solutions are all 100% Anti UV and successfully tested against any related degradation, discoloration or deterioration for a minimum of 3 years. Black rubber breaks and falls apart over time.
- 8. FOOT MARKING.** The last phase of our insulating process ends by foot marking each of our rolls so contractors can count accurate initial unit charge, reduce copper waste and perform a professional installation. Traditional black rubber does not have this feature.
- 9. PAINTABLE.** The standard color of our product is a beautiful shiny white but eventually it can be painted to match the surrounding.
- 10. LEADERSHIP OF PDM US.** We are the true innovators of copper pipes insulation in the United States. We continuously evolve and set the trend for quality in our industry. We lead this market by improving our current products and constantly launching new solutions. Today we are one of the fastest growing companies in the HVAC industry and in the United States economy.



A New Solution for a Stronger Copper Tube Protection

PDM latest creation, **Infinitek**, provides peace of mind when installing copper tubes in harsh environments such as areas with high ocean salinity or highly regulated facilities such as in the food industry or government projects where highest safety standard are often demanded.

PDM Infinitek consists in a proprietary layer built on top of the copper tube and able to protect it virtually from any external agent, making the most durable coil available in the industry.

All **PDM** copper products may now be ordered with this optional feature.

Please inquire for pricing and availability.



**“A proprietary, strong
coating on the copper
tubing protecting it
from virtually any
external agent.
This is the most
durable coil available
in the industry.”**



100% MADE IN THE USA

GelCopper Line Sets™

APPLICATIONS

It provides the perfect size combination for both suction and liquid lines to fit every air conditioning, such as ductless mini-splits, VRF, heat pumps and unitary systems.

TECHNICAL SPECS

INSULATION

Polyethylene closed cell foam: assures thermal insulation from surroundings

ASTM C 1427-07 compliant

Type I (tubular)

Grade I (insulation material for use on typical commercial system non-crosslinked)

Low-density polyethylene foam: closed cells foam, CFC and HCFC gas free

Water vapor permeability: ASTM E96-00 compliant

Working temperature: ASTM C 1427-07 compliant

Wall thickness: 1/2"

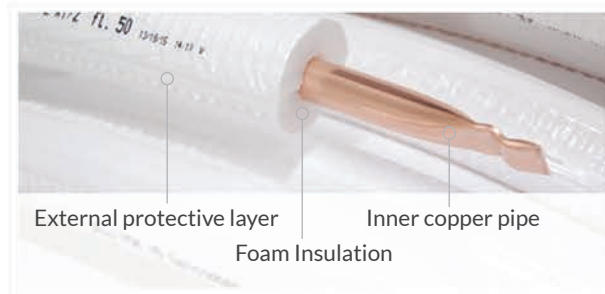
Surface burning characteristics: UL 94, top rated - UL 723, ASTM E84 (25/50) compliant, flame and Spread Index less than 25 and Smoke Development Index less than 50 as tested according to UL 723

R-Value: 4.0

COPPER

Pipes: Manufactured according to ASTM B280

Copper: No. C122200 DHP (phosphorous deoxidized, high residual phosphorous), 99.90%



SPECIAL FEATURES

Outer Jacket: additional white polyethylene jacket cover protects foam insulation from tearing during installation process

Foot Marking: insulation incrementally marked by every foot to ensure accurate initial unit charge and reduce copper waste.

R410: Gelcopper can be used in applications where high-pressure gases are used as refrigeration source

Anti UV: This product is 100% Anti UV and successfully tested against any related degradation, discoloration or deterioration for a minimum of 3 years

Paintable: the insulation can be painted to match the surroundings

Infinitek-ready: product can be ordered with Infinitek technology for the ultimate in copper durability. Please refer to pages 3-4 for additional information about Infinitek.

PDM US recommends using a high quality exterior paint for added protection when installed in exposed exterior areas. Installation under plastic duct is recommended to protect from severe weather conditions, accidental damages, or theft.



100% MADE IN THE USA

GelCopper Line Sets™

TRY IT, LOVE IT.

PRODUCT TABLE

PDM US PART NUMBER (both lines insulated)	LL	SL	INSULATION	LINE SETS (per pallet)	LENGTH (of coils)
F100.LSIN143812050	1/4	3/8	1/2	12	50 FT
F100.LSIN141212050	1/4	1/2	1/2	10	50 FT
F100.LSIN145812050	1/4	5/8	1/2	8	50 FT
F100.LSIN381212050	3/8	1/2	1/2	10	50 FT
F100.LSIN385812050	3/8	5/8	1/2	8	50 FT
F100.LSIN383412050	3/8	3/4	1/2	8	50 FT
F100.LSIN387812050	3/8	7/8	1/2	6	50 FT

PDM US PART NUMBER (only SL insulated)	LL	SL	INSULATION	LINE SETS (per pallet)	LENGTH (of coils)
F100.LS385812050	3/8	5/8	1/2	10	50 FT
F100.LS383412050	3/8	3/4	1/2	10	50 FT
F100.LS387812050	3/8	7/8	1/2	8	50 FT



100% MADE IN THE USA

GelCopper™ PREINSULATED COPPER ROLL

APPLICATIONS

Individual preinsulated rolls that perfectly fits every air conditioning, such as ductless mini-splits, VRF, heat pumps and unitary systems. Available in 50 ft and 164 ft with 1/2", 3/4" or 1" insulation thickness. All rolls are marked by the foot for proper line charging and maximum waste reduction.

TECHNICAL SPECS

INSULATION

Polyethylene closed cell foam: assures thermal insulation from surroundings

ASTM C 1427-07 compliant

Type I (tubular)

Grade I (insulation material for use on typical commercial system non-crosslinked)

Low-density polyethylene foam: closed cells foam, CFC and HCFC gas free

Water vapor permeability: ASTM E96-00 compliant

Working temperature: ASTM C 1427-07 compliant

Wall thickness: 1/2", 3/4" and 1"

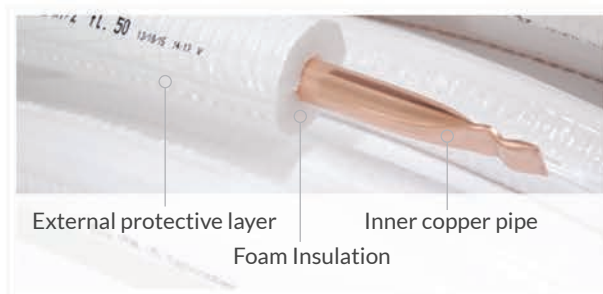
Surface burning characteristics: UL 94, top rated - UL 723, ASTM E84 (25/50) compliant, flame and Spread Index less than 25 and Smoke Development Index less than 50 as tested according to UL 723

R-Value: between 9.0 and 4.0 (depending on pipe diameter and insulation thickness)

COPPER

Pipes: Manufactured according to ASTM B280

Copper: No. C122200 DHP (phosphorous deoxidized, high residual phosphorous), 99.90%



SPECIAL FEATURES

Outer Jacket: additional white polyethylene jacket cover protects foam insulation from tearing during installation process

Foot Marking: insulation incrementally marked by every foot to ensure accurate initial unit charge and reduce copper waste.

R410: Gelcopper can be used in applications where high-pressure gases are used as refrigeration source

Anti UV: This product is 100% Anti UV and successfully tested against any related degradation, discoloration or deterioration for a minimum of 3 years

Paintable: the insulation can be painted to match the surroundings

Infinitek-ready: product can be ordered with Infinitek technology for the ultimate in copper durability. Please refer to pages 3-4 for additional information about Infinitek.

PDM US recommends using a high quality exterior paint for added protection when installed in exposed exterior areas. Installation under plastic duct is recommended to protect from severe weather conditions, accidental damages, or theft.



100% MADE IN THE USA

GelCopper™ PREINSULATED COPPER ROLL

TRY IT, LOVE IT.

PRODUCT TABLE

PDM US PART NUMBER	COIL SIZE	INSULATION	COILS (per pallet)	LENGTH (of coils)
F100.GUS145012	1/4	1/2	26	50 FT
F100.GUS385012	3/8	1/2	22	50 FT
F100.GUS125012	1/2	1/2	20	50 FT
F100.GUS585012	5/8	1/2	14	50 FT
F100.GUS345012	3/4	1/2	14	50 FT
F100.GUS785012	7/8	1/2	14	50 FT
F100.GUS1185012	1-1/8	1/2	6	50 FT
F100.GUS1416412	1/4	1/2	10	164 FT
F100.GUS3816412	3/8	1/2	8	164 FT
F100.GUS1216412	1/2	1/2	8	164 FT
F100.GUS5816412	5/8	1/2	6	164 FT
F100.GUS348212	3/4	1/2	10	82 FT
F100.GUS788212	7/8	1/2	10	82 FT
F100.GUS145034	1/4	3/4	14	50 FT
F100.GUS385034	3/8	3/4	14	50 FT
F100.GUS125034	1/2	3/4	12	50 FT
F100.GUS585034	5/8	3/4	12	50 FT
F100.GUS345034	3/4	3/4	10	50 FT
F100.GUS785034	7/8	3/4	10	50 FT
F100.GUS1450100	1/4	1	12	50 FT
F100.GUS3850100	3/8	1	10	50 FT
F100.GUS1250100	1/2	1	10	50 FT
F100.GUS5850100	5/8	1	10	50 FT
F100.GUS3450100	3/4	1	8	50 FT
F100.GUS7850100	7/8	1	8	50 FT



100% MADE IN THE USA

TwinGel PREINSULATED COPPER LINE SETS

APPLICATIONS

Lines are machinery attached one to the other for faster and easier install.

It provides the perfect size combination for both suction and liquid lines to fit every air conditioning, such as ductless mini-splits, VRF, heat pumps and unitary systems.

TECHNICAL SPECS

INSULATION

Polyethylene closed cell foam: assures thermal insulation from surroundings

ASTM C 1427-07 compliant

Type I (tubular)

Grade I (insulation material for use on typical commercial system non-crosslinked)

Low-density polyethylene foam: closed cells foam, CFC and HCFC gas free

Water vapor permeability: ASTM E96-00 compliant

Working temperature: ASTM C 1427-07 compliant

Wall thickness: 1/2"

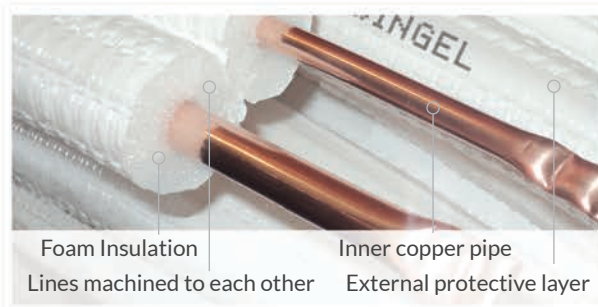
Surface burning characteristics: UL 94, top rated – UL 723, ASTM E84 (25/50) compliant, flame and Spread Index less than 25 and Smoke Development Index less than 50 as tested according to UL 723

R-Value: 4.0

COPPER

Pipes: Manufactured according to ASTM B280

Copper: No. C122200 DHP (phosphorous deoxidized, high residual phosphorous), 99.90%



SPECIAL FEATURES

Outer Jacket: additional white polyethylene jacket cover protects foam insulation from tearing during installation process

Foot Marking: insulation incrementally marked by every foot to ensure accurate initial unit charge and reduce copper waste.

R410: TwinGel can be used in applications where high-pressure gases are used as refrigeration source

Anti UV: This product is 100% Anti UV and successfully tested against any related degradation, discoloration or deterioration for a minimum of 3 years

Paintable: the insulation can be painted to match the surroundings

Infinitek-ready: product can be ordered with Infinitek technology for the ultimate in copper durability. Please refer to pages 3-4 for additional information about Infinitek.

PDM US recommends using a high quality exterior paint for added protection when installed in exposed exterior areas. Installation under plastic duct is recommended to protect from severe weather conditions, accidental damages, or theft.



100% MADE IN THE USA

TwinGel PREINSULATED COPPER LINE SETS

TRY IT, LOVE IT.

PRODUCT TABLE

PDM US PART NUMBER (both lines insulated)	LL	SL	INSULATION	LINE SETS (per pallet)	LENGTH (of coils)
TG.LSIN143812050	1/4	3/8	1/2	12	50 FT
TG.LSIN141212050	1/4	1/2	1/2	12	50 FT
TG.LSIN145812050	1/4	5/8	1/2	8	50 FT
TG.LSIN381212050	3/8	1/2	1/2	10	50 FT
TG.LSIN385812050	3/8	5/8	1/2	8	50 FT
TG.LSIN383412050	3/8	3/4	1/2	8	50 FT
TG.LSIN387812050	3/8	7/8	1/2	6	50 FT



100% MADE IN THE USA

FullMetalGel

PREINSULATED COPPER ROLL WITH ALUMINUM PROTECTIVE LAYER

APPLICATIONS

An aluminum layer placed on top of polyethylene insulation foam and protective skin makes product extremely durable and resistant. It's higher UV resistance makes it ideal for outdoor installations or even underground. It perfectly fits every air conditioning application such as ductless mini-splits, VRF, heat pumps and unitary systems.

TECHNICAL SPECS

INSULATION

Polyethylene closed cell foam: assures thermal insulation from surroundings

ASTM C 1427-07 compliant

Type I (tubular)

Grade I (insulation material for use on typical commercial system non-crosslinked)

Low-density polyethylene foam: closed cells foam, CFC and HCFC gas free

Water vapor permeability: ASTM E96-00 compliant

Working temperature: ASTM C 1427-07 compliant

Wall thickness: 1/2"

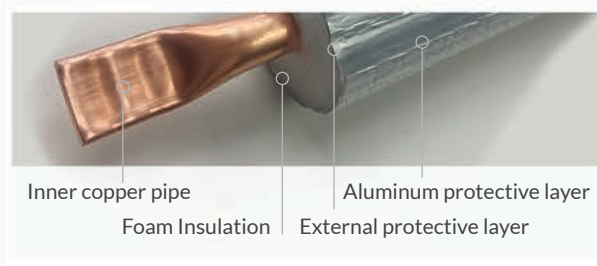
Surface burning characteristics: UL 94, top rated – UL 723, ASTM E84 (25/50) compliant, flame and Spread Index less than 25 and Smoke Development Index less than 50 as tested according to UL 723

R-Value: 4.0

COPPER

Pipes: Manufactured according to ASTM B280

Copper: No. C122200 DHP (phosphorous deoxidized, high residual phosphorous), 99.90%



SPECIAL FEATURES

Aluminum protective layer: aluminum layer provides extremely high durability and protection

Exterior Jacket: additional polyethylene outer jacket protects aluminum from getting damaged

Foot Marking: insulation incrementally marked by every foot to ensure accurate initial unit charge and reduce copper waste.

R410: FullMetalGel can be used in applications where high-pressure gases are used as refrigeration source

Anti UV: This product is 100% Anti UV and successfully tested against any related degradation, discoloration or deterioration for a minimum of 5 years

Paintable: the insulation can be painted to match the surroundings

Infinitek-ready: product can be ordered with Infinitek technology for the ultimate in copper durability. Please refer to pages 3-4 for additional information about Infinitek.

PDM US recommends using a high quality exterior paint for added protection when installed in exposed exterior areas. Installation under plastic duct is recommended to protect from severe weather conditions, accidental damages, or theft.



100% MADE IN THE USA

FullMetalGel

PREINSULATED COPPER ROLL WITH
ALUMINUM PROTECTIVE LAYER

TRY IT, LOVE IT.

PRODUCT TABLE

PDM US PART NUMBER	COIL SIZE	INSULATION	COILS (per pallet)	LENGTH (of coils)
FMG.GUS145012	1/4	1/2	26	50 FT
FMG.GUS385012	3/8	1/2	22	50 FT
FMG.GUS125012	1/2	1/2	20	50 FT
FMG.GUS585012	5/8	1/2	14	50 FT
FMG.GUS345012	3/4	1/2	14	50 FT
FMG.GUS785012	7/8	1/2	14	50 FT
FMG.GUS1416412	1/4	1/2	10	164 FT
FMG.GUS3816412	3/8	1/2	8	164 FT
FMG.GUS1216412	1/2	1/2	8	164 FT
FMG.GUS5816412	5/8	1/2	6	164 FT
FMG.GUS348212	3/4	1/2	10	82 FT
FMG.GUS788212	7/8	1/2	10	82 FT



100% MADE IN THE USA

FullMetalPatch

INSULATION BAR WITH ALUMINUM OUTER JACKET

APPLICATIONS

It perfectly completes any installation job where copper line sets are involved or replace old or damaged insulation. An aluminum layer placed on top of polyethylene insulation foam and protective skin makes product extremely durable and resistant. Works for every air conditioning application such as ductless mini-splits, VRF, heat pumps and unitary systems.

TECHNICAL SPECS

Polyethylene closed cell foam: assures thermal insulation from surroundings

ASTM C 1427-07 compliant

Type I (tubular)

Grade I (insulation material for use on typical commercial system non-crosslinked)

Low-density polyethylene foam: closed cells foam, CFC and HCFC gas free

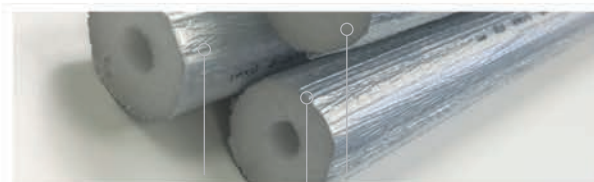
Water vapor permeability: ASTM E96-00 compliant

Working temperature: ASTM C 1427-07 compliant

Wall thickness: 1/2" and 3/4"

Surface burning characteristics: UL 94, top rated – UL 723, ASTM E84 (25/50) compliant, flame and Spread Index less than 25 and Smoke Development Index less than 50 as tested according to UL 723

R-Value: between 6.0 and 4.0 (depending on insulation diameter)



Aluminum protective layer Foam Insulation
External protective layer

SPECIAL FEATURES

Aluminum protective layer: aluminum layer provides extremely high durability and protection

Exterior Jacket: additional polyethylene outer jacket protects aluminum from getting damaged

R410: FullMetalPatch can be used in applications where high-pressure gases are used as refrigeration source

Anti UV: This product is 100% Anti UV and successfully tested against any related degradation, discoloration or deterioration for a minimum of 5 years

Paintable: the insulation can be painted to match the surroundings

Infinitek-ready: product can be ordered with Infinitek technology for the ultimate in copper durability. Please refer to pages 3-4 for additional information about Infinitek.

PDM US recommends using a high quality exterior paint for added protection when installed in exposed exterior areas. Installation under plastic duct is recommended to protect from severe weather conditions, accidental damages, or theft.



100% MADE IN THE USA

FullMetalPatch

INSULATION BAR WITH ALUMINUM OUTER JACKET

TRY IT, LOVE IT.

PRODUCT TABLE

PDM US PART NUMBER	DIAMETER	INSULATION	PIECES (per pallet)	LENGTH
F100.FMP140312	1/4	1/2	160	3FT
F100.FMP380312	3/8	1/2	128	3FT
F100.FMP120312	1/2	1/2	112	3FT
F100.FMP580312	5/8	1/2	80	3FT
F100.FMP340312	3/4	1/2	64	3FT
F100.FMP780312	7/8	1/2	48	3FT



100% MADE IN THE USA

GelPatch™

APPLICATIONS

It perfectly completes any installation job where copper line sets are involved. Works for every air conditioning application such as ductless mini-splits, VRF, heat pumps and unitary systems. The polyethylene closed cell foam assures thermal insulation from surroundings. Available in 3ft with 1/2" or 3/4" insulation thickness.

TECHNICAL SPECS

Polyethylene closed cell foam: assures thermal insulation from surroundings

ASTM C 1427-07 compliant

Type I (tubular)

Grade I (insulation material for use on typical commercial system non-crosslinked)

Low-density polyethylene foam: closed cells foam, CFC and HCFC gas free

Water vapor permeability: ASTM E96-00 compliant

Working temperature: ASTM C 1427-07 compliant

Wall thickness: 1/2" and 3/4"

Length: Available in 3ft and 6ft

Surface burning characteristics: UL 94, top rated - UL 723, ASTM E84 (25/50) compliant, flame and Spread Index less than 25 and Smoke Development Index less than 50 as tested according to UL 723

R-Value: between 6.0 and 4.0 (depending on insulation diameter)



SPECIAL FEATURES

Outer Jacket: additional polyethylene jacket cover protects foam insulation from tearing during installation process

R410: GelPatch can be used in applications where high-pressure gases are used as a refrigeration source

Anti UV: This product is 100% Anti UV and successfully tested against any related degradation, discoloration or deterioration for a minimum of 3 years

Paintable: the insulation can be painted to match the surroundings

PDM US recommends using a high quality exterior paint for added protection when installed in exposed exterior areas. Installation under plastic duct is recommended to protect from severe weather conditions, accidental damages, or theft.



100% MADE IN THE USA

GelPatch™

TRY IT, LOVE IT.

PRODUCT TABLE

PDM US PART NUMBER	DIAMETER	INSULATION	PIECES (per pallet)	LENGTH
F100.GP140312	1/4	1/2	160	3 FT
F100.GP380312	3/8	1/2	128	3 FT
F100.GP120312	1/2	1/2	112	3 FT
F100.GP580312	5/8	1/2	80	3 FT
F100.GP340312	3/4	1/2	64	3 FT
F100.GP780312	7/8	1/2	48	3 FT
F100.GP140334	1/4	3/4	96	3 FT
F100.GP380334	3/8	3/4	80	3 FT
F100.GP120334	1/2	3/4	64	3 FT
F100.GP580334	5/8	3/4	48	3 FT
F100.GP340334	3/4	3/4	48	3 FT
F100.GP780334	7/8	3/4	48	3 FT



100% MADE IN THE USA

GelSpools

APPLICATIONS

Extra Long spools of PDM premium insulation. Ideal for new installations or to simply replace old or damaged insulation without having to change the copper coils. Good for Indoor or Outdoor. Available in different sizes and with 1/2" or 3/4" insulation thickness.

TECHNICAL SPECS

Polyethylene closed cell foam: assures thermal insulation from surroundings.

ASTM C 1427-07 compliant

Type I (tubular)

Grade I (insulation material for use on typical commercial system non-crosslinked)

Low-density polyethylene foam: closed cells foam, CFC and HCFC gas free

Water vapor permeability: ASTM E96-00 compliant

Working temperature: ASTM C 1427-07 compliant

Wall thickness: 1/2" and 3/4"

Surface burning characteristics: UL 94, top rated - UL 723, ASTM E84 (25/50) compliant, flame and Spread Index less than 25 and Smoke Development Index less than 50 as tested according to UL 723

R-Value: between 6.0 and 4.0 (depending on insulation diameter)



SPECIAL FEATURES

Outer Jacket: additional polyethylene jacket cover protects foam insulation from tearing during installation process

R410: GelSpool can be used in applications where high-pressure gases are used as a refrigeration source

Anti UV: This product is 100% Anti UV and successfully tested against any related degradation, discoloration or deterioration for a minimum of 3 years

Paintable: the insulation can be painted to match the surroundings

PDM US recommends using a high quality exterior paint for added protection when installed in exposed exterior areas. Installation under plastic duct is recommended to protect from severe weather conditions, accidental damages, or theft.



100% MADE IN THE USA

GelSpools

TRY IT, LOVE IT.

PRODUCT TABLE

PDM US PART NUMBER	SIZE	INSULATION	SPOOL LENGTH (FT)	SPOOLS (per pallet)
GP-GUS-SP1412	1/4	1/2	3444	2
GP-GUS-SP3812	3/8	1/2	2624	2
GP-GUS-SP1212	1/2	1/2	2296	2
GP-GUS-SP5812	5/8	1/2	1804	2
GP-GUS-SP3412	3/4	1/2	1443	2
GP-GUS-SP7812	7/8	1/2	1443	2
GP-GUS-SP1434	1/4	3/4	1968	2
GP-GUS-SP3834	3/8	3/4	1640	2
GP-GUS-SP1234	1/2	3/4	1214	2
GP-GUS-SP5834	5/8	3/4	984	2
GP-GUS-SP3434	3/4	3/4	853	2
GP-GUS-SP7834	7/8	3/4	754	2

TRY IT, LOVE IT



MADE IN USA



Ph: 803.909.8100 | Fx: 803.909.8725 | E: info@pdmus.com | www.pdmus.com