

Our custom, poly-injection formed, ebb & flow fittings are designed to be used with feed and drain watering systems.

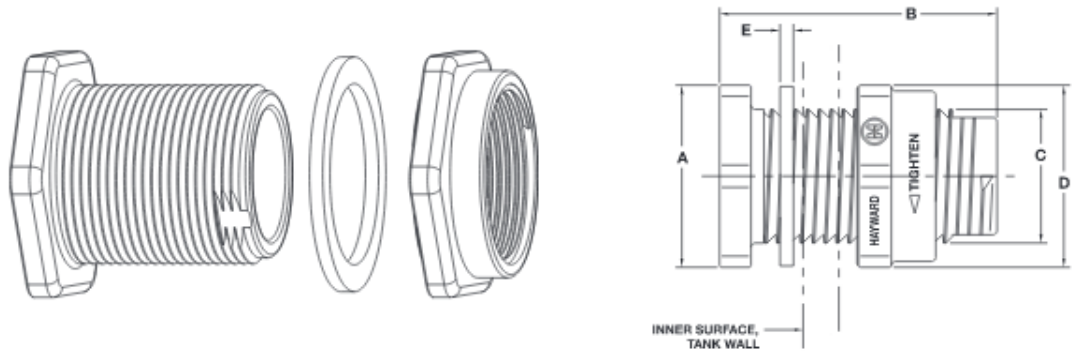
Outlets are available in 1/2" (13 mm), 3/4" (19 mm) and 1" (25 mm) openings. Optional multi-level, overflow extensions and debris screens are available and easily installed into our outlets.

- Interior threads accept 3/4" standard pipe thread.
- Use as ebb and flow fittings & bulkhead fittings.
- Increased versatility: thread pvc pipe fittings into bulkhead fittings- ideal for use in aeroponic and drip applications.
- Superior quality & competitively priced.

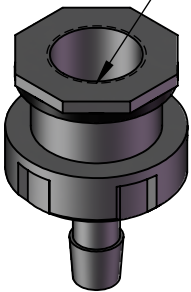
Available Sizes:

- 1/2" (13 mm)
- 3/4" (19 mm)
- 1" (25 mm)

To Install, use 1 3/8 drill bit.



1/2-14 NPSM Straight Pipe Tapped Thread




specification source:
<http://www.botanicare.com/Fittings-P78C8.aspx>

PROPRIETARY AND CONFIDENTIAL
THE INFORMATION CONTAINED IN THIS
DRAWING IS THE SOLE PROPERTY OF
NU-AIR VENTILATION SYSTEMS INCORPORATED.
ANY REPRODUCTION IN PART OR AS A WHOLE
WITHOUT THE WRITTEN PERMISSION OF
NU-AIR VENTILATION SYSTEMS INCORPORATED
IS PROHIBITED.

UNLESS OTHERWISE SPECIFIED:
DIMENSIONS ARE IN INCHES
TOLERANCES:
ANGULAR: BEND ±1°
TWO PLACE DECIMAL ±0.01
THREE PLACE DECIMAL ±0.001

MATERIAL
PROJECT:
DO NOT SCALE DRAWING

	NAME	DATE
DRAWN	---	25/02/2013
MODEL INFORMATION: Model Name: 50362 Revision Level:		

 Sustainability Through Innovation		
TITLE: Drain Fitting - 1/2" with washer and nut		
SIZE A	DWG. NO. 50362	REV ---
SCALE: 1:2	WEIGHT:	SHEET 2 OF 2