

ADVANCED WIND BAFFLE WB-SD / WB-RE

DESIGNED FOR P-SERIES PUY-7 OUTDOOR UNITS ONLY

Job Name:	Date:
System Reference:	



GENERAL FEATURES

- Allows P-Series outdoor units to operate to -20° F DB cooling.
- Prevents wind from reversing outdoor fan rotation.
- Durable, low maintenance construction.

PLEASE NOTE

- Installation location will dictate Advanced wind baffle requirements. Refer to the installation manual for additional details.
- Advanced Wind Baffles should be installed to prevent any wind blowing directly into the unit.
- **Front Wind Baffle (WB-PA3, WB-PA4, WB-PA5) is also required for -20° F operation.**

MODEL REQUIRED PER OUTDOOR UNIT

UNIT MODEL	Type and Quantity					
	WB-SD4	WB-RE4	WB-SD5	WB-RE5	WB-SD6	WB-RE6
PUY-A12NKA7	1	1				
PUY-A18NKA7	1	1				
PUY-A24NHA7			1	1		
PUY-A30NHA7			1	1		
PUY-A36NKA7					1	1
PUY-A42NKA7					1	1

SPECIFICATIONS

		WB-SD4	WB-RE4
Exterior	Color	Matches P-Series Outdoor Unit	
	Surface Treatment	Polyester Powder Coating	
	Material	Alloy Hot-Dip Zinc Coated Carbon Steel Sheet	
Weight (Lbs)		6	11

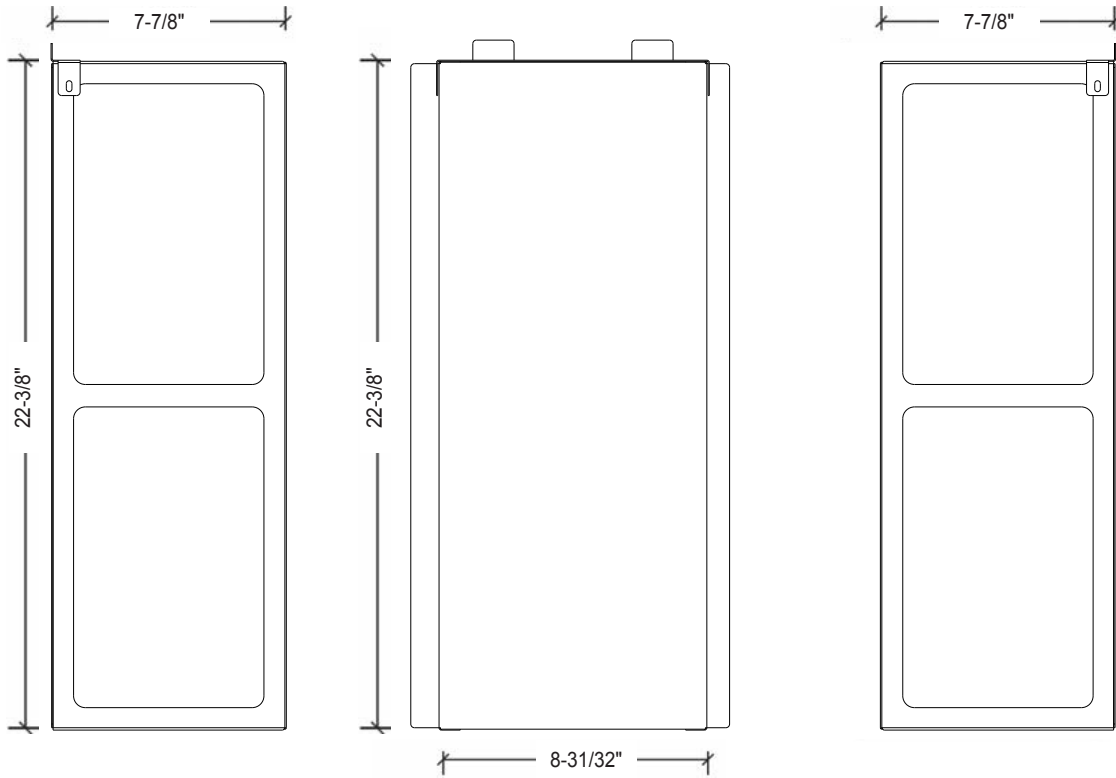
		WB-SD5	WB-RE5
Exterior	Color	Matches P-Series Outdoor Unit	
	Surface Treatment	Acrylic Resin Coating	
	Material	Alloy Hot-Dip Zinc Coated Carbon Steel Sheet	
Weight		10	18

		WB-SD6	WB-RE6
Exterior	Color	Matches P-Series Outdoor Unit	
	Surface Treatment	Acrylic Resin Coating	
	Material	Alloy Hot-Dip Zinc Coated Carbon Steel Sheet	
Weight		15	35

DIMENSIONS: WB-SD4 and WB-RE4

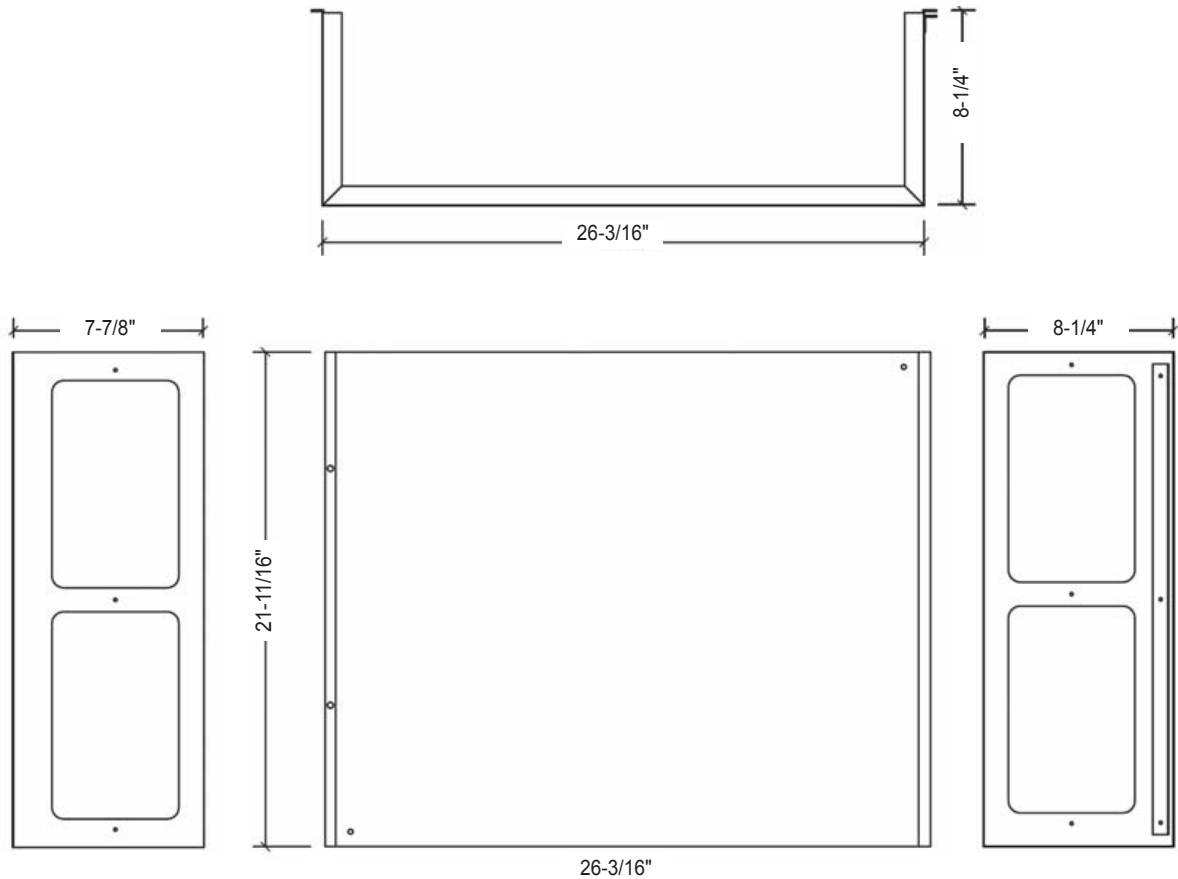
WB-SD4

Unit: inch



WB-RE4

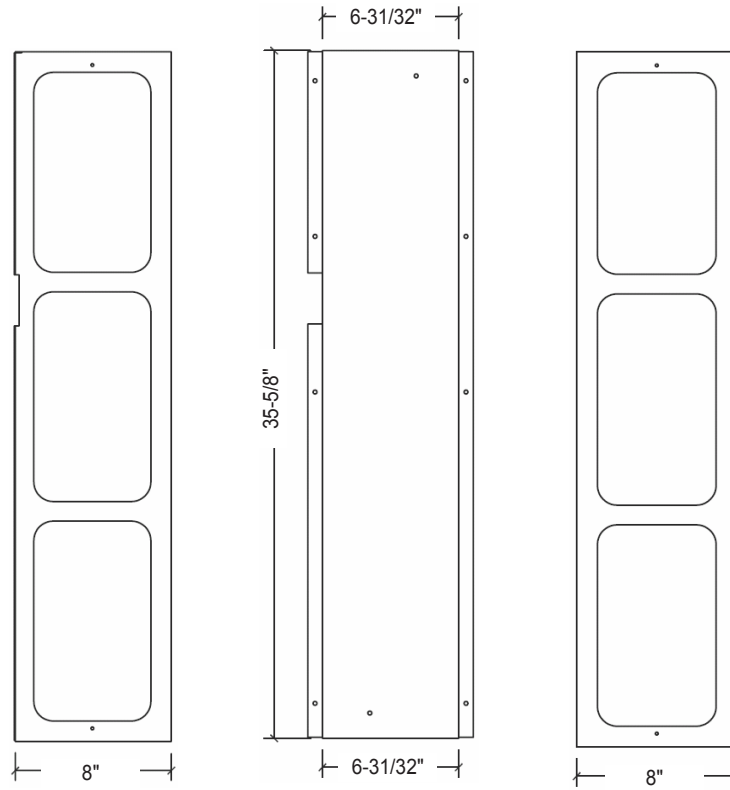
Unit: inch



DIMENSIONS: WB-SD5 and WB-RE5

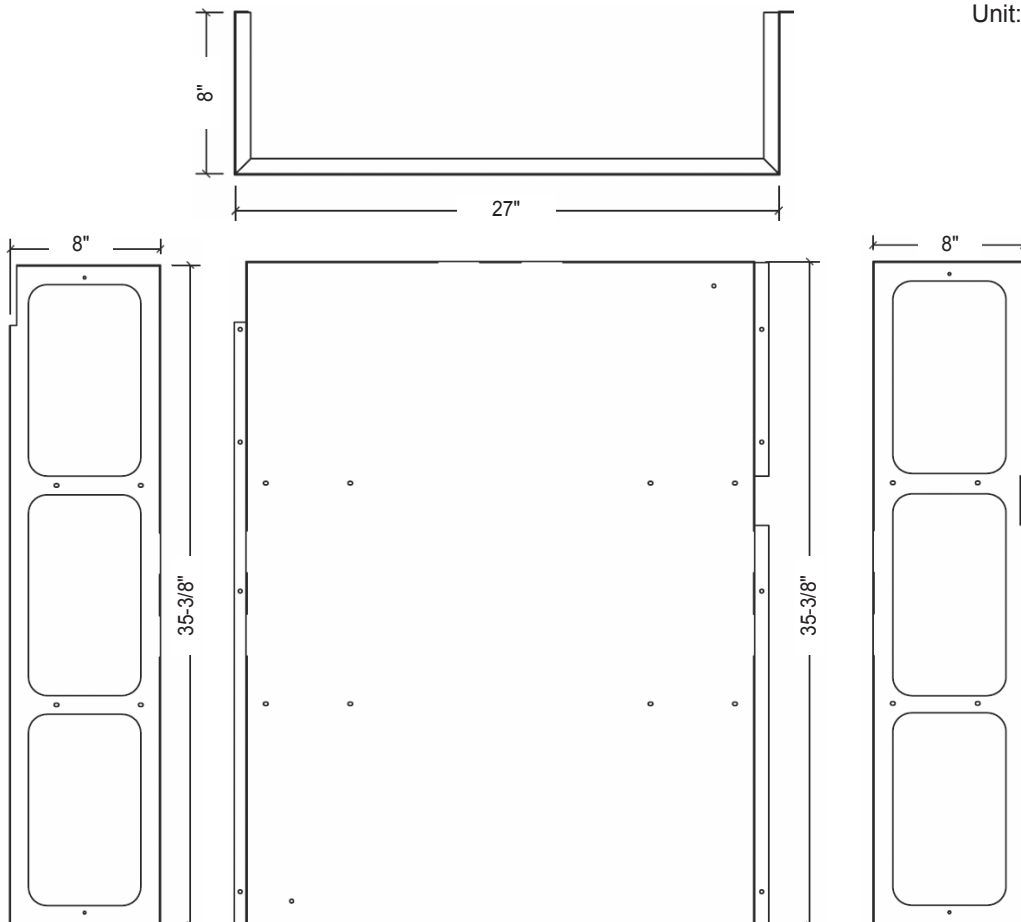
WB-SD5

Unit: inch



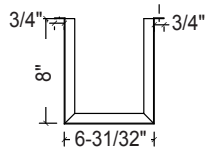
WB-RE5

Unit: inch

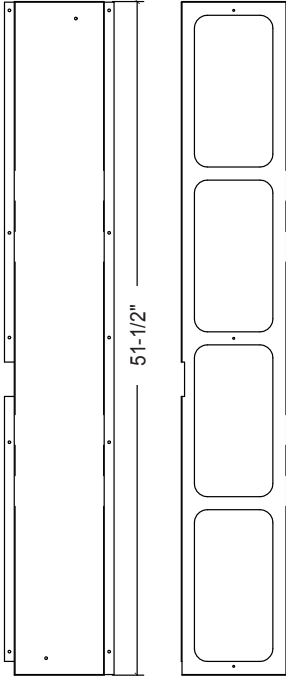


DIMENSIONS: WB-SD6 and WB-RE6

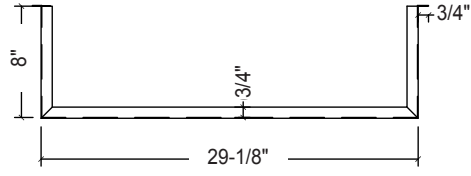
WB-SD6



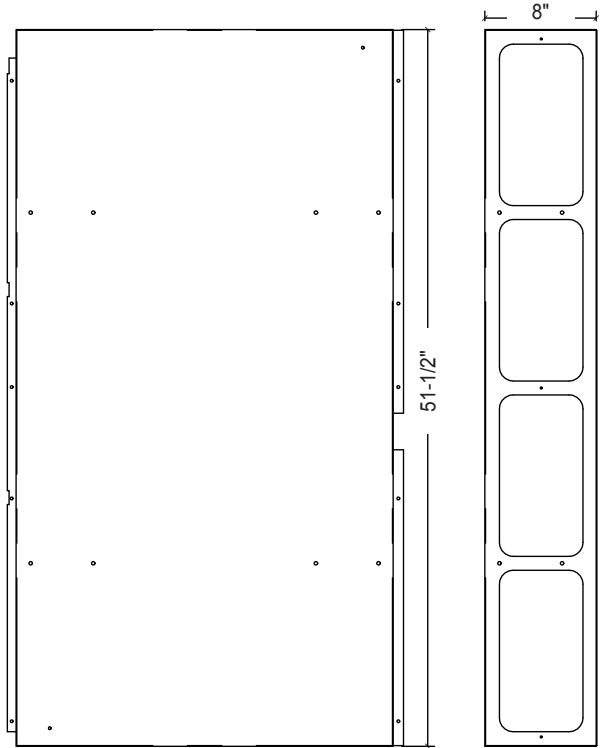
Unit: inch



WB-RE6



Unit: inch



Manufactured for MITSUBISHI ELECTRIC US, INC.

1340 Satellite Boulevard, Suwanee, GA 30024

Toll Free: 800-433-4822 www.mehvac.com