

SERVICE PARTS LIST FOR MITSUBISHI ELECTRIC PACKAGED AIR-CONDITIONERS

Series : PUHY-HP•TJMU-A(-BS)

For use with the R410A

June 2010

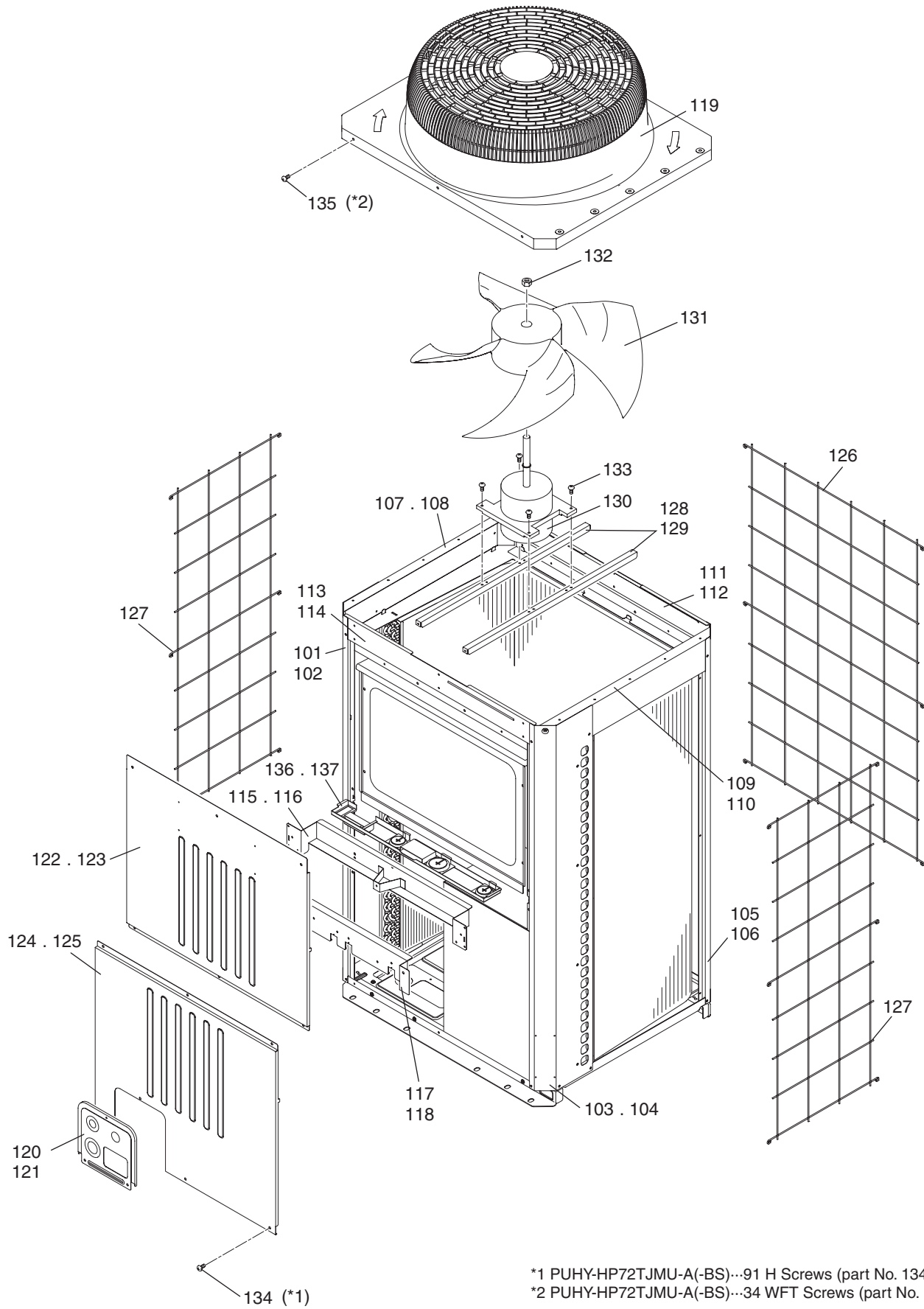
BWE10080

INDEX

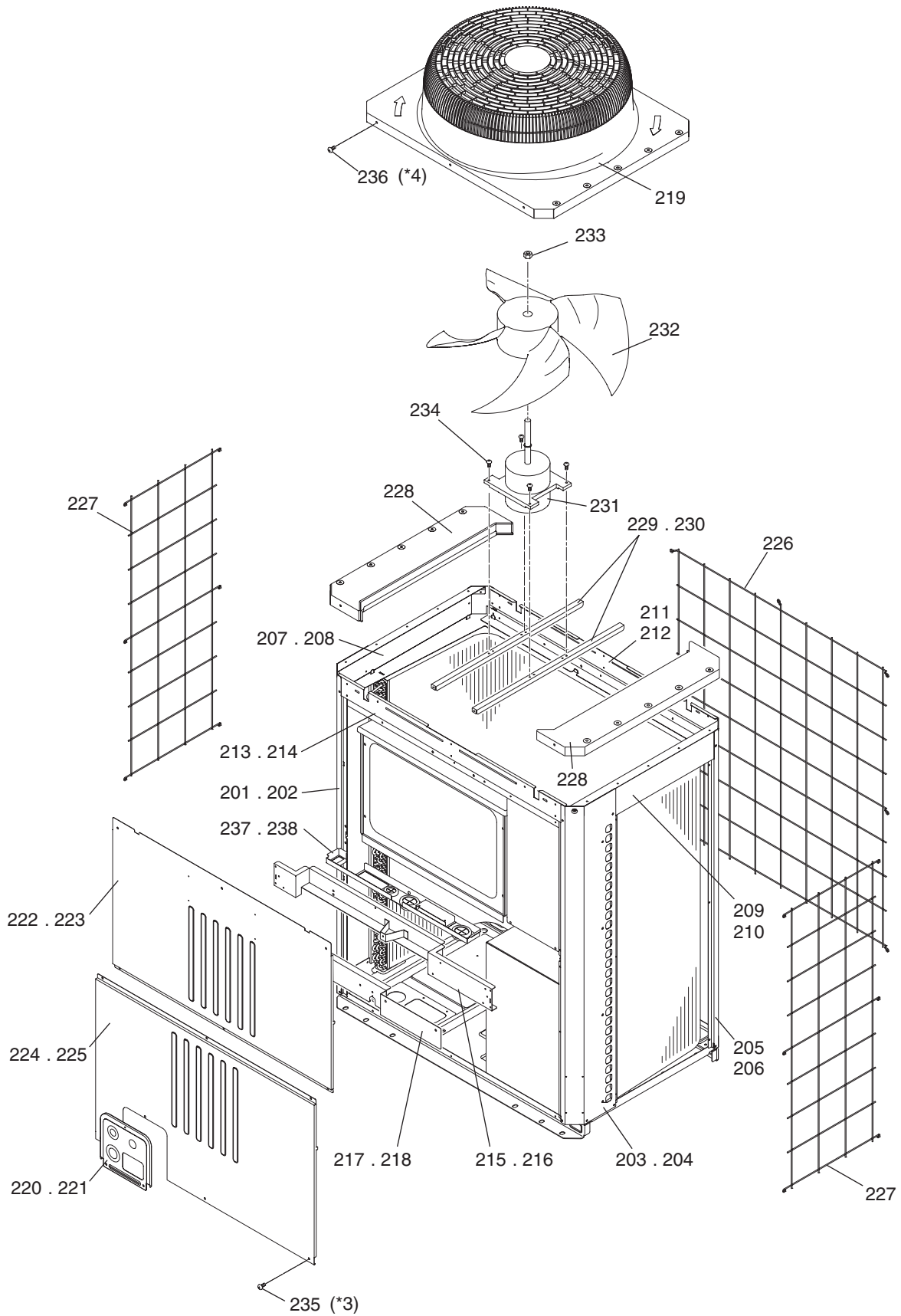
PUHY-HP72TJMU-A
PUHY-HP72TJMU-A-BS
PUHY-HP96TJMU-A
PUHY-HP96TJMU-A-BS

The Package name list

PUHY-HP144TSJMU-A(-BS) [PUHY-HP72TJMU-A(-BS) + PUHY-HP72TJMU-A(-BS)]
PUHY-HP192TSJMU-A(-BS) [PUHY-HP96TJMU-A(-BS) + PUHY-HP96TJMU-A(-BS)]

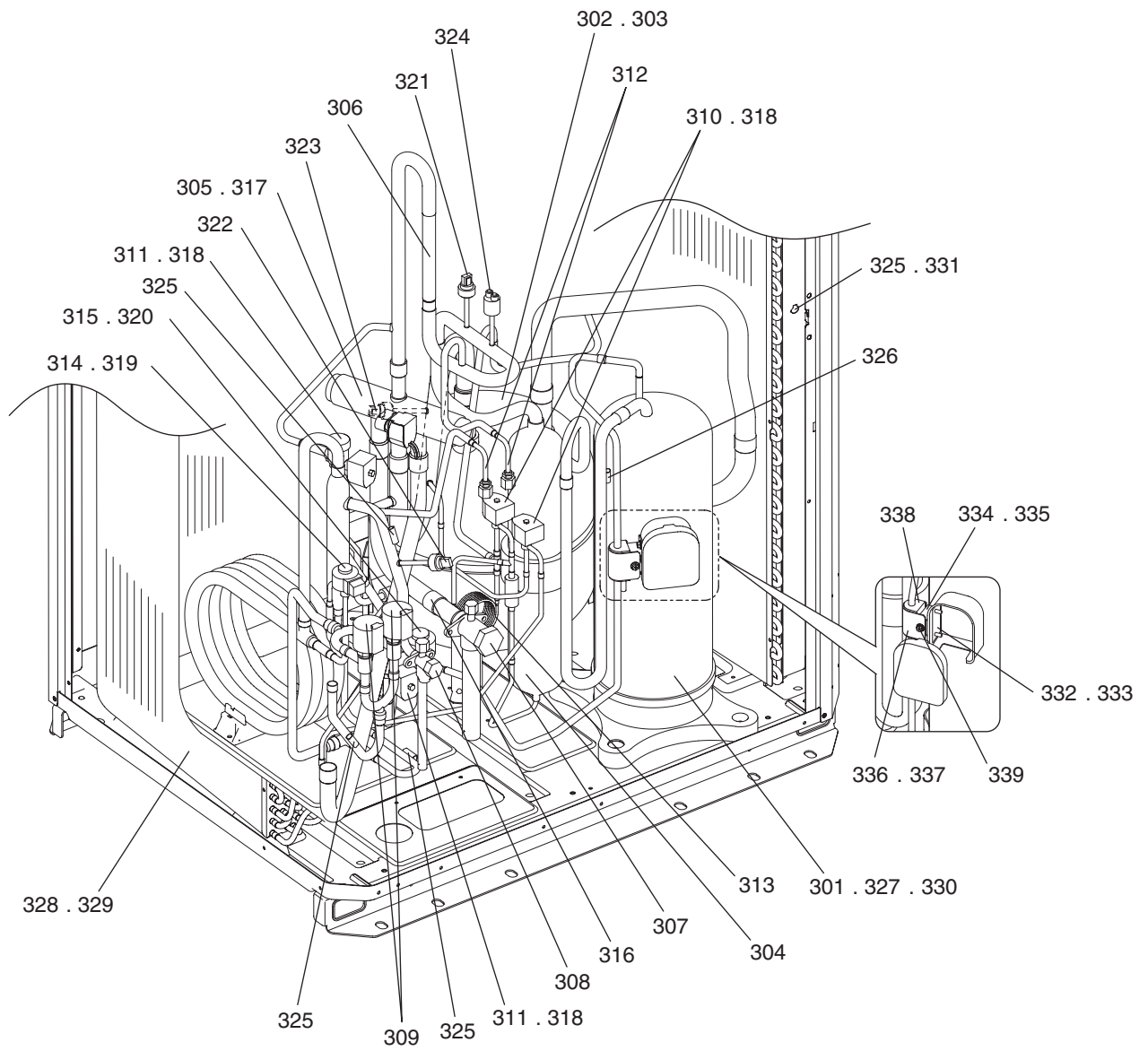


No.	Part No.	G : RoHS Apply Only W : RoHS Apply by Running Change		Spec.	PUHY-HP72TJMU-A	PUHY-HP72TJMU-A-BS				Dwg. No.	Notes for the models	Revision info.
			Part Name									
101	R11 019 626	G	Pillar LF		1					KB02A011G07		
102	R11 020 626	G	Pillar LF	BS	1					KB02A011G08		
103	R11 014 626	G	Pillar RF		1					KB02A012G07		
104	R11 015 626	G	Pillar RF	BS	1					KB02A012G08		
105	R63 002 627	G	Pillar B		2					KB02A013G07		
106	R63 003 627	G	Pillar B	BS	2					KB02A013G08		
107	R63 038 162	G	Frame assy L		1					KB00C163G09		
108	R63 040 162	G	Frame assy L	BS	1					KB00C163G10		
109	R63 039 162	G	Frame assy R		1					KB00C164G09		
110	R63 041 162	G	Frame assy R	BS	1					KB00C164G10		
111	R63 001 216	G	Frame assy B		1					KB00C162G07		
112	R63 002 216	G	Frame assy B	BS	1					KB00C162G08		
113	R63 004 668	G	Frame F		1					KB02J208H01		
114	R63 005 668	G	Frame FB	BS	1					KB02J208G02		
115	R63 013 111	G	Frame assy MU		1					KB00C887G01		
116	R63 014 162	G	Frame assy MU	BS	1					KB00C887G07		
117	R63 016 111	G	Frame assy MB		1					KB00L774G01		
118	R63 015 162	G	Frame assy MB	BS	1					KB00L774G07		
119	R63 4H6 118	G	Fan guard		1	1				KB25A008G02		
120	R61 090 690		Piping cover	THMU	1					KB02L911G05		
121	R61 091 690		Piping cover	THMU BS	1					KB02L911G06		
122	R61 050 651	G	Panel FU		1					KB02B379H01		
123	R63 4H8 651	G	Panel FU	BS	1					KB02B379G02		
124	R61 003 652	G	Panel FB	YHM-A	1					KB02B392H02		
125	R61 004 652	G	Panel FB	YHM-A BS	1					KB02B392G03		
126	R63 004 611	G	Fin guard B		1	1				KB07T208G01		
127	R61 007 611	G	Fin guard LR		2	2				KB07C043G03		
128	R63 4H6 140	G	Fan stand		2					KB02D050H01		
129	R63 4H7 140	G	Fan stand	BS	2					KB02D050G01		
130	R61 047 220	W	Motor	TC920IA-UL	1	1				P780112X01		
131	R63 4H6 300	G	Fan		1	1				KB25A009H02		
132	R63 4H6 122	G	Box nut	M12 CH	1	1				P552000X01		
133	R63 014 087	G	Upset screw	6×10	4	4				P516047X01		
134	R63 007 087	G	H Screw	5×10 KNURLED (30pcs)	4	4				KB00H418G14	*1	
135	R63 006 087	G	WFT Screw	5×12 (30pcs)	2	2				KB00H418G01	*2	
136	R61 021 260	G	Snow guard assy		1					KB00M950G06		
137	R61 T01 260	G	Snow guard assy	BS	1					KB00M950G09		

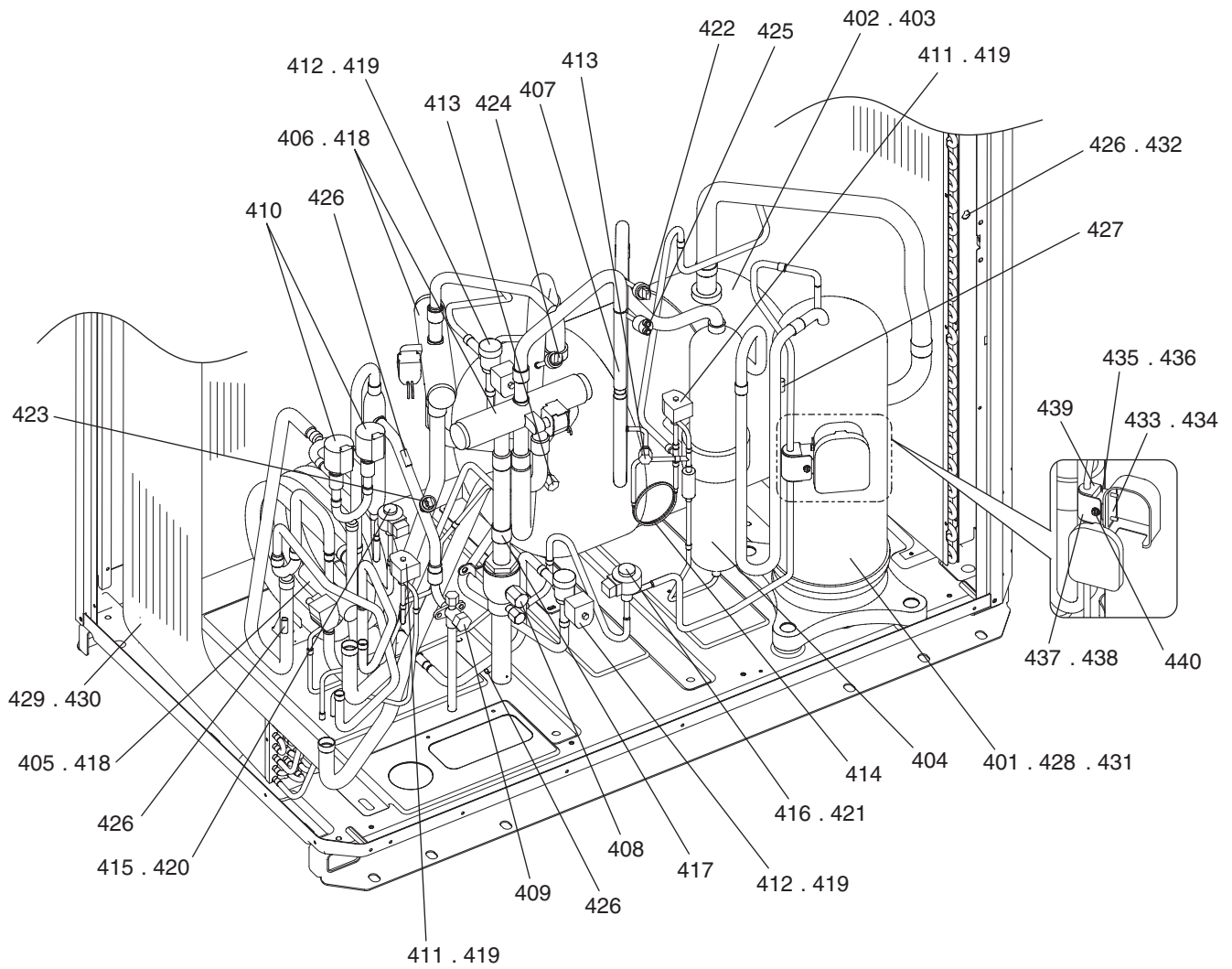


*3 PUHY-HP96TJMU-A(-BS)...97 H Screws (part No. 235).
 *4 PUHY-HP96TJMU-A(-BS)...42 WFT Screws (part No. 236).

No.	Part No.	G : RoHS Apply Only W : RoHS Apply by Running Change		Spec.	PUHY-HP96TJMU-A	PUHY-HP96TJMU-A-BS					Dwg. No.	Notes for the models	Revision info.
			Part Name										
201	R11 019 626	G	Pillar LF		1						KB02A011G07		
202	R11 020 626	G	Pillar LF	BS	1						KB02A011G08		
203	R11 014 626	G	Pillar RF		1						KB02A012G07		
204	R11 015 626	G	Pillar RF	BS	1						KB02A012G08		
205	R63 002 627	G	Pillar B		2						KB02A013G07		
206	R63 003 627	G	Pillar B	BS	2						KB02A013G08		
207	R63 038 162	G	Frame assy L		1						KB00C163G09		
208	R63 040 162	G	Frame assy L	BS	1						KB00C163G10		
209	R63 039 162	G	Frame assy R		1						KB00C164G09		
210	R63 041 162	G	Frame assy R	BS	1						KB00C164G10		
211	R63 019 111	G	Frame assy B	18HP	1						KB00C464G03		
212	R63 020 111	G	Frame assy B	18HP BS	1						KB00C464G04		
213	R63 021 111	G	Frame F	18HP	1						KB02B093H03		
214	R63 022 111	G	Frame FB	18HP BS	1						KB02B093G04		
215	R61 031 162	G	Frame assy MU	18HP	1						KB00T829G01		
216	R61 033 162	G	Frame assy MU	18HP BS	1						KB00T829G03		
217	R61 006 162	G	Frame assy MB	18HP	1						KB00L186G01		
218	R61 008 162	G	Frame assy MB	18HP BS	1						KB00L186G07		
219	R63 4H6 118	G	Fan guard		1	1					KB25A008G02		
220	R61 090 690		Piping cover	THMU	1						KB02L911G05		
221	R61 091 690		Piping cover	THMU BS	1						KB02L911G06		
222	R61 051 651	G	Panel FU	18HP	1						KB02B402H01		
223	R63 7H8 651	G	Panel FU	18HP BS	1						KB02B402G02		
224	R61 005 652	G	Panel FB	18HP YHM-A	1						KB02B403H02		
225	R61 006 652	G	Panel FB	18HP YHM-A BS	1						KB02B403G03		
226	R61 003 118	G	Fin guard B	18HP	1	1					KB07T209G01		
227	R61 007 611	G	Fin guard LR		2	2					KB07C043G03		
228	R63 7H6 118	G	Fan guard cover		2	2					KB25B086G01		
229	R63 4H6 140	G	Fan stand		2						KB02D050H01		
230	R63 4H7 140	G	Fan stand	BS	2						KB02D050G01		
231	R61 047 220	W	Motor	TC920IA-UL	1	1					P780112X01		
232	R63 4H6 300	G	Fan		1	1					KB25A009H02		
233	R63 4H6 122	G	Box nut	M12 CH	1	1					P552000X01		
234	R63 014 087	G	Upset screw	6×10	4	4					P516047X01		
235	R63 007 087	G	H Screw	5×10 KNURLED (30pcs)	4	4					KB00H418G14	*3	
236	R63 006 087	G	WFT Screw	5×12 (30pcs)	2	2					KB00H418G01	*4	
237	R61 001 261	G	Snow guard assy		1						KB00M950G11		
238	R63 T01 261	G	Snow guard assy	BS	1						KB00M950G10		



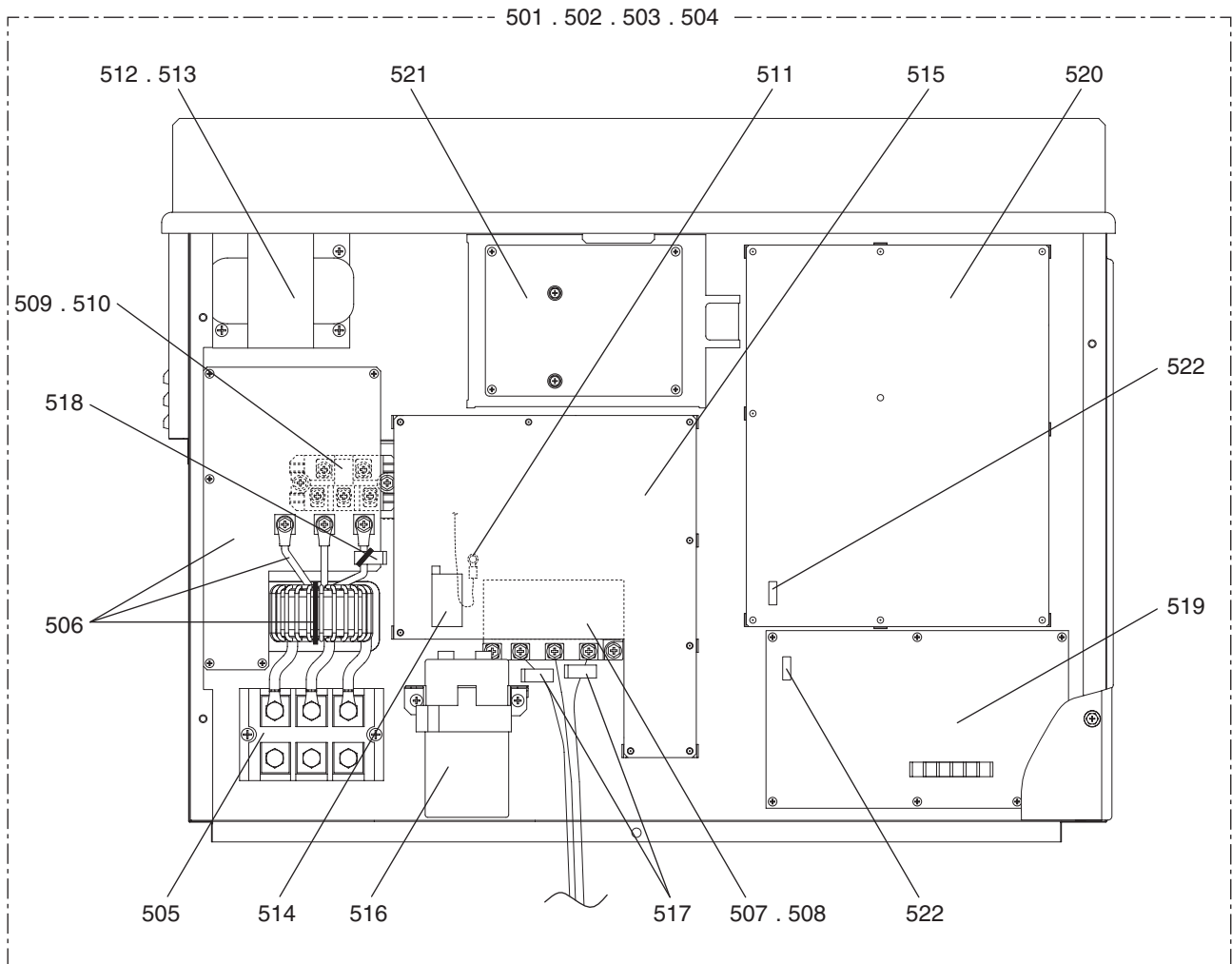
No.	Part No.	G : RoHS Apply Only W : RoHS Apply by Running Change		Spec.	PUHY-HP72TJMU-A	PUHY-HP72TJMU-A-BS				Dwg. No.	Notes for the models	Revision info.
		Part Name										
301	R69 077 478			Scroll compressor	HNK78FA1(S)	1	1			EP10113B05		
302	R61 067 484	G		Accumulator assy		1				KB00R036G13		
303	R61 068 484	G		Accumulator assy	BS		1			KB00R036G14		
304	R61 016 487	G		Oil separator assy		1	1			KB00G667G02		
305	R63 Y05 154	G		Four way valve	STF-07	1	1			P633119X01	<21S4a>	
306	R63 R43 418	G		Check valve	BCV-1005	1	1			P639165X01	<CV1>	
307	R61 002 540	G		Valve	VSAMH8SSCM-A	1	1			P636343X01	<BV1>	
308	R61 004 540	G		Valve	VSAMH4SSCM-LA1	1	1			P636345X01	<BV2>	
309	R61 015 401	G		Linear expansion valve	EFM-A 1700XA	2	2			P632461X01	<LEV2a,LEV2b>	
310	R63 P90 232	G		Solenoid valve	VPV-152D	2	2			P631277X01	<SV1a,SV9>	
311	R63 851 921	G		Solenoid valve	VPV	2	2			P631822X01	<SV2,SV6>	
312	R63 R34 413	G		Check joint L	R410A	2	2			P666004X02	<CJ1,CJ2>	
313	R63 4H6 425	G		Capillary tube assy		1	1			KB49D217G01	<CP1>	
314	R63 S84 401	G		Expansion valve	CAM-B50	1	1			P632418X01	<LEV1>	
315	R63 7F3 402	G		Expansion valve	HAM-BDMD	1	1			P632402X02	<LEV4>	
316	R61 008 454	G		Strainer	25.4D	1	1			KB48K250G01	<ST1>	
317	R61 Y21 243	W		Solenoid coil	STF-01	1	1			P472028X01	<21S4a>	
318	R61 011 243	G		Solenoid coil	VPV UL	4	4			P472047X01	<SV1a,SV2,SV6,SV9>	
319	R63 011 401	G		Solenoid coil	CAM	1	1			P472059X02	<LEV1>	
320	R63 4H8 402	G		Solenoid coil	HAM	1	1			P472034X03	<LEV4>	
321	R61 006 288	G		Pressure sensor	HP	1	1			KB00H904G09	<63HS1>	
322	R63 008 288	G		Pressure sensor	HP	1	1			KB00F899G06	<63HS2>	
323	R61 007 288	G		Pressure sensor	LP	1	1			KB00H904G10	<63LS>	
324	R63 Y11 208	G		Pressure switch	ACB1UB28W	1	1			P426320X01	<63H1>	
325	R61 060 200	G		Thermistor	CHIP TH 15kΩ	4	4			P418065X01	<TH2,TH3,TH6,TH7>	
326	R63 911 202	G		Thermistor		1	1			P425416X02	<TH4>	
327	R63 Y07 237	G		Belt heater		1	1			P493781X02	<CH11>	
328	R61 443 480	G		Heat exchanger assy	TJMU-A	1				KB01C181G16		
329	R61 444 480	G		Heat exchanger assy	TJMU-A BS		1			KB01C181G17		
330	R63 852 860	G		Rubber mount	For compressor	4	4			W897574H01		
331	R61 001 310	G		Sensor holder		1	1			KB25B471G02		
332	R61 001 132	G		Attachment plate		1				KB02K008H01		
333	R61 002 132	G		Attachment plate	BS		1			KB02K008H02		
334	R61 003 609	G		Attachment saddle		1				KB02H227G01		
335	R61 004 609	G		Attachment saddle	BS		1			KB02H227G02		
336	R63 001 456	G		Saddle		1				KB02H226H01		
337	R63 002 456	G		Saddle	BS		1			KB02H226H02		
338	R63 935 905	G		Packing		2	2			W483653G05		
339	R61 010 087	G		Upset screw	M5×12	3	3			S516322H01		



No.	Part No.	G : RoHS Apply Only W : RoHS Apply by Running Change		Spec.	PUHY-HP96TJMU-A	PUHY-HP96TJMU-A-BS				Dwg. No.	Notes for the models	Revision info.
			Part Name									
401	R69 077 478		Scroll compressor	HNK78FA1(S)	1	1				EP10113B05		
402	R61 069 484	G	Accumulator assy		1					KD00G099G01		
403	R61 070 484	G	Accumulator assy	BS		1				KD00G099G02		
404	R61 016 487	G	Oil separator assy		1	1				KB00G667G02		
405	R61 004 235	G	Two way valve	MHV-1104	1	1				P637048X01	<SV5b>	
406	R63 Y05 154	G	Four way valve	STF-07	2	2				P633119X01	<21S4a,21S4b>	
407	R63 R43 418	G	Check valve	BCV-1005	1	1				P639165X01	<CV1>	
408	R61 009 410	G	Ball valve	JA10YGME	1	1				P636358X01	<BV1>	
409	R61 004 540	G	Valve	VSAMH4SSCM-LA1	1	1				P636345X01	<BV2>	
410	R61 015 401	G	Linear expansion valve	EFM-A 1700XA	2	2				P632461X01	<LEV2a,LEV2b>	
411	R63 P90 232	G	Solenoid valve	VPV-152D	2	2				P631277X01	<SV1a,SV9>	
412	R63 851 921	G	Solenoid valve	VPV	2	2				P631822X01	<SV2,SV6>	
413	R63 R34 413	G	Check joint L	R410A	2	2				P666004X02	<CJ1,CJ2>	
414	R63 002 425	G	Capillary tube assy		1	1				KB49F229G01	<CP1>	
415	R63 S84 401	G	Expansion valve	CAM-B50	1	1				P632418X01	<LEV1>	
416	R63 7F3 402	G	Expansion valve	HAM-BDMD	1	1				P632402X02	<LEV4>	
417	R61 008 454	G	Strainer	25.4D	1	1				KB48K250G01	<ST1>	
418	R61 Y21 243	W	Solenoid coil	STF-01	3	3				P472028X01	<21S4a,21S4b,SV5b>	
419	R61 011 243	G	Solenoid coil	VPV UL	4	4				P472047X01	<SV1a,SV2,SV6,SV9>	
420	R63 011 401	G	Solenoid coil	CAM	1	1				P472059X02	<LEV1>	
421	R63 4H8 402	G	Solenoid coil	HAM	1	1				P472034X03	<LEV4>	
422	R61 T01 227	G	Pressure sensor	HP	1	1				KB00F899G07	<63HS1>	
423	R63 008 288	G	Pressure sensor	HP	1	1				KB00F899G06	<63HS2>	
424	R61 025 288		Pressure sensor	LP	1	1				KB00F899G13	<63LS>	
425	R63 Y11 208	G	Pressure switch	ACB1UB28W	1	1				P426320X01	<63H1>	
426	R61 060 200	G	Thermistor	CHIP TH 15kΩ	4	4				P418065X01	<TH2,TH3,TH6,TH7>	
427	R63 911 202	G	Thermistor		1	1				P425416X02	<TH4>	
428	R63 Y07 237	G	Belt heater		1	1				P493781X02	<CH11>	
429	R61 445 480	G	Heat exchanger assy	TJMU-A	1					KD01G041G01		
430	R61 446 480	G	Heat exchanger assy	TJMU-A BS		1				KD01G041G02		
431	R63 852 860	G	Rubber mount	For compressor	4	4				W897574H01		
432	R61 001 310	G	Sensor holder		1	1				KB25B471G02		
433	R61 001 132	G	Attachment plate		1					KB02K008H01		
434	R61 002 132	G	Attachment plate	BS		1				KB02K008H02		
435	R61 003 609	G	Attachment saddle		1					KB02H227G01		
436	R61 004 609	G	Attachment saddle	BS		1				KB02H227G02		
437	R63 001 456	G	Saddle		1					KB02H226H01		
438	R63 002 456	G	Saddle	BS		1				KB02H226H02		
439	R63 935 905	G	Packing		2	2				W483653G05		
440	R61 010 087	G	Upset screw	M5×12	3	3				S516322H01		

PUHY-HP72TJMU-A(-BS)
PUHY-HP96TJMU-A(-BS)

CONTROL BOX PARTS



PUHY-HP72TJMU-A(-BS)
 PUHY-HP96TJMU-A(-BS)

CONTROL BOX PARTS

No.	Part No.	G : RoHS Apply Only W : RoHS Apply by Running Change		Spec.	PUHY-HP72TJMU-A	PUHY-HP72TJMU-A-BS	PUHY-HP96TJMU-A	PUHY-HP96TJMU-A-BS	Dwg. No.	Notes for the models	Revision info.
			Part Name								
501	R61 324 305		Control box		1				KE80C084G78		
502	R61 325 305		Control box	BS		1			KE80C084G79		
503	R61 326 305		Control box				1		KE80C084G80		
504	R61 327 305		Control box	BS				1	KE80C084G81		
505	R61 N22 246	W	Terminal block		1	1	1	1	S436005H02	<TB1>	
506	R61 5H6 293	W	Noise filter	board, coil, band	1	1	1	1	KE80C054G02		
507	R61 R34 249	W	IPM (Power module)		1	1			W848413G18	<IPM>	
508	R61 G35 249		IPM (Power module)				1	1	W848413G12	<IPM>	
509	R61 L73 320	W	Diode		1	1			W876941G01		
510	R61 850 318	W	Diode				1	1	W876941G07		
511	R61 008 200	W	Thermistor		1	1	1	1	P414127X01	<THHS>	
512	R61 007 259	W	Reactor		1	1			P715432X02	<DCL>	
513	R61 004 259	W	Reactor				1	1	P715433X02	<DCL>	
514	R63 A42 289	G	DC current sensor		1	1	1	1	P419079X03	<DCCT1>	
515	R61 5H6 280	W	INV board		1	1	1	1	W647875G07		
516	R61 5H6 256	W	Capacitor		1	1	1	1	P412311X01		
517	R61 015 287	W	AC current sensor		1	1	1	1	P418087X01	<ACCT1,ACCT2>	
518	R61 5H7 287	W	AC current sensor		1	1	1	1	P418039X01	<ACCT3>	
519	R61 051 280	G	M-NET board		1	1	1	1	KE80C055G04		
520	R61 056 281		Control board		1	1	1	1	KE80C153G65		
521	R61 5H4 280		Fan board		1	1	1	1	W652171G06		
522	R63 992 964	G	Fuse	3.15A AC250V T	2	2	2	2	S423001H29		

