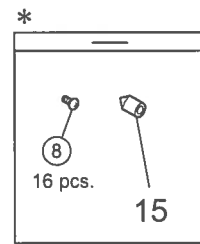
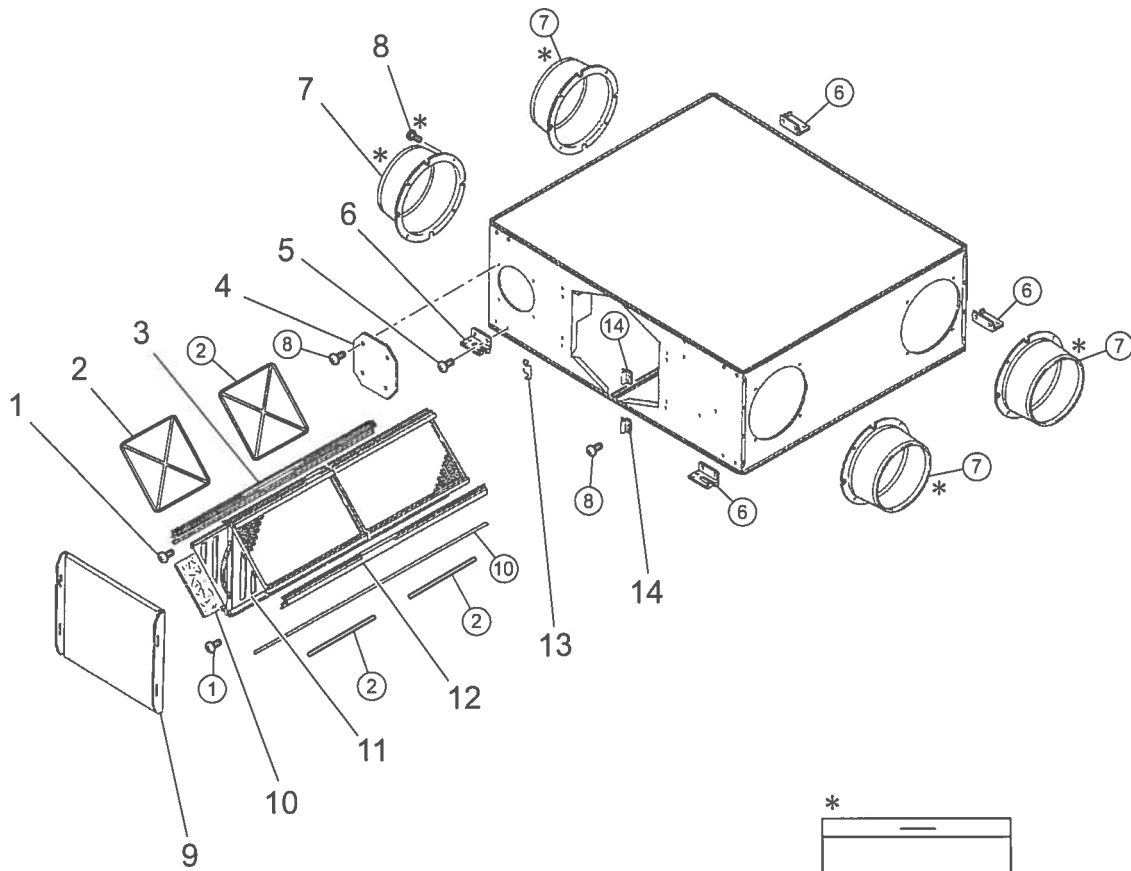


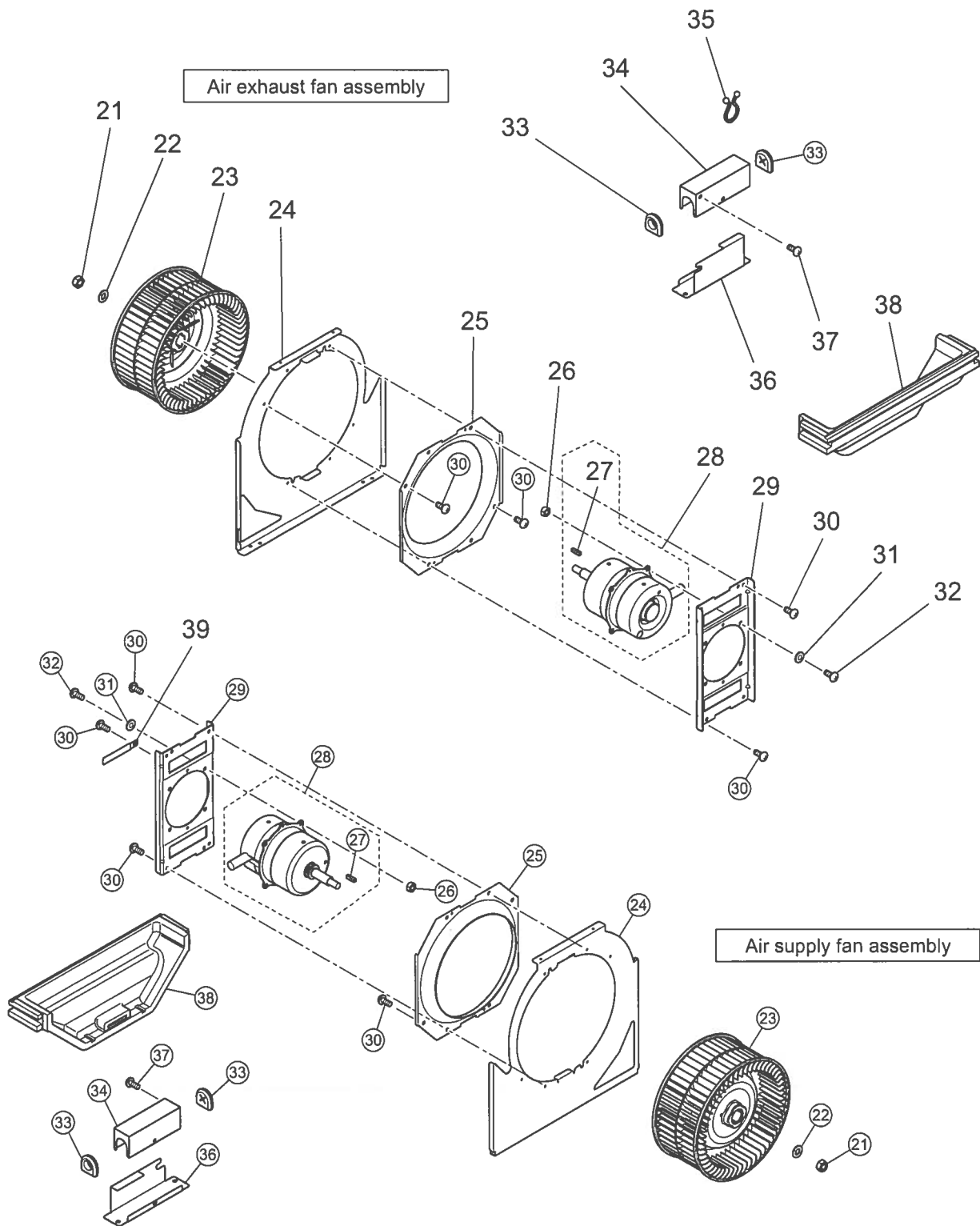
LGH-F470RX5-E



* shows accessory parts.

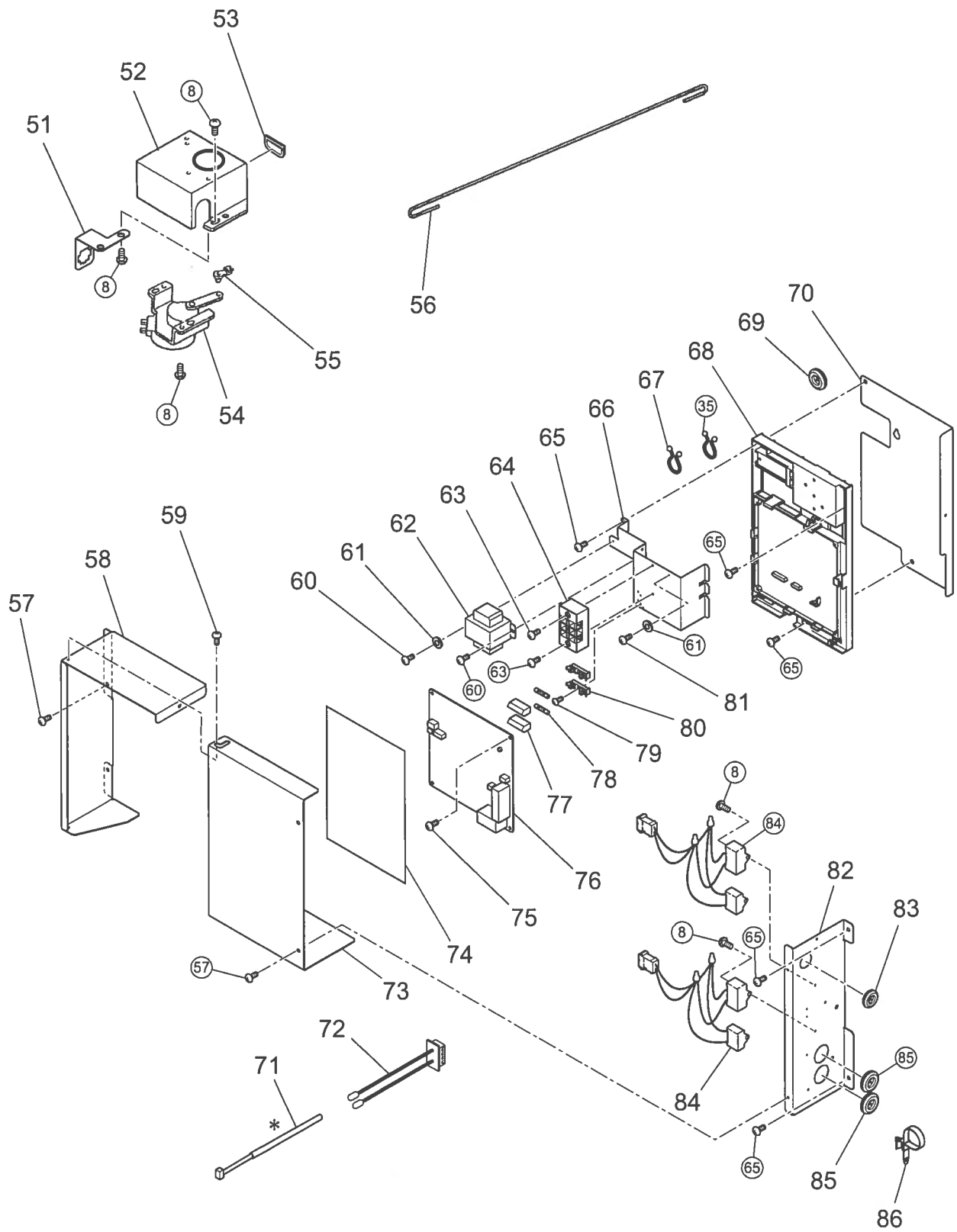
Model LGH-F470RX5-E

No.	Parts No.	Name of part	Q'ty pcs/unit for safety	Critical Remarks	Price
1.	R50 541 045	Special screw 4×22.5	2		
2.	R50 522 710	Filter stopper	8		
3.	R50 543 383	Core guide (left)	1		
4.	R50 543 704	Cover	2		
5.	H00 000 244	PT screw 6×12	16		
6.	R50 095 380	Hanger	4		
7.	Y50 021 609	Flange	4		
8.	H00 000 487	PTT screw 4×8	44		
9.	R50 543 487	Maintenance cover	1		
10.	R50 529 717	Filter	4	▲	
11.	Y50 152 710	Lossnay core	2	▲	With filter stoppers
12.	R50 543 384	Core guide (right)	1		
13.	R50 466 344	Hinge	1		
14.	Y50 029 712	Fix piece	2		
15.	D41 030 318	Screw cap	6		



Model LGH-F470RX5-E

No.	Parts No.	Name of part	Q'ty pcs/unit for safety	Critical Remarks	Price
21.	R50 218 067	Special nut (12)	2		Left-handed
22.	K83 466 113	Washer (12)	2		
23.	R50 543 480	Centrifugal fan	2	▲	φ 245
24.	R50 543 709	Fan base	2		
25.	R50 543 708	Inlet ring	2		
26.	H00 061 050	Nut (6)	8		
27.	Y50 033 104	Key	2		5×5×11.5
28.	Y50 152 453	Motor	2	▲	
29.	Y50 117 712	Motor fix plate	2		
30.	H00 189 007	PTT screw 5×10	16		
31.	M34 043 080	Special washer (6)	8		
32.	H00 157 008	PT screw 6×20	8		
33.	M45 649 226	Cord bush	4		
34.	Y50 115 709	Connector cover	2		
35.	M45 017 228	Cord band	2		
36.	Y50 115 710	Connector plate	2		
37.	H00 312 007	PTT screw 4×6	2		
38.	R50 543 489	Separator	2		
39.	D41 123 223	Lead wire clip	1		



* shows accessory parts.

Model LGH-F470RX5-E

No.	Parts No.	Name of part	Q'ty pcs/unit for safety	Critical	Remarks	Price
51.	R50 533 693	Fix piece	1			
52.	Y50 151 706	Damper motor cover	1			
53.	Y50 115 225	Bush	1			
54.	Y50 061 260	Damper motor (GM)	1	▲	AC220·240V	
55.	R50 054 225	Special bush	1			
56.	Y50 117 151	Rod	1			
57.	H00 000 349	PT screw 4×8	5			
58.	Y50 151 705	Side plate (left)	1			
59.	M35 061 045	Special screw 4×3.5	2			
60.	H00 000 003	PP screw 4×8	2			
61.	H00 013 076	Lock washer (4)	2			
62.	Y50 115 216	Transformer	1	▲	AC230V	
63.	H00 154 005	PPT screw 4×12	2			
64.	K81 432 236	Terminal block	1	▲	3P ML-20	
65.	H00 000 332	PTT screw 4×10	7			
66.	Y50 151 709	Terminal block fix plate	1			
67.	K83 170 228	Cord band	2		White	
68.	R50 546 705	Circuit fix plate	1			
69.	R50 476 225	Bush	1			
70.	Y50 151 708	Control base	1			
71.	Y50 047 231	Connection cable	1	▲		
72.	R50 548 167	Thermistor	1	▲		
73.	Y50 151 704	Control cover	1			
74.	Y50 151 358	Wiring diagram	1			
75.	H00 003 005	PPT screw 3×8	1			
76.	Y50 115 171	Circuit board	1	▲	LG-X3-E	
77.	Y55 001 280	Fuse cover	2			
78.	Y50 113 280	Fuse	2	▲	6.3A·AC250V	
79.	H00 000 676	PPT screw 3×10	2			
80.	Y55 001 281	Fuse holder	2			
81.	H00 011 008	PT screw 4×8 (BS)	1			
82.	Y50 151 707	Side plate (right)	1			
83.	K83 223 225	Bush	1			
84.	Y50 152 287	Capacitor	2	▲	9.5 μF·440VAC	
85.	K82 163 225	Bush	2			
86.	Y55 001 223	Cord band	1			