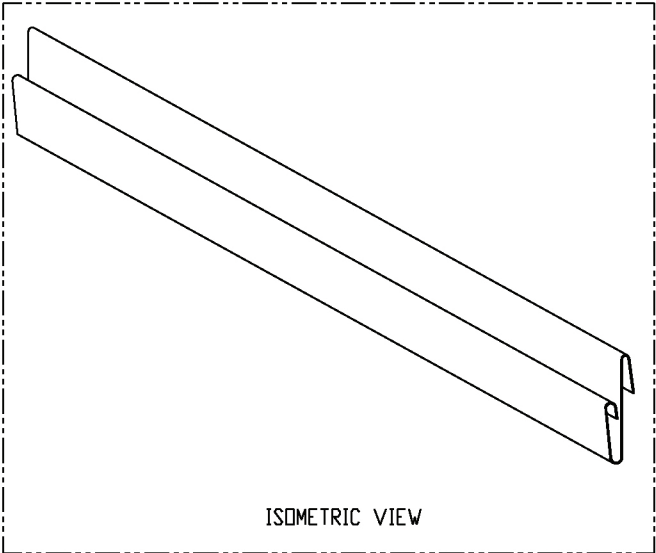


4

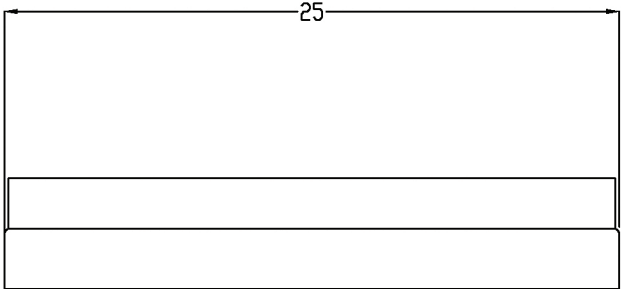
3

2

1



ISOMETRIC VIEW



25

**PROPRIETARY INFORMATION**  
THIS DRAWING AND/OR DATA SHEET, AND THE CONFIDENTIAL PROPRIETARY INFORMATION THEREON, ARE THE PROPERTY OF M&M MANUFACTURING, INC. AND ARE NOT TO BE REPRODUCED OR COPIED IN WHOLE OR IN PART, OR USED FOR UNAUTHORIZED MANUFACTURING OR ANY OTHER EXPLOITATION OF THE ITEM DISCLOSED THEREIN, OR IN ANY OTHER WAY DISCLOSED OR USED FOR FURNISHING INFORMATION.



M&M MFG.CO, INC.  
4001 MARK IV PKWY.  
P.O. BOX 163409  
FORT WORTH, TX 76161  
PH. (817) 336-2311  
FAX (817) 625-5193

CONFIDENTIAL

THIS DOCUMENT IS THE CONFIDENTIAL PROPRIETARY INFORMATION OF M&M MFG. CO. AND SHALL NOT BE DISCLOSED, COPIED, OR USED FOR ANY PURPOSE OTHER THAN FOR WHICH THIS DOCUMENT IS SPECIFICALLY FURNISHED WITHOUT PRIOR WRITTEN CONSENT AND APPROVAL OF M&M MFG. CO.

Part title			
SNAP ON RAIL			
Proj title			
SNAP ON RAIL SUBMITTAL DRAWING			
Tolerances Unless Otherwise Specified			
Fractional ± .01			
Dr by	J. GONZALEZ	Date	11-16-2011
Scale	FULL	Asst'd	XXXX-XXXX
App'd by	K. HIGHLAND	Date	11-16-2011
Sheet	1 of 1	Page	1
Part no.			
MP-SDR			

NOTES: Material: ASTM-A653 CS B galvanized steel (30 gauge)  
Standard length is 25'  
Custom length can be made as per costumer request.