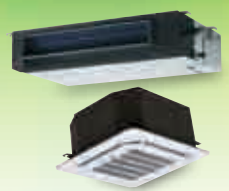


# KoolKing™

DUCTLESS MINI-SPLITS  
SINGLE & MULTI-ZONE  
HORIZONTAL AIR CONDITIONERS  
PORTABLE UNITS  
FREE MATCH COMPONENTS



AN EXCELLENT CHOICE IN COOLING, COMFORT AND CONVENIENCE

# Why choose a Mini-Split system?

Installing or expanding an existing air conditioning and heating system with its associated ductwork can be a daunting and expensive undertaking. With a mini-split (ductless) system, you benefit from the comfort of central air conditioning and heating in a convenient, economical, energy-efficient package.



**The condenser portion of the system is conveniently placed outside... with lines connecting to the wall-mounted unit indoors.**

## Easy to Install

Rather than running additional ductwork through a home or workplace setting, our wall-mounted mini-split units can be installed in as little as an hour using just one small structural hole in the wall. The condenser portion of the system is conveniently placed outside, with lines connecting to the wall-mounted unit. Because this unit is not placed within the home or in a window, mini-split systems offer an extremely quiet cooling option.

## Energy Savings



All of our products are designed to be energy efficient, with SEERs (seasonal energy efficiency ratings) that meet and in many cases exceed the governmental standard of 13. Our inverter technology brings the SEER up to 21 while enhancing comfort and minimizing temperature fluctuations. Many of our models have earned the Energy Star® seal, which is recognized as the leading international rating standard for energy-efficient consumer products. We also offer solar models that harness the sun's energy for even greater savings and environmental protection.

## Options to Meet Your Needs

Our mini-split options include a wide range of cooling and heating capacities depending on your needs. If you need to cool multiple zones, several indoor wall-mounted units can be linked to one condenser and operated independently of each other, giving you even greater temperature control.

## Warranty

Warranty on all Kool King systems from date of purchase, one year on all parts plus an additional 4 years on compressor.

## Saving You Money

Mini-split systems offer the advantages of central air conditioning without the associated costs. They're not only designed to be efficient, but they also save money through:

- Lower installation costs
- Greater control over individual room temperatures
- Lower costs on electric bills

## Find the Mini-Split unit that's right for you

Measure your room dimensions:  
Length x Width = Square Feet

Choose recommended BTU size from the chart:

Area to be cooled (square feet)	Recommended BTU
100 – 150	5,000
150 – 250	6,000
250 – 300	7,000
300 – 350	8,000
350 – 400	9,000
400 – 450	10,000
450 – 550	12,000
550 – 700	14,000
700 – 1,000	18,000
1,000 – 1,200	21,000
1,200 – 1,400	23,000
1,400 – 1,500	24,000
1,500 – 2,000	30,000
2,000 – 2,500	34,000



**BEDROOMS**



**RETAIL SPACE**



**RESTAURANTS**

# Mini-Split systems are a great choice for

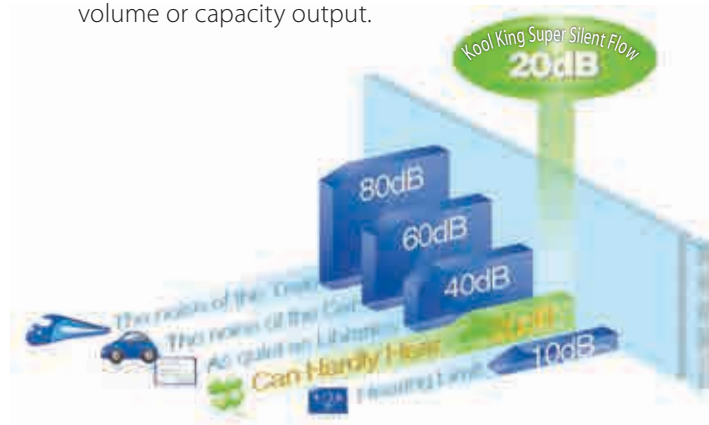
- Home additions
- Garage renovations
- Sunrooms
- Warehouse offices
- Small-scale new construction
- Apartment buildings
- Retail space
- Storage facilities
- Bedrooms
- Office and work settings
- Schools
- Rooms without: Ductwork, Windows, Exterior Walls
- Family rooms
- Restaurants
- Medical facilities

## Comfort



### Low Noise Airflow System

A large diameter cross-flow fan further minimizes noise by allowing a lower fan speed without impacting airflow volume or capacity output.



**Turbo Operation** - With this function, the air conditioner will maximize the output of cooling or heating capacity, allowing the room to cool down or heat up rapidly, and attain the desired temperature in the shortest amount of time.

## Convenience



**Timer** - The timer can be set to start and stop at any point in a 24-hour period.



**Auto-Restart** - If power is interrupted, the unit will automatically restart with the previous settings when power resumes.



**Washable Filter** - Allows for easy cleaning, ensuring maximum operating efficiency.

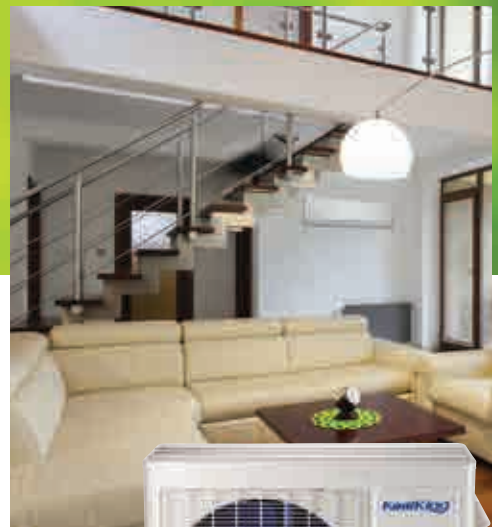


**Two-Way Piping Connection** - For greater installation convenience, connective piping and drainage hosing can be attached to the left or the right side of the indoor unit.



**Low Ambient Cooling** - This built-in kit allows the air conditioner to be used in temperatures as low as 5°F (-15° C) for cooling.

# Ductless Split Systems Fairwind Series



## Standard Features



Heating Belt (Outdoor)



Cold Catalyst Filter



VLED Display



Turbo Mode



Heating Belt (Outdoor)



Temp Compensation



Sleep Mode



## Low Ambient Cooling Function

A special design allows the unit to operate down to -15°C.

With low ambient cooling function, the outdoor fan speed can be changed according to outdoor temperature and the AC can run smoothly under the temperature as low as -15°C. No additional kit required.



# Up to 20 SEER Heat Pump Inverter

SPECIFICATION						
Model No.	Indoor Unit Outdoor Unit	MS12F-09HRFN1-MT0W(A) MOB-09HFN1-MT0W	MS12F-12HRFN1-MT0W MOZ-12HFN1-MT0W	MS12F1-17HRFN1-MT0W MOF-17HFN1-MT0W	MS12F1-22HRFN1-MS0W MOY-22HFN1-MS0W	
CAPACITY & PERFORMANCE						
Cooling Capacity	Btu/h	9000	11500	17000	22000	
SEER	Btu/w	20	20	20	20	
Heating Capacity	Btu/h	9500	12000	18000	24000	
HSPF4	Btu/w	10	9.6	9.6	9.6	
Indoor Noise Level (Hi/Mi/Lo)	dB(A)	41/37/31	41/37/31	48/46/40	48/46/40	
ELECTRICAL PARTS						
Power Supply	V~,Hz,Ph	208-230, 60, 1	208-230, 60, 1	208-230, 60, 1	208-230, 60, 1	
Minimum Circuit Ampacity	A	7.5	15.0	14.0	15.0	
Max. Fuse	A	15.0	15.0	20.0	25.0	
DIMENSION & WEIGHT						
Net Dimension (WxDxH)	Indoor	mm	800x188x275	800x188x275	1045x235x315	1045x235x315
		inch	31.5x74x10.8	31.5x74x10.8	41.1x9.3x12.4	41.1x9.3x12.4
	Outdoor	mm	780x250x540	810x310x558	845x320x700	945x395x810
		inch	30.7x9.8x21.3	31.9x12.2x22.0	33.3x12.6x27.6	37.2x15.6x31.9
Packing Dimension Indoor (WxDxH)	Indoor	mm	865x265x350	865x265x350	1135x395x315	1135x395x315
		inch	34.1x10.4x13.8	34.1x10.4x13.8	44.7x11.6x12.4	44.7x11.6x12.4
	Outdoor	mm	910x335x585	930x400x615	965x395x755	1090x475x855
		inch	35.8x13.2x23.0	36.6x15.8x24.2	38.0x15.6x29.7	42.9x18.7x33.7
Net Weight	Indoor	kg/lbs	8.0/17.6	8.0/17.6	12/26.5	12/26.5
		kg/lbs	28/61.7	37/81.4	46.5/102.5	63/138.0
Gross Weight	Indoor	kg/lbs	10.0/22.1	10.0/22.1	15.5/34.2	26.5/34.2
		kg/lbs	30/66.1	39.8/87.6	50.5/111.3	67.5/148.5
	Outdoor	kg/lbs				
		kg/lbs				
REFRIGERANT & PIPING						
Refrigerant R410A	g/oz	1200/42.3	1150/40.6	1650/58.2	2350/82.9	
Piping Size - Liquid Side/Gas Side	mm (inch)	Ø6.35/Ø9.52(1/4"/3/8")	Ø6.35/Ø12.7(1/4"/1/2")	Ø6.35/Ø12.7(1/4"/1/2")	Ø9.52/Ø15.9(3/8"/5/8")	

# Ductless Split Systems

## Oasis Series



### Standard Features



Heating Belt (Outdoor)



Auto Restart Function



Turbo Mode



Cold Catalyst Filter



Auto Swing



Timer



Louver Position Memory Function



Refrigerant Leakage Detect



Low Ambient Cooling



### Low Ambient Cooling Function

A special design allows the unit to operate down to -15°C.

With low ambient cooling function, the outdoor fan speed can be changed according to outdoor temperature and the AC can run smoothly under the temperature as low as -15°C. No additional kit required.

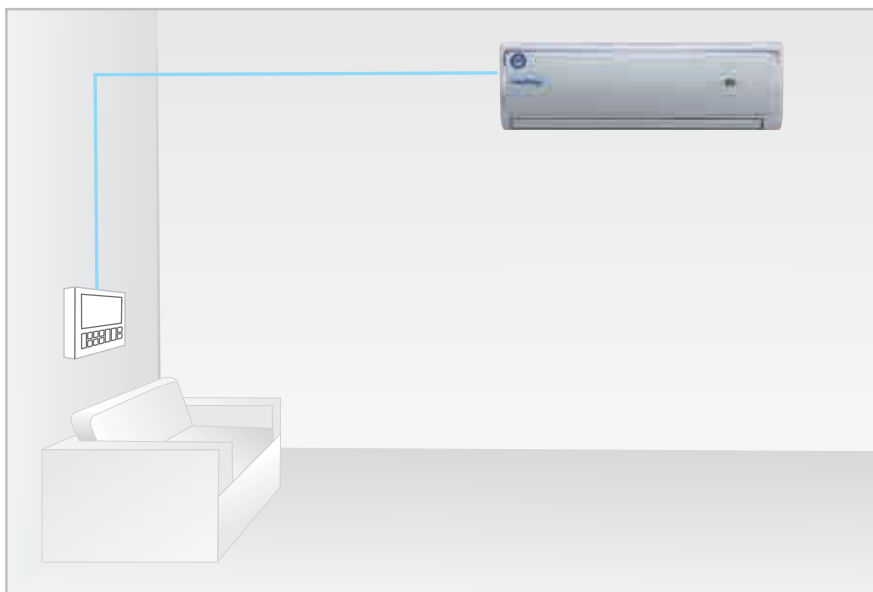


# 18 SEER Heat Pump Inverter



**! While Supplies Last**

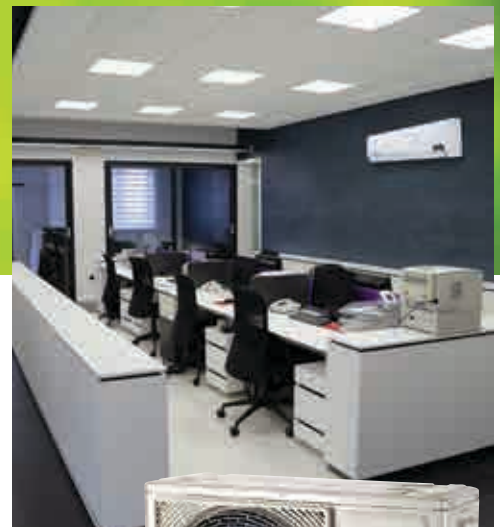
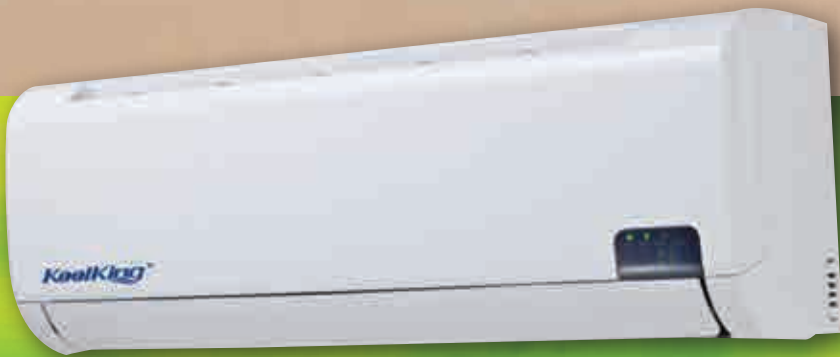
SPECIFICATION								
Model No.	Indoor Unit	MS11M-09HRFN1-BROW	MS11M-12HRFN1-BROW	MS11M-18HRFN1-MROW	MS11M-23HRDN1-MROW	MS11M-28HRFN1-MROW	MS11M-33HRFN1-MN10W	
	Outdoor Unit	MOB-09HFN1-BROW	MOZ-12HFN1-BROW	MOF-18HFN1-MROW	MOG-23HFN1-MROW	MOY-28HFN1-MROW	MOY-33HFN1-MNOW	
CAPACITY & PERFORMANCE								
Cooling Capacity	Btu/h	9000	12000	17500	23000	28500	33000	
SEER	Btu/w	18	19	21	19	18	15	
Heating Capacity	Btu/h	9500	12500	18000	24000	32000	35500	
HSPF4	Btu/w	7.5	7.5	7.2	7.2	9.6	9.6	
Indoor Noise Level (Hi/Mi/Lo)	dB(A)	42/38/27	41/35/27	47/40/31	50/45/40	51/45.5/40	50.5/45/39	
ELECTRICAL PARTS								
Power Supply	V~,Hz,Ph	115, 60, 1	115, 60, 1	208-230, 60, 1	208-230, 60, 1	208-230, 60, 1	208-230, 60, 1	
Minimum Circuit Ampacity	A	18.0	18.0	13.0	15.0	15.0	20.0	
Max. Fuse	A	30.0	30.0	20.0	25.0	25.0	30.0	
DIMENSION & WEIGHT								
Net Dimension (WxDxH)	Indoor	mm	750x198x280	835x198x280	990x218x315	1186x258x343	1186x258x343	1186x258x343
		inch	29.53x7.80x11.02	32.87x7.80x11.02	38.98x8.58x12.40	46.69x10.16x13.50	46.69x10.16x13.50	46.69x10.16x13.50
	Outdoor	mm	780x250x540	810x310x558	845x320x700	900x315x860	945x395x810	945x395x810
		inch	30.71x9.84x21.26	31.89x12.20x21.97	33.27x12.60x27.56	35.43x12.40x33.86	37.20x15.55x31.89	37.20x15.55x31.89
Packing Dimension Indoor (WxDxH)	Indoor	mm	830x270x355	910x270x355	1065x300x400	1265x420x340	1265x420x340	1265x420x340
		inch	32.68x10.63x13.98	35.83x10.63x13.98	41.93x11.81x15.75	49.80x16.53x13.39	49.80x16.53x13.39	49.80x16.53x13.39
	Outdoor	mm	910x335x585	930x400x615	965x395x755	1043x395x915	1090x475x855	1090x475x855
		inch	35.83x13.19x23.03	36.61x15.75x24.21	37.99x15.55x29.72	41.06x15.55x36.02	42.91x18.70x33.66	42.91x18.70x33.66
Net Weight	Indoor	kg/lbs	8.0/17.64	9/19.84	12/26.46	18.5/40.79	18.2/40.12	18.2/40.12
	Outdoor	kg/lbs	33/72.75	37/81.57	46.5/102.51	59/130.07	57.6/126.98	70.3/154.98
Gross Weight	Indoor	kg/lbs	10.5/23.15	11.5/25.35	14/30.86	23/50.71	22.8/50.26	22.8/50.26
	Outdoor	kg/lbs	35.5/78.26	39/85.98	50.5/111.33	63/138.89	62.2/137.13	74.9/165.12
REFRIGERANT & PIPING								
Refrigerant R410A	g/oz		1200/42.33	1250/44.09	1900/67.0	2430/85.7	2250/79.36	3000/105.82
Piping Size - Liquid Side/Gas Side	mm (inch)		Ø6.35/Ø9.52 (1/4"/3/8")	Ø6.35/Ø12.7 (1/4"/1/2")	Ø6.35/Ø12.7 (1/4"/1/2")	Ø9.52/Ø15.9 (3/8"/5/8")	Ø9.52/Ø16 (3/8"/5/8")	Ø9.52/Ø16 (3/8"/5/8")



### Wired Controller (Optional)

Compared with infrared remote controller, wired controller can be fixed on the wall and avoid mislaying. It's mainly used for commercial zone and makes air conditioner control more convenient.

# Ductless Split Systems Luna Series



## Standard Features



Auto Restart Function



Turbo Mode



Temp Compensation



Cold Catalyst Filter



Sleep Mode



## Low Ambient Cooling Function

A special design allows the unit to operate down to -15°C.

With low ambient cooling function, the outdoor fan speed can be changed according to outdoor temperature and the AC can run smoothly under the temperature as low as -15°C. No additional kit required.





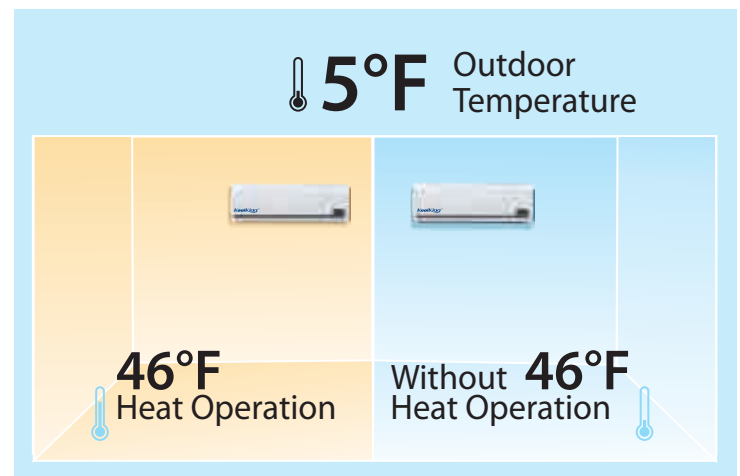
# 16 SEER Heat Pump Inverter

SPECIFICATION			
Model No.	Indoor Unit		MSC-30HRDN1-MP0W
	Outdoor Unit		MOG-30HDN1-MP0W
CAPACITY & PERFORMANCE			
Cooling Capacity	Btu/h		30000
SEER	Btu/w		16
Heating Capacity	Btu/h		30000
HSPF4	Btu/w		9.6
Indoor Noise Level (Hi/Mi/Lo)	dB(A)		50/47/43
ELECTRICAL PARTS			
Power Supply	V~,Hz,Ph		230, 60, 1
Minimum Circuit Ampacity	A		16.0
Max. Fuse	A		25.0
DIMENSION & WEIGHT			
Net Dimension (WxDxH)	Indoor	mm	1445x277x340
		inch	56.89x10.91x13.39
	Outdoor	mm	900x315x860
		inch	35.43x12.40x33.86
Packing Dimension Indoor (WxDxH)	Indoor	mm	1530x420x365
		inch	60.24x16.54x14.37
	Outdoor	mm	1043x395x915
		inch	41.06x15.55x36.02
Net Weight	Indoor	kg/lbs	24/52.91
		Outdoor	kg/lbs
Gross Weight	Indoor	kg/lbs	32/70.55
		Outdoor	kg/lbs
REFRIGERANT & PIPING			
Refrigerant R410A	g/oz		2550/89.94
Piping Size - Liquid Side/Gas Side	mm (inch)		Ø9.52/Ø15.9(3/8"/5/8")



## Ionizer

KoolKing air conditioners takes advantage of Ionizer Technology to bring the refreshing air to your home.

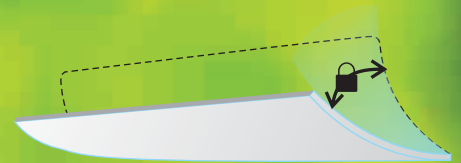


## Freeze Protection

In heating operation, the preset temperature of the air conditioner can be as low as 46°F, which keeps the room temperature steady at 46°F and prevents household from freezing when the house is vacant for a long time in severe cold weather.

# Ductless Split Systems

## Neola Series



### Louver Position Memory Function

Horizontal louvers will automatically move to the same position as you set last time when the unit turned on.



### Standard Features



Auto Restart Function



Temp Compensation



Cold Catalyst Filter



Refrigerant Leakage Detect



Turbo Mode



Louver Position Memory Function



Sleep Mode



2 Ways Draining Connection



### Low Ambient Cooling Function

A special design allows the unit to operate down to -15°C.

With low ambient cooling function, the outdoor fan speed can be changed according to outdoor temperature and the AC can run smoothly under the temperature as low as -15°C. No additional kit required.



### 2 Ways Draining Connection

Both left and right sides of the indoor unit are possible for outstretch if connective piping and drainage hose.

# 15 SEER Cooling Inverter

SPECIFICATION						
Model No.	Indoor Unit Outdoor Unit	MS11D-09CRDN1-BN10W MOR-09CDN1-BN10W	MS11D-12CRDN1-BN10W MOR-12CDN1-BN10W	MS11D-18CRDN1-MN10W MOC-18CDN1-MN10W	MS11D-22CRDN1-MN10W MOF-22CDN1-MN10W	
CAPACITY & PERFORMANCE						
Cooling Capacity	Btu/h	9000 (2250~10000)	12000 (2600~13500)	18000 (5300~22000)	22000 (6500~25000)	
SEER	Btu/w	15	15	15	15	
Heating Capacity	Btu/h	-	-	-	-	
HSPF4	Btu/w	-	-	-	-	
Indoor Noise Level (Hi/Mi/Lo)	dB(A)	39/35/28	39/35/29	42/39/31	47/45/39	
ELECTRICAL PARTS						
Power Supply	V~,Hz,Ph	115,60,1	115,60,1	208-230,60,1	208-230,60,1	
Minimum Circuit Ampacity	A	19.0	20.0	14.0	16.0	
Max. Fuse	A	30.0	30.0	20.0	25.0	
DIMENSION & WEIGHT						
Net Dimension (WxDxH)	Indoor	mm	680x178x255	770x188x255	905x198x275	1030x218x315
		inch	26.77x7.01x10.04	30.31x7.40x10.04	35.63x7.80x10.83	40.55x8.58x12.40
	Outdoor	mm	660x265x540	660x265x540	760x285x590	845x320x700
		inch	25.98x10.43x21.26	25.98x10.43x21.26	29.92x11.22x23.23	33.27x12.60x27.56
Packing Dimension Indoor (WxDxH)	Indoor	mm	745x255x330	835x265x330	970x270x345	1115x395x300
		inch	29.33x10.04x12.99	32.87x10.43x12.99	38.19x11.22x13.58	43.90x15.55x11.81
	Outdoor	mm	790x355x620	790x355x620	887x355x645	965x395x755
		inch	31.10x13.98x24.41	31.10x13.98x24.41	34.92x13.98x25.39	37.99x15.55x29.72
Net Weight	Indoor	kg/lbs	7/15.43	7.5/16.53	9/19.84	12/26.46
		kg/lbs	28.5/62.83	29.5/65.04	34.5/76.06	44.5/98.11
Gross Weight	Indoor	kg/lbs	8/17.64	9.5/20.94	11.5/25.35	15/33.07
		kg/lbs	31.5/69.45	32.5/71.65	37/81.57	48/105.82
	Outdoor	kg/lbs	7/15.43	7.5/16.53	9/19.84	12/26.46
		kg/lbs	29/69.93	30/66.14	37.5/82.67	47/103.62
	Indoor	kg/lbs	8/17.64	9.5/20.94	11.5/25.35	15/33.07
		kg/lbs	32/70.55	32/70.55	40/88.18	50.5/111.33
	Outdoor	kg/lbs	8/17.64	9.5/20.94	11.5/25.35	15/33.07
		kg/lbs	32/70.55	32/70.55	40/88.18	50.5/111.33
REFRIGERANT & PIPING						
Refrigerant R410A	g/oz	900/31.8	900/31.8	850/29.9	1180/41.6	
Piping Size - Liquid Side/Gas Side	mm (inch)	Ø6.35/Ø9.52 (1/4" / 3/8")	Ø6.35/Ø12.7 (1/4" / 1/2")	Ø6.35/Ø12.7 (1/4" / 1/2")	Ø9.52/Ø15.9 (3/8" / 5/8")	

# 15 SEER Heat Pump Inverter

SPECIFICATION						
Model No.	Indoor Unit Outdoor Unit	MS11D-09HRDN1-BN10W MOR-09HDN1-BN10W	MS11D-12HRDN1-BN10W MOR-12HDN1-BN10W	MS11D-18HRDN1-MN10W MOC-18HDN1-MN10W	MS11D-22HRDN1-MN10W MOF-22HDN1-MN10W	
CAPACITY & PERFORMANCE						
Cooling Capacity	Btu/h	9000 (2250~10000)	12000 (2600~13500)	18000 (5300~22000)	22000 (6500~25000)	
SEER	Btu/w	15	15	15	15	
Heating Capacity	Btu/h	9000 (2300~11000)	12000 (2800 ~ 15500)	18000 (5500~23000)	22000(6500~25000)	
HSPF4	Btu/w	8.2	8.2	8.2	8.2	
Indoor Noise Level (Hi/Mi/Lo)	dB(A)	39/35/29	39/35/29	42/39/31	49/45/39	
ELECTRICAL PARTS						
Power Supply	V~,Hz,Ph	115,60,1	115,60,1	208-230,60,1	208-230,60,1	
Minimum Circuit Ampacity	A	19.0	20.0	14.0	16.0	
Max. Fuse	A	30.0	30.0	20.0	25.0	
DIMENSION & WEIGHT						
680x178x255 26.77x7.01x10.04	Indoor	mm	680x178x255	770x188x255	905x198x275	1030/218/315
		inch	26.77x7.01x10.04	30.31x7.40x10.04	35.63x7.80x10.83	40.55x8.58x12.40
660x265x540 25.98x10.43x21.26	Outdoor	mm	660x265x540	660x265x540	760x285x590	845x320x700
		inch	25.98x10.43x21.26	25.98x10.43x21.26	29.92x11.22x23.23	33.27x12.60x27.56
745x255x330 29.33x10.04x12.99	Indoor	mm	745x255x330	835x265x330	970x270x345	1115x395x300
		inch	29.33x10.04x12.99	32.87x10.43x12.99	38.19x10.63x13.58	43.90x15.55x11.81
790x355x620 31.10x13.98x24.41	Outdoor	mm	790x355x620	790x355x620	887x355x645	965x395x755
		inch	31.10x13.98x24.41	31.10x13.98x24.41	34.92x13.98x25.39	37.99x15.55x29.72
7/15.43 29/69.93	Indoor	kg/lbs	7/15.43	7.5/16.53	9/19.84	12/26.46
		kg/lbs	29/69.93	30/66.14	37.5/82.67	47/103.62
8/17.64 32/70.55	Indoor	kg/lbs	8/17.64	9.5/20.94	11.5/25.35	15/33.07
		kg/lbs	32/70.55	32/70.55	40/88.18	50.5/111.33
	Outdoor	kg/lbs	8/17.64	9.5/20.94	11.5/25.35	15/33.07
		kg/lbs	32/70.55	32/70.55	40/88.18	50.5/111.33
REFRIGERANT & PIPING						
Refrigerant R410A	g/oz	900/31.8	950/33.57	1200/42.3	1600/56.44	
Piping Size - Liquid Side/Gas Side	mm (inch)	Ø6.35/Ø9.52 (1/4" / 3/8")	Ø6.35/Ø12.7 (1/4" / 1/2")	Ø6.35/Ø12.7 (1/4" / 1/2")	Ø9.52/Ø15.9 (3/8" / 5/8")	

## Air Conditioners

# Horizontal Discharge, 24 Volt



Horizontal condenser is compact in size to fit in tight spaces without detracting from landscaping and outdoor living areas. Ultra quiet operation is rated as low as 59 decibels



### SPECIFICATION

Model No.		MOF-18CN1-MMOW	MOG-24CN1-MMOW	MOJ-30CN1-MMOW	MOU-36CN1-MMOW
-----------	--	----------------	----------------	----------------	----------------

### CAPACITY & PERFORMANCE

Cooling Capacity	Btu/h	18000	24000	30000	36000
Outdoor Noise Level	dB(A)	59	59	62	62

### ELECTRICAL PARTS

Power Supply	V- Ph-Hz	208~230-1-60	208~230-1-60	208~230-1-60	208~230-1-60
Max. Fuse	A	15	20	25	35
Minimum Circuit Ampacity	A	9	11.6	16	21.9

### DIMENSION & WEIGHT

Outdoor Unit	Dimension (WxDxH)	mm	845x320x700	900x315x860	990x345x965	900x350x1170
	Dimension (WxDxH)	inch	33.27x12.6x27.56	35.43x12.4x33.86	38.98x13.58x37.99	35.43x13.78x46.06
	Packing (WxDxH)	mm	965x395x755	1043x395x915	1120x435x1100	1032x443x1307
	Packing (WxDxH)	inch	37.99x15.55x29.72	41.06x15.55x36.02	44.09x17.13x43.31	40.63x17.44x51.46
	Net/ Gross weight	kg	45/48	56/60	71/82	76/87
	Net/ Gross weight	lbs.	99.21/105.82	123.46/132.28	156.53/180.78	167.55/191.8

### REFRIGERANT & PIPING

Refrigerant Type	Type		R410A	R410A	R410A	R410A
	Liquid side/ Gas side	mm(inch)	Φ6.35/Φ12.7(1/4"/1/2")	Φ9.52/Φ19(3/8"/3/4")	Φ9.52/Φ19(3/8"/3/4")	Φ9.52/Φ19(3/8"/3/4")
Refrigerant Piping	Max. pipe length	m	25	25	25	30
	Max. pipe length	ft	82	82	82	98
	Max. difference in level	m	15	15	15	20
	Max. difference in level	ft	49	49	49	66

## Air Conditioners

# Portable Air Conditioner



No water bucket to empty, Self-diagnosis and auto-protection, Flexible installation kit



### Standard Features



Auto Restart Function



Self-diagnosis & Auto Protection



Flexible Installation



Ionizer



Self-evaporative System



Optional Filter



Sleep Mode



Timer



Washable Filter



PTC Heater



#### Auto Swing

Distributes cool/warm air to a maximum area by moving flaps automatically.



#### Omni-directional Caster

With the integrated swivel casters make this portable unit easier to move.

### SPECIFICATION

Model No.	MPN6-12CRN1-BH9	MPN1-12CRN1-BH9
-----------	-----------------	-----------------

### CAPACITY & PERFORMANCE

Cooling Capability	Btu/h	12000	12000
	W	3517	3517
EER Btu/W.h	Btu/h/w	8.9	8.9
EER w/w	w/w	2.6	2.6
Heating Capability	Btu/h	—	—
Heating Capability Input	W	—	—
Air Flow Volume	m <sup>3</sup> /h	420	438
Air Flow Volume CFM	CFM	247	257
Noise Level	dB(A)	56/55/53	57.8/55.9/54.3

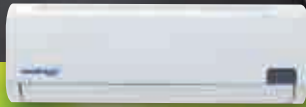
### ELECTRICAL PARTS

Power Supply	V~, Hz, Ph	115V, 60Hz, 1Ph	115V, 60Hz, 1Ph
Power Input (W)	Cooling	1350	1340
	Heater	—	—
Operating Current (A)	Cooling	11.9	11.9

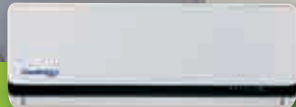
### DIMENSION & WEIGHT

Unit Dimension mm (WxDxH)	Millimeter	430x360x707	430x338x707
Unit Dimension inch (WxDxH)	Inches	17x14-3/16x27-13/16	16.9x13.3x27.8
Packing Dimension mm (WxDxH)	Millimeter	492x402x880	492x402x880
Packing Dimension inch (WxDxH)	Inches	19-3/8x15-13/16x34-5/8	19.4x15.8x34.6
Net/Gross Weight kg	Kg	265/30	29/32.5
Net/Gross Weight lbs	LBS	64/72	63.8/71.5

# Free-Match Multi-Zone Systems



Luna Series



Oasis Series



Duct



Compact Cassette



Console



## Outdoor Models

Designed to accommodate units from 12,000 - 36,000 Btu. You have a choice of Highwall, 4-Way Cassette, Ducted or Console indoor units.

## Remote Control

- Operating Mode: AUTO, COOL, DRY, HEAT\* and FAN.
- Timer Setting Function in 24 hours.
- Indoor Setting Temperature Range: 62°F - 140°F
- Full function of LCD (Liquid Crystal Display)

**NEW** **Hard Wired Controller**  
Model # KJR-120C (Optional)

- Free Match Compatible
- Weekly Programming Function



## Low Ambient Cooling Function

A special design allows the unit to operate down to -15°C.

With low ambient cooling function, the outdoor fan speed can be changed according to outdoor temperature and the AC can run smoothly under the temperature as low as -15°C. No additional kit required.

\* HEAT Mode not included on Cooling only models

Free-Match

# Single Zone Outdoor Inverter



## SPECIFICATION

Model No.		MOZ-12HFN1-MS0W	MOF-18HFN1-MU0W	MOG-24HFN1-MT0W	MOU-36HFN1-M
					
Capacity	Btu	12,000	18,000	24,000	36,000
Power Supply	V~,Hz,Ph	230,60,1	230,60,1	208-230,60,1	208-230,60,1
Minimum Circuit Ampacity	A	8.5	14	20	30
Max. Fuse	A	15.0	20	30	50
Noise Level	dB(A)	55	60.5	61.5	66
Net Dimension	mm	760x285x590	845x320x700	900x315x860	990x345x965
	inch	29.92x11.22x23.23	33.27x15.55x29.72	35.43x12.4x33.86	38.98x13.58x37.99
Packing Dimension	mm	887x355x645	965x395x755	1043x395x915	1120x435x1100
	inch	34.92x13.98x25.39	37.99x15.55x29.72	41.06x15.55x36.02	44.09x17.13x43.31
Net Weight	kg/lbs	39.5/87.08	47.5/104.72	61/134.48	73/160.94
Gross Weight	kg/lbs	42/92.59	51/112.44	65/143.3	83/182.98
Liquid Size/Gas Size	mm (inch)	Ø6.35 (1/4") / Ø12.7 (1/2")	Ø6.35 (1/4") / Ø12.7 (1/2")	Ø9.52 (3/8") / Ø15.9 (5/8")	Ø9.52 (3/8") / Ø15.9 (5/8")
Max. Pipe Length	m (ft)	20 (66)	25 (82)	50 (164)	65 (213)
Max. Height Difference	m (ft)	8 (26)	10 (33)	25 (82)	30 (98)

Free-Match

# Multi-Zone Outdoor Inverter

## SPECIFICATION

Model No.		M20D-18HFN1-M / M20D-18HFN1-M* 1 Drive 2	M30C-30HRFN1-M / M30C-30HRFN1-M** 1 Drive 3	M40C-36HRFN1-M / M40C-36HRFN1-M 1 Drive 4	 M50C-48HFN1-M 1 Drive 5v
					

## CAPACITY & PERFORMANCE

		M20D-18HFN1-M / M20D-18HFN1-M*	M30C-30HRFN1-M / M30C-30HRFN1-M**	M40C-36HRFN1-M / M40C-36HRFN1-M	M50C-48HFN1-M
Cooling Capacity	Btu/h	18000 (7000~19000)	30000 (7500~34000)	36000 (9500~43000)	48000
SEER	Btu/w	17	16	16.5	20.5
Heating Capacity	Btu/h	18000 (8000~21000)	30000 (7500~36000)	39000 (9800~44000)	51000
HSPF4	Btu/w	9.0	9.0	9.0	10.0
Indoor Noise Level	dB(A)	57	63	65	64

## ELECTRICAL PARTS

		M20D-18HFN1-M / M20D-18HFN1-M*	M30C-30HRFN1-M / M30C-30HRFN1-M**	M40C-36HRFN1-M / M40C-36HRFN1-M	M50C-48HFN1-M
Power Supply	V~,Hz,Ph	230,60,1	230,60,1	230,60,1	230,60,1
Minimum Circuit Ampacity	A	11.0	18.0	27.0	30.0
Max. Fuse	A	15.0	30.0	40.0	50.0

## DIMENSION & WEIGHT

		M20D-18HFN1-M / M20D-18HFN1-M*	M30C-30HRFN1-M / M30C-30HRFN1-M**	M40C-36HRFN1-M / M40C-36HRFN1-M	M50C-48HFN1-M
Net Dimension	mm	845x320x700	900x315x860	990x345x965	938x392x1369
	inch	33.27x12.6x27.56	35.43x12.40x33.86	38.98x13.58x37.99	36.93x15.43x53.9
Packing Dimension	mm	965x395x755	1043x395x915	1120x435x1100	1095x495x1505
	inch	37.99x15.55x29.72	41.06x15.55x36.02	44.09x17.13x43.31	43.11x19.49x59.25
Net Weight	kg/lbs	53.5/117.95	62/136.69	81.5/179.67	103.3/218/26
Gross Weight	kg/lbs	57/125.66	67/147.71	85.5/188.49	115.9/244.71

## PIPING SIZE

		M20D-18HFN1-M / M20D-18HFN1-M*	M30C-30HRFN1-M / M30C-30HRFN1-M**	M40C-36HRFN1-M / M40C-36HRFN1-M	M50C-48HFN1-M
Liquid Size/Gas Size	mm (inch)	2xØ6.35 (1/4")/2xØ9.52 (3/8")	3xØ6.35 (1/4")/3xØ9.52 (3/8")	4xØ6.35 (1/4")/4xØ9.52 (3/8")	5xØ6.35 (1/4")/3xØ9.52 (3/8") 2xØ12.7 (1/2")
Max. Length	m (ft)	30 (98)	45 (148)	60 (197)	75 (246)
Max. Height Difference	m (ft)	10 (33)	10 (33)	10 (33)	10 (33)

Note - The data above is the result of testing with Luna series wall mounted (MS9AI-09HRDN1-M(A)) indoor unit.

\* ENERGY STAR Rated when using outdoor model M20D-18HFN1-M with two high wall model MS11M-09HRFN1-MVOM

\*\* ENERGY STAR Rated when using outdoor model M30C-30HRFN1-M with three high wall model MS11M-09HRFN1-MVOM

Free-Match

# Indoor Compact Flow Cassette



## Standard Features



Independent Dehumidification



Timer



Built-In Drain Pump



Sleep Mode



Slim Design



360° Air Flow Panel



Auto Defrosting



Auto Restart Function



Anti-Cold Air Function

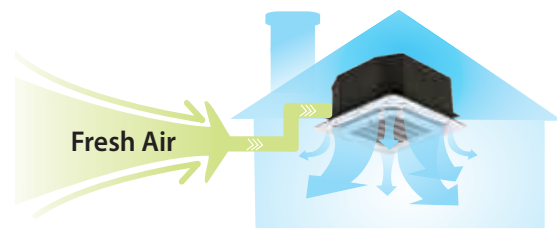
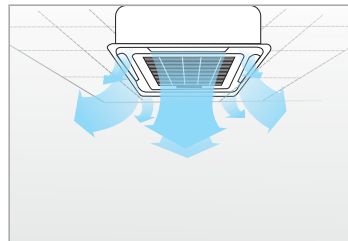
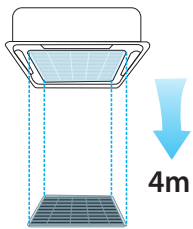


Wide-Angle Air Flow



## SPECIFICATION

Model No.	Indoor Unit* Panel* Outdoor Unit	MCA2U-12HRFN1-M T-MBQ4-03B4 MOZ-12HFN1-MS0W	MCA2U-18HRFN1-M T-MBQ4-03B4 MOF-18HFN1-MU0W	MCD-24HRFN1-M T-MBQ-02C1 MOG-24HFN1-MT0W	MCD-36HRFN1-M T-MBQ-02C1 MOU-36HFN1-M
<b>CAPACITY &amp; PERFORMANCE</b>					
Cooling Capacity	Btu/h	12000 (4800~14000)	18000 (6120~19260)	23800 (5400~27000)	36000 (9800~42000)
SEER	Btu/w	16.5	16.5	15.8	15
Heating Capacity	Btu/h	12400 (4550~15340)	18400 (4800~20800)	23800 (5400~27000)	36000 (9800~42000)
HSPF4	Btu/w	9.6	8.8	9.5	9
Indoor Noise Level (Hi/Mi/Lo)	dB(A)	51/46/40.5	51/46/40.5	52/47/43	52/47/44
<b>ELECTRICAL PARTS</b>					
Power Supply	V~,Hz,Ph	230,60,1	230,60,1	208-230,60,1	208-230,60,1
Minimum Circuit Ampacity	A	1.3	1.9	20	1.9
Max. Fuse	A	15	15	30	15
<b>DIMENSION &amp; WEIGHT</b>					
Net Dimension	mm	570x570x260	570x570x260	840x840x205	840x840x205
(WxDxH) - Body	inch	22.44x22.44x10.24	22.44x22.44x10.24	33.07x33.07x8.07	33.07x33.07x9.65
Packing Dimension	mm	655x655x290	655x655x290	900x900x225	900x900x265
(WxDxH) - Body	inch	25.79x25.79x11.42	25.79x25.79x11.42	35.43x35.43x8.86	35.43x35.43x10.43
Net Dimension	mm	647x647x50	647x647x50	950x950x55	950x950x55
(WxDxH) - Panel	inch	25.47x25.47x1.97	25.47x25.47x1.97	37.4x37.4x2.17	37.4x37.4x2.17
Packing Dimension	mm	715x715x123	715x715x123	1035x1035x90	1035x1035x90
(WxDxH) - Panel	inch	28.15x28.15x4.84	28.15x28.15x4.84	40.75x40.75x3.54	40.75x40.75x3.54
Net Weight - Body	kg/lbs	16/35.27	18/39.68	20.5/45.19	25/55.12
Net Weight - Panel	kg/lbs	2.5/5.51	2.5/5.51	5/11.02	5/11.02
Gross Weight - Body	kg/lbs	19/41.89	21/46.3	24/52.91	28.5/62.83
Gross Weight - Panel	kg/lbs	4.5/9.92	4.5/9.92	8/17.64	8/17.64
Piping Size (mm(inch))	Liquid	Ø6.35 (1/4")	Ø6.35 (1/4")	Ø9.52 (3/8")	Ø9.52 (3/8")
	Gas	Ø12.7 (1/2")	Ø12.7 (1/2")	Ø15.9 (5/8")	Ø15.9 (5/8")
	Drainage	ODØ25 (1")	ODØ25 (1")	ODØ32 (1 1/4")	ODØ32 (1 1/4")

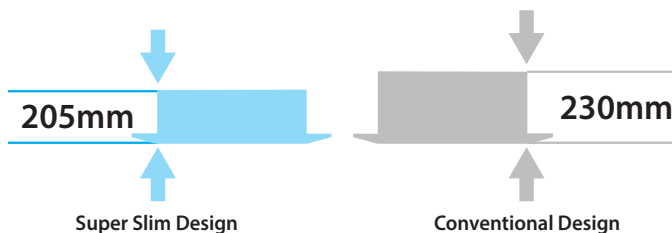


### Lifting Easy-Clean (Optional) & 360° Air Flow Panel

The removable lifting panel makes the clean process much easier. The 360° flow system distributes comfort to every corner of the room.

### Fresh Air Intake

Fresh air intake function gives you fresh and comfortable air feeling.



### E-box Inside

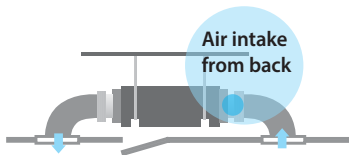
The E-box is simply and safely built inside the indoor unit. This integrated design provides a more compact body size and ease of installation. The maintenance of the E-box is simply by opening the air-return grille.

\* Both Indoor Unit & Panel, need to be ordered together.

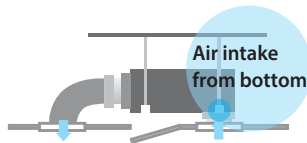
# Free-Match Duct



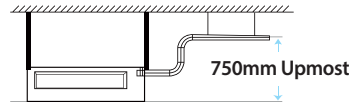
## Standard Features



Air intake from back



Air intake from bottom



750mm Upmost



Duct joint fresh air duct

### Fresh Air

Air inlet from back standard and from bottom optional. The size of the plate from bottom and flange from back is the same, it's easy for installer to change the air inlet from back to bottom.

### Built-in Drain Pump (Optional)

The drain pump can lift the condensing water up to 750mm upmost.

### Fresh Air

Fresh air hole as standard, it's easy to connect with air.



Canvas Air Passage

Front Board

Filter

Panel

### Optional Accessories

Optional accessories are available to meet the different needs of customers and enhance the performance.

## SPECIFICATION

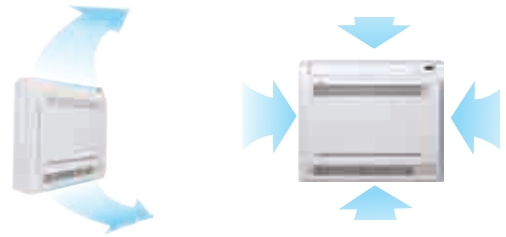
Model No.	Indoor Unit Outdoor Unit	MTBU-12HRDN1-M(B) MOZ-12HFN1-MSOW	MTBU-18HRDN1-M MOF-18HFN1-MU0W
<b>CAPACITY &amp; PERFORMANCE</b>			
Cooling Capacity	Btu/h	12000 (4770~13100)	18000 (7230~21700)
SEER	Btu/w	15.5	15.5
Heating Capacity	Btu/h	12200 (5150 ~15400)	18600 (8180~24530)
HSPF4	Btu/w	9.3	8.6
Air Flow Volume (Hi/Med/Lo)	CFM	370/325/270	510/380/310
Static Pressure (Hi)	Pa	40	70
Indoor Noise Level (Hi/Mi/Lo)	dB(A)	40/36/33	43/36/33
<b>ELECTRICAL PARTS</b>			
Power Supply	V~,Hz,Ph	230,60,1	230,60,1
Minimum Circuit Ampacity	A	1.3	1.9
Max. Fuse	A	15	15
<b>DIMENSION &amp; WEIGHT</b>			
Net Dimension	mm	700x635x210	920x635x210
(WxDxH)	inch	27.56x25x8.27	36.22x25x8.27
Packing Dimension	mm	915x655x290	1135x655x290
(WxDxH)	inch	36.02x25.79x11.42	44.68x25.79x11.42
Net Weight	kg/lbs	20/44.09	22.5/50.71
Gross Weight	kg/lbs	25/55.12	27.5/63.93
Piping Size (mm(inch))	Liquid	Ø6.35 (1/4")	Ø6.35 (1/4")
	Gas	Ø12.7 (1/2")	Ø12.7 (1/2")
	Drainage	ODØ25 (1")	ODØ25 (1")

# Free-Match Console

## Standard Features



SPECIFICATION			
Model No.	Indoor Unit Outdoor Unit	MFAU-12HRFN1-M / MFAU-12HRFN1-M(B) MOZ-12HFN1-MS0W	MUE-36HRFN1-M MOU-36HFN1-M
CAPACITY & PERFORMANCE			
Cooling Capacity	Btu/h	12000 (4770~13980)	36000
SEER	Btu/w	17.6	15
Heating Capacity	Btu/h	12000 (4770~16710)	36000
HSPF4	Btu/w	10	9.0
HSPF5		-	7.5
Indoor Noise Level (Hi/Mi/Lo)	dB(A)	41/32/29.5	55/48/41
ELECTRICAL PARTS			
Power Supply	V~,Hz,Ph	230,60,1	208~230-1-60
Minimum Circuit Ampacity	A	1.3	1.9
Max. Fuse	A	15	15
DIMENSION & WEIGHT			
Net Dimension	mm	700x210x600	1285x675x235
(WxDxH)	inch	27.56x28.27x23.6	50.59x26.57x9.25
Packing Dimension	mm	810x305x710	1360x755x313
(WxDxH)	inch	31.89x12.01x27.95	53.54x29.72x12.32
Net Weight	kg/lbs	15/33.07	30/66.14
Gross Weight	kg/lbs	20/44.09	35/77.16
Piping Size (mm(inch))	Liquid	6.35 (1/4")	9.52 (3/8")
	Gas	12.7 (1/2")	15.9 (5/8")
	Drainage	OD16 (5/8")	OD25 (1")

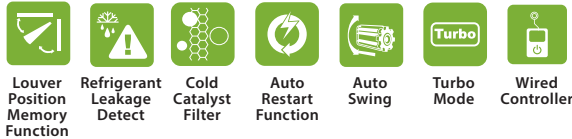


**2 Optional Air Outlet Ways**  
Both up and down air-outlet or up air-outlet only.

**4 Directions Air-Inlet**

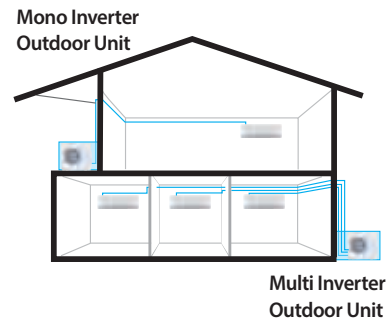
# Free-Match, Indoor Highwall Oasis ES Series

## Standard Features



SPECIFICATION					
Model No.	Indoor Unit	MS11M-09HRFN1-MX5W	MS11M-12HRFN1-MW0W	MS11M-18HRFN1-MU0W	MS11M-24HRDN1-MT0W*
CAPACITY & PERFORMANCE					
Cooling Capacity	°C / °F	17~32 / 62~90	17~32 / 62~90	17~32 / 62~90	17~32 / 62~90
Heating Capacity	°C / °F	0~30 / 32~86	0~30 / 32~86	0~30 / 32~86	0~30 / 32~86
Indoor air flow (Hi/Mi/Lo)	m3/h	750/650/450	750/650/450	1200/950/750	1450/1300/1050
Indoor air flow (Hi/Mi/Lo)	CFM	440/380/260	440/380/260	710/560/440	850/770/620
Indoor Noise Level (Hi/Mi/Lo)	dB(A)	42/37/34	43/37/31	47/40/31	50/45/40
ELECTRICAL PARTS					
Power Supply	V~,Hz,Ph	208-230,60,1	208-230,60,1	208-230,60,1	208-230,60,1
DIMENSION & WEIGHT					
Net Dimension	mm	835x198x280	835x198x280	990x218x315	1186 x 258 x 343
(WxDxH)	inch	32.87x7.80x11.02	32.87x7.80x11.02	38.98x8.58x12.40	46.69x10.16x13.39
Packing Dimension	mm	910x270x355	910x270x355	1065x300x400	1265/420/340
(WxDxH)	inch	35.83x10.63x13.98	35.83x10.63x13.98	41.93x11.81x15.75	49.80x16.53x13.39
Net Weight	kg/lbs	8.7/19.18	8.7/19.18	12/26.46	18.50/40.79
Gross Weight	kg/lbs	11.2/24.69	11.2/24.69	14/30.86	23/50.71
Piping Size (mm(inch))	Liquid	Ø6.35 (1/4")	Ø6.35 (1/4")	Ø6.35 (1/4")	Ø9.52 (3/8")
	Gas	Ø9.52 (3/8")	Ø9.52 (3/8")	Ø12.7 (1/2")	Ø15.9 (5/8")
Thermostat type		Remote Control	Remote Control	Remote Control	Remote Control

\*MS11M-24HRDN1-MTOW Compatible with the M50C-48HFN1-M Outdoor Condensing Unit only.



**Mono & Multi Compatible**  
Compatible indoor unit for both mono and multi inverter system. It comes in handy for warehouse management.

***KoolKing***™