

INSTRUCTIONS

MODEL J-99, J-100 INSTRUCTIONS

The J-Series Low Voltage Safety Switches are water level sensing devices and is designed to shut down the air conditioning or refrigeration unit in the event of a high water condition in the pan or reservoir.

The switch may be wired in a "normally open" or "normally closed" position.

INSTALLATION

1. Determine the circuit logic required. Either "normally open" or "normally closed". All switches are factory wired "normally closed". This configuration will open (break) an electrical circuit upon actuation of the switch. (High water condition)

2. If the factory wired logic is not desired, remove the screw and nut and open the switch case. Remove the switch and change the wire from the lower switch terminal to the center terminal as shown in Figure 1. The switch logic will now be "normally open".

FIG. 1

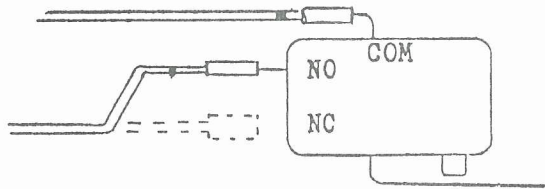
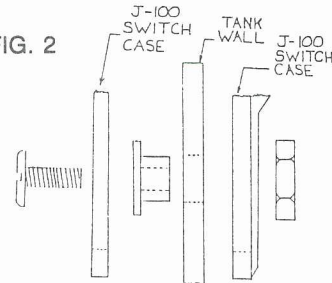


FIG. 2



Carefully replace the switch and close the case. Make sure to reassemble the case & hardware as in the sequence shown in Figure 2. Be sure the nut is placed in the channel provided.

3. If used with Hartell Pan-210 Kit, simply loosen the nut and sandwich the pan between the switch case flaps. Position the screw and rubber grommet in the slot provided in the pan. Hold it level and tighten the screw.

4. For all other applications, determine the fluid level desired for switch actuation. Drill a 9/32" diameter hole through the mounting surface (above the fluid level). Insert the rubber grommet through the hole first. Slide the switch case flaps over the tank wall, with the float on the fluid side of the tank wall (See Figure 3). Put the machine screw through the switch case and thread it through the rubber grommet. Assemble the nut onto the machine screw and tighten. The switch case can be mounted level or may be tilted up to 20 degrees. (See Figure 4).

FIG. 3

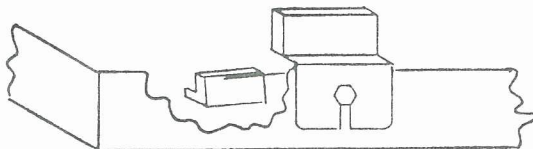
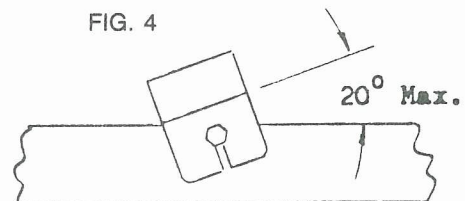


FIG. 4



5. Connect the electrical leads to the desired low voltage circuit (36 volts maximum ac or dc). Test the switch to assure proper operation and place the "NOTICE" label in a visible location on the control panel.



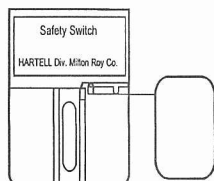


J Series low voltage safety switches are water sensing devices and are designed to shut down the air conditioning or refrigeration unit in the event of a high water level in the pan or reservoir.

The switch may be wired in a normally open or normally closed position. **All switches are factory wired normally closed.**

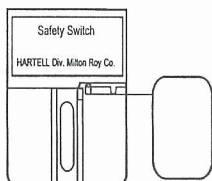
This safety switch kit comes complete with hook-up wire, hardware and installation instructions.

P/N 610066



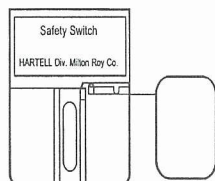
J-99 (6" leads)

P/N 610057



J-100 (72" leads)

P/N 610058



J-103 (w/alarm lead)