



PROVEN PRODUCTS FOR THE HVAC INDUSTRY

GENERAL OVERVIEW:

265V Subbase Receptacle Module includes a steel electrical box, standard NEMA electrical receptacle, mounting fasteners, conduit cord cover, and decorative cover plate.

- Receptacle outlets are all 2-pole/3-wire
- 18 ga steel enclosure
- Convenient knockouts for conduit connections
- UL Approved electrical components
- Decorative cover plate

PHYSICAL SPECIFICATIONS

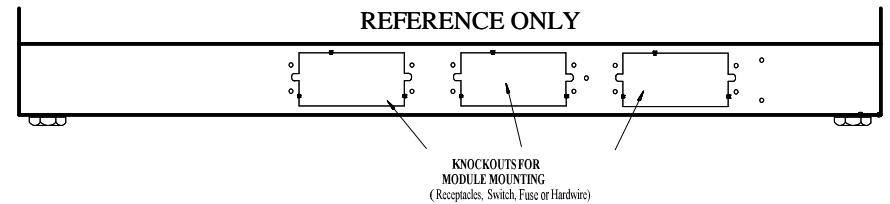
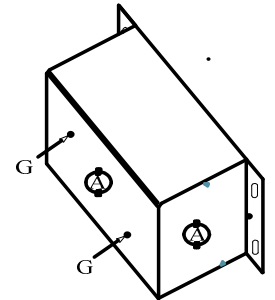
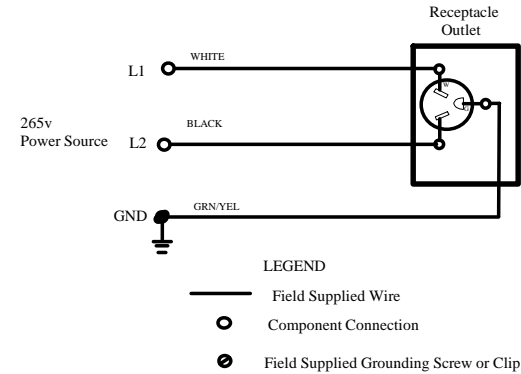
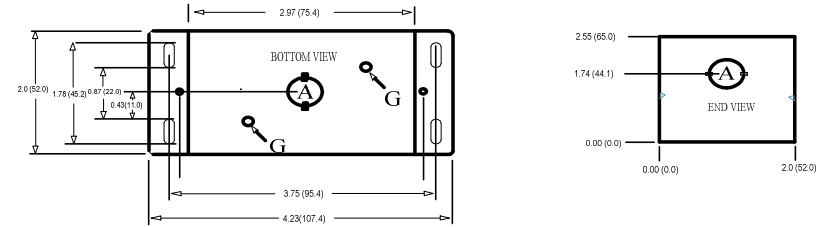
Material: Steel
 Finish: Black
 Knockouts (Sides): None
 1/2-in Knockouts (Bottom): 1
 1/2-in Knockouts (Ends): 2
 1/2-in Knockouts (Sides): None
 Ground Screw Holes: 2



REFERENCE ONLY

ELECTRICAL SPECIFICATIONS

Part Number	NEMA Configuration	Voltage (Max)	Rated Amperage	
PTAC-REC-265V15-A	NEMA 7-15R	277v	15A	
PTAC-REC-265V20-A	NEMA 7-20R	277v	20A	
PTAC-REC-265V15-A	NEMA 7-30R	277v	30A	



NOTES:

- 1) All dimensions Inch (mm)
- 2) "A" represents 1/2-inch knockout for electrical conduit connections
- 3) "G" represent electrical ground screw hole.

DRAWING RELEASE LEVEL:		First America Products, LLC	
THIRD ANGLE PROJECTION		UNLESS OTHERWISE SPECIFIED DIMENSIONS ARE IN MILLIMETERS TOLERANCES ON:	THIS DOCUMENT AND THE INFORMATION CONTAINED THEREIN IS PROPRIETARY TO FIRST AMERICA PRODUCTS, LLC AND SHALL NOT BE USED OR DISCLOSED TO OTHERS, IN WHOLE OR IN PART, WITHOUT THE WRITTEN AUTHORIZATION OF FIRST AMERICA PRODUCTS, LLC.
MATERIAL		0 DEC 1 DEC 2 DEC ANG	
WEIGHT:		ENGINEERING	TITLE
SURFACE FINISH		MANUFACTURING	DIMENSIONAL DRAWING
		DRAFTER	265V RECEPTACLE MODULES
		CHECKER	SIZE
		MODEL (INTERNAL USE ONLY)	DRAWING NUMBER
			REV
			SHEET 1 OF 1
			DISTRIBUTION

TITLE: **265V SUBBASE RECEPTACLE MODULES**