

Accessory Leveling Legs

For Use With
Packaged Terminal Air Conditioner
or Heat Pump

Installation Instructions

INTRODUCTION

These instructions cover the installation of the Accessory Leveling Legs. The Accessory Leveling Legs are constructed of sheet metal and are designed to offer accurate leveling and support for units without a subbase. Leveling legs are adjustable from 3 1/4 in. to 5 1/2 in. See Fig. 1.

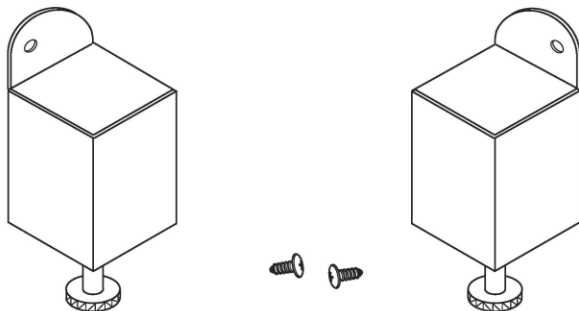


Fig. 1 — Accessory Leveling Legs

INSTALLATION

⚠ WARNING

Disconnect all power to unit to avoid possible electrical shock during installation.

Step 1 — Drill a 1/8 in. diameter hole on each side of wall sleeve. See Fig. 2 for mounting hole location (plastic wall sleeve will have a locator dimple).

Step 2 — Install leveling legs to wall sleeve using screws provided (do not over tighten).

NOTE: There is a right and a left leveling leg, be sure leveling legs are mounted so that the majority of the leg supports the sleeve (see Fig. 3).

Step 3 — Adjust leveling bolts to properly level and support sleeve (see Fig. 4).

Step 4 — Install PTAC (packaged terminal air conditioner) unit into wall sleeve.

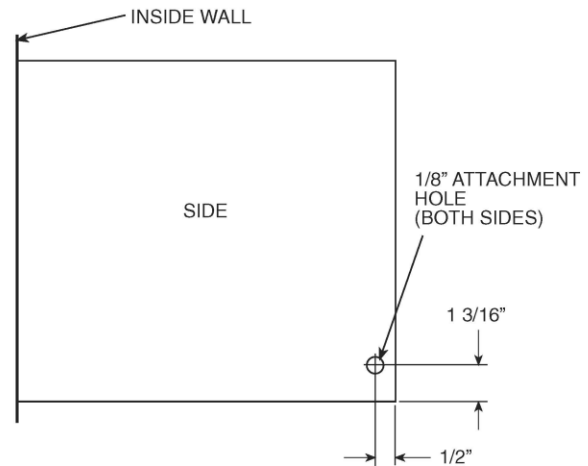


Fig. 2 — Wall Sleeve

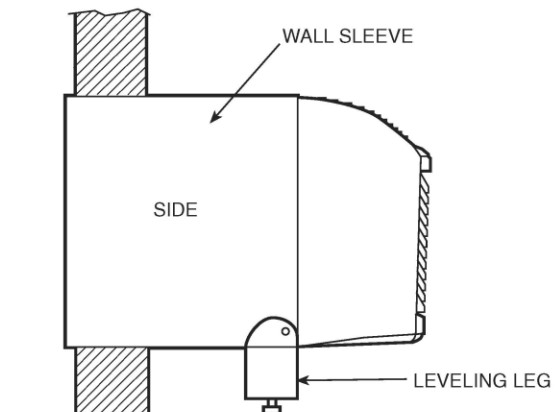


Fig. 3 — Leveling Leg (Side View)

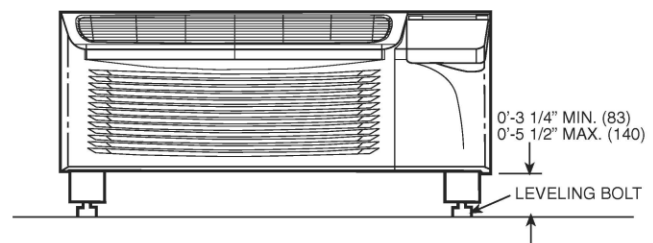


Fig. 4 — Leveling Legs (Front View)