

**SUBMITTAL RECORD**

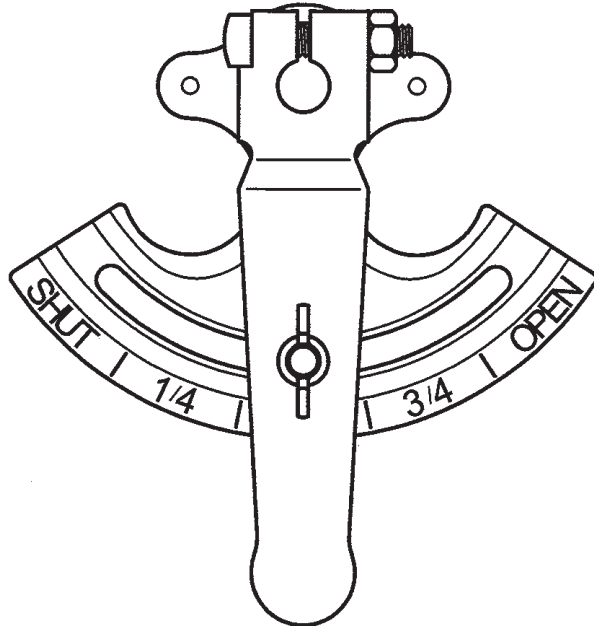
JOB \_\_\_\_\_  
 LOCATION \_\_\_\_\_  
 SUBMITTED TO \_\_\_\_\_  
 SUBMITTAL PREPARED BY \_\_\_\_\_  
 APPROVED BY \_\_\_\_\_  
 DATE \_\_\_\_\_



**Submittal Form  
 KL - Quadline  
 1/2" Shaft Loc  
 Quadrant Sets**

**1/2" SHAFT LOC QUADRANT SETS (FOR DAMPERS UP TO 30")**

"Shaft Loc" Quadrants are stamped of heavy gauge steel and clearly indicate the position of the damper. The quadrant handle (available for either 1/2" square or round shafts) is unique in that it locks the shaft of the damper to it by means of a powerful friction holding device strong enough to cut into the damper shaft eliminating damper rattle. The shaft is easily locked with a 1/2" open end wrench. Available for square or round ducts.



Stands Off Duct 1-3/16"



ROUND



SQUARE

| 1/2" SHAFT LOC QUADRANT SETS |       |                                |                |
|------------------------------|-------|--------------------------------|----------------|
| ITEM#                        | MODEL | SHAFT DESCRIPTION              | QUANTITY       |
| 8063                         | KL7   | 1/2" square Shaft loc quadrant | 100 Per Carton |
| 8064                         | KL7R  | 1/2" round Shaft loc quadrant  | 100 Per Carton |

Duro Dyne East Division, Bay Shore, NY  
 Duro Dyne Midwest Division, Fairfield, OH  
 Duro Dyne West Division, Fontana, CA  
 Duro Dyne Canada, Lachine, Quebec, Canada

631-249-9000 Fax: 631-249-8346  
 513-870-6000 Fax: 513-870-6005  
 562-926-1774 Fax: 562-926-5778  
 514-422-9760 Fax: 514-636-0328

www.durodyne.com E-mail: durodyne@durodyne.com



©2014 Duro Dyne Corporation  
 Printed in USA 5/14  
 BO008429