

**HURRICANE CLIP HC-1  
FOR USE IN ALL FLORIDA COUNTIES**

5523 WEST CYPRESS STREET  
SUITE 200  
TAMPA, FLORIDA 33607

CA: 8426

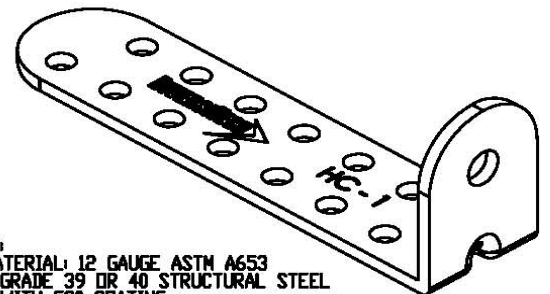
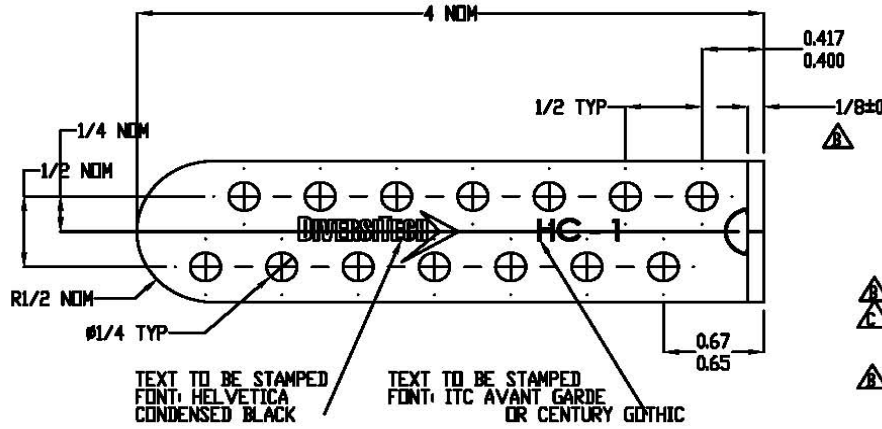
CLIENT: DIVERSITECH  
PROJECT: HURRICANE PAD CONNECTION CLIP  
CODES: FLORIDA BUILDING CODE 2010  
ASCE 7-10

DIVERSITECH HC-1 HURRICANE CLIP DETAIL DRAWING

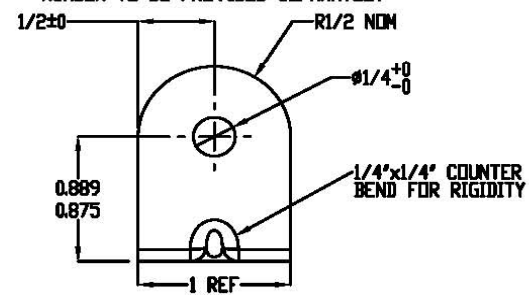
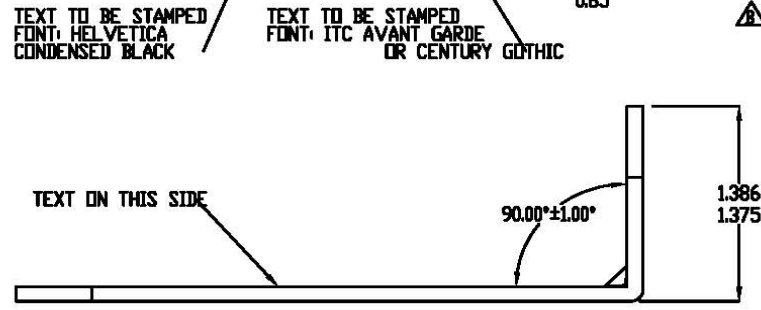
JAMES R. MEHLTRETTER, P.E.  
FL # 33860

May 8, 2014

| REVISIONS |      |  |           |          |
|-----------|------|--|-----------|----------|
| ZONE      | REV. | DESCRIPTION                                | DATE      | APPROVED |
| 3         | B    | CHANGED MATERIAL TO 12 GAUGE<br>SEE NOTE 4 | 8/31/2010 |          |
| 3         | C    | ADDED G90 COATING TO NOTE 1                | 9/27/2010 |          |



- NOTES:
- 1) MATERIAL: 12 GAUGE ASTM A653 GRADE 39 OR 40 STRUCTURAL STEEL WITH G90 COATING
  - 2) PARTS MUST BE FREE OF SHARP EDGES
  - 3) BURRS MUST BE LESS THAN 0.004"
  - 4) ART FOR DIVERSITECH LOGO AND PART NUMBER TO BE PROVIDED SEPARATELY



|  |     |   |          |
|--|-----|---|----------|
| UNLESS OTHERWISE SPECIFIED DIMENSIONS ARE IN INCHES DECIMALS |     | DIMENSIONAL TOLERANCES UNLESS OTHERWISE SPECIFIED |          |
| DRAWN  | JRT | DATE  | 08/31/10 |
| CHECKED  | DW  | DATE  | 08/31/10 |
| MATERIAL   |     | APPROVALS   |          |
| 12 GAUGE ASTM A653 GRADE 39 OR 40 STRUCTURAL STEEL           |     | DATE  |          |
| FINISH   |     | DRAWN   |          |
| WEIGHT   |     | CHECKED   |          |
| NEXT ASSY  |     | ELN   |          |
| USED ON  |     | SUPERCEDES  |          |
| APPLICATION  |     | VOLUME  |          |



|              |               |                |       |
|--------------|---------------|----------------|-------|
| TITLE:       |               | HURRICANE CLIP |       |
| DWG. NO.     | HC - 1        | REV            | C     |
| SCALE: 1:1   | UNITS: INCHES | PROJ. NO.:     | ***** |
| SHEET 1 OF 1 |               |                |       |

5 4 3 2 1