



**CFM**  
CONTINENTAL FAN

*better* AIRFLOW *by* DESIGN™

# *Residential Fans & Air Purifiers*



## AXC IN-LINE DUCT FANS

AXC In-Line Duct Fans are designed for residential, commercial and industrial ventilation applications. The quiet and efficient backward-curved impeller is capable of developing significant pressure, and the in-line configuration simplifies installation, saving time and money!



### Design Features

- Heavy gauge, drawn steel housing with baked epoxy finish
- 120V operation, other voltages available
- Easy to install - mounting brackets included
- May be mounted in any position
- Fans may be used to supply or exhaust air
- Suitable for air temperatures up to 140 F / 60 C
- Energy efficient - speed controllable (optional solid state speed control)
- Optional pre-wired with 120V power cord (AXC-C)
- Exceptionally quiet and efficient BC centrifugal motorized impeller
- External rotor motor design results in superior motor cooling and durability
- Permanently lubricated ball bearing motor for maintenance-free operation
- Automatic reset thermal overload protection
- Fan and motor are precision balanced for quiet and vibration-free operation
- Easily accessible, external junction box with pre-wired capacitor
- Available to fit duct sizes 4" - 14"; airflow capacities to 1,400 cfm



### FAN OPTIONS

#### Accessories

#### Controls

#### Grilles

MODEL	WATTS	RPM	AIRFLOW PERFORMANCE (CFM)									
			0" SP	0.2" SP	0.4" SP	0.6" SP	0.8" SP	1.0" SP	1.2" SP	1.5" SP	2.0" SP	3.0" SP
AXC100A-ES	43.3	2580	147	130	107	82	57	34	11			
AXC100B	83.4	2620	150	140	127	112	94	74	53	23		
AXC125A-ES	44.4	2520	179	150	121	87	49	14				
AXC125B	85.4	2750	183	160	141	122	101	77	51	14		
AXC150A-ES	46.8	2390	235	190	148	97	44					
AXC150B-ES	89.2	2450	308	260	216	175	139	108	81	47		
AXC200A-ES	84.5	2500	368	300	234	184	149	114	70			
AXC200B-ES	188	2550	579	520	453	387	329	282	245	206	154	
AXC250-ES	197	2470	616	550	488	431	379	330	286	227	143	
AXC300A-ES	206	2450	780	700	595	420	330	290	255	210	132	
AXC300B-ES	312	2780	970	910	803	680	559	453	367	273	164	
AXC355A	334	1360	1325	1150	960	790	660	550	430	238		
AXC355B	830	2900	1400	1370	1325	1250	1210	1135	1090	1000	880	675

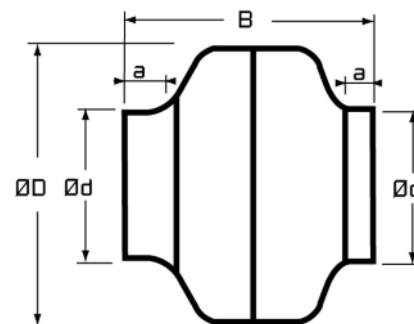
FOR PRE-WIRED WITH 120V POWER CORD, ADD -C TO MODEL.

MODEL	DIMENSIONS IN INCHES*					SHIP WT (LBS)
	D	d	a	B		
AXC100A-ES	9.5	3.9	1.0	8.3		7.5
AXC100B	9.5	3.9	1.0	8.3		8.0
AXC125A-ES	9.5	4.8	1.0	8.3		7.5
AXC125B	9.5	4.8	1.0	8.3		7.5
AXC150A-ES	9.5	5.8	1.0	8.3		7.5
AXC150B-ES	13.2	5.8	1.0	9.1		12.5
AXC200A-ES	13.2	7.8	1.0	9.1		12.0
AXC200B-ES	13.2	7.8	1.0	9.1		15.0
AXC250-ES	13.2	9.8	1.0	9.1		15.0
AXC300A-ES	15.9	11.8	1.2	11.8		18.0
AXC300B-ES	15.9	11.8	1.2	11.8		18.0
AXC355A	19.0	14.0	1.5	15.7		35.5
AXC355B	19.0	14.0	1.5	15.7		41.0

\*DO NOT USE FOR CONSTRUCTION  
CONSULT FACTORY FOR CERTIFIED PRINTS

AXC models 100A through 300B are cULus listed  
AXC models 355A and 355B are CSA listed to both US and Canadian standards

Products are HVI certified for airflow and power at 0.2" SP. HVI currently does not have a standard in place for testing the sound of a remote mounted fan. Many factors, such as ducting and fan location, can contribute to sound levels. Generally, a remote mounted fan should be quieter than a typical ceiling mounted fan.



## AXC BATHROOM VENTILATION KITS

AXC fans are available in a selection of easy-to-install bathroom ventilation kits with one or two exhaust points.

ROOM SIZE	FAN MODEL	AVAILABLE KITS
Up to 100 sq. ft.	AXC100A-ES	RG100-ES; AGK100-ES; RBFK100-ES
Up to 150 sq. ft.	AXC150A-ES	RG150A-ES; AGK150A-ES; DX150A-ES; DXAGK150A-ES
Over 150 sq. ft.	AXC200A-ES	DX200A-ES

**NOTE: DX KITS FEATURE TWO VENTS.**

### Adjustable Grille Bathroom Ventilation Kits

Attack moisture at its source. Vary airflow to suit your needs.

#### RG Kits Include:

AXC Fan, Mounting Brackets, GR Adjustable Grille/Collar (1), Gear Clamp (3)

- ☐ RG100-ES: 4" Fan, 147 cfm
- ☐ RG150A-ES: 6" Fan, 235 cfm



#### DX Kits Include:

AXC Fan, Mounting Brackets, GR Adjustable Grilles/Collar (2), Gear Clamp (7), Y-Fitting (1)

- ☐ DX150A-ES: 6" Fan, 235 cfm
- ☐ DX200A-ES: 8" Fan, 368 cfm



### AeroGrille Bathroom Ventilation Kits

The attractive, non-adjustable AeroGrille provides superior ventilation when combined with an AXC in-line duct fan.

#### AGK Kits Include:

AXC Fan, Mounting Brackets, AeroGrille/Collar/Damper (1), Gear Clamp (3)

- ☐ AGK100-ES: 4" Fan, 147 cfm
- ☐ AGK150A-ES: 6" Fan, 235 cfm



#### DXAGK Kit Includes:

AXC Fan, Mounting Brackets, AeroGrille/Collar/Damper (2), Gear Clamp (7), Y-Fitting (1)

- ☐ DXAGK150A-ES: 6" Fan, 235 cfm



### RBFK Retrofit Bath Fan Kit

Retrofit a noisy and inefficient bathroom fan with an RBFK Retrofit Bath Fan Kit. Kit includes all necessary hardware.

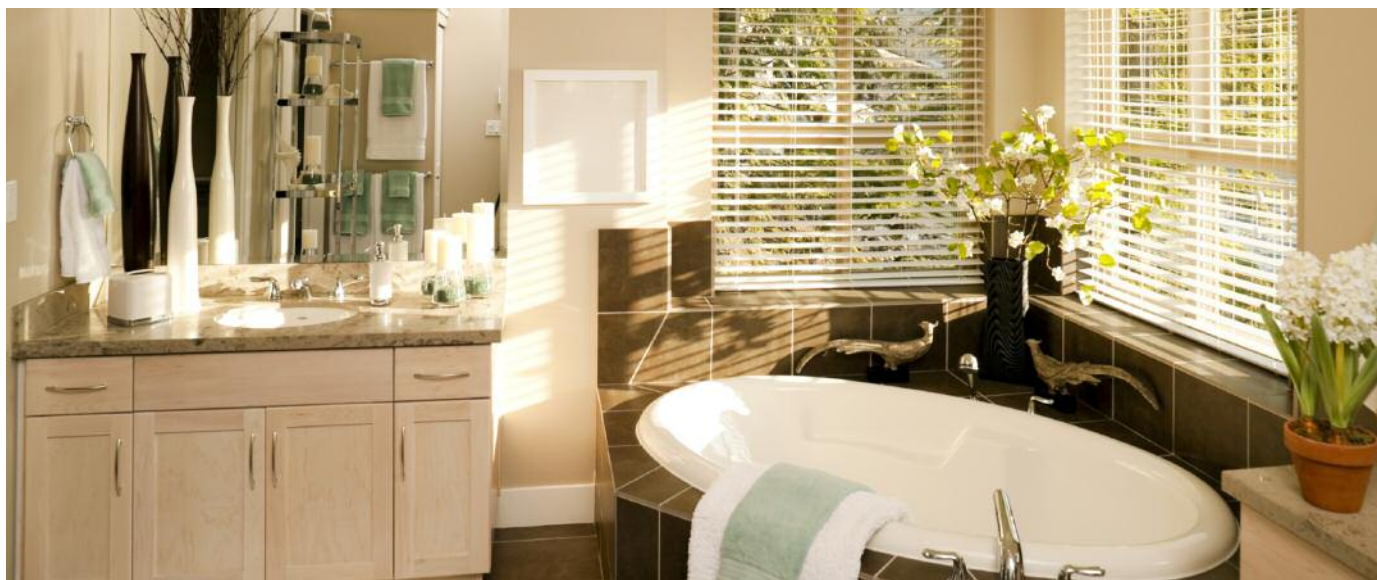
#### RBFK Kit Includes:

AXC Fan, Mounting Brackets, FL100 4" Flexible Insulated Duct (12.5'), 4"-3" Duct Reducer (2), No. 14 AWG Wire (12'), 3/8" Wire Cable Restraint, Wire Nut (3), #8 x 1-1/4" Wood Screw (4), #6 x 3/8" Pan Head Screw (6)

- ☐ RBFK100-ES: 4" Fan, 147 cfm







## How much airflow is required?

The following recommendations follow minimum guidelines published by the Home Ventilating Institute (HVI):

Bathroom less than 100 square feet:

- 1 cfm per square foot of floor area. A minimum of 50 cfm is the required ventilation rate.

Bathroom larger than 100 square feet:

- To calculate the proper ventilation rate, add the cfm requirement for each fixture; toilet 50 cfm, shower 50 cfm, bathtub 50 cfm, jetted tub 100 cfm.

Note: For proper sizing, the static pressure (SP) needs to be calculated. For typical applications, you may read from the 0.2" SP column for a selection.

## BATHROOM EXHAUST

### HOW WELL DOES YOUR BATHROOM EXHAUST FAN PERFORM?

As our homes continue to grow, so do our bathrooms. A lot of time and effort goes into renovating and creating the ideal bathroom. The bathroom has become a space of luxury and relaxation the entire family enjoys. We crave the tranquil spaces, equipped with everything from traditional tubs and showers, to steam baths, whirlpools, and saunas.

To ventilate these new spaces properly and to prevent mold and mildew buildup, multiple venting points and a powerful yet quiet exhaust system are required. Low quality, noisy, ceiling mounted bath fans are not capable of providing this. There is, however, a simple solution. Continental Fan's remote mount in-line duct fans provide the strong, quiet, and effective exhaust required to meet today's bathroom ventilation needs!

AXC, AXP, and MFT fans can be mounted in the attic. If space is limited, select an EXT external mount duct fan, which can be mounted to an exterior wall, or an MBI centrifugal in-line fan, which can be mounted between two studs.

If a traditional in-ceiling fan is your preference, then the high quality AeroFan is an ideal solution. The sleek design of the AeroFan is available in lighted or non-lighted versions.

## FAN OPTIONS & ACCESSORIES



**EXT**  
**External Mount Duct Fans**



**AXC**  
**In-Line Duct Fans**



**MBI**  
**Centrifugal In-Line Fans**



**AeroFan**  
**Bathroom Fans**



## ***How to size a Range Hood Exhaust Fan***

The following recommendations follow minimum guidelines published by the Home Ventilating Institute (HVI):

Wall Mounted Range Hood:

- 100 cfm per foot of hood width (36" range would require a minimum 300 cfm)

Island Style Range Hood:

- 150 cfm per foot of hood width (36" range would require a minimum 450 cfm)

Note: Local building codes, as well as any recommendations provided by the range and range hood manufacturers, should be consulted before making a fan selection.

## **RANGE HOOD EXHAUST**

### **HOW WELL DOES YOUR RESIDENTIAL RANGE HOOD EXHAUST PERFORM?**

Whether one is an active parent on the go, or a gourmet chef moonlighting at a day job, the kitchen is the heart of a home. The household congregates there for breakfast, reviews daily activities, and enjoys family dinners. All too often, kitchens can be marred by smoke and odors due to an inefficient range hood.

In-line duct fans are a simple solution for an inefficient residential range hood. In-line duct fans can be used as a principle exhaust fan or as a booster fan to improve the efficiency of an existing residential range hood. These fans may be speed controlled with an independent speed controller, or by tying into an existing range hood controller.

AXC in-line duct fans and EXT external mount duct fans are ideal for range hood exhaust.

### **WHAT IF A RANGEHOOD ISN'T AN OPTION?**

Not every home or remodel is suited for a rangehood to ventilate the kitchen. Homeowners can still evacuate the smoke and odor produced from cooking, with the same quiet and efficient exhaust fans used in rangehood ventilation. Continental Fan recommends using ceiling grilles combined with an AXC in-line duct fan or EXT external mount fan and a variable speed control. Ceiling grilles can be installed directly over the area you want to target, so when in use the fumes will not linger around the house.

## **FAN OPTIONS & ACCESSORIES**



**AXC  
In-Line Duct Fans**



**EXT  
External Mount Duct Fans**



**SA  
Sound Attenuator**



**BDD  
Backdraft Dampers**



## Helpful Tips

Use insulated duct in unheated spaces.

Control air volume with a variable speed control.

Sound levels in a duct fan installation decrease as the distance of the fan from the intake grille increases. Five feet is usually adequate.

Rigid duct tends to echo fan noise. To reduce sound levels, use flexible insulated duct.

One 4" fan will boost air up to 90 linear feet of duct.

Always consult local building codes prior to selecting product and materials.

## DUCT BOOSTING

### DOES YOUR HOME HAVE A ROOM THAT IS DIFFICULT TO HEAT OR COOL?

Many homes and office buildings have at least one area that presents a problem for heating or cooling. This is usually the result of additions or renovations being made without proper consideration for the heating / cooling systems.

In-line duct fans solve many air moving problems efficiently and quietly. They are designed to boost airflow through long or complex duct runs, resulting in better air comfort in the "problem" areas.

Combining a pressure switch with an additional thermostat located in the "problem" area provides additional control. This combination only provides air boosting when both the pressure switch is activated by the furnace fan and the temperature in the area rises or falls below a comfortable setting.

All of Continental Fan's in-line duct fans are ideal for duct boosting.

## FAN OPTIONS & ACCESSORIES



**AXC**  
In-Line Duct Fans



**EXT**  
External Mount Duct Fans

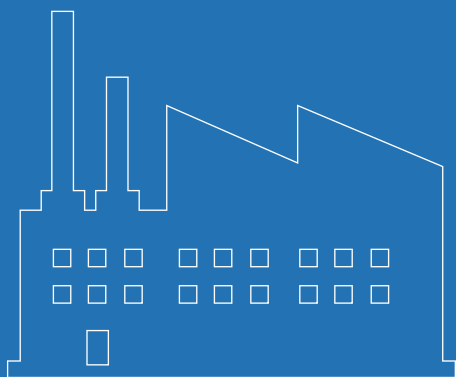


**MBI**  
Centrifugal In-Line Fans

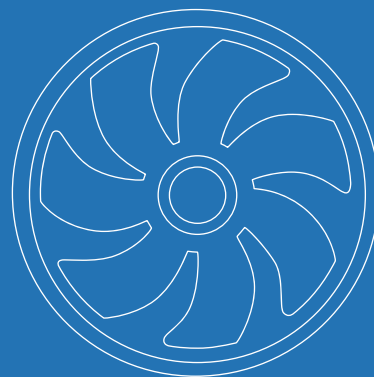


**MFT-S**  
Mixed Flow In-Line Fans





***Industrial Fans  
& Blowers***



***OEM Solutions  
& Custom Fans***



***Commercial Fans  
& Dampers***



***Residential Fans &  
Air Purifiers***



## Residential Fans & Air Purifiers

Continental Fan Manufacturing Inc.  
203 Eggert Road  
Buffalo, New York 14215

Continental Fan Canada Inc.  
12-205 Matheson Blvd. E  
Mississauga, Ontario L4Z 3E3

Continental Fan Manufacturing Inc.  
6274 Executive Blvd.  
Dayton, Ohio 45424

1-800-779-4021 • [www.continentalfan.com](http://www.continentalfan.com)

Distributed by:

Residential-CAT-1706