

EmPOWER MARYLAND



2021 Update



TOPICS

- *What's changing for 2021?*



- *BGE has a new process*
- *New Rebate Matrix from CEMA*



- *Tips and Best Practices for more success in 2021*



4 Utilities.....3 Different Programs

NO CHANGE IN PROCESS FOR 2021



1. Register with SMECO through SurveyMonkey site
2. Obtain specific login credentials
3. Submit Claim through SMECO website
4. CE Mid Atlantic approves claims at end of each month
5. Contractor gets paid for approved claims end of following month



1. No contractor registration required
2. Access CE Mid Atlantic Submission Site
3. Follow steps for claim submission
4. CE Mid Atlantic approves claims at end of each month
5. Contractor gets paid for approved claims end of following month

NO CHANGE IN PROCESS FOR 2021



1. Register with PE
2. Obtain specific login credentials
3. Submit Claim through PE website
4. CE Mid Atlantic approves claims at end of each month
5. Contractor gets paid for approved claims end of following month



An Exelon Company

Very Similar to 2020 SMECO Process

1. Register with BGE through site
2. Obtain specific login credentials
3. Submit Claim through BGE website
4. CE Mid Atlantic approves claims at end of each month
5. Contractor gets paid for approved claims end of following month

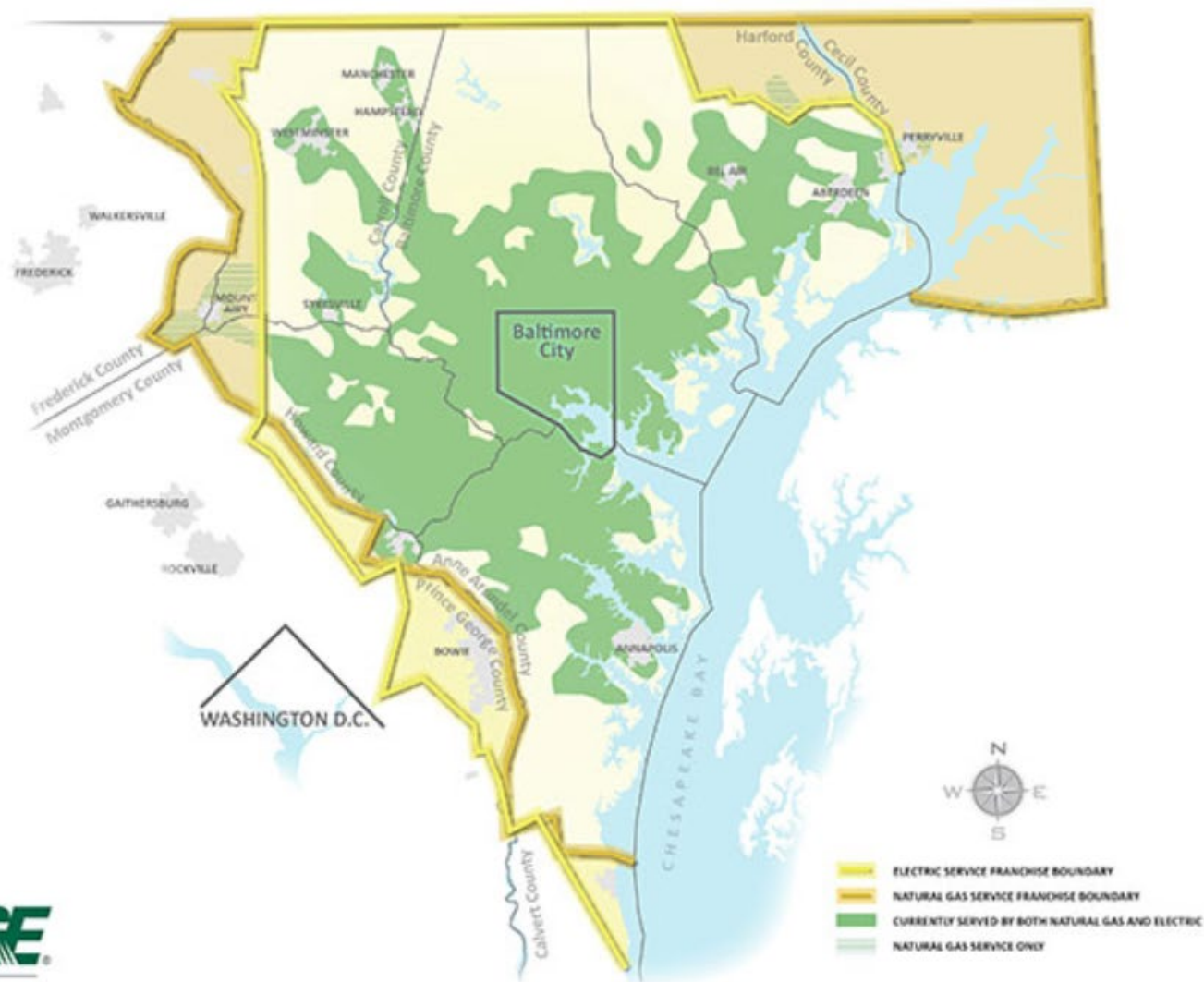
*Copy of h/o invoice doesn't need to be provided but if it is it needs to include line for BGE Residential HVAC Rebate

*If invoice isn't provided you may be audited by BGE

** Read the agreement you sign when you register*



BGE SERVICE AREA



*Program only includes residents in Maryland

Beginning Feb 1, 2021



An Exelon Company

BGE REBATE TIER LEVELS AND AMOUNTS FOR CE MID ATLANTIC

- Incentive amounts may vary by Distributor

Equipment Type	Efficiency Level	2021 Incentive
Air Source Heat Pump Tier 1	≥ 16 SEER, ≥ 12.5 EER, ≥ 9 HSPF	\$375
Air Source Heat Pump Tier 2	≥ 18 SEER, ≥ 12.5 EER, ≥ 9.5 HSPF	\$625
Central Air Conditioner Tier 1	≥ 16 SEER, ≥ 12.5 EER	\$275
Central Air Conditioner Tier 2	≥ 18 SEER, ≥ 12.5 EER	\$475
Ductless Mini Split Heat Pump	≥ 18 SEER, ≥ 12.5 EER ≥ 9 HSPF	\$225
Multi-Zone Ductless Mini Split HP	≥ 15.5 SEER ≥ 12.5 EER ≥ 8.6 HSPF	\$375
Geothermal Heat Pump	≥ 17.1 EER, ≥ 3.6 COP	\$1475
Smart Thermostat	ENERGY STAR® Certified	\$75



An Exelon Company

BGE REBATE End of the Year Instructions

If you sold the system in 2020 but don't plan on installing till Jan 2021, please use the 2021 rebates and procedures to claim in Jan 2021

If you sold a GAS FURNACE in BGE utility in 2020 but won't install till 2021, those claims must be submitted to CEMA by EOD Dec 29th .

Any claim not submitted by the 29th will not be paid



An Exelon Company

Stephanie Kneeland – Portfolio Manager, ICF

7125 Thomas Edison Dr, Suite 100

Columbia, MD 21046

Email: stephanie.kneeland@icf.com

Office: (443) 718-4852

Tiffany Roling – Program Manager, ICF

7125 Thomas Edison Dr, Suite 100

Columbia, MD 21046

Email: tiffany.roling@icf.com

Office: (215) 861-8587

Isabel Neto – Account Manager, ICF

9300 Lee Highway

Fairfax, VA 22031

Email: isabel.neto@icf.com

Office: (443) 573-0549

Carlos Rivas – Quality Assurance Manager, ICF

7125 Thomas Edison Drive, Suite 100

Columbia, MD 21046

Email: carlos.rivas@icf.com

Office: (667) 786-6323



Distributor Contact:

Mike Poirier

CE Mid Atlantic

Mike.Poirier@carrierenterprise.com

410-207-6594

Beginning Feb 1, 2021



SMECO REBATE TIER LEVELS AND AMOUNTS FOR CE MID ATLANTIC

- Incentive amounts may vary by Distributor

Equipment Type	Efficiency Level	2021 Incentive
Air Source Heat Pump Tier 1	≥ 16 SEER, ≥ 12.5 EER, ≥ 9 HSPF	\$375
Air Source Heat Pump Tier 2	≥ 18 SEER, ≥ 12.5 EER, ≥ 9.5 HSPF	\$625
Central Air Conditioner Tier 1	≥ 16 SEER, ≥ 12.5 EER	\$275
Central Air Conditioner Tier 2	≥ 18 SEER, ≥ 12.5 EER	\$475
Ductless Mini Split Heat Pump	≥ 18 SEER, ≥ 12.5 EER ≥ 9 HSPF	\$225
Multi-Zone Ductless Mini Split HP	≥ 15.5 SEER ≥ 12.5 EER ≥ 8.6 HSPF	\$375
Geothermal Heat Pump	≥ 17.1 EER, ≥ 3.6 COP	\$1475
Smart Thermostat	ENERGY STAR® Certified	\$75



SMECO Program Contacts:

Stephanie Kneeland

SMECO Residential HVAC Program Manager

Stephanie.Kneeland@icf.com

443-718-4852

Isabel Neto

SMECO Residential HVAC Account Manager

Isabel.Neto@icf.com

443-573-0549



Distributor Contact:

Mike Poirier

CE Mid Atlantic

Mike.Poirier@carrierenterprise.com

410-207-6594

PotomacEdison™

A FirstEnergy Company

Coverage Area for Potomac Edison



Potomac Edison MD territory includes the MD counties of Garrett, Allegany, Washington, Frederick, western part of Carol, the North-West of Montgomery and Howard touching Frederick County

Beginning Feb 1, 2021 REBATE TIER LEVELS AND AMOUNTS

<u>PROJECTED</u> Measure	Potomac Edison MD HVAC Incentives
Air Source Heat Pump -Tier 3 (≥ 16 SEER/ EER ≥ 12.5 / HSPF ≥ 9)	\$375.00
Air Source Heat Pump -Tier 4 (\geq SEER 18/ EER ≥ 12.5 / HSPF ≥ 9.5)	\$625.00
Central Air Conditioner -Tier 3 (\geq SEER 16/ EER ≥ 12.5)	\$275.00
Central Air Conditioner -Tier 4 (\geq SEER 18/ EER ≥ 12.5)	\$475.00
Ductless Mini-Split Heat Pump -Tier 2 (\geq SEER 18/ EER ≥ 12.5 / HSPF 9)	\$225.25
Multi Zone Ductless Mini-Split Heat Pump -Tier 2 (\geq SEER 15.5/ EER ≥ 12.5 / HSPF 8.6)	\$375.00
PTHP -CEE Tier 2-Multi Family	\$100.00
PTAC-CEE Tier 2 Multi Family	\$100.00
Heat Pump -Water & Geothermal -ES Tier 3	\$1,475.00
Smart Thermostat -Rebate	\$75.00



Residential Energy Efficiency Programs

Contact

Joyce Williams

Joyce.Williams@Honeywell.com

301-364-8436

Support Line - (888)267-4685



Distributor Contact:

Mike Poirier

CE Mid Atlantic

Mike.Poirier@carrierenterprise.com

410-207-6594



An Exelon Company



An Exelon Company

2 Companies
Same Rebate Matrix
Same Submission Process



An Exelon Company

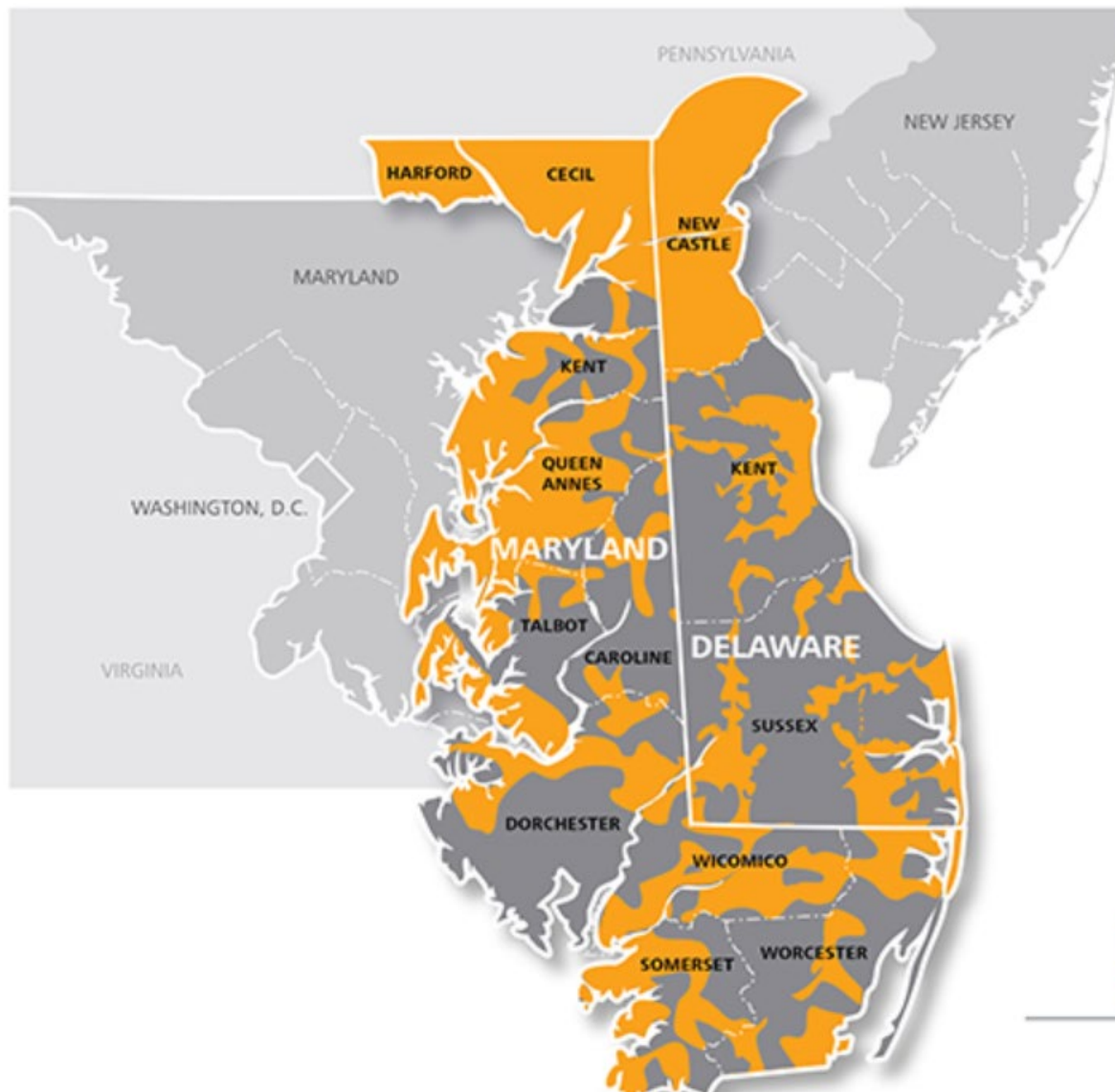


An Exelon Company

*Program only includes residents in Maryland



An Exelon Company



An Exelon Company

*Program only includes residents in Maryland



An Exelon Company



An Exelon Company

Program Product	\$ Rebate
DHP Multi Zone Unit ≥ 15.5 SEER and ≥ 12.5 EER and ≥ 8.6 HSPF	\$375
DHP Single Zone Unit ≥ 18 SEER and ≥ 12.5 EER and ≥ 9.0 HSPF	\$225
Central Air Conditioner ≥ 16 SEER and ≥ 12.5 EER Tier 1	\$275
Central Air Conditioner ≥ 18 SEER and ≥ 12.5 EER Tier 2	\$475
Air Source Heat Pump ≥ 16 SEER and ≥ 12.5 EER and ≥ 9.0 HSPF Tier 1	\$375
Air Source Heat Pump ≥ 18 SEER and ≥ 12.5 EER and > 9.5 HSPF Tier 2	\$625
ENERGY STAR® Certified Smart Thermostat (Pepco and Delmarva Power Only)	\$75
Geothermal Heat Pump (Closed Loop) 17.1 EER or greater, 3.6 COP or greater	\$1,475

Beginning Feb 1, 2021



An Exelon Company



An Exelon Company

Support Line – 443-948-6193



Distributor Contact:

Mike Poirier

CE Mid Atlantic

Mike.Poirier@carrierenterprise.com

410-207-6594

GETTING PAID FOR YOUR CLAIM



will gather all Empower MD claims at the end of each month

We will approve claims to the utility company at the beginning of the following month

The claims that we are paid for will appear as a credit on the contractors account no later than the end of the following month. If your claim is rejected by CE or the utility company, you will be notified. We are only paying out on claims we get paid for.

GETTING PAID FOR YOUR CLAIM



An Exelon Company





An Exelon Company



An Exelon Company

EXAMPLE

If you submit a claim on Oct 21st, it will be processed by  the first week of November and you will receive a credit on your account no later than Nov 30th

If you submit a claim on Feb 1, it will be processed by  the first week of March and you will receive a credit on your account no later than March 31st

CE Mid Atlantic Submission Page

THE BEGINNING LOCATION FOR YOUR
EMPOWER MARYLAND NEEDS

- MA.CarrierEnterprise.com
- Scroll to very bottom
- Under Resources
- Click UTILITY REBATE

Company	Resources	Support
About CE	All Categories	Accessibility
Our Team	CE News	Contact
Brands	CE Statements	
Careers	Credit Application	
Sustainability	Extended Warranty	
Store Finder	Dealer Resources	
What's New	Mobile Apps	
Carrier Enterprise	Hot Deals	
Sales Tax Disclosures	Utility Rebates	

CE Mid Stream Submission Site will include



An Exelon Company

- Link to Contractor Registration Site
- Link to Claim Submission Site
- Rebate Matrix



An Exelon Company



An Exelon Company

- Claims for PEPCO, and DELMARVA will be submitted on our site
- Instructions are included on page

EmPOWER MARYLAND



QUESTIONS



Mike Poirier

CE Mid Atlantic

Mike.Poirier@carrierenterprise.com

410-207-6594