



Comfort SERIES

15.0 SEER RESIDENTIAL SPLIT SYSTEMS

1.5, 2, 2.5, 3, 3.5, 4, 5 TONS



STANDARD FEATURES

- Puron (R-410A) HFC refrigerant
- Single circuit / single stage cooling capacity control
- Multi-tap ECM motor
- Sturdy non-corrosive polycarbonate condensate drain pan
- Pre-painted exterior panels and primer-coated interior panels tested to 500 hours salt spray protection
- Factory-installed Puron® refrigerant TXV
- Fully insulated cabinet - R-4.2 insulation with vapor barrier

MAINTENANCE FEATURES

- No tools required to service filter
- Central terminal board facilitating simple safety circuit troubleshooting and simplified control box arrangement

RELIABILITY FEATURES

- Scroll compressors with internal overload protection
- 24-volt control circuit / low voltage terminal strip
- Internal pressure-relief valve
- Internal thermal overloads
- Liquid line filter drier
- WeatherArmor™ protection package
- Dense wire coil guard

APPLICATIONS

- Long-line - up to 250 feet total equivalent length, up to 200 feet condenser above evaporator, or up to 80 feet evaporator above condenser (See Longline Guide for more information.)

STANDARD LIMITED PARTS WARRANTY

- 1 Year unit
- 5 Year compressor

TECHNICAL SUMMARY

SINGLE CIRCUIT SPLIT SYSTEMS							
	1.5	2.0	2.5	3.0	3.5	4.0	(208/1/60)
NOM TONS	1.5	2.0	2.5	3.0	3.5	4.0	5.0
SYSTEM SEER	16.5	16.5	16.5	16.5	15.0	15.0	15.0
SYSTEM SEER2	15.5	15.5	15.5	15.5	15.0	15.0	15.2
MODEL NO:	24SCA518-3	24SCA524-3	24SCA530-3	24SCA536-3	24SCA542-3	24SCA548-3	24SCA560-3
MODEL NO:	FJ4DNXA18	FJ4CNXB24	FJDNXB30	FJ4DNXB36	FJ4DNXC42	FJ4DNX48	FJ4DNXD60
CFM	600 @ .5"	800 @ .5"	1000 @ .5"	1200 @ .5"	1400 @ .5"	1600 @ .5"	2000 @ .5"
REFRIGERANT	R-410A	R-410A	R-410A	R-410A	R-410A	R-410A	R-410A
AMBIENT	95	95	95	95	95	95	95
CAP (MBH) @ 80/67 (TC/SC)	18.1 / 12.7	24.6 / 17.0	28.8 / 20.1	33.7 / 23.4	45.0 / 32.1	48.2 / 33.6	58.4 / 41.5
CAP (MBH) @ 75/62 (TC/SC)	16.5 / 12.9	22.5 / 16.8	26.3 / 19.8	30.8 / 23.1	40.9 / 31.8	43.6 / 33.1	53.0 / 41.4
CONDENSING UNIT DATA:							
COMPRESSOR QTY / STAGES	1 / 1	1 / 1	1 / 1	1 / 1	1 / 1	1 / 1	1 / 1
COMPRESSOR 1 RLA - LRA	8.8 - 42.6	9.3 - 49.7	11.7 - 71.3	12.2 - 80.1	25.0 - 120.0	25.0 - 120.0	25.6 - 150.0
COND. FAN FLA	0.40	0.60	0.60	1.4	1.5	1.5	1.4
MCA	11.4	12.2	15.2	16.7	32.8	32.8	33.4
MOCP	20	20	25	25	50	50	50
DIMENSIONS (LxWxH) (IN)	26 x 26 x 29	26 x 26 x 36	32 x 32 x 36	32 x 32 x 39	32 x 32 x 33	32 x 32 x 33	32 x 32 x 39
STD WEIGHT (LBS)	126	137	162	169	199	199	215
AIR HANDLER DATA:							
EVAP. FAN FLA - BHP	2.9 - 1/3	2.9 - 1/3	4.2 - 1/2	4.2 - 1/2	4.2 - 1/2	6.1 - 3/4	6.1 - 3/4
HEATER KW	3.8	3.8	6.0	6.0	6.0	7.5	7.5
MCA	26.3	26.0	44.7	44.7	44.7	53.8	53.8
MOCP	30	30	45	45	45	60	60
DIMENSIONS (LxWxH) (IN)	22 x 13 x 43	22 x 16 x 50	22 x 16 x 50	22 x 16 x 50	22 x 20 x 50	22 x 20 x 54	22 x 23 x 54
STD WEIGHT (LBS)	120	131	148	148	166	182	210
REF. TUBES O.D. (IN):							
SUCTION LINE	3/4	3/4	3/4	7/8	7/8	7/8	1-1/8
LIQUID LINE	3/8	3/8	3/8	3/8	3/8	3/8	3/8
WIND LOAD ENGINEERING							

RECOMMENDED SCHEDULE NOTES:

[Visit Carrier's REVIT® Library »](#)

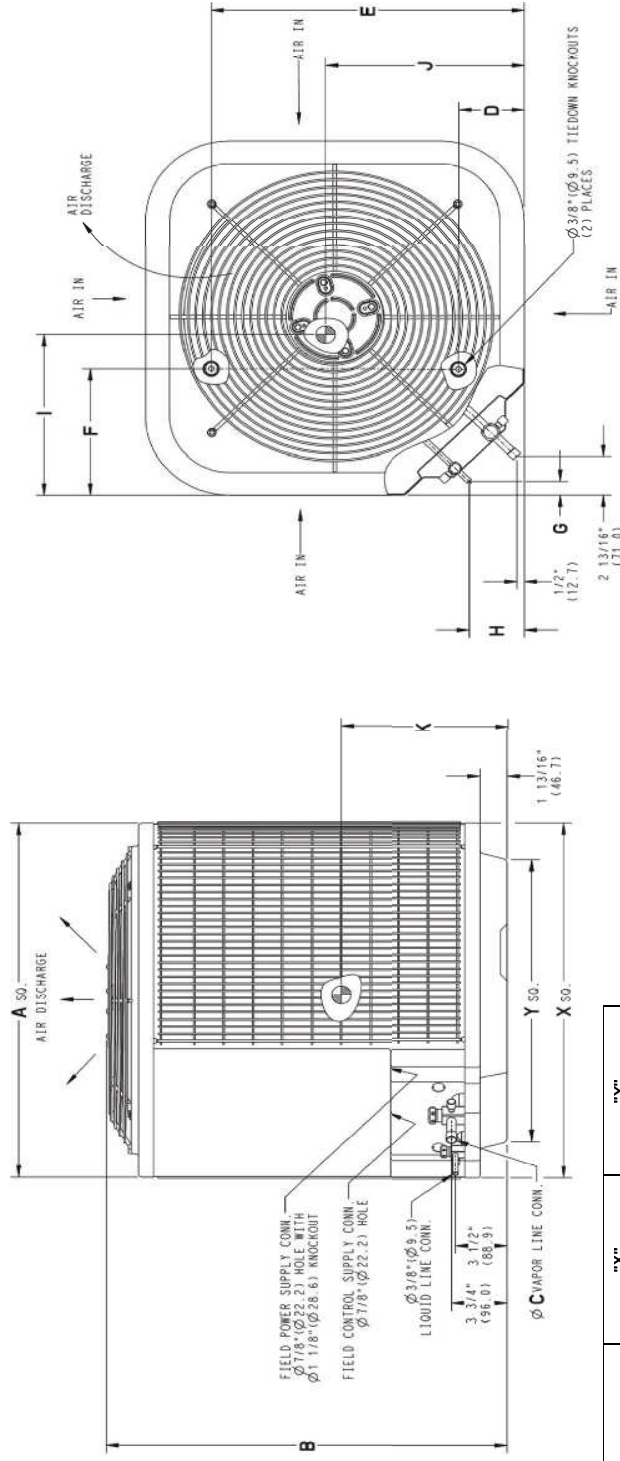
- A. REFRIGERANT LINE SIZES FOR TUBE SETS UP TO 50' LINEAR LENGTH
- B. UNITS SHALL CONFORM TO FLORIDA BUILDING CODE LATEST EDITION FOR HVHZ INSTALLATION.

DIMENSIONS

UNIT	SERIES	ELECTRICAL CHARACTERISTICS		A		B		C		D		E		F		G		H		I		J		K		OPERATING WEIGHT		SHIPPING WEIGHT		SHIPPING LENGTH / WIDTH (S.C.)		SHIPPING HEIGHT								
		MM	INCH	MM	INCH	MM	INCH	MM	INCH	MM	INCH	MM	INCH	MM	INCH	MM	INCH	MM	INCH	MM	INCH	MM	INCH	MM	INCH	MM	INCH	MM	INCH	MM	INCH	MM	INCH							
24SCA518WV0	0	N	25	3/4	654.0	28	11/16	728.7	3/4	19.1	4	7/16	113.0	21	1/4	538.9	9	1/8	231.3	3	76.2	12	1/2	317.5	14	1/2	368.3	11.3	51.3	126	57.2	28	3/4	730.0	33	15/16	882.1			
24SCA524WV0	0	N	25	3/4	654.0	35	1/2	901.4	3/4	19.1	4	7/16	113.0	21	1/4	538.9	9	1/8	231.3	3	76.2	12	1/2	304.8	14	3/5	457.2	123	55.8	137	62.1	28	3/4	730.0	40	3/4	1034.8			
24SCA530WV0	0	N	31	3/16	792.5	35	1/2	901.4	3/4	19.1	6	9/16	166.1	24	11/16	626.3	9	1/8	231.3	3	76.2	15	3/8	381.0	16	1/2	419.1	144	65.3	162	73.5	34	1/4	870.0	40	3/4	1034.3			
24SCA536WV0	0	N	31	3/16	792.5	38	7/8	987.8	7/8	22.2	6	9/16	166.1	24	11/16	626.3	9	1/8	231.3	3	76.2	15	3/8	381.0	18	1/2	469.9	151	68.5	169	76.7	34	1/4	870.0	44	1/8	1120.7			
24SCA542WV0	0	N	31	3/16	792.5	32	1/16	815.1	7/8	22.2	6	9/16	166.1	24	11/16	626.3	9	1/8	231.3	3	76.2	15	3/8	381.0	14	1/2	388.3	14	1/2	388.3	182	82.6	199	90.3	34	1/4	870.0	37	5/16	947.9
24SCA548WV0	0	N	31	3/16	792.5	32	1/16	815.1	7/8	22.2	6	9/16	166.1	24	11/16	626.3	9	1/8	231.3	3	76.2	15	3/8	381.0	14	1/2	388.3	14	1/2	388.3	182	82.6	199	90.3	34	1/4	870.0	37	5/16	947.9
24SCA560WV0	0	N	31	3/16	792.5	38	7/8	987.8	7/8	22.2	6	9/16	166.1	24	11/16	626.3	9	1/8	231.3	3	76.2	16	4/8	406.4	15	3/8	406.4	18	1/4	463.6	196	88.9	215	97.5	34	1/4	870.0	44	1/8	1120.7

208-230-1-60	YES
480-3-60	NO
208/230-2-60	NO
575-3-60	NO

NOTES:
1. CENTER OF GRAVITY



UNIT SIZE	"X" MINIMUM GROUND MOUNTING PAD APPLICATION DIMENSIONS		"Y" MINIMUM ROOF TOP MOUNTING PAD APPLICATION DIMENSIONS	
	MM	INCH	MM	INCH
23 1/8	587.3	23 1/8	17 7/8	454.8
18 3/4	654.0	20 7/16	518.5	
30.36-42.48-60	31 3/16	792.5	22 15/16	585.2
	35	889.0	26 3/4	679.7

NOTE: ALL DIMENSIONS IN INCH (MM) U.S. ECCN: Not Subject to Regulation (N.S.R.)

SD588E-4 (1) REV.A

DIMENSIONS

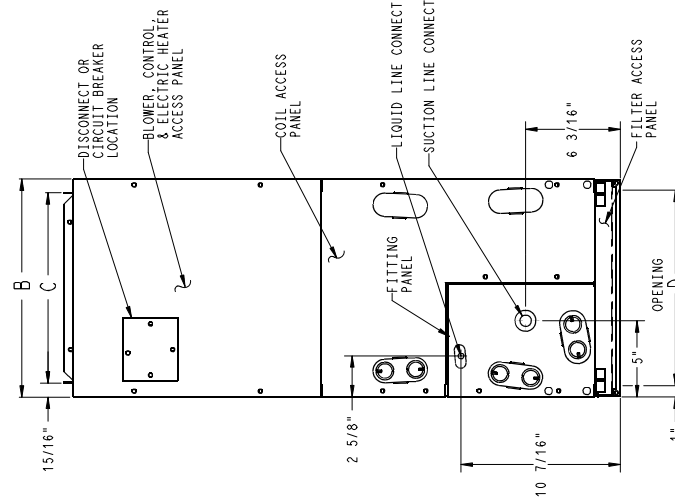
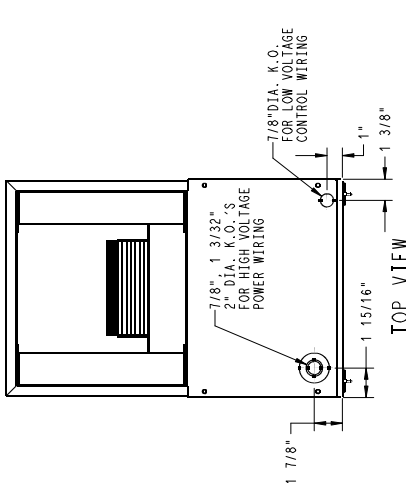
UNIT	SERIES	ELECTRICAL CHARACTERISTICS	A	B	C	D	E	F	G	H	J	COIL CONNECTION SLOPE "A"	SHIPPING WT (LBS)
FJ4DNXA18	A,B	X *	42 11/16"	14 5/16"	12 7/16"	12 5/16"	10 7/16"	18 1/8"	18 5/8"	-	12"	X	120
FJ4DNXB24	A,B	X *	49 5/8"	17 5/8"	15 3/4"	15 5/8"	15 3/8"	23 1/8"	23 5/8"	-	17"	X	131
FJ4DNXB30	A,B	X *	49 5/8"	17 5/8"	15 3/4"	15 5/8"	15 7/8"	23 1/8"	23 1/2"	-	-	X	148
FJ4DNXB36	A,B	X *	49 5/8"	17 5/8"	15 3/4"	15 5/8"	15 7/8"	23 1/8"	23 1/2"	-	-	X	148
FJ4DNXC42	A,B	X *	53 7/16"	21 1/8"	19 1/4"	19 1/8"	19 1/2"	27 1/4"	26 15/16"	28 5/16"	-	X	166
FJ4DNXC48	A	X *	53 7/16"	21 1/8"	19 1/4"	19 1/8"	19 1/2"	27 1/4"	26 15/16"	28 5/16"	-	X	166
FJ4DNXD60	A	X *	59 3/16"	24 11/16"	22 3/4"	22 11/16"	25 1/4"	32 15/16"	32 5/8"	34 1/16"	-	X	182
FJ4DNXD60	A	X *	59 3/16"	24 11/16"	22 3/4"	22 11/16"	25 1/4"	32 15/16"	32 5/8"	34 1/16"	-	X	210

X=YES
O=NO
*YES DUE TO AVAILABLE FIELD INSTALLED HEATERS.

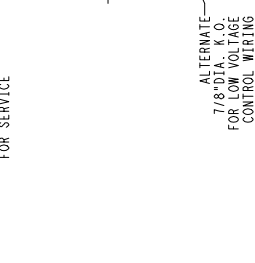
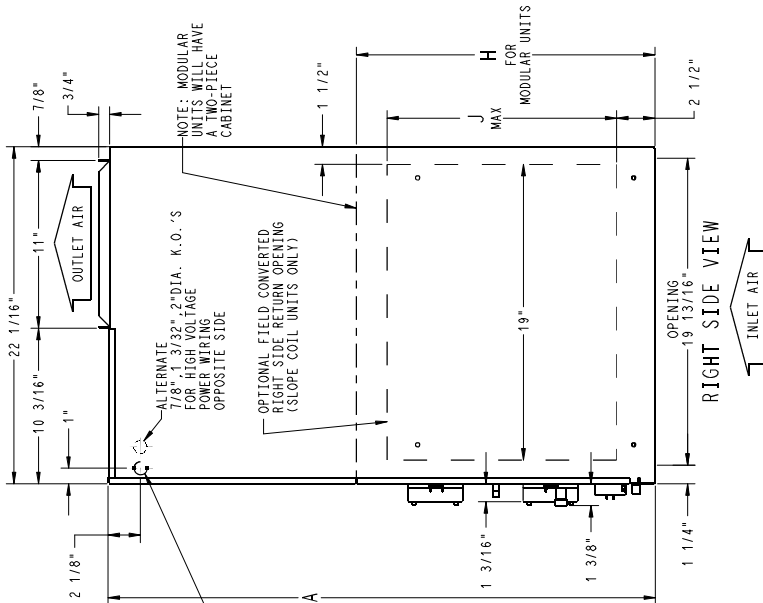
NOTE:

- SERIES DESIGNATION IS THE 14TH POSITION OF UNIT PRODUCT NUMBER
- ALL DIMENSIONS ARE IN "INCHES" UNLESS NOTED.

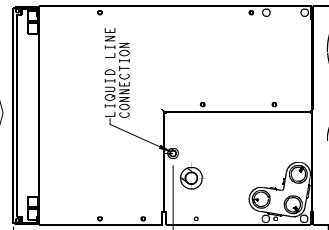
NOTE: ALLOW 21" FROM FRONT FOR SERVICE



SHOWN WITH "A" COIL DETAILS CONNECTION LOCATIONS FOR UPFLOW OR HORIZ. APPLICATIONS



SLOPE COIL DETAILS CONNECTION LOCATIONS SHOWN FOR UPFLOW OR HORIZ. LEFT APPLICATIONS



ACCESS PANEL CONEIG. FOR SLOPE COILS DOWNFLOW OR HORIZ. RIGHT APPLICATIONS AND \"A\" COILS DOWNFLOW APPLICATIONS

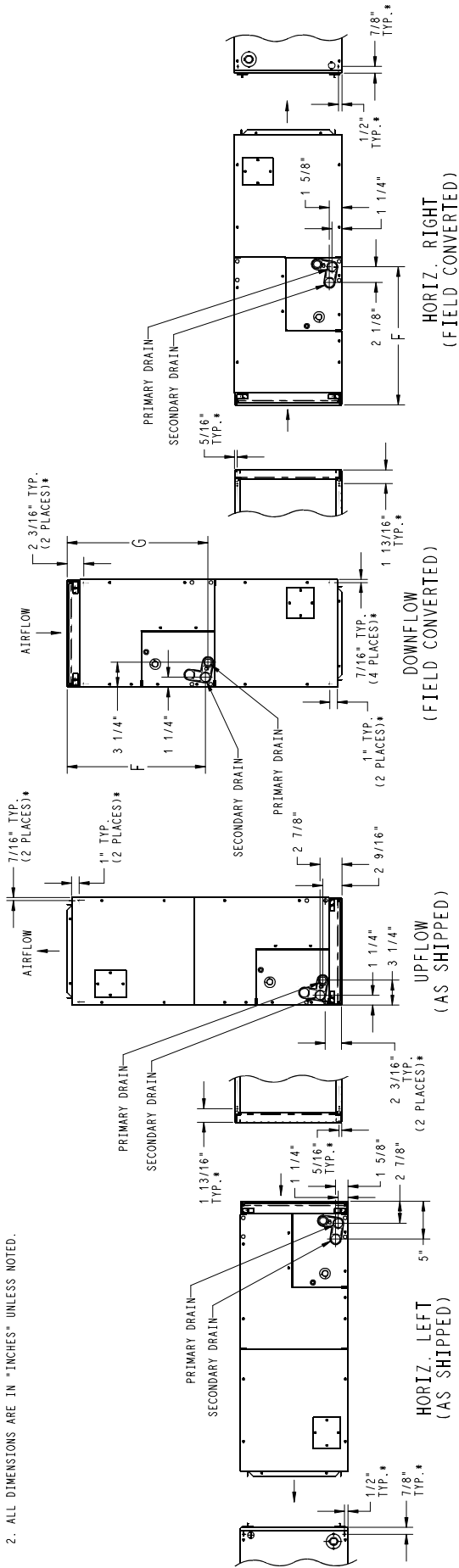
Fig. 1 - FJ4 - English (sheet 1)

DIMENSIONS (cont.)

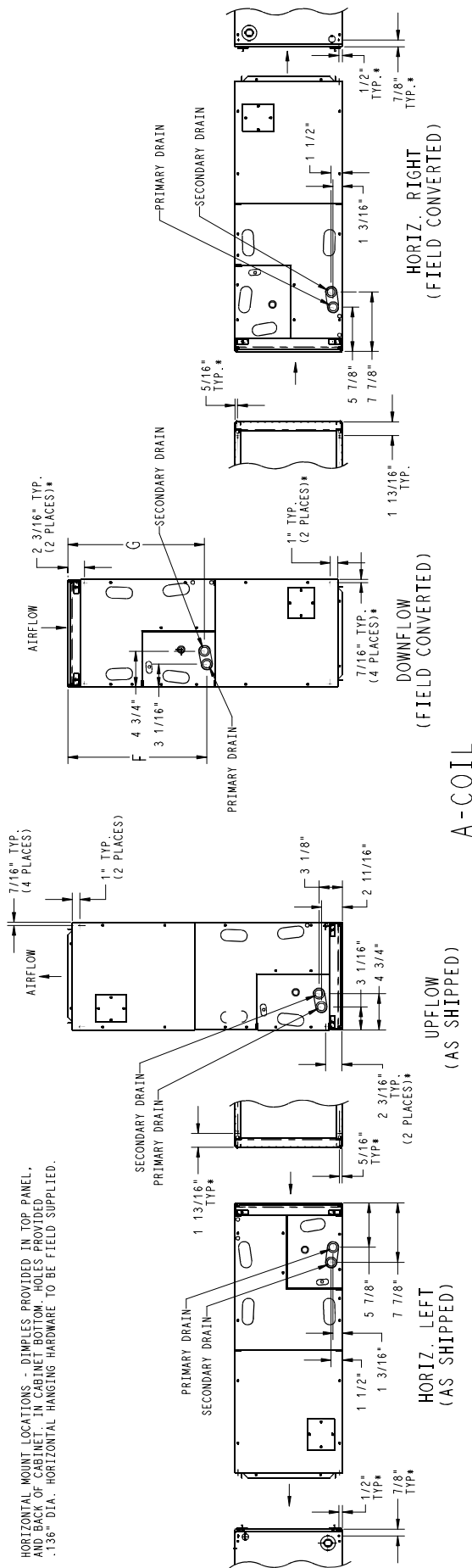
SLOPE COIL

NOTES:

1. CONDENSATE PAN DRAIN CAPS NOT SHOWN FOR CLARITY.
2. ALL DIMENSIONS ARE IN "INCHES" UNLESS NOTED.



* HORIZONTAL MOUNT LOCATIONS - DIMPLES PROVIDED IN TOP PANEL, AND BACK OF CABINET. IN CABINET BOTTOM, HOLES PROVIDED .136" DIA. HORIZONTAL HANGING HARDWARE TO BE FIELD SUPPLIED.



A-COIL

Fig. 2 - FJ4-English (sheet 2)

A22148A