

OPTIONS:
MATERIAL: 18ga. GALV STEEL
INSULATED PANELS (WHERE REQUIRED)
1" 1-1/2LB DUCT INSULATION (R VALUE 3.85)
GASKET PROVIDED WITH CURB
1 1/2" ADDED TO EXISTING CURB O.D.

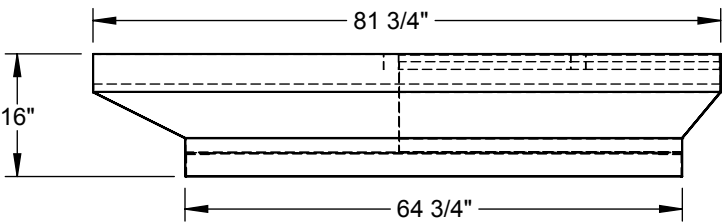
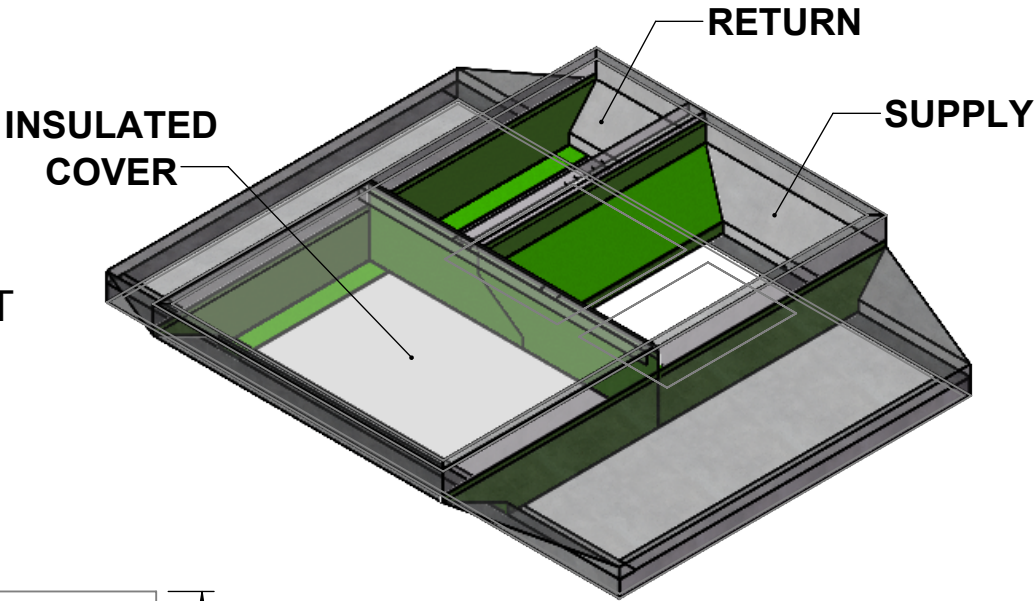
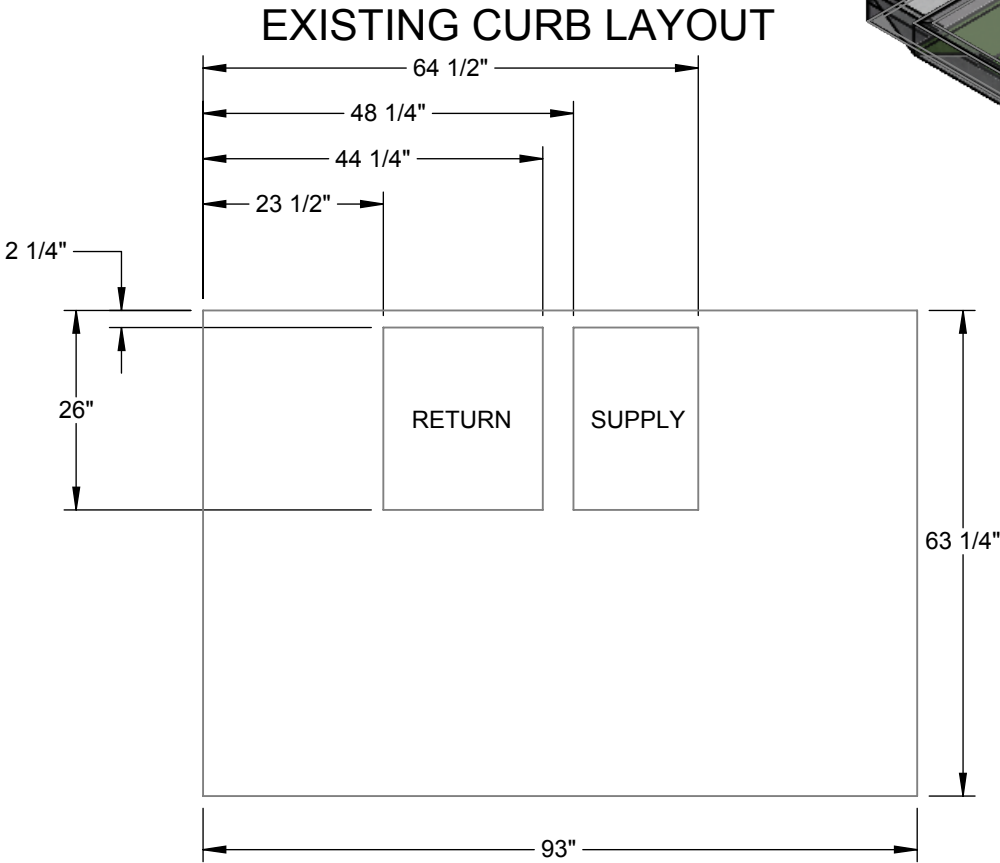
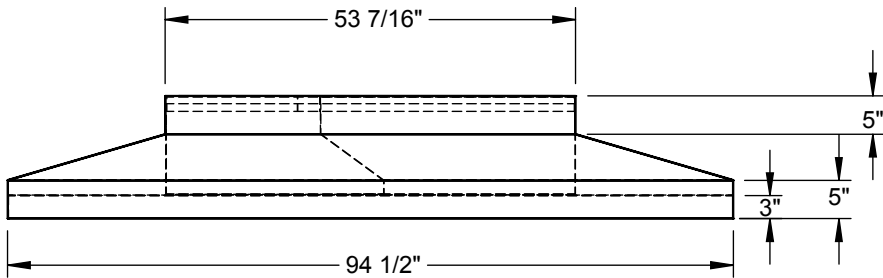
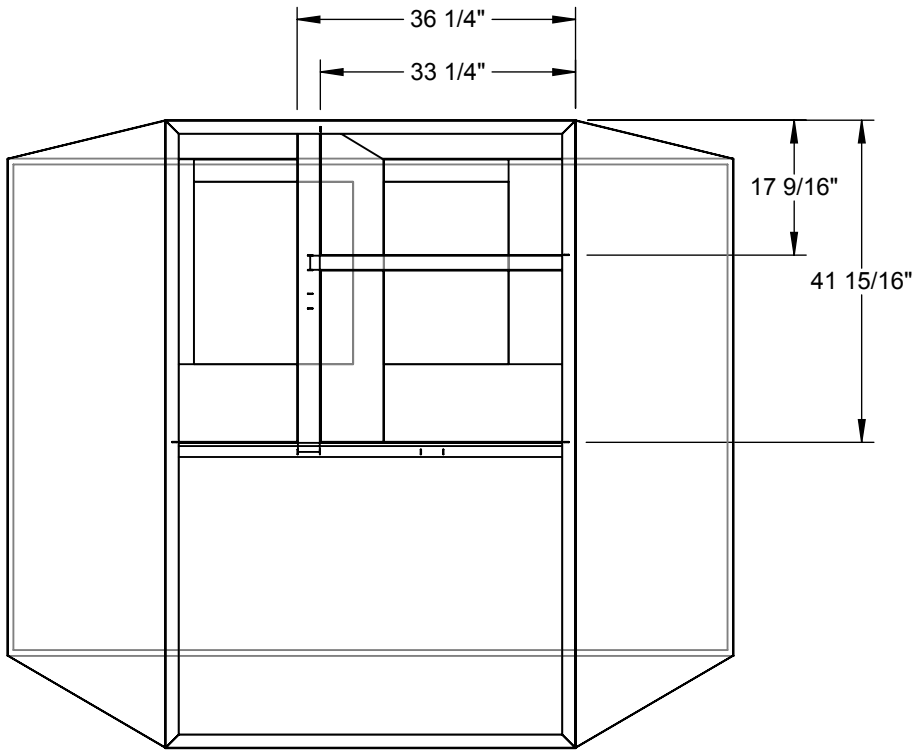
DIMENSIONED AND TOLERENCED PER ANSI Y14.5M-1982

Attn: _____

Tag: _____

Approval: _____

REVISIONS				
REV.	ECO#	DESCRIPTION	DATE	APPROVED
1		INITIAL DRAWING	4/15/2004	MWG
2		UPDATE NEW 3X3 DESIGN	3/15/2019	HMH



CURB SHOWN IS CDI STANDARD CONFIGURATION CDI RESERVES THE RIGHT TO CHANGE LAYOUT WITHOUT NOTIFICATION. IF CURB IS NEEDED IN A DIFFERENT CONFIGURATION CDI MUST BE NOTIFIED PRIOR TO PLACING AN ORDER.

OPERATIONAL HEIGHT OF CDI ADAPTER IS 3" LESS THAN OVERALL CURB HEIGHT SHOWN.

THIS DRAWING & THE INFORMATION CONTAINED THEREIN IS THE CONFIDENTIAL, PROPRIETARY INFORMATION OF CRYSTAL DISTRIBUTION INC., & MAY NOT BE USED OR REPRODUCED WITHOUT THE APPROVAL OF CRYSTAL DISTRIBUTION, INC. ALL RIGHTS RESERVED		APPROVALS		DATE	TITLE/FILE NAME: 1-5010-4005			
		DRAWN: hhorn		3/15/2019				
		CHECKED:						
		DIMENSIONS ARE AS FOLLOWS: 1.00 in [25.40 mm]						
*VERIFY EXISTING CURB OD *VERIFY SUPPLY AND RETURN OPENINGS *NOTE ANY CHANGES *CALL WITH ANY QUESTIONS *FAX BACK IF DRAWING IS OK AS IS		3RD ANGLE PROJECTION 	 Contact us @ www.cdicurbs.com or 1-888-234-7001		APPROXIMATE CURB WEIGHT (LBS.)		ECO #:	REV:
					135.53			1
					SCALE: 1:25		SHEET: 1	OF 10