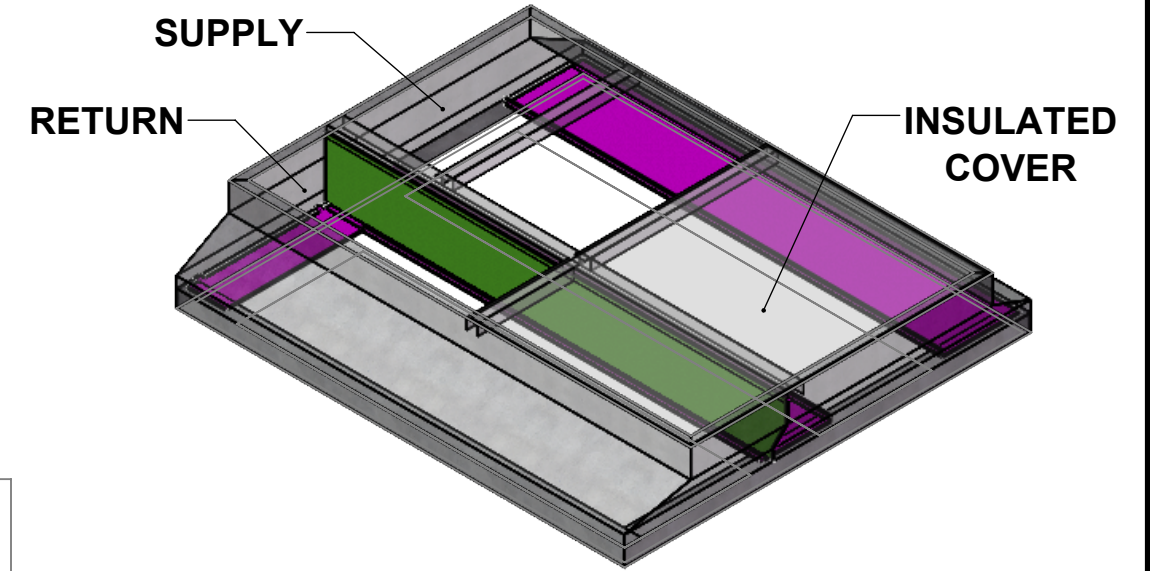
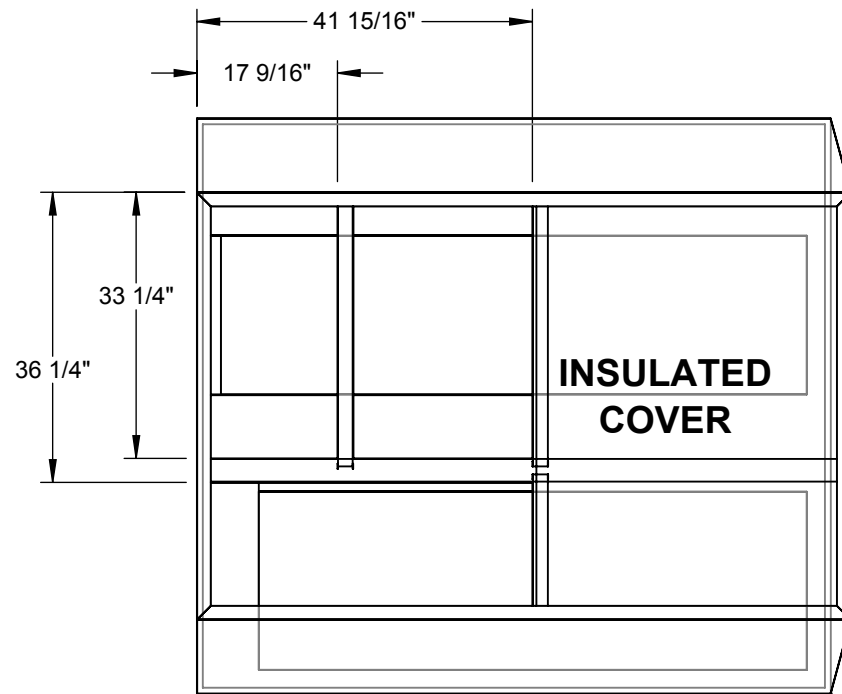


OPTIONS:
MATERIAL: 18ga. GALV STEEL
INSULATED PANELS (WHERE REQUIRED)
1" 1-1/2LB DUCT INSULATION (R VALUE 3.85)
GASKET PROVIDED WITH CURB
1 1/2" ADDED TO EXISTING CURB O.D.

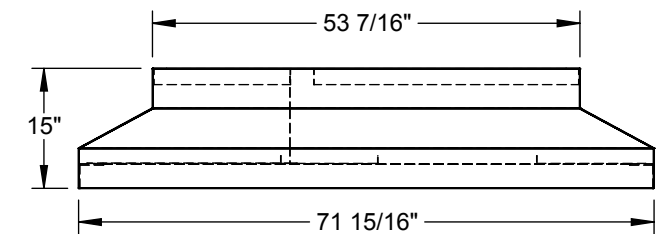
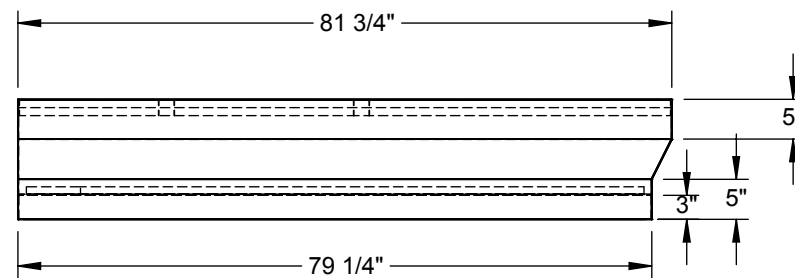
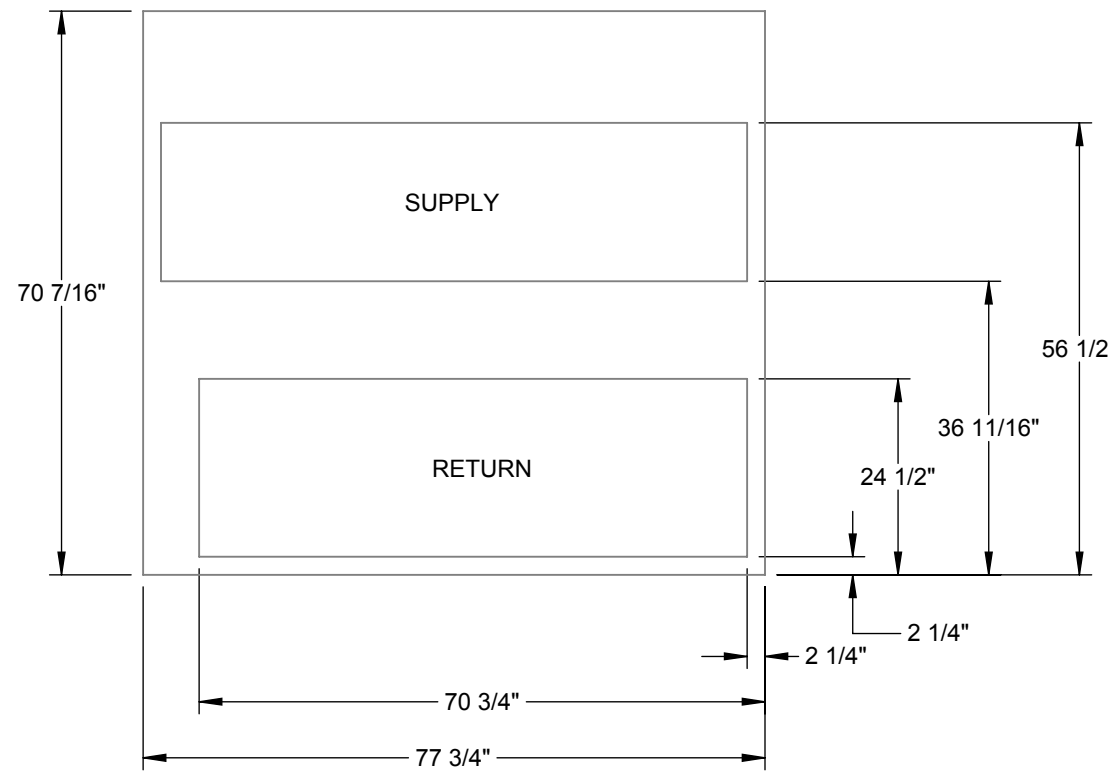
DIMENSIONED AND TOLERENCED PER ANSI Y14.5M-1982

REVISIONS				
REV.	ECO#	DESCRIPTION	DATE	APPROVED
1		INITIAL DRAWING	2/04/2005	MWG
2		CHANGED HT FROM 20 TO 15	5/21/2007	MWG
3		UPDATE TO NEW 3X3 DESIGN	3/18/2019	HMH

Attn: _____
 Tag: _____
 Approval: _____



EXISTING CURB LAYOUT



CURB SHOWN IS CDI STANDARD CONFIGURATION CDI RESERVES THE RIGHT TO CHANGE LAYOUT WITHOUT NOTIFICATION. IF CURB IS NEEDED IN A DIFFERENT CONFIGURATION CDI MUST BE NOTIFIED PRIOR TO PLACING AN ORDER.

OPERATIONAL HEIGHT OF CDI ADAPTER IS 3" LESS THAN OVERALL CURB HEIGHT SHOWN.

THIS DRAWING & THE INFORMATION CONTAINED THEREIN IS THE CONFIDENTIAL, PROPRIETARY INFORMATION OF CRYSTAL DISTRIBUTION INC., & MAY NOT BE USED OR REPRODUCED WITHOUT THE APPROVAL OF CRYSTAL DISTRIBUTION, INC. ALL RIGHTS RESERVED.	APPROVALS DRAWN: <u>hhorn</u> CHECKED: _____	DATE 3/18/2019	TITLE/FILE NAME: 1-4010-4005		
	DIMENSIONS ARE AS FOLLOWS: 1.00 in [25.40 mm]			APPROXIMATE CURB WEIGHT (LBS.) 101.19	ECO #: _____
	*VERIFY EXISTING CURB OD *VERIFY SUPPLY AND RETURN OPENINGS *NOTE ANY CHANGES *CALL WITH ANY QUESTIONS *FAX BACK IF DRAWING IS OK AS IS		Contact us @ www.cdicurbs.com or 1-888-234-7001	SCALE: 1:24	REV: 1 SHEET: 1 OF 8