



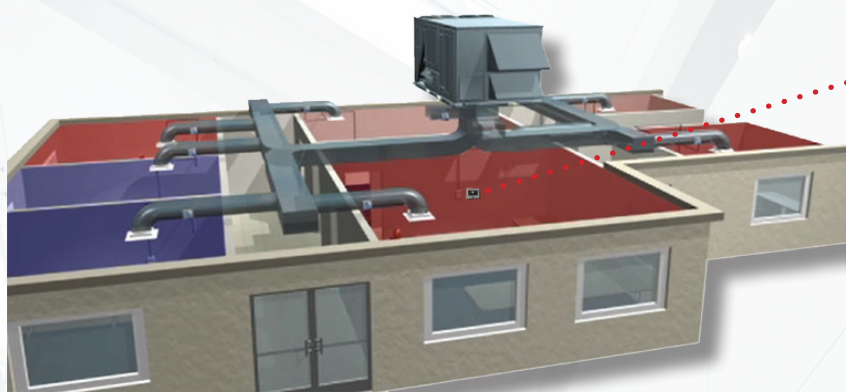
i-Vu[®] Building Automation System i-Vu[®] System Touch

Part Number: SYST1-4-CAR



The i-Vu[®] Building Automation System provides everything you need to access, manage, and control your building, including the powerful i-Vu user interface, plug-and-play BACnet[®] controllers, and state-of-the-art Carrier equipment.

Carrier's i-Vu System Touch is an integrated component of the i-Vu Building Automation System. It features an illuminated, 4.3" color pixel touchscreen display and connects directly to a network of Open (BACnet MS/TP), controllers. Designed for wall mounting, it provides building occupants, facility managers, and installers a powerful user interface for managing all of the equipment in a building.



Rooftop Status



Zone Status



System Status

Hardware Features

- Illuminated 4.3", 480 x 272 color pixel touchscreen display (no buttons)
- Built-in temperature and humidity sensing
- Supports remote thermistor sensor (such as Carrier T55)
- Connects directly to one Carrier Open (BACnet MS/TP) network and manages up to 60 Open controllers through a single touchscreen
- Intuitive icon-driven / website-like screen navigation
- Default system screens such as scheduling and trends support international languages
- Ideal for multi-zone commercial applications such as office buildings and retail stores

For Building Occupants

- View current space temperature
- View operating mode (heat/cool/economizer)
- Change setpoints easily
- Initiate timed local overrides

For Facility Managers

- Multi-level password protection for security
- Home screen shows temperatures and colors for all equipment in the building within a single view
- Convenient "Snapshot" screens show graphic and status for each piece of equipment in the building
- Manage schedules, trends, alarms, and configuration for all equipment in the system
- Configure individual and group schedules easily
- View, acknowledge, and delete system alarms from a single screen; audible indicator for all alarms

For Installers

- Simple 4-wire installation
- Auto-discovers all Open controllers on the BACnet MS/TP network
- Screen files can be auto-uploaded on select controllers¹, customized, or created from scratch
- Create customized screen files for navigating the entire system
- Startup wizard and integrated help screens to assist with equipment start-up & commissioning

¹For a complete list of controllers that include i-Vu Touch files, visit www.HVACPartners.com.



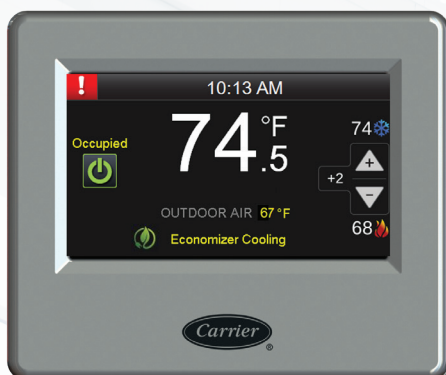
i-Vu[®] Building Automation System

i-Vu[®] System Touch

Part Number: SYST1-4-CAR

Specifications

Power	24 Vac (±15%), 5 VA, 50-60 Hz, Class 2		
Display	4.3 in. resistive touchscreen color LCD display with backlighting, 480x272 pixels		
Communication Ports	BACnet MS/TP: 2-wire EIA-485 port for connection to the Open controller network Sensor: for connecting an optional remote thermistor sensor (like Carrier T55) USB port: for firmware upgrades		
Real-time Clock	A 365-day real time clock/calendar. Time and date will be maintained for a minimum of 72 hours after loss of power (at room temperature).		
Audible Alarm Notification	A piezoelectric sounder		
Temperature Sensor	Range	-4°F to 140°F (-20°C to 60°C)	
	Accuracy over 30°F to 100°F (-1°C to 38°C):	±1.0°F (±0.55°C)	
	Accuracy over full range:	±2.0°F (±1.1°C)	
	Resolution:	0.2°F (0.1°C)	
Humidity Sensor	Range:	0 to 100% RH	
	Accuracy over 20 to 80% RH:	±3.0% RH	
	Accuracy over full range:	±5.0% RH	
	Resolution:	0.05% RH	
Environmental Operating Range	-4°F to 140°F (-20°C to 60°C), 10–90% RH, non-condensing		
Mounting	Mounting plate included for mounting to wall or electrical junction box		
Dimensions	Overall	Mounting Plate	Display Only
	Width: 5.44 in. (13.82 cm)	Width: 4.79 in. (12.2 cm)	Width: 3.75 in. (9.5 cm)
	Height: 4.55 in. (11.56 cm)	Height: 3.94 in. (10 cm)	Height: 2.25 in. (5.7 cm)
	Depth: 1.24 in. (3.15 cm)		
Weight	8 oz. (0.23 kg)		
Listed By	UL-916 (PAZX), CE, FCC Part 15-Subpart B-Class A		



Home Screen



Schedules Screen



Start-up Wizard



CONTROLS EXPERT

Tested. Certified. Factory Authorized.

For more information, contact
your local Carrier Controls Expert.
Controls Expert Locator:
www.carrier.com/controls-experts

© Carrier Corporation 2014 Cat. No. 11-808-362-01 Rev. 05/14
Manufacturer reserves the right to discontinue, or change at any time, specifications or designs, without notice and without incurring obligations. Trademarks are properties of their respective companies and are hereby acknowledged.