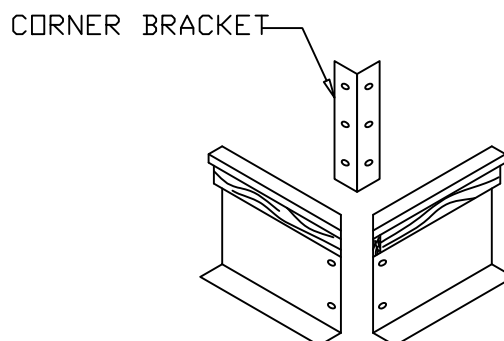
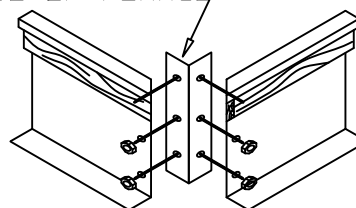


- 1 ARRANGE SIDES (3 & 4) TOGETHER TO MAKE ONE SIDE. BOLT TOGETHER USING BUTT STRAPS.

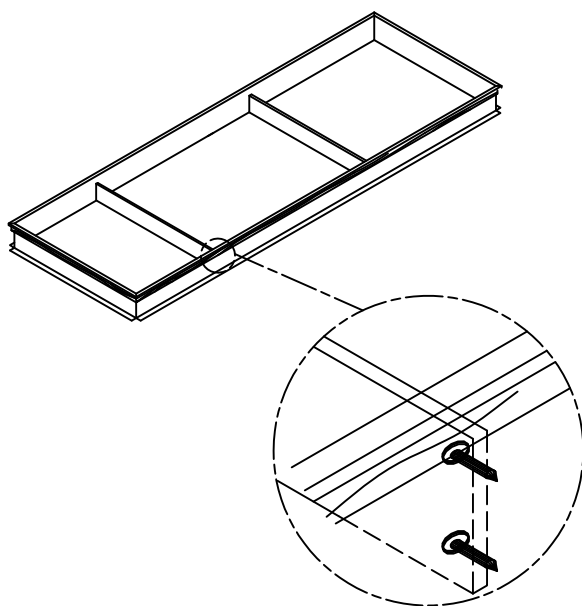


- 2 ARRANGE SIDES AND ENDS TOGETHER AT RIGHT ANGLES AS SHOWN.

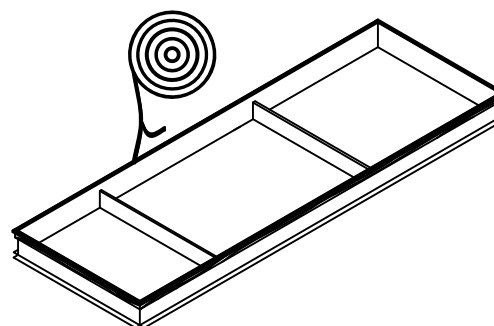
HEAD OF BOLT TO BE ON INSIDE OF FLANGE



- 3 BOLT SIDES AND ENDS TOGETHER AS SHOWN USING THE 4 CORNER BRACKETS, BOLTS, AND THE TEK SCREWS PROVIDED.



- 4 FASTEN CROSS SUPPORTS AS SHOWN USING THE 10-16x3/4" TEK SCREWS PROVIDED.



- 5 REMOVE PAPER BACKING FROM THE PROVIDED GASKETING AND APPLY TO TOP PERIMETER OF ROOF CURB. SET CURB IN PLACE OVER ROOF OPENING, LEVEL CURB AND SECURE TO ROOF.

IMPORTANT:

WHEN COIL CONNECTION HOUSING IS USED WITH BASE CURB, INSTALLING CONTRACTOR SHOULD ENSURE PROPER SEAL TO UNIT AT BOTH CONNECTION POINTS.

IMPORTANT:

THE GASKETING OF THE UNIT TO THE ROOF CURB IS CRITICAL FOR WATERTIGHTNESS. INSTALL GASKET SUPPLIED WITH ROOF CURB AS SHOWN IN STEP 5. IMPROPERLY APPLIED GASKET CAN RESULT IN AIR LEAKS AND POOR UNIT PERFORMANCE.