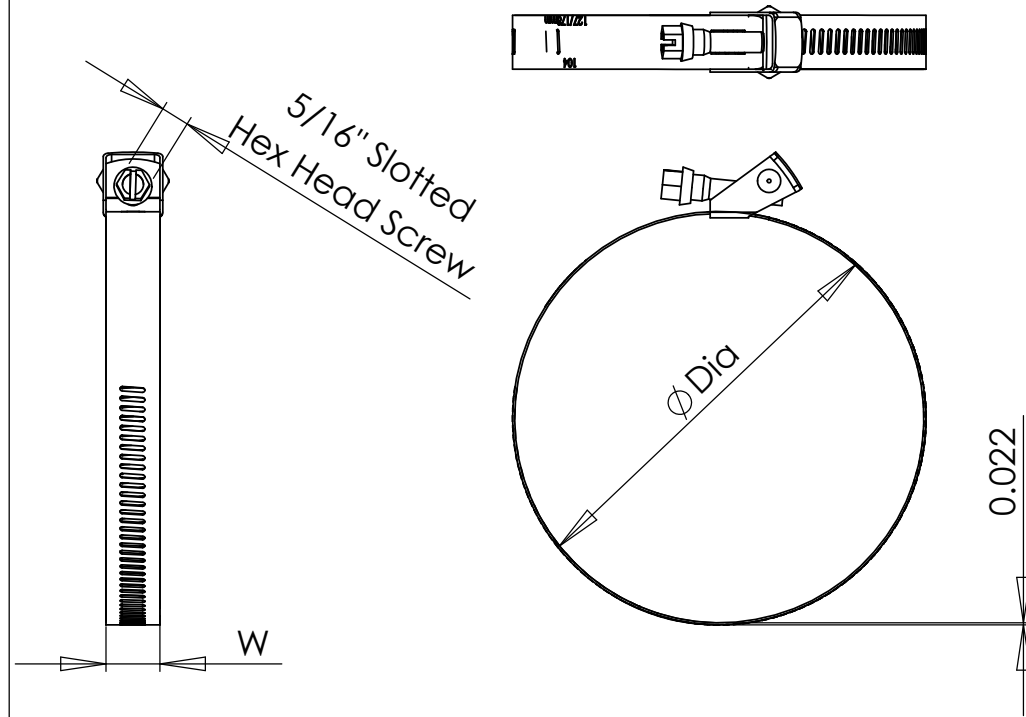


Rev.	Date	Notes
A	10-13-10	Initial Release
B	12-3-10	MAX DIA for 10" Duct size increase 1/2"



PART NO	DUCT SIZE STAMPING	MIN DIA	MAX DIA	W
380120	4"	1-3/4"	4-1/2"	1/2"
380122	6"	1-3/4"	6-1/2"	1/2"
380124	8"	1-3/4"	8-1/2"	1/2"
380126	10"	1-3/4"	11"	1/2"
380128	12"	1-3/4"	12-1/2"	1/2"



**PROPRIETARY AND CONFIDENTIAL**  
 THE INFORMATION CONTAINED IN THIS DRAWING IS THE SOLE PROPERTY OF CODA RESOURCES. ANY REPRODUCTION IN PART OR AS A WHOLE WITHOUT THE WRITTEN PERMISSION OF CODA RESOURCES IS PROHIBITED.

Notes:

1. RoHS Compliant - No Hexavalent Chromium - Cr(VI)
2. Material: Band and Housing - 200 Series Stainless Steel  
Screw - Zinc Plated
3. Durability Torque 60 in·lbs minimum
4. Size Stamping to be 3mm height minimum
5. Screw should turn freely by hand when disengaged
6. All surfaces to be clean and polished
7. Parts to be free of burrs and sharp edges

DRAWN	CHECKED	DATE
RH	RH	10-13-10
UNLESS OTHERWISE SPECIFIED:		
DIMENSIONS ARE IN INCHES [ ] DENOTES MILLIMETER TOLERANCES x.xx ± 0.02 [0.51] x.xxx ± 0.005 [0.13]		
MATERIAL See Notes		
FINISH Semi-Polished		
DO NOT SCALE DRAWING		

**CODA RESOURCES**  
 960 Alabama Ave, Brooklyn, NY 11207 P:718-649-1666 F:718-485-4403

TITLE:  
 Quick Release Duct Clamps

SIZE	DWG. NO.	REV
<b>A</b>	QR Duct Clamps Rev B	<b>B</b>

SCALE: 1:2 SHEET 1 OF 1