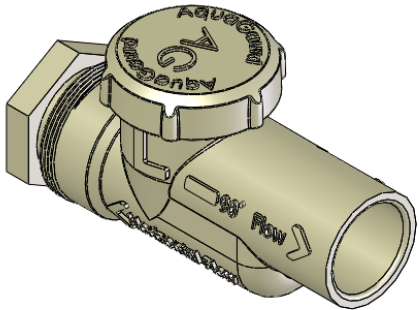
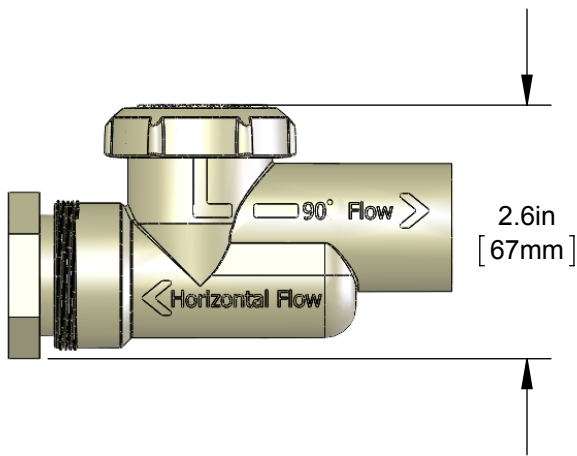
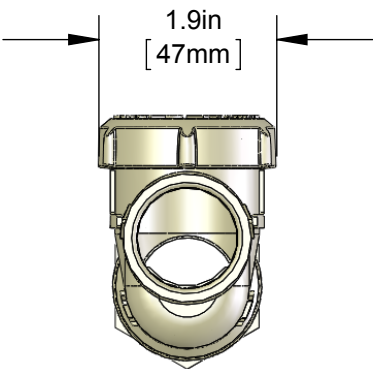
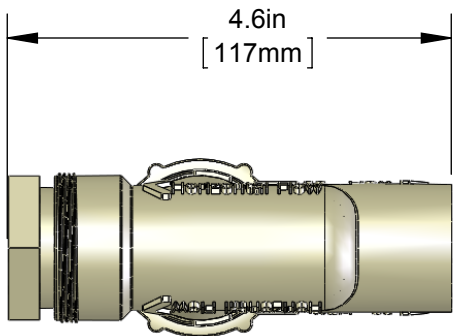


C



C

B



B

NOTES:
CAN BE INSTALLED VERTICALLY OR HORIZONTALLY.
INSULATED IN-LINE MAINTAINCE AND CLEAN OUT.

UNLESS OTHERWISE SPECIFIED:

DIMENSIONS ARE IN INCHES
TOLERANCES:
FRACTIONAL $\pm .032$
ANGULAR: MACH $\pm .5^\circ$ BEND $\pm 2^\circ$
TWO PLACE DECIMAL $\pm .010$
THREE PLACE DECIMAL $\pm .005$

INTERPRET GEOMETRIC
TOLERANCING PER: ANSI Y14.5, 1994

ENGINEERING	NAME	DATE
DRAWN BY ENG.	JK	7/29/09
CHECKED BY ENG.	DS	7/29/09
ENG APPR.	CC	7/29/09
MFG APPR.	CC	7/29/09

PROPRIETARY AND CONFIDENTIAL

THE INFORMATION CONTAINED IN THIS
DRAWING IS THE SOLE PROPERTY OF
RESOURCE CONSERVATION
TECHNOLOGIES, INC. ANY
REPRODUCTION IN PART OR AS A
WHOLE WITHOUT THE WRITTEN
PERMISSION OF RESOURCE
CONSERVATION TECHNOLOGIES IS
PROHIBITED.

RESOURCE
CONSERVATION TECHNOLOGIES
64208 PARKLAND DRIVE SUITE 102
SARASOTA, FL 34243 888-708-6622

TITLE:
AG-2510 SPECIFICAION SHEET

SIZE A	SCALE: 1:2	SHEET 1 OF 1
------------------	------------	--------------

A