



33 CRANFIELD ROAD, TORONTO, ONTARIO M4B 3H2
PHONE: (416) 755-1191 • FAX: (416) 752-6717 • 1-800-661-7251

ELECTRONIC IGNITION TRANSFORMER INSTRUCTION MANUAL TYPE 2275

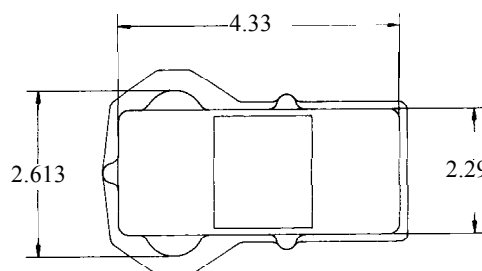
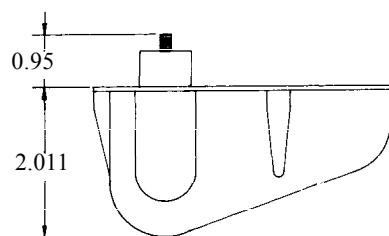
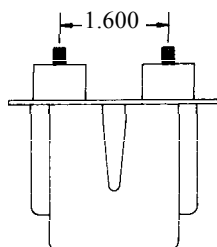
1.- Introduction

This instruction manual provides you with application information on the POW-R-PAK™ electronic ignition transformer. The device is designed for INTERMITTENT DUTY (Constant) and/or INTERRUPTED and provides the most reliable ignition source for gas and oil.

3.- Mechanical Specifications

2.- Absolute Maximum Ratings

Input Supply Voltage (V):	108-132
Input Supply Frequency (Hz):	50/60
Primary Volt - Amperes (VA):	86.5
Secondary Voltage (kV peak):	17.5
Secondary Frequency (kHz):	20
Secondary Short Circuit Current (mA):	45
Storage Temperature (°C):	-40 to +80
Operating Temperature (°C):	-30 to +40
Operating Relative Humidity (%):	90
Loading Air Gap (inches):	1/16 to 3/16



33 CRANFIELD ROAD, TORONTO, ONTARIO M4B 3H2
PHONE: (416) 755-1191 • FAX: (416) 752-6717 • 1-800-661-7251

ELECTRONIC IGNITION TRANSFORMER INSTRUCTION MANUAL TYPE 2275

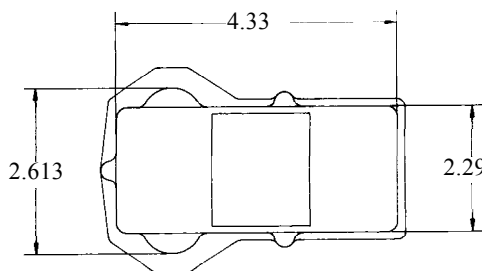
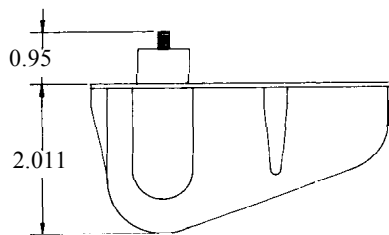
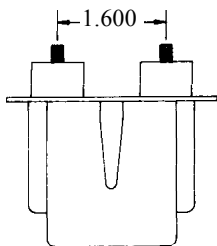
1.- Introduction

This instruction manual provides you with application information on the POW-R-PAK™ electronic ignition transformer. The device is designed for INTERMITTENT DUTY (Constant) and/or INTERRUPTED and provides the most reliable ignition source for gas and oil.

3.- Mechanical Specifications

2.- Absolute Maximum Ratings

Input Supply Voltage (V):	108-132
Input Supply Frequency (Hz):	50/60
Primary Volt - Amperes (VA):	86.5
Secondary Voltage (kV peak):	17.5
Secondary Frequency (kHz):	20
Secondary Short Circuit Current (mA):	45
Storage Temperature (°C):	-40 to +80
Operating Temperature (°C):	-30 to +40
Operating Relative Humidity (%):	90
Loading Air Gap (inches):	1/16 to 3/16



4.- Installation

- a) Before installation, inspect the case and the porcelain bushings for possible damage during transportation and handling. *Do not use the product if the secondary bushings are chipped or cracked.*
- b) Choose the correct base plate from the kit (if provided) to fit the burner. Route the primary lead wires to the appropriate lead exit on the base plate and fasten the Electronic Ignition Transformer to this plate with the three self-tapping screws provided.
- c) Install the electronic transformer assembly on the burner and route the primary leads to the junction box for connection. **Connect the white lead to the white neutral leads and the blue lead to the orange lead from the control.** Use only UL listed and CSA approved wire nuts.

5. - Maintenance

The Electronic Ignition Transformer has no moving parts. The only maintenance required is the cleaning of the porcelain bushings with a soft cloth during the annual furnace inspection.

6.- Testing

WARNING

This procedure is to be carried out by qualified personnel ONLY.

The voltages and currents available can cause serious injury and/or death. Extreme caution is to be used to avoid contact with the primary live leads. Do not allow any parts of your body to come closer than 5 inches to the energized secondary terminals or parts of the secondary circuit. Ensure the mid - point of the transformer is grounded before energizing the primary.

The 2280 Ignitor (2275U) can be tested as follows to ensure that it is operating properly.

Allanson's Ignitor/Transformer tester Chek-Mate™.

Use it to test any brand of Ignitor/Transformer. Simply touch the high voltage spheres to the high voltage contacts and if the green LED lights up - the unit is good.

Short Circuit Current Test.

Connect a true RMS high frequency milliammeter to the output terminals. Energize the primary with 120 Volts at 60 Hz. The reading on the milliammeter should be within 10% of the rated.

Open Circuit Test.

For this test you need an oscilloscope and a high voltage oscilloscope probe. Connect the High voltage probe from one secondary to the ground terminal which is the screw in front and between the high voltage bushings. Measure the peak of the wave form on the oscilloscope. Repeat the procedure for the opposite high voltage terminal. The sum of the two readings should be within 10% of the name plate rating.

Field Testing

If none of the above options are available, connect the transformer grounding terminal to a good ground. Connect the primary leads of the transformer to 120 Volts 60 Hz. Energize the primary. Holding the handle of a well insulated screw driver, touch one part of the shaft of the screw driver to one high voltage terminal. Pivot on this terminal until you draw an arc from the opposite terminal. Gradually increase the air gap and notice the distance at which the arc is extinguished. The minimum distance should be 1/2".

ALLANSON ENVIRONMENTAL ELECTRICS GROUP, 33 CRANFIELD ROAD, TORONTO, ONTARIO M4B 3H2
PHONE: (416) 755-1191 • FAX: (416) 752-6717 • 1-800-661-7251 WEB: www.allanson.com

21-620
REV: 01/08

4.- Installation

- a) Before installation, inspect the case and the porcelain bushings for possible damage during transportation and handling. *Do not use the product if the secondary bushings are chipped or cracked.*
- b) Choose the correct base plate from the kit (if provided) to fit the burner. Route the primary lead wires to the appropriate lead exit on the base plate and fasten the Electronic Ignition Transformer to this plate with the three self-tapping screws provided.
- c) Install the electronic transformer assembly on the burner and route the primary leads to the junction box for connection. **Connect the white lead to the white neutral leads and the blue lead to the orange lead from the control.** Use only UL listed and CSA approved wire nuts.

5. - Maintenance

The Electronic Ignition Transformer has no moving parts. The only maintenance required is the cleaning of the porcelain bushings with a soft cloth during the annual furnace inspection.

6.- Testing

WARNING

This procedure is to be carried out by qualified personnel ONLY.

The voltages and currents available can cause serious injury and/or death. Extreme caution is to be used to avoid contact with the primary live leads. Do not allow any parts of your body to come closer than 5 inches to the energized secondary terminals or parts of the secondary circuit. Ensure the mid - point of the transformer is grounded before energizing the primary.

The 2280 Ignitor (2275U) can be tested as follows to ensure that it is operating properly.

Allanson's Ignitor/Transformer tester Chek-Mate™.

Use it to test any brand of Ignitor/Transformer. Simply touch the high voltage spheres to the high voltage contacts and if the green LED lights up - the unit is good.

Short Circuit Current Test.

Connect a true RMS high frequency milliammeter to the output terminals. Energize the primary with 120 Volts at 60 Hz. The reading on the milliammeter should be within 10% of the rated.

Open Circuit Test.

For this test you need an oscilloscope and a high voltage oscilloscope probe. Connect the High voltage probe from one secondary to the ground terminal which is the screw in front and between the high voltage bushings. Measure the peak of the wave form on the oscilloscope. Repeat the procedure for the opposite high voltage terminal. The sum of the two readings should be within 10% of the name plate rating.

Field Testing

If none of the above options are available, connect the transformer grounding terminal to a good ground. Connect the primary leads of the transformer to 120 Volts 60 Hz. Energize the primary. Holding the handle of a well insulated screw driver, touch one part of the shaft of the screw driver to one high voltage terminal. Pivot on this terminal until you draw an arc from the opposite terminal. Gradually increase the air gap and notice the distance at which the arc is extinguished. The minimum distance should be 1/2".

ALLANSON ENVIRONMENTAL ELECTRICS GROUP, 33 CRANFIELD ROAD, TORONTO, ONTARIO M4B 3H2
PHONE: (416) 755-1191 • FAX: (416) 752-6717 • 1-800-661-7251 WEB: www.allanson.com

21-620
REV: 01/08