

Replacement Parts Catalog

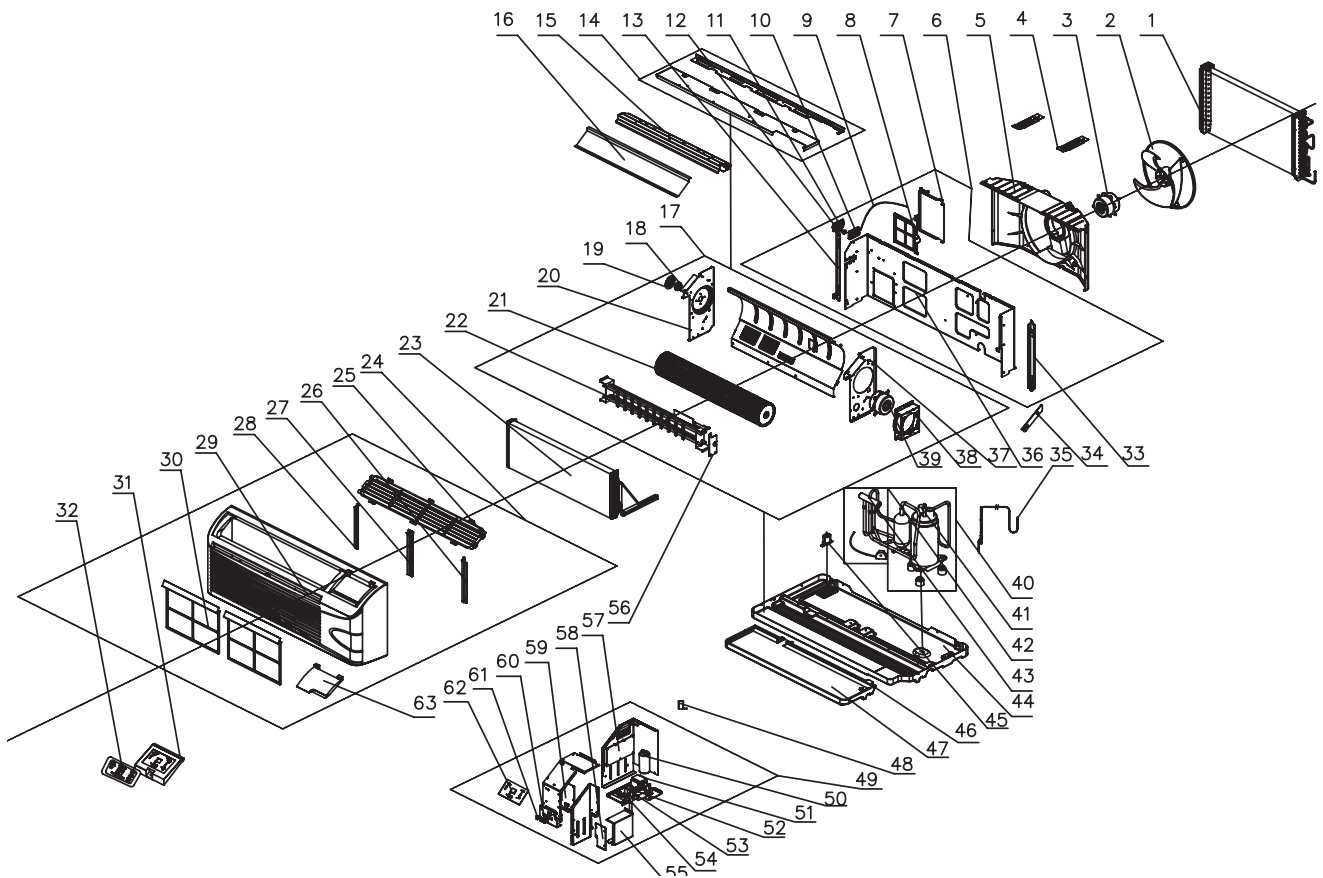
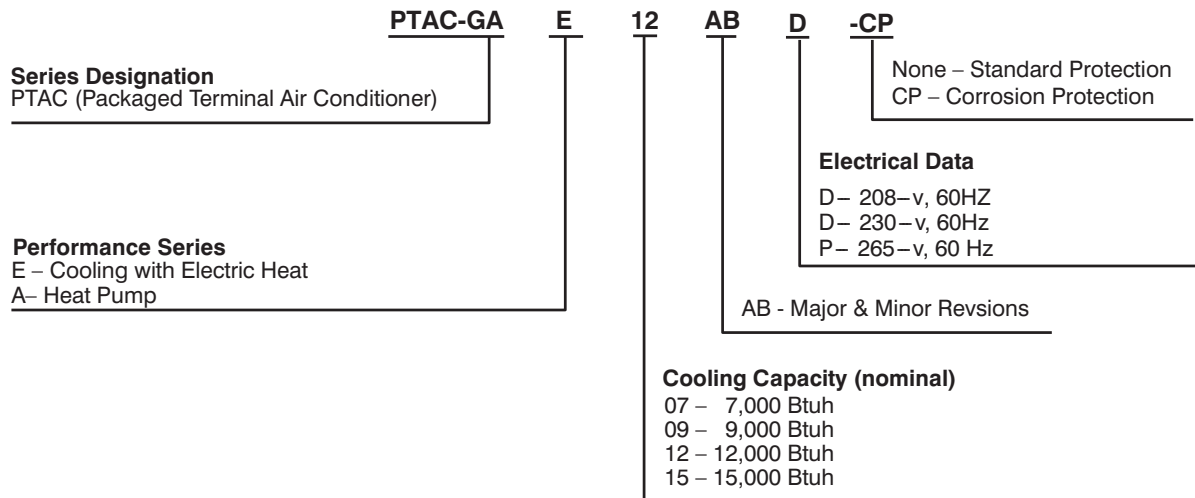


Table of Contents

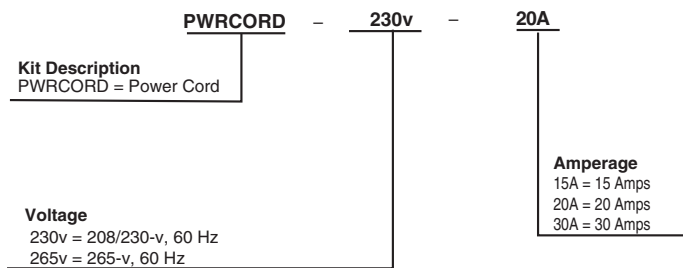
Model Number	Description	Page
PTAC-GAE07AB-D	PTAC 7,000 BTU Heat/Cool 208/230v	2-3
PTAC-GAE09AB-D	PTAC 9,000 BTU Heat/Cool 208/230v	4-5
PTAC-GAE12AB-D	PTAC 12,000 BTU Heat/Cool 208/230v	6-7
PTAC-GAE15AB-D	PTAC 15,000 BTU Heat/Cool 208/230v	8-9
PTAC-GAE07AB-P	PTAC 7,000 BTU Heat/Cool 265v	10-11
PTAC-GAE09AB-P	PTAC 9,000 BTU Heat/Cool 265v	12-13
PTAC-GAE12AB-P	PTAC 12,000 BTU Heat/Cool 265v	14-45
PTAC-GAE15AB-P	PTAC 15,000 BTU Heat/Cool 265v	16-17
PTAC-GAA07AB-D	PTAC 7,000 BTU Heat Pump 208/230v	18-19
PTAC-GAA09AB-D	PTAC 9,000 BTU Heat Pump 208/230v	20-21
PTAC-GAA12AB-D	PTAC 12,000 BTU Heat Pump 208/230v	22-23
PTAC-GAA15AB-D	PTAC 15,000 BTU Heat Pump 208/230v	24-25
PTAC-GAA07AB-P	PTAC 7,000 BTU Heat Pump 265v	26-27
PTAC-GAA09AB-P	PTAC 9,000 BTU Heat Pump 265v	28-29
PTAC-GAA12AB-P	PTAC 12,000 BTU Heat Pump 265v	30-31
PTAC-GAA15AB-P	PTAC 15,000 BTU Heat Pump 265v	32-33

Product Catalog Number-Nomenclature

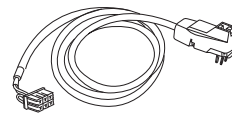


A08385

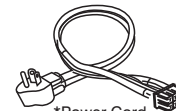
ACCESSORY POWER CORD (REQUIRED) CATALOG NUMBER



A07636



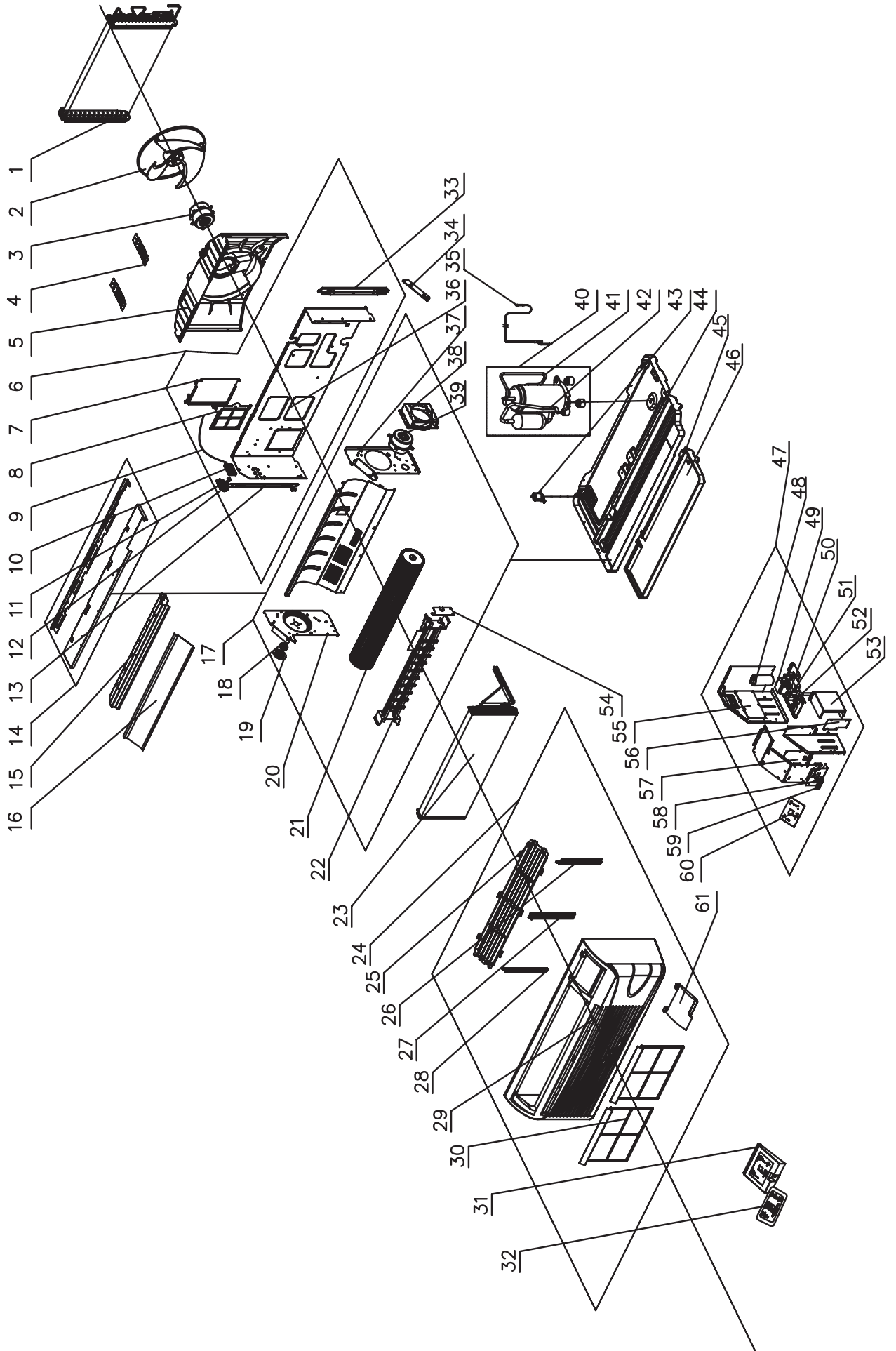
Power Cord for 208/230v



*Power Cord for 265v

A07637

**7,000 BTUH HEAT/COOL 208/230V
Model Number: PTAC-GAE07AB-D**

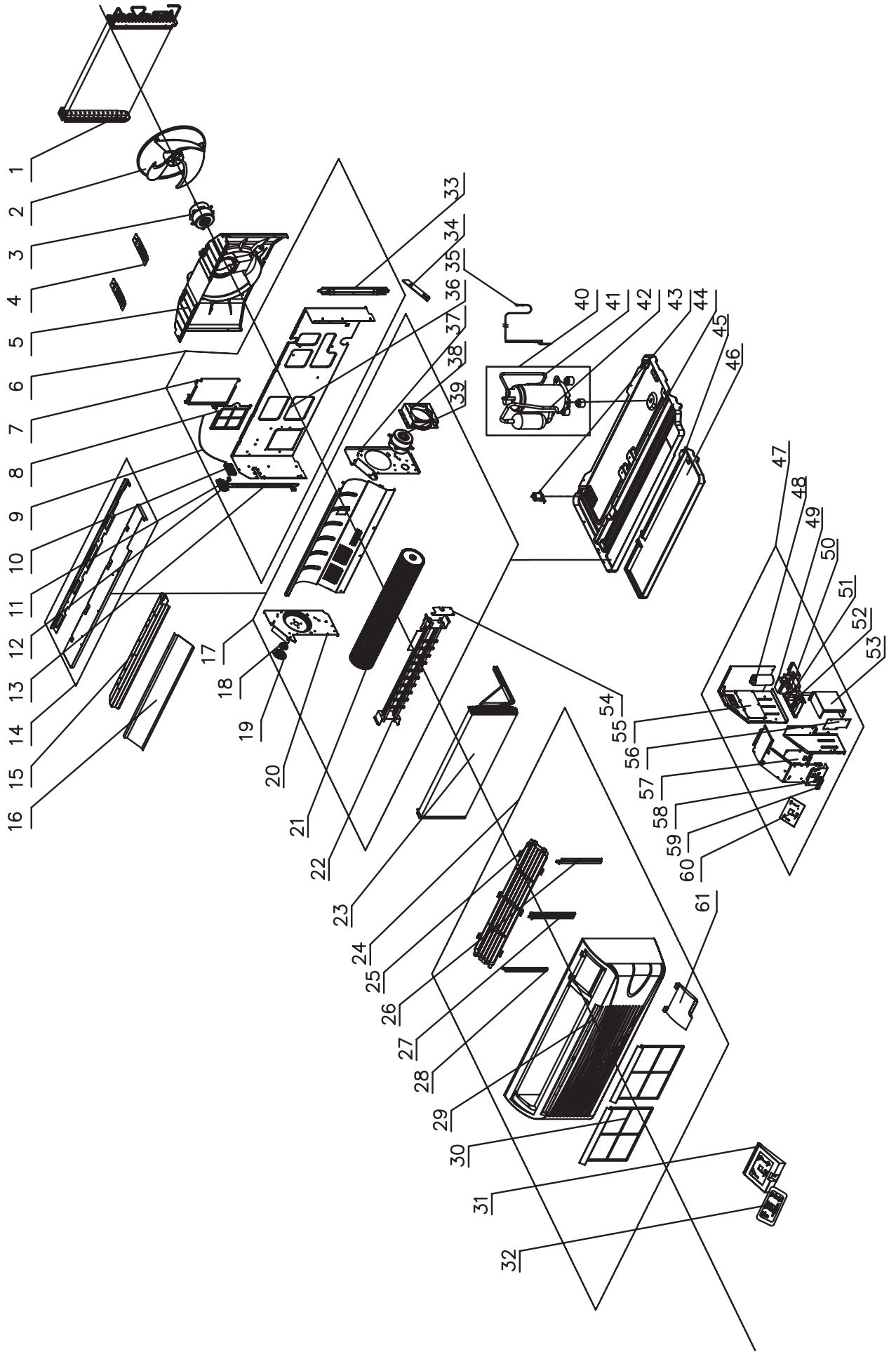


7,000 BTUH HEAT/COOL 208/230V
Model Number: PTAC-GAE07AB-D
Gree Engineering Number: GAE07AB-D3RNB1A

Ref No.	Part Number	Part Description	Qty
1	01101272	Condenser Coil	1
2	10331004	Outdoor Axial Flow Fan Blade	1
3	150110343	Outdoor Fan Motor	1
4	01381004	Shroud Support Bracket	2
5	10371004	Condenser Shroud	1
6	01231050	Partition Wall Sub Assy	1
7	01441008	Outdoor Air Vent Door Sub-Assy	1
8	11121213	Outdoor Air Vent Filter	1
9	02121014	Outdoor Air Vent Door Cable	1
10	26231155	Lower Vent Lever Housing	1
11	26231153	Outdoor Air Vent Lever	1
12	26231154	Upper Vent Lever Housing	1
13	01701015	Outer Support Side Angle (left)	1
14	01251013	Top Cover Plate Sub-Assy	1
15	02121010P	Discharge Air Deck	1
16	01471007	Discharge Air Screen	1
17	01221012	Indoor Air Section Sub-Assy	1
18	26151139	Blower Wheel Bearing Housing	1
19	02111010	Blower Wheel Bearing	1
20	02121008P	Indoor Side Wall (left)	1
21	10351002	Indoor Blower Wheel/Cross Flow Fan	1
22	3200102602	Electric Heater Assy	1
23	01001066	Evaporator Coil	1
24	20001390	Front Panel Sub-Assy	1
25	22411153	Discharge Air Grille	1
26	26111139	Indoor Air Filter Supports (right)	1
27	26111140	Indoor Air Filter Supports (center)	1
28	26111141	Indoor Air Filter Supports (left)	1
29	20001386	Front Panel (only)	1
30	11121212	Indoor Air Filter	2
31	20161239	Control Escutcheon Plate	1

Ref No.	Part Number	Part Description	Qty
32	63061121	Membrane/Keypad	1
33	1701016	Outer Support Side Angle (right)	1
34	01361008P	Baffle Plate	1
35	3001424	Capillary Assy	1
36	01231041P	Partition Wall	1
37	02121009P	Indoor Side Wall (right)	1
38	01701014P	Motor Support Sub-Assy	1
39	1501180202	Indoor Fan Motor	1
40	101061	Compressor and fittings	1
41	3611745	Discharge Tube	1
42	3621923	Suction Tube	1
43	7100164	Condensate Drain Valve	1
44	0120102601P	Chassis Assy	1
45	12411904	Foam Condensate Tray	1
46	2121012	Heat Insulation Plate	1
47	1401254	Control Box Assy	1
48	33010045	Capacitor CBB65 15uF/450V	1
49	43110270	Transformer	1
50	33010089	Capacitor CBB611A 1uF/450V	1
51	33010025	Capacitor	1
52	42011103	Terminal Board 2-8	2
53	1411050	Junction Box	1
54	2111009	Heater Wiring Plate	1
55	30032021	Main Control Circuit Board 1	1
56	1251015	Junction Box Plate	1
57	30032022	Main Relay/Power Circuit Board 2	1
58	42010037	Connector 5EHDV-02P	1
59	42010039S	Connector 5EHDV-07P	1
60	30542007	PCB	1
61	20161238	Remote Board	1

**9,000 BTUH HEAT/COOL 208/230V
Model Number: PTAC-GAE09AB-D**

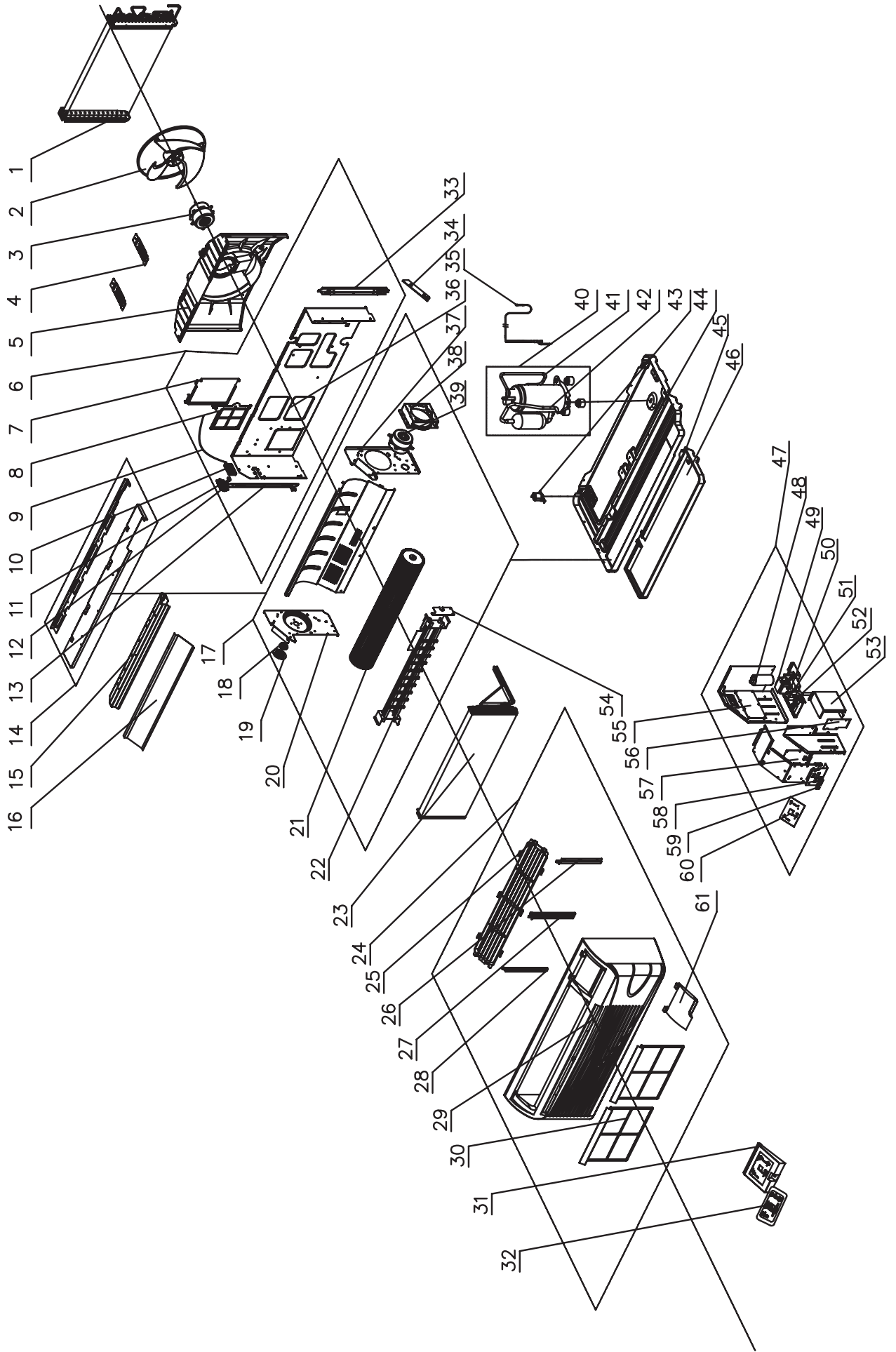


9,000 BTUH HEAT/COOL 208/230V
Model Number: PTAC-GAE09AB-D
Gree Engineering Number: GAE09AB-D3RNB1A

Ref No.	Part Number	Part Description	Qty
1	01101809	Condenser Coil	1
2	10331004	Outdoor Axial Flow Fan Blade	1
3	150110343	Outdoor Fan Motor	1
4	01381004	Shroud Support Bracket	2
5	10371004	Condenser Shroud	1
6	01231050	Partition Wall Sub Assy	1
7	01441008	Outdoor Air Vent Door Sub-Assy	1
8	11121213	Outdoor Air Vent Filter	1
9	02121014	Outdoor Air Vent Door Cable	1
10	26231155	Lower Vent Lever Housing	1
11	26231153	Outdoor Air Vent Lever	1
12	26231154	Upper Vent Lever Housing	1
13	01701015	Outer Support Side Angle (left)	1
14	01251013	Top Cover Plate Sub-Assy	1
15	02121010P	Discharge Air Deck	1
16	01471007	Discharge Air Screen	1
17	01221011	Indoor Air Section Sub-Assy	1
18	26151139	Blower Wheel Bearing Housing	1
19	02111010	Blower Wheel Bearing	1
20	02121008P	Indoor Side Wall (left)	1
21	10351002	Indoor Blower Wheel/Cross Flow Fan	1
22	3200102602	Electric Heater Assy	1
23	01001060	Evaporator Coil	1
24	20001390	Front Panel Sub-Assy	1
25	22411153	Discharge Air Grille	1
26	26111139	Indoor Air Filter Supports (right)	1
27	26111140	Indoor Air Filter Supports (center)	1
28	26111141	Indoor Air Filter Supports (left)	1
29	20001386	Front Panel (only)	1
30	11121212	Indoor Air Filter	2
31	20161239	Control Escutcheon Plate	1

Ref No.	Part Number	Part Description	Qty
32	63061121	Membrane/Keypad	1
33	01701016	Outer Support Side Angle (right)	1
34	01361008P	Baffle Plate	1
35	03001119	Capillary Assy	1
36	01231041P	Partition Wall	1
37	02121009P	Indoor Side Wall (right)	1
38	01701014P	Motor Support Sub-Assy	1
39	15011802	Indoor Fan Motor	1
40	00101049	Compressor and fittings	1
41	03611824	Discharge Tube	1
42	03621829	Suction Tube	1
43	07100164	Condensate Drain Valve	1
44	0120102603P	Chassis Sub-Assy	1
45	12411904	Foam Condensate Tray	1
46	02121012	Heat Insulation Plate	1
47	01401426	Control Box Assy	1
48	33000017	Capacitor	1
49	43110270	Transformer	1
50	33010020	Capacitor	1
51	33010025	Capacitor	1
52	42011103	Terminal Board 2-8	2
53	01411050	Junction Box	1
54	02111009	Heater Wiring Plate	1
55	30032021	Main Control Circuit Board 1	1
56	01251015	Junction Box Plate	1
57	30032022	Main Relay/Power Circuit Board 2	1
58	42010037	Connector 5EHDV-02P	1
59	42010039S	Connector 5EHDV-07P	1
60	30542007	PCB	1
61	20161238	Remote Board	1

**12,000 BTUH HEAT/COOL 208/230V
Model Number: PTAC-GAE12AB-D**

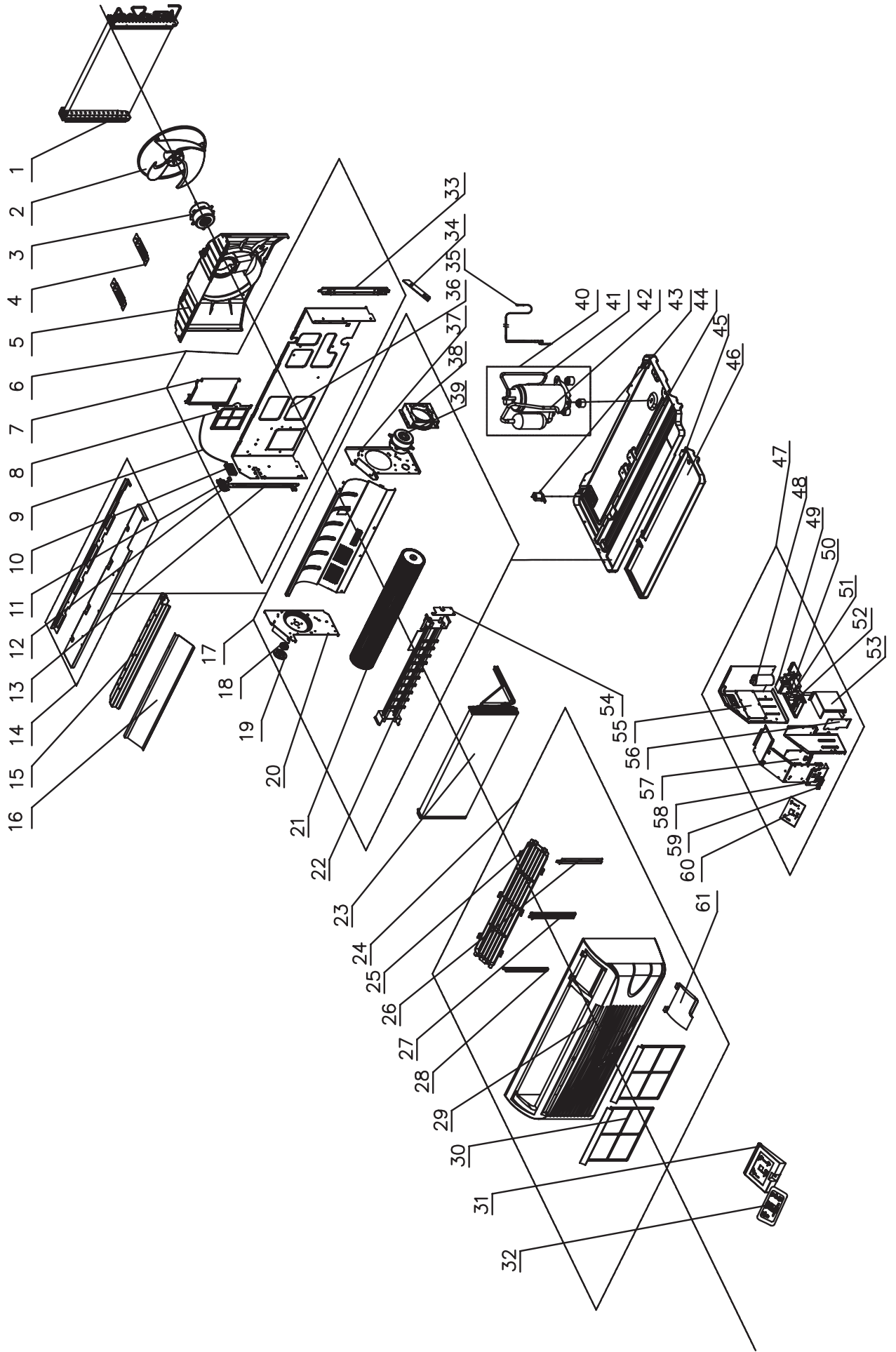


12,000 BTUH HEAT/COOL 208/230V
Model Number: PTAC-GAE12AB-D
Gree Engineering Number: GAE12AB-D3RNB1A

Ref No.	Part Number	Part Description	Qty
1	01101809	Condenser Coil	1
2	10331004	Outdoor Axial Flow Fan Blade	1
3	15011047	Outdoor Fan Motor	1
4	01381004	Shroud Support Bracket	2
5	10371004	Condenser Shroud	1
6	01231050	Partition Wall Sub Assy	1
7	01441008	Outdoor Air Vent Door Sub-Assy	1
8	11121213	Outdoor Air Vent Filter	1
9	02121014	Outdoor Air Vent Door Cable	1
10	26231155	Lower Vent Lever Housing	1
11	26231153	Outdoor Air Vent Lever	1
12	26231154	Upper Vent Lever Housing	1
13	01701015	Outer Support Side Angle (left)	1
14	01251013	Top Cover Plate Sub-Assy	1
15	02121010P	Discharge Air Deck	1
16	01471007	Discharge Air Screen	1
17	014410904	Indoor Air Section Sub-Assy	1
18	26151139	Blower Wheel Bearing Housing	1
19	02111010	Blower Wheel Bearing	1
20	02121008P	Indoor Side Wall (left)	1
21	10351002	Indoor Blower Wheel/Cross Flow Fan	1
22	32001026	Electric Heater Assy	1
23	01001285	Evaporator Coil	1
24	20001390	Front Panel Sub-Assy	1
25	22411153	Discharge Air Grille	1
26	26111139	Indoor Air Filter Supports (right)	1
27	26111140	Indoor Air Filter Supports (center)	1
28	26111141	Indoor Air Filter Supports (left)	1
29	20001386	Front Panel (only)	1
30	11121212	Indoor Air Filter	2
31	20161239	Control Escutcheon Plate	1

Ref No.	Part Number	Part Description	Qty
32	63061121	Membrane/Keypad	1
33	1701016	Outer Support Side Angle (right)	1
34	01361008P	Baffle Plate	1
35	3001139	Capillary Assy	1
36	01231041P	Partition Wall	1
37	02121009P	Indoor Side Wall (right)	1
38	01701014P	Motor Support Sub-Assy	1
39	1501180203	Indoor Fan Motor	1
40	101053	Compressor and fittings	1
41	3611826	Discharge Tube	1
42	3621831	Suction Tube	1
43	7100164	Condensate Drain Valve	1
44	0120102604P	Chassis Sub-Assy	1
45	12411904	Foam Condensate Tray	1
46	2121012	Heat Insulation Plate	1
47	1401428	Control Box Assy	1
48	33000017	Capacitor	1
49	43110270	Transformer	1
50	33010026	Capacitor CBB61 2.5uF/450V	1
51	33010089	Capacitor CBB611A 1uF/450V	1
52	42011103	Terminal Board 2-8	2
53	1411050	Junction Box	1
54	2111009	Heater Wiring Plate	1
55	30032021	Main Control Circuit Board 1	1
56	1251015	Junction Box Plate	1
57	30032022	Main Relay/Power Circuit Board 2	1
58	42010037	Connector 5EHDV-02P	1
59	42010039S	Connector 5EHDV-07P	1
60	30542007	PCB	1
61	20161238	Remote Board	1

**15,000 BTUH HEAT/COOL 208/230V
Model Number: PTAC-GAE15AB-D**

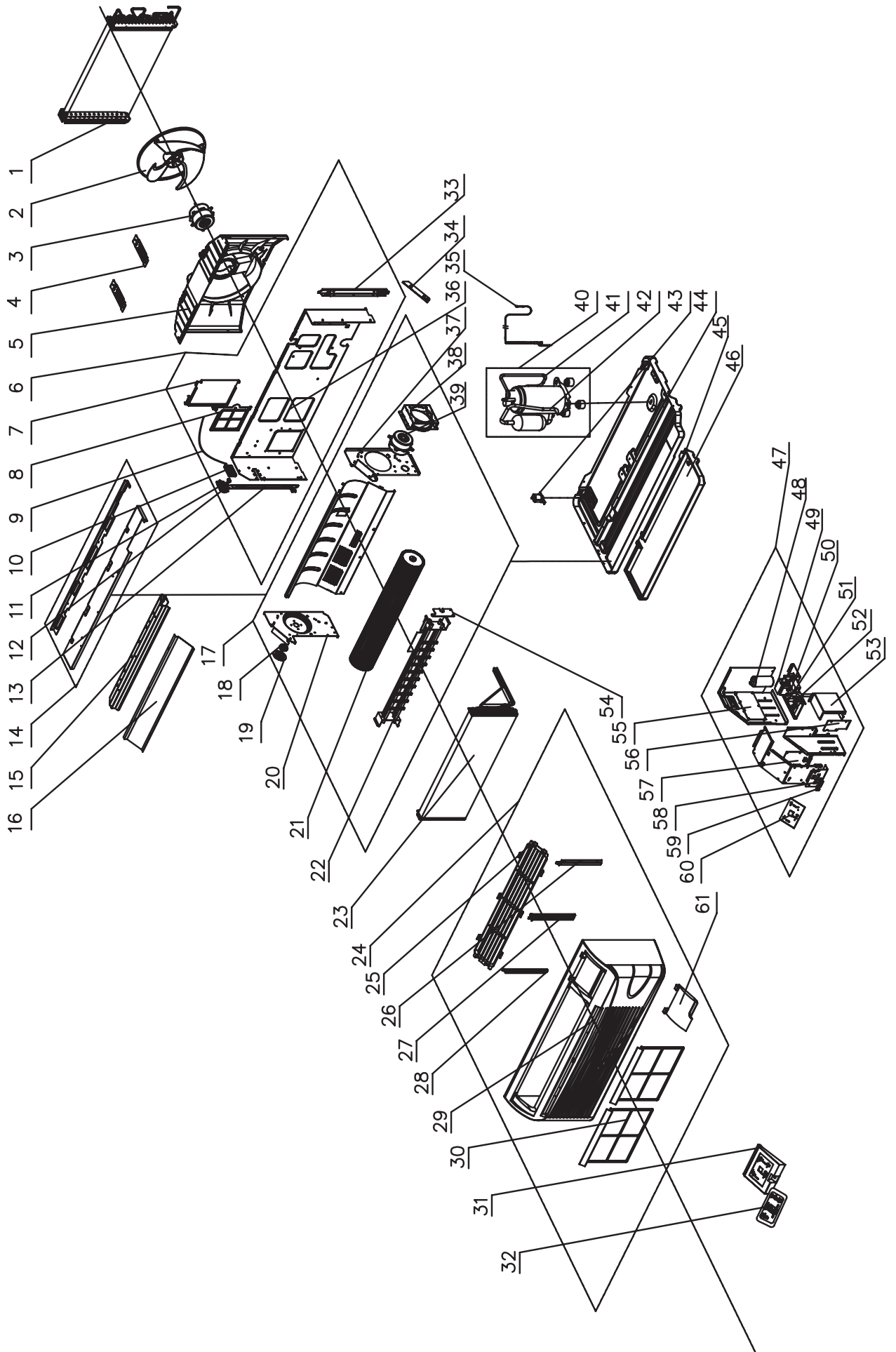


15,000 BTUH HEAT/COOL 208/230V
Model Number: PTAC-GAE15AB-D
Gree Engineering Number: GAE15AB-D3RNB1A

Ref No.	Part Number	Part Description	Qty
1	01101191	Condenser Coil	1
2	10331004	Outdoor Axial Flow Fan Blade	1
3	15011047	Outdoor Fan Motor	1
4	01381004	Shroud Support Bracket	2
5	10371004	Condenser Shroud	1
6	01231050	Partition Wall Sub Assy	1
7	01441008	Outdoor Air Vent Door Sub-Assy	1
8	11121213	Outdoor Air Vent Filter	1
9	02121014	Outdoor Air Vent Door Cable	1
10	26231155	Lower Vent Lever Housing	1
11	26231153	Outdoor Air Vent Lever	1
12	26231154	Upper Vent Lever Housing	1
13	01701015	Outer Support Side Angle (left)	1
14	01251013	Top Cover Plate Sub-Assy	1
15	02121010P	Discharge Air Deck	1
16	01471007	Discharge Air Screen	1
17	0144100904	Indoor Air Section Sub-Assy	1
18	26151139	Blower Wheel Bearing Housing	1
19	02111010	Blower Wheel Bearing	1
20	02121008P	Indoor Side Wall (left)	1
21	10351002	Indoor Blower Wheel/Cross Flow Fan	1
22	32001026	Electric Heater Assy	1
23	01001285	Evaporator Coil	1
24	20001390	Front Panel Sub-Assy	1
25	22411153	Discharge Air Grille	1
26	26111139	Indoor Air Filter Supports (right)	1
27	26111140	Indoor Air Filter Supports (center)	1
28	26111141	Indoor Air Filter Supports (left)	1
29	20001386	Front Panel (only)	1
30	11121212	Indoor Air Filter	2
31	20161239	Control Escutcheon Plate	1

Ref No.	Part Number	Part Description	Qty
32	63061121	Membrane/Keypad	1
33	01701016	Outer Support Side Angle (right)	1
34	01361008P	Baffle Plate	1
35	03001341	Capillary Assy	1
36	01231041P	Partition Wall	1
37	02121009P	Indoor Side Wall (right)	1
38	01701014P	Motor Support Sub-Assy	1
39	1501180203	Indoor Fan Motor	1
40	00101085	Compressor and fittings	1
41	03611432	Discharge Tube	1
42	03621354	Suction Tube	1
43	07100164	Condensate Drain Valve	1
44	01201026P	Chassis Assy	1
45	12411904	Foam Condensate Tray	1
46	02121012	Heat Insulation Plate	1
47	01401873	Control Box Assy	1
48	33000045	Capacitor 40uF/450V φ50X90	1
49	43110270	Transformer	1
50	33010026	Capacitor CBB61 2.5uF/450V	1
51	33010089	Capacitor CBB611A 1uF/450V	1
52	42011103	Terminal Board 2-8	2
53	01411050	Junction Box	1
54	02111009	Heater Wiring Plate	1
55	30032021	Main Control Circuit Board 1	1
56	01251015	Junction Box Plate	1
57	30032022	Main Relay/Power Circuit Board 2	1
58	42010037	Connector 5EHDV-02P	1
59	42010039S	Connector 5EHDV-07P	1
60	30542007	PCB	1
61	20161238	Remote Board	1

7,000 BTUH HEAT/COOL 265V
Model Number: PTAC-GAE07AB-P

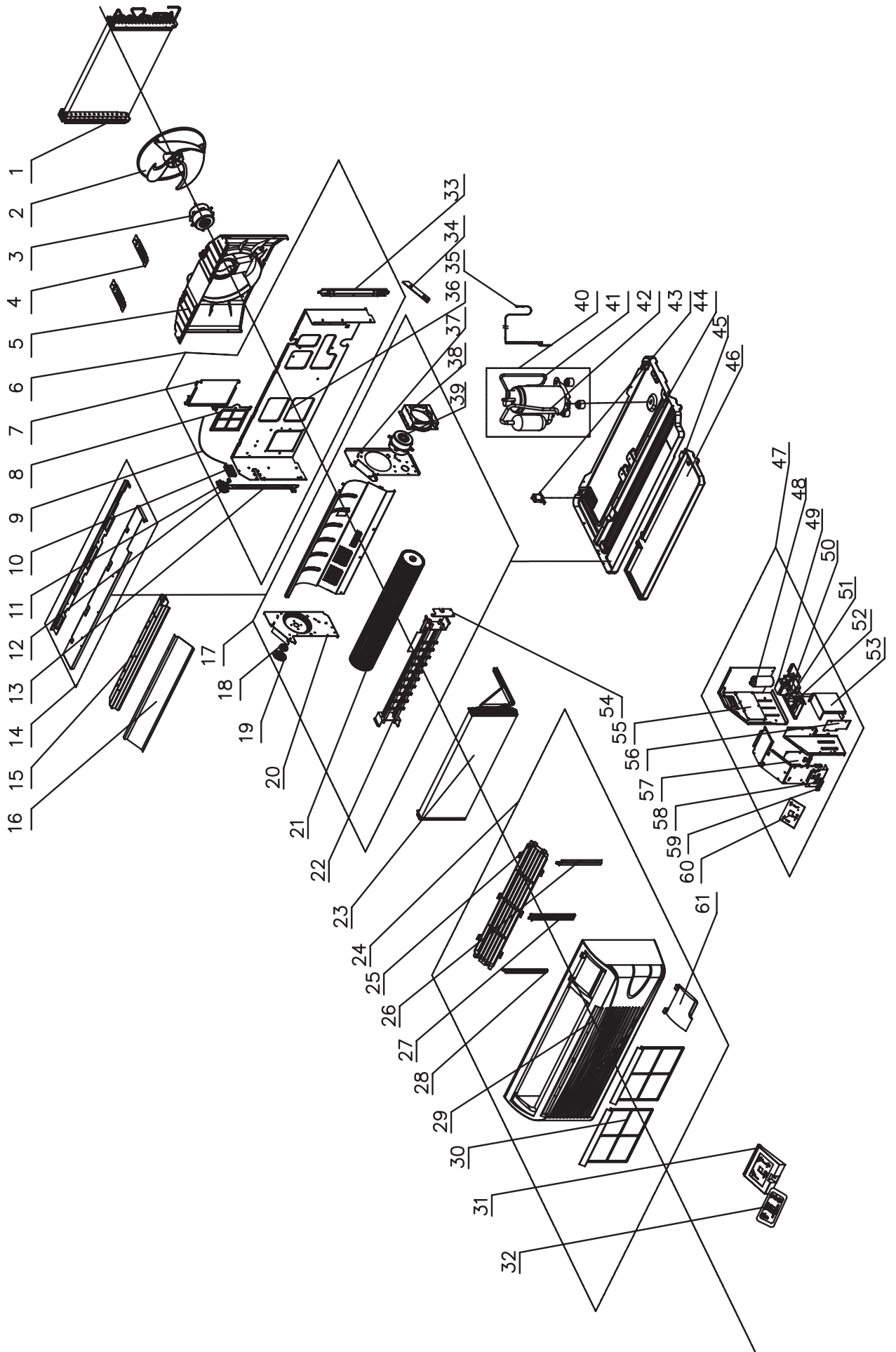


7,000 BTUH HEAT/COOL 265V
Model Number: PTAC-GAE07AB-P
Gree Engineering Number: GAE07AB-P3RNB1A

Ref No.	Part Number	Part Description	Qty
1	390002072	Temperature Sensor(20K red)	1
2	01101272	Condenser Coil	1
3	10331004	Outdoor Axial Flow Fan Blade	1
4	150110345	Outdoor Fan Motor	1
5	01381004	Shroud Support Bracket	2
6	10371004	Condenser Shroud	1
7	01231050	Partition Wall Sub Assy	1
8	01441008	Outdoor Air Vent Door Sub-Assy	1
9	11121213	Outdoor Air Vent Filter	1
10	02121014	Outdoor Air Vent Door Cable	1
11	26231155	Lower Vent Lever Housing	1
12	26231153	Outdoor Air Vent Lever	1
13	26231154	Upper Vent Lever Housing	1
14	none	Outer Support sub-Assy (left)	0
15	01251013	Top Cover Plate Sub-Assy	1
16	02121010P	Discharge Air Deck	1
17	01471007	Discharge Air Screen	1
18	01221013	Indoor Air Section Sub-Assy	1
19	26151139	Blower Wheel Bearing Housing	1
20	02111010	Blower Wheel Bearing	1
21	02121008P	Indoor Side Wall (left)	1
22	10351002	Indoor Blower Wheel/Cross Flow Fan	1
23	3200102603	Electric Heater Assy	1
24	390001921	Coil Temperature Sensor (20K black)	1
25	01001066	Evaporator Coil	1
26	2000139001	Front Panel Sub-Assy	1
27	22411153	Discharge Air Grille	1
28	26111139	Indoor Air Filter Supports (right)	1
29	26111140	Indoor Air Filter Supports (center)	1
30	26111141	Indoor Air Filter Supports (left)	1
31	20001386	Front Panel (only)	1
32	11121212	Indoor Air Filter	2

Ref No.	Part Number	Part Description	Qty
33	20161239	Control Escutcheon Plate	1
34	63061121	Membrane/Keypad	1
35	none	Outer Support sub-Assy (right)	0
36	01361008P	Baffle Plate	1
37	03001424	Capillary Assy	1
38	01231041P	Partition Wall	1
39	02121009P	Indoor Side Wall (right)	1
40	01701014P	Motor Support Sub-Assy	1
41	1501180204	Indoor Fan Motor	1
42	3900012123	Temperature Sensor (15K black)	1
43	00101060	Compressor and fittings	1
44	03611745	Discharge Tube	1
45	03621923	Suction Tube	1
46	07100164	Condensate Drain Valve	1
47	0120102601P	Chassis Assy	1
48	12411904	Foam Condensate Tray	1
49	02121012	Heat Insulation Plate	1
50	0140125401	Control Box Assy	1
51	33010045	Capacitor CBB65 15uF/450V	1
52	43110269	Transformer	1
53	33010089	Capacitor CBB611A 1uF/450V	1
54	33010020	Capacitor	1
55	42011103	Terminal Board 2-8	2
56	01411050	Junction Box	1
57	02111009	Heater Wiring Plate	1
58	30032021	Main Control Circuit Board 1	1
59	01251015	Junction Box Plate	1
60	30032023	Main Relay/Power Circuit Board 2	1
61	42010039S	Connector 5EHDV-07P	1
62	42010037	Connector 5EHDV-02P	1
63	30542007	PCB	1
64	20161238	Remote Board	1

9,000 BTUH HEAT/COOL 265V
Model Number: PTAC-GAE09AB-P

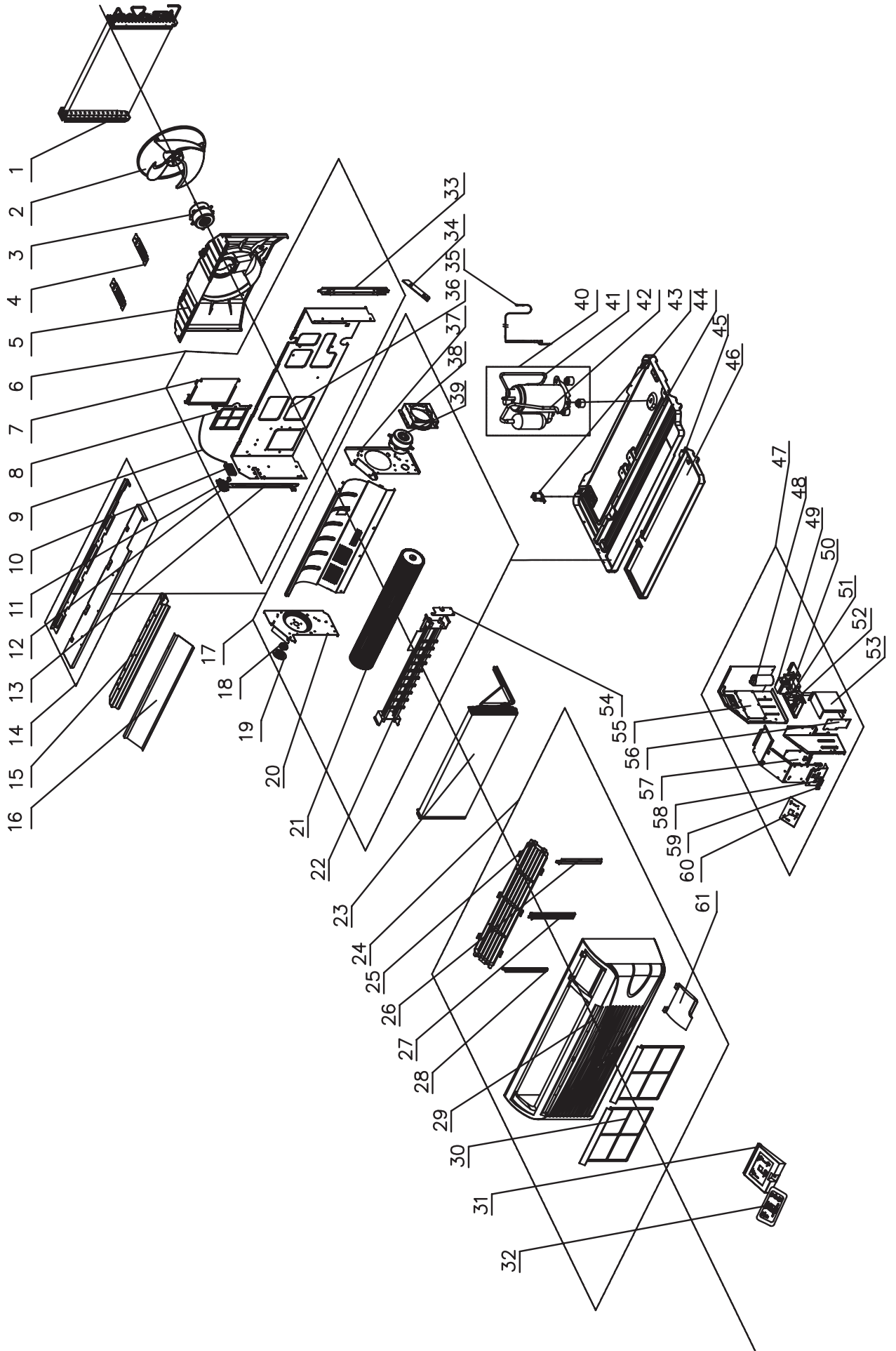


9,000 BTUH HEAT/COOL 265V
Model Number: PTAC-GAE09AB-P
Gree Engineering Number: GAE09AB-P3RNB1A

Ref No.	Part Number	Part Description	Qty
1	01101809	Condenser Coil	1
2	10331004	Outdoor Axial Flow Fan Blade	1
3	150110345	Outdoor Fan Motor	1
4	01381004	Shroud Support Bracket	2
5	10371004	Condenser Shroud	1
6	01231050	Partition Wall Sub Assy	1
7	01441008	Outdoor Air Vent Door Sub-Assy	1
8	11121213	Outdoor Air Vent Filter	1
9	02121014	Outdoor Air Vent Door Cable	1
10	26231155	Lower Vent Lever Housing	1
11	26231153	Outdoor Air Vent Lever	1
12	26231154	Upper Vent Lever Housing	1
13	01701015	Outer Support Side Angle (left)	1
14	01251013	Top Cover Plate Sub-Assy	1
15	02121010P	Discharge Air Deck	1
16	01471007	Discharge Air Screen	1
17	0122101101	Indoor Air Section Sub-Assy	1
18	26151139	Blower Wheel Bearing Housing	1
19	02111010	Blower Wheel Bearing	1
20	02121008P	Indoor Side Wall (left)	1
21	10351002	Indoor Blower Wheel/Cross Flow Fan	1
22	3200102603	Electric Heater Assy	1
23	01001043	Evaporator Coil	1
24	20001390	Front Panel Sub-Assy	1
25	22411153	Discharge Air Grille	1
26	26111139	Indoor Air Filter Supports (right)	1
27	26111140	Indoor Air Filter Supports (center)	1
28	26111141	Indoor Air Filter Supports (left)	1
29	20001386	Front Panel (only)	1
30	11121212	Indoor Air Filter	2
31	20161239	Control Escutcheon Plate	1

Ref No.	Part Number	Part Description	Qty
32	63061121	Membrane/Keypad	1
33	01701016	Outer Support Side Angle (right)	1
34	01361008P	Baffle Plate	1
35	03001079	Capillary Assy	1
36	01231041P	Partition Wall	1
37	02121009P	Indoor Side Wall (right)	1
38	01701014P	Motor Support Sub-Assy	1
39	1501180201	Indoor Fan Motor	1
40	00101055	Compressor and fittings	1
41	03611825	Discharge Tube	1
42	03621830	Suction Tube	1
43	07100164	Condensate Drain Valve	1
44	0120102601P	Chassis Assy	1
45	12411904	Foam Condensate Tray	1
46	02121012	Heat Insulation Plate	1
47	01401427	Control Box Assy	1
48	33010045	Capacitor CBB65 15uF/450V	1
49	43110269	Transformer	1
50	33010020	Capacitor	1
51	33010020	Capacitor	1
52	42011103	Terminal Board 2-8	2
53	01411050	Junction Box	1
54	02111009	Heater Wiring Plate	1
55	30032021	Main Control Circuit Board 1	1
56	01251015	Junction Box Plate	1
57	30032023	Main Relay/Power Circuit Board 2	1
58	42010037	Connector 5EHDV-02P	1
59	42010039S	Connector 5EHDV-07P	1
60	30542007	PCB	1
61	20161238	Remote Board	1

12,000 BTUH HEAT/COOL 265V
Model Number: PTAC-GAE12AB-P

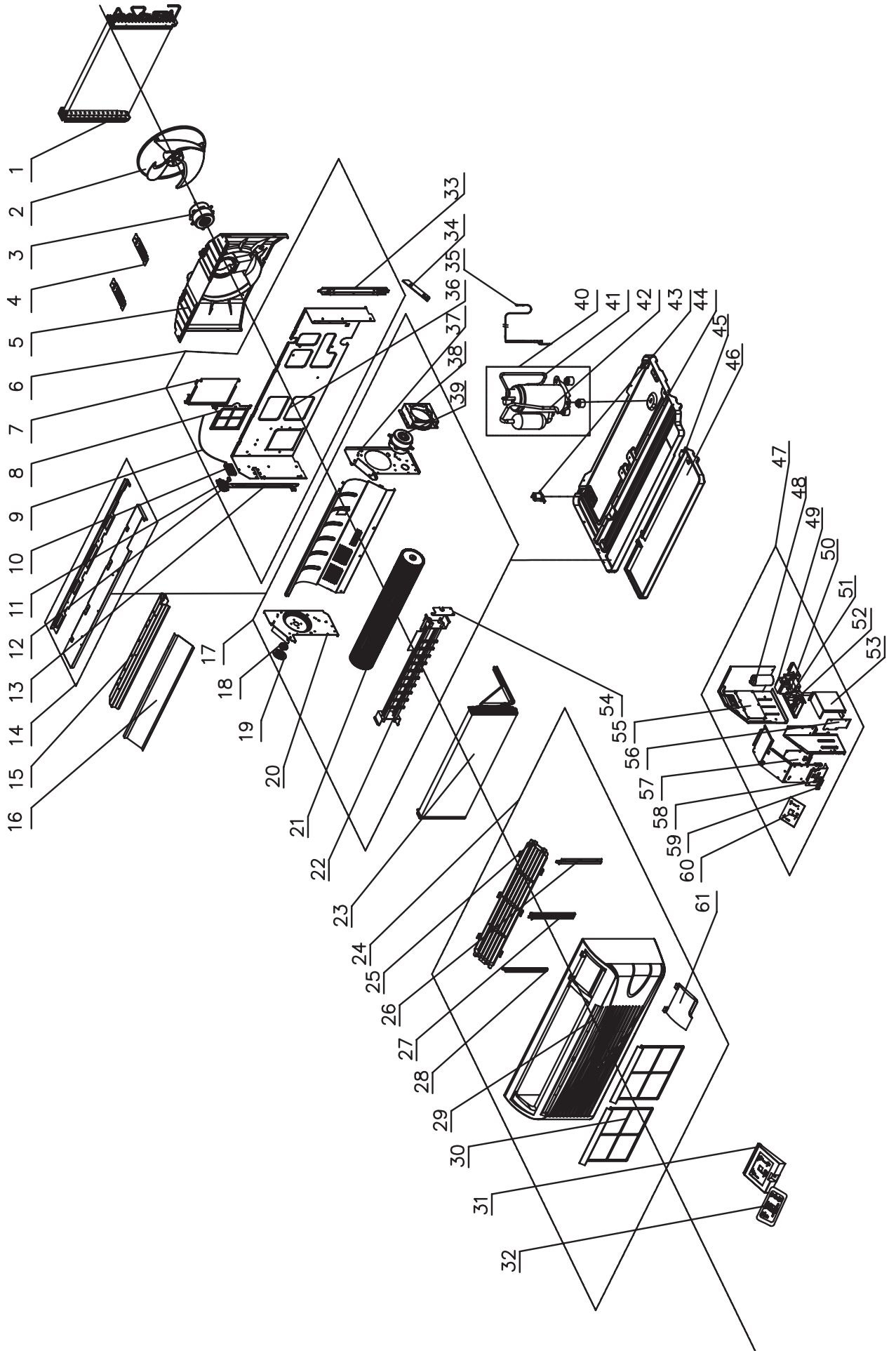


12,000 BTUH HEAT/COOL 265V
Model Number: PTAC-GAE12AB-P
Gree Engineering Number: GAE12AB-P3RNB1A

Ref No.	Part Number	Part Description	Qty
1	01101809	Condenser Coil	1
2	10331004	Outdoor Axial Flow Fan Blade	1
3	150110342	Outdoor Fan Motor	1
4	01381004	Shroud Support Bracket	2
5	10371004	Condenser Shroud	1
6	01231050	Partition Wall Sub Assy	1
7	01441008	Outdoor Air Vent Door Sub-Assy	1
8	11121213	Outdoor Air Vent Filter	1
9	02121014	Outdoor Air Vent Door Cable	1
10	26231155	Lower Vent Lever Housing	1
11	26231153	Outdoor Air Vent Lever	1
12	26231154	Upper Vent Lever Housing	1
13	01701015	Outer Support Side Angle (left)	1
14	01251013	Top Cover Plate Sub-Assy	1
15	02121010P	Discharge Air Deck	1
16	01471007	Discharge Air Screen	1
17	0144100905	Indoor Air Section Sub-Assy	1
18	26151139	Blower Wheel Bearing Housing	1
19	02111010	Blower Wheel Bearing	1
20	02121008P	Indoor Side Wall (left)	1
21	10351002	Indoor Blower Wheel/Cross Flow Fan	1
22	3200102601	Electric Heater Assy	1
23	01001285	Evaporator Coil	1
24	20001390	Front Panel Sub-Assy	1
25	22411153	Discharge Air Grille	1
26	26111139	Indoor Air Filter Supports (right)	1
27	26111140	Indoor Air Filter Supports (center)	1
28	26111141	Indoor Air Filter Supports (left)	1
29	20001386	Front Panel (only)	1
30	11121212	Indoor Air Filter	2
31	20161239	Control Escutcheon Plate	1

Ref No.	Part Number	Part Description	Qty
32	63061121	Membrane/Keypad	1
33	01701016	Outer Support Side Angle (right)	1
34	01361008P	Baffle Plate	1
35	03001139	Capillary Assy	1
36	01231041P	Partition Wall	1
37	02121009P	Indoor Side Wall (right)	1
38	01701014P	Motor Support Sub-Assy	1
39	1501180205	Indoor Fan Motor	1
40	00101054	Compressor and fittings	1
41	03611826	Discharge Tube	1
42	03621831	Suction Tube	1
43	07100164	Condensate Drain Valve	1
44	0120102604P	Chassis Sub-Assy	1
45	12411904	Foam Condensate Tray	1
46	02121012	Heat Insulation Plate	1
47	01401429	Control Box Assy	1
48	33000017	Capacitor	
49	43110269	Transformer	1
50	33010026	Capacitor CBB61 2.5uF/450V	1
51	33010020	Capacitor	1
52	42011103	Terminal Board 2-8	2
53	01411050	Junction Box	1
54	02111009	Heater Wiring Plate	1
55	30032021	Main Control Circuit Board 1	1
56	01251015	Junction Box Plate	1
57	30032023	Main Relay/Power Circuit Board 2	1
58	42010037	Connector 5EHDV-02P	1
59	42010039S	Connector 5EHDV-07P	1
60	30542007	PCB	1
61	20161238	Remote Board	1

15,000 BTUH HEAT/COOL 265V
Model Number: PTAC-GAE15AB-P

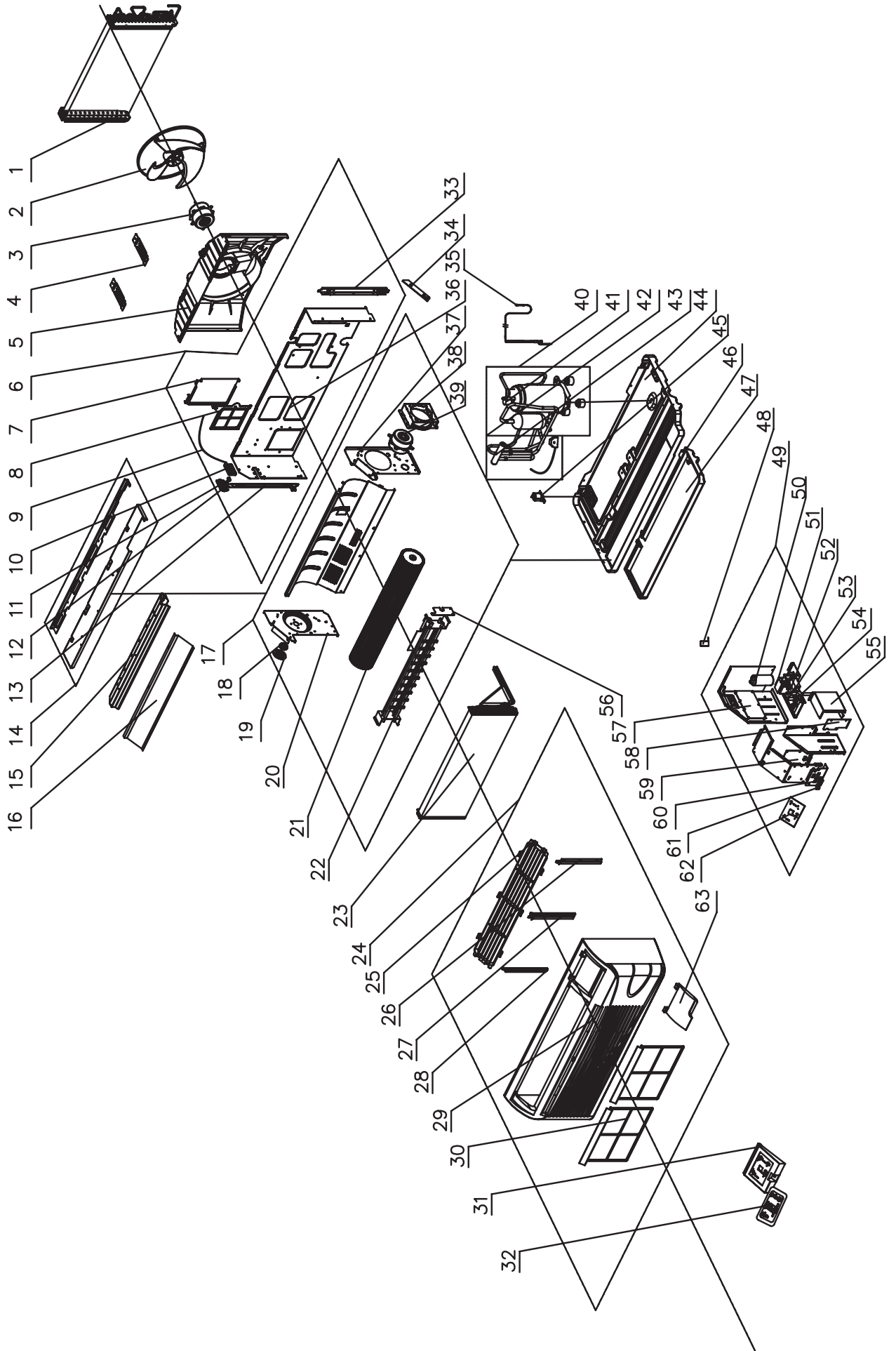


15,000 BTUH HEAT/COOL 265V
Model Number: PTAC-GAE15AB-P
Gree Engineering Number: GAE15AB-P3RNB1A

Ref No.	Part Number	Part Description	Qty
1	01101191	Condenser Coil	1
2	10331004	Outdoor Axial Flow Fan Blade	1
3	150110342	Outdoor Fan Motor	1
4	01381004	Shroud Support Bracket	2
5	10371004	Condenser Shroud	1
6	01231050	Partition Wall Sub Assy	1
7	01441008	Outdoor Air Vent Door Sub-Assy	1
8	11121213	Outdoor Air Vent Filter	1
9	02121014	Outdoor Air Vent Door Cable	1
10	26231155	Lower Vent Lever Housing	1
11	26231153	Outdoor Air Vent Lever	1
12	26231154	Upper Vent Lever Housing	1
13	01701015	Outer Support Side Angle (left)	1
14	01251013	Top Cover Plate Sub-Assy	1
15	02121010P	Discharge Air Deck	1
16	01471007	Discharge Air Screen	1
17	014410905	Indoor Air Section Sub-Assy	1
18	26151139	Blower Wheel Bearing Housing	1
19	02111010	Blower Wheel Bearing	1
20	02121008P	Indoor Side Wall (left)	1
21	10351002	Indoor Blower Wheel/Cross Flow Fan	1
22	3200102601	Electric Heater Assy	1
23	01001285	Evaporator Coil	1
24	20001390	Front Panel Sub-Assy	1
25	22411153	Discharge Air Grille	1
26	26111139	Indoor Air Filter Supports (right)	1
27	26111140	Indoor Air Filter Supports (center)	1
28	26111141	Indoor Air Filter Supports (left)	1
29	20001386	Front Panel (only)	1
30	11121212	Indoor Air Filter	2
31	20161239	Control Escutcheon Plate	1

Ref No.	Part Number	Part Description	Qty
32	63061121	Membrane/Keypad	1
33	01701016	Outer Support Side Angle (right)	1
34	01361008P	Baffle Plate	1
35	03001341	Capillary Assy	1
36	01231041P	Partition Wall	1
37	02121009P	Indoor Side Wall (right)	1
38	01701014P	Motor Support Sub-Assy	1
39	1501180205	Indoor Fan Motor	1
40	00101091	Compressor and fittings	1
41	03611432	Discharge Tube	1
42	03621354	Suction Tube	1
43	07100164	Condensate Drain Valve	1
44	01201026P	Chassis Assy	1
45	12411904	Foam Condensate Tray	1
46	02121012	Heat Insulation Plate	1
47	01401913	Control Box Assy	1
48	33000017	Capacitor	1
49	43110269	Transformer	1
50	33010026	Capacitor CBB61 2.5uF/450V	1
51	33010020	Capacitor	1
52	42011103	Terminal Board 2-8	2
53	01411050	Junction Box	1
54	02111009	Heater Wiring Plate	1
55	30032021	Main Control Circuit Board 1	1
56	01251015	Junction Box Plate	1
57	30032023	Main Relay/Power Circuit Board 2	1
58	42010037	Connector 5EHDV-02P	1
59	42010039S	Connector 5EHDV-07P	1
60	30542007	PCB	1
61	20161238	Remote Board	1

7,000 BTUH HEAT PUMP 208/230V
Model Number: PTAC-GAA07AB-D

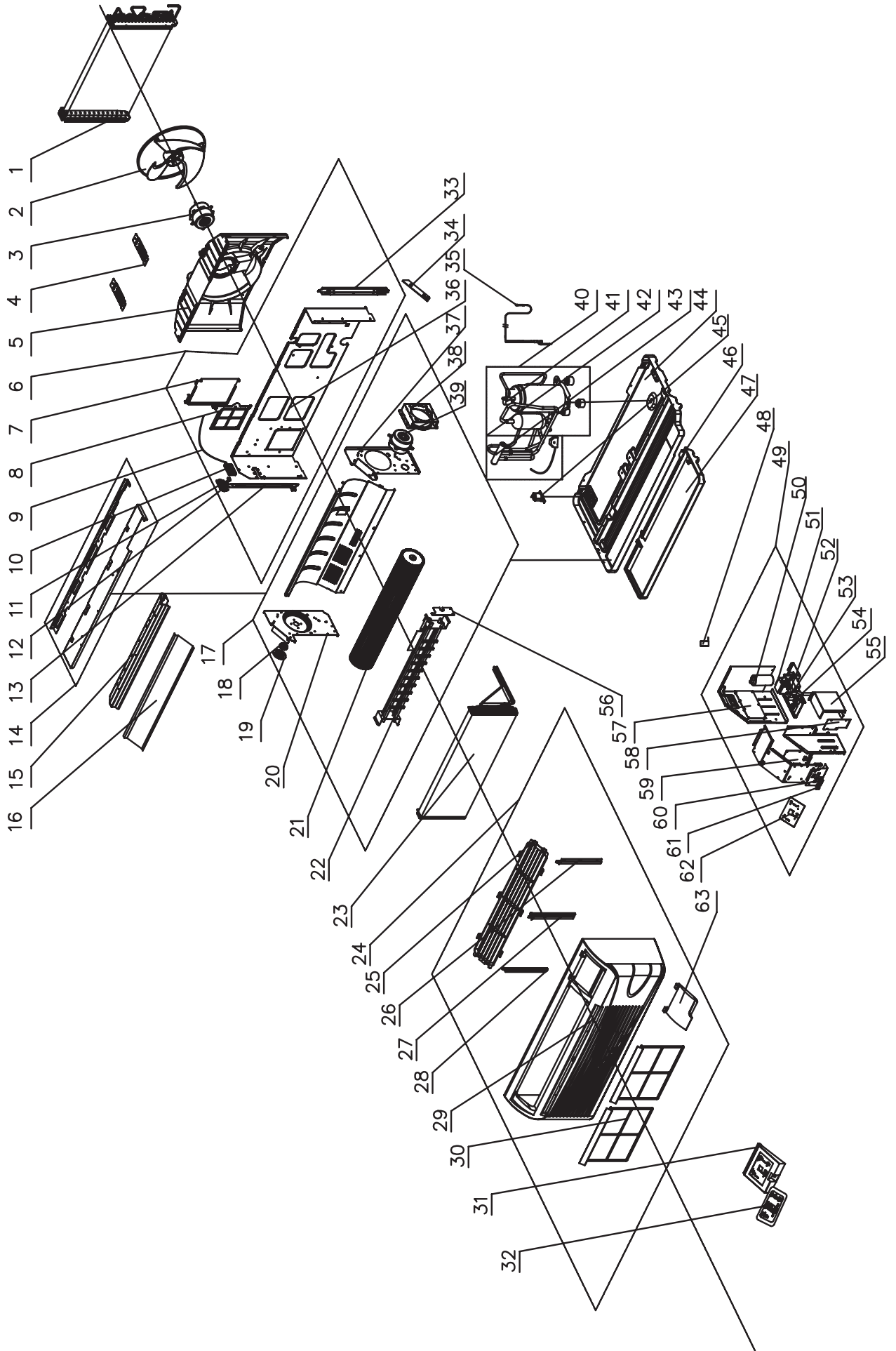


7,000 BTUH HEAT PUMP 208/230V
Model Number: PTAC-GAA07AB-D
Gree Engineering Number: GAA07AB-D3RNB1A

Ref No.	Part Number	Part Description	Qty
1	01101272	Condenser Coil	1
2	10331004	Outdoor Axial Flow Fan Blade	1
3	150110343	Outdoor Fan Motor	1
4	01381004	Shroud Support Bracket	1
5	10371004	Condenser Shroud	1
6	01231050	Partition Wall Sub Assy	1
7	01441008	Outdoor Air Vent Door Sub-Assy	1
8	11121213	Outdoor Air Vent Filter	1
9	02121014	Outdoor Air Vent Door Cable	1
10	26231155	Lower Vent Lever Housing	1
11	26231153	Outdoor Air Vent Lever	1
12	26231154	Upper Vent Lever Housing	1
13	01701015	Outer Support Side Angle (left)	1
14	01251013	Top Cover Plate Sub-Assy	1
15	02121010P	Discharge Air Deck	1
16	01471007	Discharge Air Screen	1
17	01221012	Indoor Air Section Sub-Assy	1
18	26151139	Blower Wheel Bearing Housing	1
19	02111010	Blower Wheel Bearing	1
20	02121008P	Indoor Side Wall (left)	1
21	10351002	Indoor Blower Wheel/Cross Flow Fan	1
22	3200102602	Electric Heater Assy	1
23	01001066	Evaporator Coil	1
24	20001390	Front Panel Sub-Assy	1
25	22411153	Discharge Air Grille	1
26	26111139	Indoor Air Filter Supports (right)	1
27	26111140	Indoor Air Filter Supports (center)	1
28	26111141	Indoor Air Filter Supports (left)	1
29	20001386	Front Panel (only)	1
30	11121212	Indoor Air Filter	2
31	20161239	Control Escutcheon Plate	1
32	63061121	Membrane/Keypad	1

Ref No.	Part Number	Part Description	Qty
33	01701016	Outer Support Side Angle (right)	1
34	03001424	Capillary Assy	1
35	01231041P	Partition Wall	1
36	02121009P	Indoor Side Wall (right)	1
37	01701014P	Indoor Fan Motor Support	1
38	1501180202	Indoor Fan Motor	1
39	00101061	Compressor and fittings	1
40	none	Overload Protector	0
41	03021109	4-way Valve	1
42	430004022	4-Way Valve	1
43	0120102601P	Chassis Assy	1
44	07100164	Condensate Drain Valve	1
45	12411904	Foam Condensate Tray	1
46	02121012	Heat Insulation Plate	1
47	4300040042	4-way Valve Fittings	1
48	01401255	Control Box Assy	1
49	33010045	Capacitor CBB65 15uF/450V	1
50	43110270	Transformer	1
51	33010089	Capacitor CBB611A 1uF/450V	1
52	33010025	Capacitor	1
53	42011103	Terminal Board 2-8	2
54	01411050	Junction Box	1
55	02111009	Heater Wiring block board	1
56	30032020	Main Control Circuit Board 1	1
57	01251015	Junction Box Plate	1
58	30032022	Main Relay/Power Circuit Board 2	1
59	42010037	Connector 5EHDV-02P	1
60	42010039S	Connector 5EHDV-07P	1
61	30542007	PCB	1
62	01361008P	Baffle Plate	1
63	20161238	Remote Board	1

9,000 BTUH HEAT PUMP 208/230V
Model Number: PTAC-GAA09AB-D

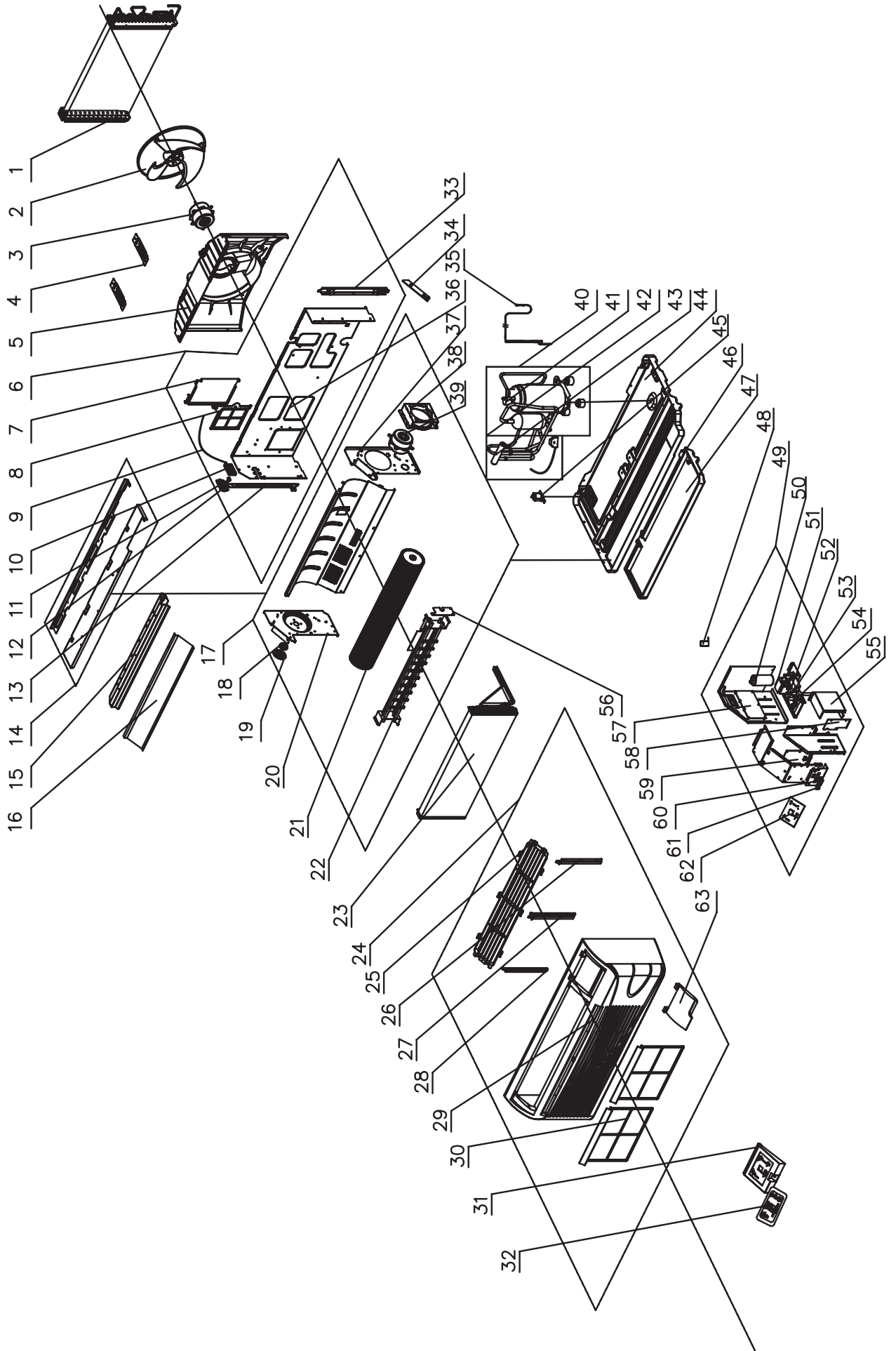


9,000 BTUH HEAT PUMP 208/230V
Model Number: PTAC-GAA09AB-D
Gree Engineering Number: GAA09AB-D3RNB1A

Ref No.	Part Number	Part Description	Qty
1	01101809	Condenser Coil	1
2	10331004	Outdoor Axial Flow Fan Blade	1
3	150110343	Outdoor Fan Motor	1
4	01381004	Shroud Support Bracket	1
5	10371004	Condenser Shroud	1
6	01231050	Partition Wall Sub Assy	2
7	01441008	Outdoor Air Vent Door Sub-Assy	1
8	11121213	Outdoor Air Vent Filter	1
9	02121014	Outdoor Air Vent Door Cable	1
10	26231155	Lower Vent Lever Housing	1
11	26231153	Outdoor Air Vent Lever	1
12	26231154	Upper Vent Lever Housing	1
13	01701015	Outer Support Side Angle (left)	1
14	01251013	Top Cover Plate Sub-Assy	1
15	02121010P	Discharge Air Deck	1
16	01471007	Discharge Air Screen	1
17	01221011	Indoor Air Section Sub-Assy	1
18	26151139	Blower Wheel Bearing Housing	1
19	02111010	Blower Wheel Bearing	1
20	02121008P	Indoor Side Wall (left)	1
21	10351002	Indoor Blower Wheel/Cross Flow Fan	1
22	3200102602	Electric Heater Assy	1
23	01001284	Evaporator Coil	1
24	20001390	Front Panel Sub-Assy	1
25	22411153	Discharge Air Grille	1
26	26111139	Indoor Air Filter Supports (right)	1
27	26111140	Indoor Air Filter Supports (center)	1
28	26111141	Indoor Air Filter Supports (left)	1
29	20001386	Front Panel (only)	1
30	11121212	Indoor Air Filter	1
31	20161239	Control Escutcheon Plate	1
32	63061121	Membrane/Keypad	2

Ref No.	Part Number	Part Description	Qty
33	01701016	Outer Support Side Angle (right)	1
34	03001824	Capillary Assy	1
35	01231041P	Partition Wall	1
36	02121009P	Indoor Side Wall (right)	1
37	01701014P	Indoor Fan Motor Support	1
38	15011802	Indoor Fan Motor	1
39	00101051	Compressor and fittings	1
40	none	Overload Protector	1
41	03021505	4-way Valve	0
42	430004022	4-Way Valve	1
43	0120102604P	Chassis Sub-Assy	1
44	07100164	Condensate Drain Valve	1
45	12411904	Foam Condensate Tray	1
46	02121012	Heat Insulation Plate	1
47	4300040042	4-way Valve Fittings	1
48	01401333	Control Box Assy	1
49	33000017	Capacitor	1
50	43110270	Transformer	1
51	33010020	Capacitor	1
52	33010025	Capacitor	1
53	42011103	Terminal Board 2-8	1
54	01411050	Junction Box	2
55	02111009	Heater Wiring Plate	1
56	30032020	Main Control Circuit Board 1	1
57	01251015	Junction Box Plate	1
58	30032022	Main Relay/Power Circuit Board 2	1
59	42010037	Connector 5EHDV-02P	1
60	42010039S	Connector 5EHDV-07P	1
61	30542007	PCB	1
62	01361008P	Baffle Plate	1
63	20161238	Remote Board	1

12,000 BTUH HEAT PUMP 208/230V
Model Number: PTAC-GAA12AB-D

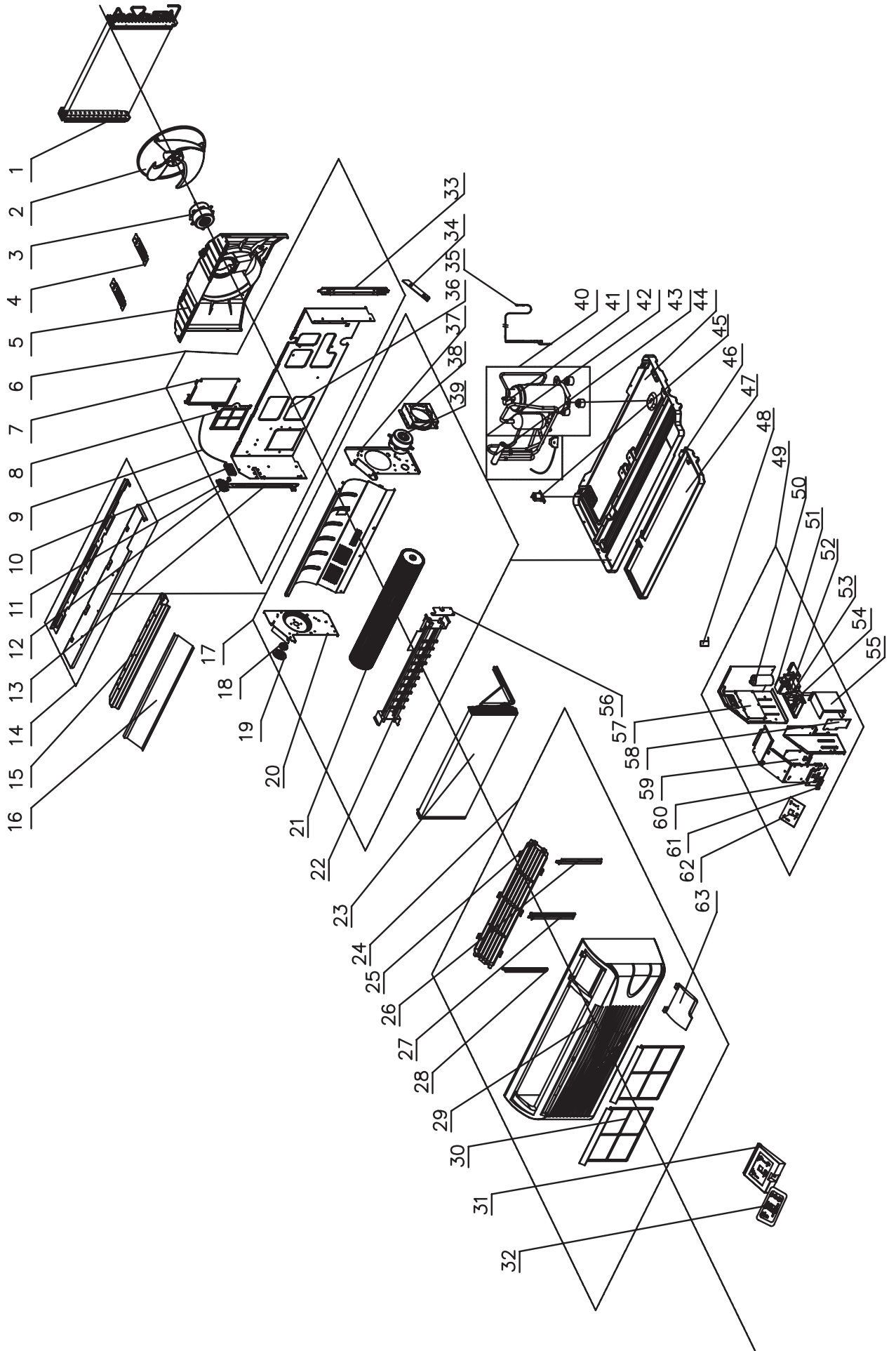


12,000 BTUH HEAT/ PUMP 208/230V
Model Number: PTAC-GAA12AB-D
Gree Engineering Number: GAA12AB-D3RNB1A

Ref No.	Part Number	Part Description	Qty
1	01101809	Condenser Coil	1
2	10331004	Outdoor Axial Flow Fan Blade	1
3	15011047	Outdoor Fan Motor	1
4	01381004	Shroud Support Bracket	2
5	10371004	Condenser Shroud	1
6	01231050	Partition Wall Sub Assy	1
7	01441008	Outdoor Air Vent Door Sub-Assy	1
8	11121213	Outdoor Air Vent Filter	1
9	02121014	Outdoor Air Vent Door Cable	1
10	26231155	Lower Vent Lever Housing	1
11	26231153	Outdoor Air Vent Lever	1
12	26231154	Upper Vent Lever Housing	1
13	01701015	Outer Support Side Angle (left)	1
14	01251013	Top Cover Plate Sub-Assy	1
15	02121010P	Discharge Air Deck	1
16	01471007	Discharge Air Screen	1
17	0144100904	Indoor Air Section Sub-Assy	1
18	26151139	Blower Wheel Bearing Housing	1
19	02111010	Blower Wheel Bearing	1
20	02121008P	Indoor Side Wall (left)	1
21	10351002	Indoor Blower Wheel/Cross Flow Fan	1
22	32001026	Electric Heater Assy	1
23	01001285	Evaporator Coil	1
24	20001390	Front Panel Sub-Assy	1
25	22411153	Discharge Air Grille	1
26	26111139	Indoor Air Filter Supports (right)	1
27	26111140	Indoor Air Filter Supports (center)	1
28	26111141	Indoor Air Filter Supports (left)	1
29	20001386	Front Panel (only)	1
30	11121212	Indoor Air Filter	2
31	20161239	Control Escutcheon Plate	1
32	63061121	Membrane/Keypad	1

Ref No.	Part Number	Part Description	Qty
33	01701016	Outer Support Side Angle (right)	1
34	03001139	Capillary Assy	1
35	01231041P	Partition Wall	1
36	02121009P	Indoor Side Wall (right)	1
37	01701014P	Indoor Fan Motor Support	1
38	1501180203	Indoor Fan Motor	1
39	00101053	Compressor and fittings	1
40	none	Overload Protector	0
41	03021012	4-way Valve	1
42	430004032	4-way Valve	1
43	0120102604P	Chassis Sub-Assy	1
44	07100164	Condensate Drain Valve	1
45	12411904	Foam Condensate Tray	1
46	02121012	Heat Insulation Plate	1
47	4300040042	4-way Valve Fittings	1
48	01401430	Control Box Assy	1
49	33000017	Capacitor	1
50	43110270	Transformer	1
51	33010026	Capacitor CBB61 2.5uF/450V	1
52	33010089	Capacitor CBB611A 1uF/450V	1
53	42011103	Terminal Board 2-8	2
54	01411050	Junction Box	1
55	02111009	Heater Wiring Plate	1
56	30032020	Main Control Circuit Board 1	1
57	01251015	Junction Box Plate	1
58	30032022	Main Relay/Power Circuit Board 2	1
59	42010037	Connector 5EHDV-02P	1
60	42010039S	Connector 5EHDV-07P	1
61	30542007	PCB	1
62	01361008P	Baffle Plate	1
63	20161238	Remote Board	1

15,000 BTUH HEAT PUMP 208/230V
Model Number: PTAC-GAA15AB-D

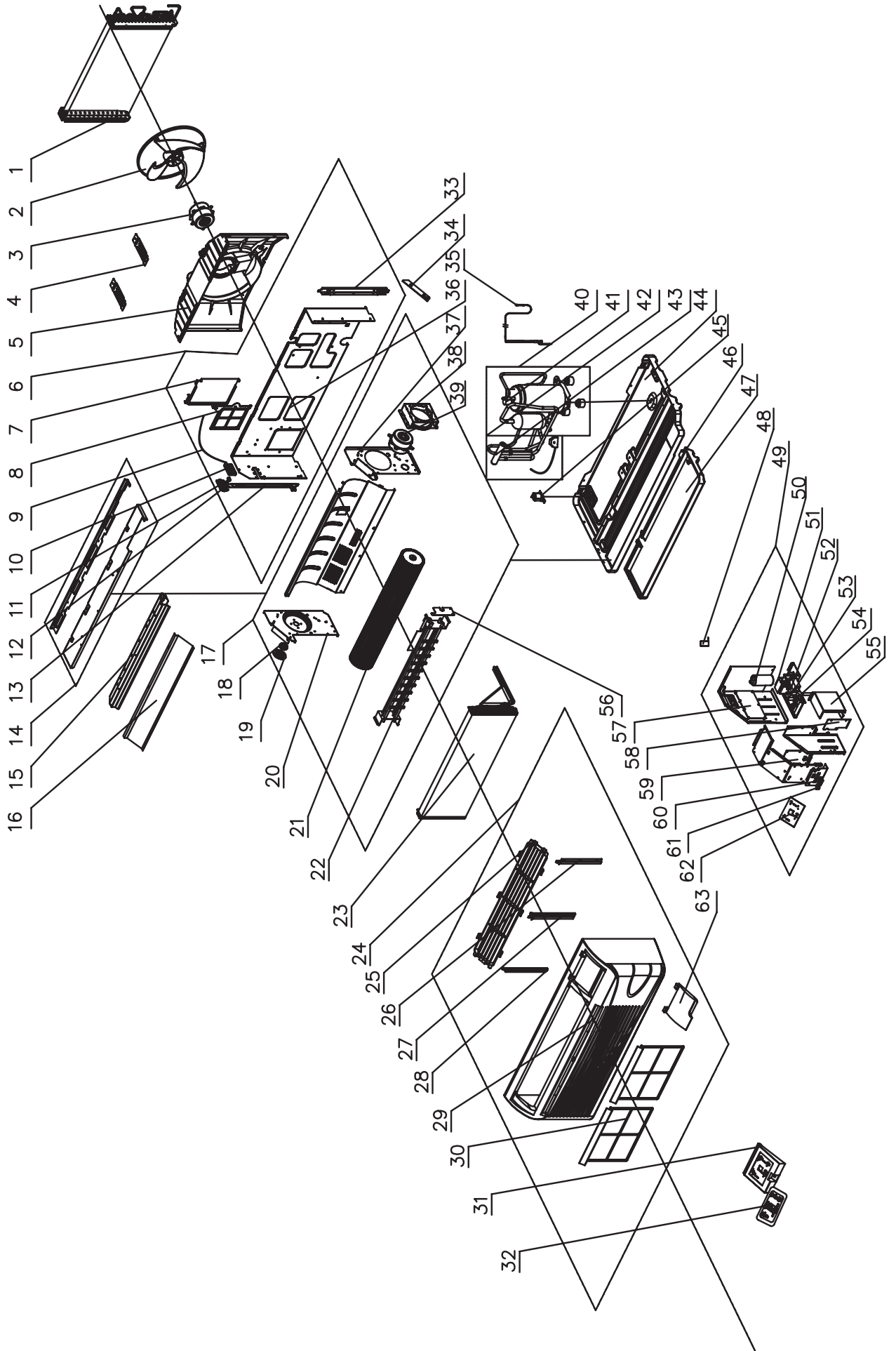


15,000 BTUH HEAT PUMP 208/230V
Model Number: PTAC-GAA15AB-D
Gree Engineering Number: GAA15AB-D3RNB1A

Ref No.	Part Number	Part Description	Qty
1	01101191	Condenser Coil	1
2	10331004	Outdoor Axial Flow Fan Blade	1
3	15011048	Outdoor Fan Motor	1
4	01381004	Shroud Support Bracket	2
5	10371004	Condenser Should	1
6	01231050	Partition Wall Sub Assy	1
7	01441008	Outdoor Air Vent Door Sub-Assy	1
8	11121213	Outdoor Air Vent Filter	1
9	02121014	Outdoor Air Vent Door Cable	1
10	26231155	Lower Vent Lever Housing	1
11	26231153	Outdoor Air Vent Lever	1
12	26231154	Upper Vent Lever Housing	1
13	01701015	Outer Support Side Angle (left)	1
14	01251013	Top Cover Plate Sub-Assy	1
15	02121010P	Discharge Air Deck	1
16	01471007	Discharge Air Screen	1
17	0144100904	Indoor Air Section Sub-Assy	1
18	26151139	Blower Wheel Bearing Housing	1
19	02111010	Blower Wheel Bearing	1
20	02121008P	Indoor Side Wall (left)	1
21	10351002	Indoor Blower Wheel/Cross Flow Fan	1
22	32001026	Electric Heater Assy	1
23	01001285	Evaporator Coil	1
24	20001390	Front Panel Sub-Assy	1
25	22411153	Discharge Air Grille	1
26	26111139	Indoor Air Filter Supports (right)	1
27	26111140	Indoor Air Filter Supports (center)	1
28	26111141	Indoor Air Filter Supports (left)	1
29	20001386	Front Panel (only)	1
30	11121212	Indoor Air Filter	2
31	20161239	Control Escutcheon Plate	1
32	63061121	Membrane/Keypad	1

Ref No.	Part Number	Part Description	Qty
33	01701016	Outer Support Side Angle (right)	1
34	03001434	Capillary Assy	1
35	01231041P	Partition Wall	1
36	02121009P	Indoor Side Wall (right)	1
37	01701014P	Indoor Fan Motor Support	1
38	1501180203	Indoor Fan Motor	1
39	00101085	Compressor and fittings	1
40	none	Overload Protector	0
41	03021187	4-way Valve	1
42	430004032	4-way Valve	1
43	01201026P	Chassis Assy	1
44	07100164	Condensate Drain Valve	1
45	12411904	Foam Condensate Tray	1
46	02121012	Heat Insulation Plate	1
47	4300040042	4-way Valve Fittings	1
48	01401899	Control Box Assy	1
49	33000045	Capacitor 40uF/450V φ50X90	1
50	43110270	Transformer	1
51	33010026	Capacitor CBB61 2.5uF/450V	1
52	33010089	Capacitor CBB61A 1uF/450V	1
53	42011103	Terminal Board 2-8	2
54	01411050	Junction Box	1
55	02111009	Heater Wiring Plate	1
56	30032020	Main Control Circuit Board 1	1
57	01251015	Junction Box Plate	1
58	30032022	Main Relay/Power Circuit Board 2	1
59	42010037	Connector 5EHDV-02P	1
60	42010039S	Connector 5EHDV-07P	1
61	30542007	PCB	1
62	01361008P	Baffle Plate	1
63	20161238	Remote Board	1

7,000 BTUH HEAT PUMP 265V
Model Number: PTAC-GAA07AB-P

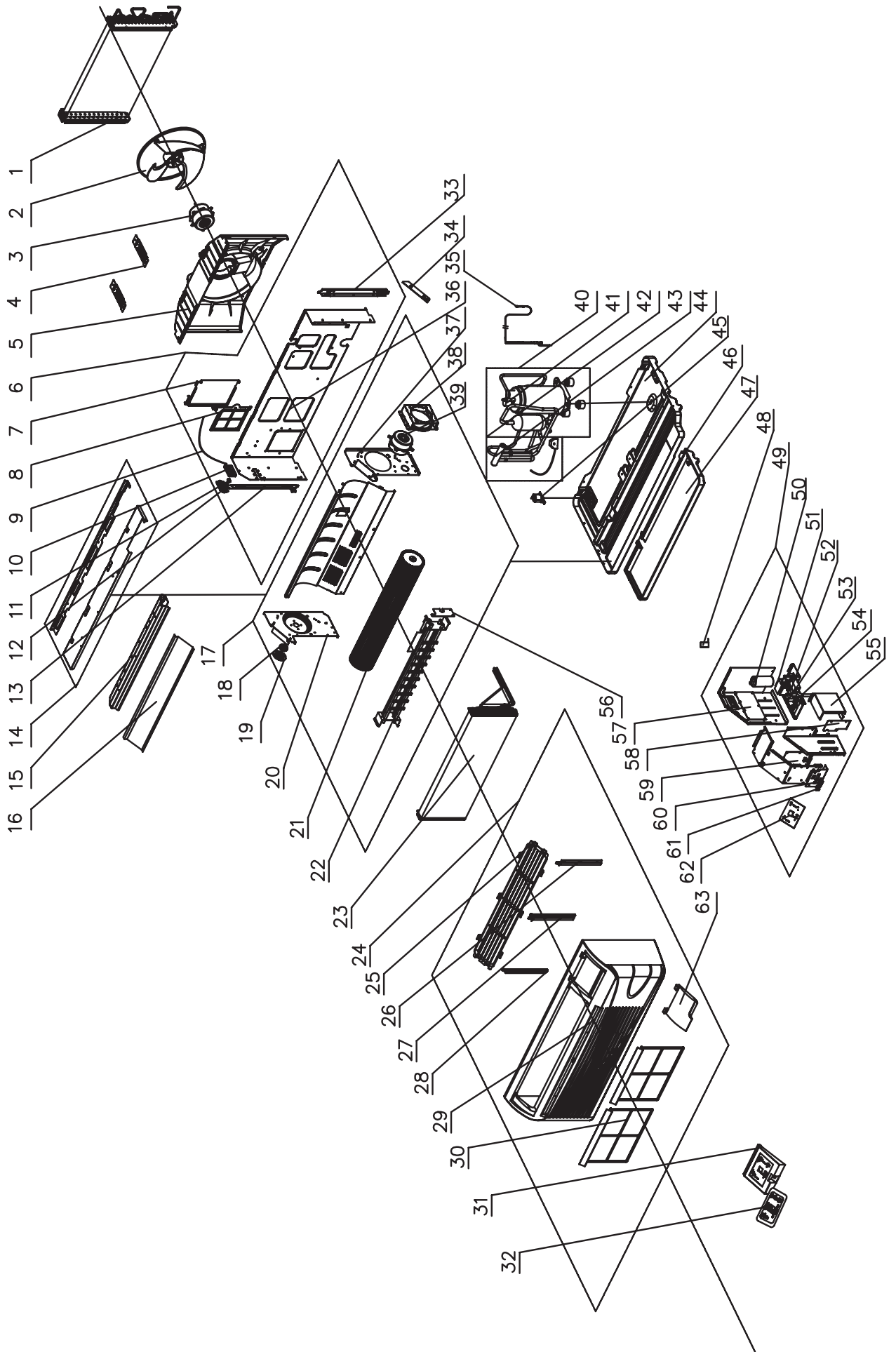


7,000 BTUH HEAT PUMP 265V
Model Number: PTAC-GAA07AB-P
Gree Engineering Number: GAA07AB-P3RNB1A

Ref No.	Part Number	Part Description	Qty
1	01101272	Condenser Coil	1
2	10331004	Outdoor Axial Flow Fan Blade	1
3	1501180204	Outdoor Fan Motor	1
4	01381004	Shroud Support Bracket	2
5	10371004	Condenser Shroud	1
6	01231050	Partition Wall Sub Assy	1
7	01441008	Outdoor Air Vent Door Sub-Assy	1
8	11121213	Outdoor Air Vent Filter	1
9	02121014	Outdoor Air Vent Door Cable	1
10	26231155	Lower Vent Lever Housing	1
11	26231153	Outdoor Air Vent Lever	1
12	26231154	Upper Vent Lever Housing	1
13	01701015	Outer Support Side Angle (left)	1
14	01251013	Top Cover Plate Sub-Assy	1
15	02121010P	Discharge Air Deck	1
16	01471007	Discharge Air Screen	1
17	01221013	Indoor Air Section Sub-Assy	1
18	26151139	Blower Wheel Bearing Housing	1
19	02111010	Blower Wheel Bearing	1
20	02121008P	Indoor Side Wall (left)	1
21	10351002	Indoor Blower Wheel/Cross Flow Fan	1
22	3200102603	Electric Heater Assy	1
23	01001066	Evaporator Coil	1
24	20001390	Front Panel Sub-Assy	1
25	22411153	Discharge Air Grille	1
26	26111139	Indoor Air Filter Supports (right)	1
27	26111140	Indoor Air Filter Supports (center)	1
28	26111141	Indoor Air Filter Supports (left)	1
29	20001386	Front Panel (only)	1
30	11121212	Indoor Air Filter	2
31	20161239	Control Escutcheon Plate	1
32	63061121	Membrane/Keypad	1

Ref No.	Part Number	Part Description	Qty
33	01701016	Outer Support Side Angle (right)	1
34	03001424	Capillary Assy	1
35	01231041P	Partition Wall	1
36	02121009P	Indoor Side Wall (right)	1
37	01701014P	Indoor Fan Motor Support	1
38	150110345	Indoor Fan Motor	1
39	00101060	Compressor and fittings	1
40	none	Overload Protector	0
41	03021109	4-way Valve	1
42	430004022	4-Way Valve	1
43	0120102601P	Chassis Assy	1
44	07100164	Condensate Drain Valve	1
45	12411904	Foam Condensate Tray	1
46	02121012	Heat Insulation Plate	1
47	4300040026	4 Way Valve Fittings	1
48	0140125501	Control Box Assy	1
49	33010045	Capacitor CBB65 15uF/450V	1
50	43110269	Transformer	1
51	33010020	Capacitor	1
52	33010089	Capacitor CBB611A 1uF/450V	1
53	42011103	Terminal Board 2-8	2
54	01411050	Junction Box	1
55	02111009	Heater Wiring Plate	1
56	30032020	Main Control Circuit Board 1	1
57	01251015	Junction Box Plate	1
58	30032023	Main Relay/Power Circuit Board 2	1
59	42010037	Connector 5EHDV-02P	1
60	42010039S	Connector 5EHDV-07P	1
61	30542007	PCB	1
62	01361008P	Baffle Plate	1
63	20161238	Remote Board	1

9,000 BTUH HEAT PUMP 265V
Model Number: PTAC-GAA09AB-P

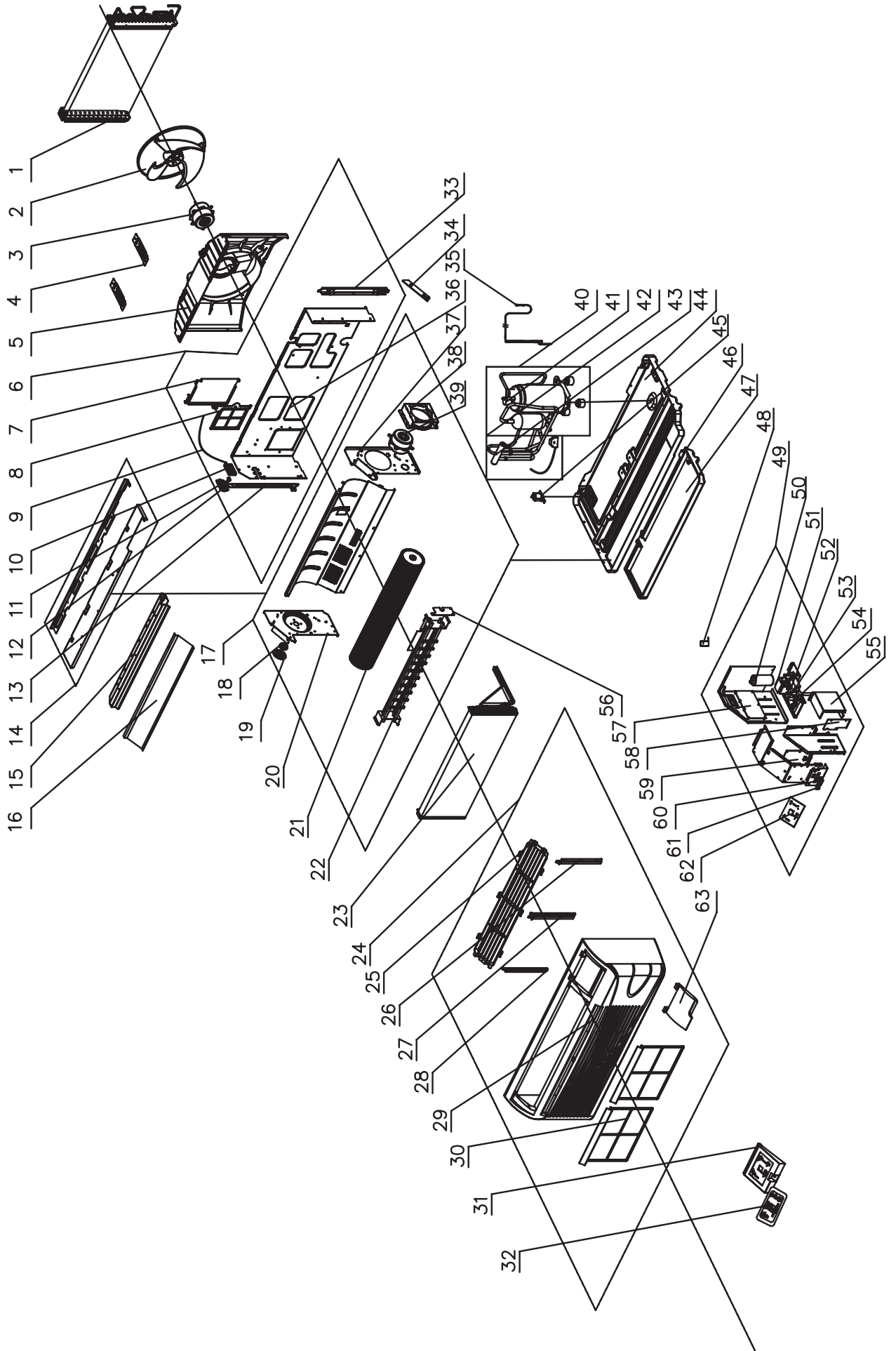


9,000 BTUH HEAT PUMP 265V
Model Number: PTAC-GAA09AB-P
Gree Engineering Number: GAA09AB-P3RNB1A

Ref No.	Part Number	Part Description	Qty
1	01101809	Condenser Coil	1
2	10331004	Outdoor Axial Flow Fan Blade	1
3	150110345	Outdoor Fan Motor	1
4	01381004	Shroud Support Bracket	2
5	10371004	Condenser Shroud	1
6	01231050	Partition Wall Sub Assy	1
7	01441008	Outdoor Air Vent Door Sub-Assy	1
8	11121213	Outdoor Air Vent Filter	1
9	02121014	Outdoor Air Vent Door Cable	1
10	26231155	Lower Vent Lever Housing	1
11	26231153	Outdoor Air Vent Lever	1
12	26231154	Upper Vent Lever Housing	1
13	01701015	Outer Support Side Angle (left)	1
14	01251013	Top Cover Plate Sub-Assy	1
15	02121010P	Discharge Air Deck	1
16	01471007	Discharge Air Screen	1
17	0122101101	Indoor Air Section Sub-Assy	1
18	26151139	Blower Wheel Bearing Housing	1
19	02111010	Blower Wheel Bearing	1
20	02121008P	Indoor Side Wall (left)	1
21	10351002	Indoor Blower Wheel/Cross Flow Fan	1
22	3200102603	Electric Heater Assy	1
23	01001284	Evaporator Coil	1
24	20001390	Front Panel Sub-Assy	1
25	22411153	Discharge Air Grille	1
26	26111139	Indoor Air Filter Supports (right)	1
27	26111140	Indoor Air Filter Supports (center)	1
28	26111141	Indoor Air Filter Supports (left)	1
29	20001386	Front Panel (only)	1
30	11121212	Indoor Air Filter	2
31	20161239	Control Escutcheon Plate	1
32	63061121	Membrane/Keypad	1

Ref No.	Part Number	Part Description	Qty
33	01701016	Outer Support Side Angle (right)	1
34	03001824	Capillary Assy	1
35	01231041P	Partition Wall	1
36	02121009P	Indoor Side Wall (right)	1
37	01701014P	Indoor Fan Motor Support	1
38	1501180201	Indoor Fan Motor	1
39	00101052	Compressor and fittings	1
40	none	Overload Protector	0
41	03021505	4-way Valve	1
42	430004022	4-Way Valve	1
43	0120102604P	Chassis Sub-Assy	1
44	07100164	Condensate Drain Valve	1
45	12411904	Foam Condensate Tray	1
46	02121012	Heat Insulation Plate	1
47	4300040026	4 Way Valve Fittings	1
48	01401332	Control Box Assy	1
49	33010045	Capacitor CBB65 15uF/450V	1
50	43110269	Transformer	1
51	33010020	Capacitor	1
52	33010020	Capacitor	1
53	42011103	Terminal Board 2-8	2
54	01411050	Junction Box	1
55	02111009	Heater Wiring Plate	1
56	30032020	Main Control Circuit Board 1	1
57	01251015	Junction Box Plate	1
58	30032023	Main Relay/Power Circuit Board 2	1
59	42010037	Connector 5EHDV-02P	1
60	42010039S	Connector 5EHDV-07P	1
61	30542007	PCB	1
62	01361008P	Baffle Plate	1
63	20161238	Remote Board	1

12,000 BTUH HEAT PUMP 265V
Model Number: PTAC-GAA12AB-P

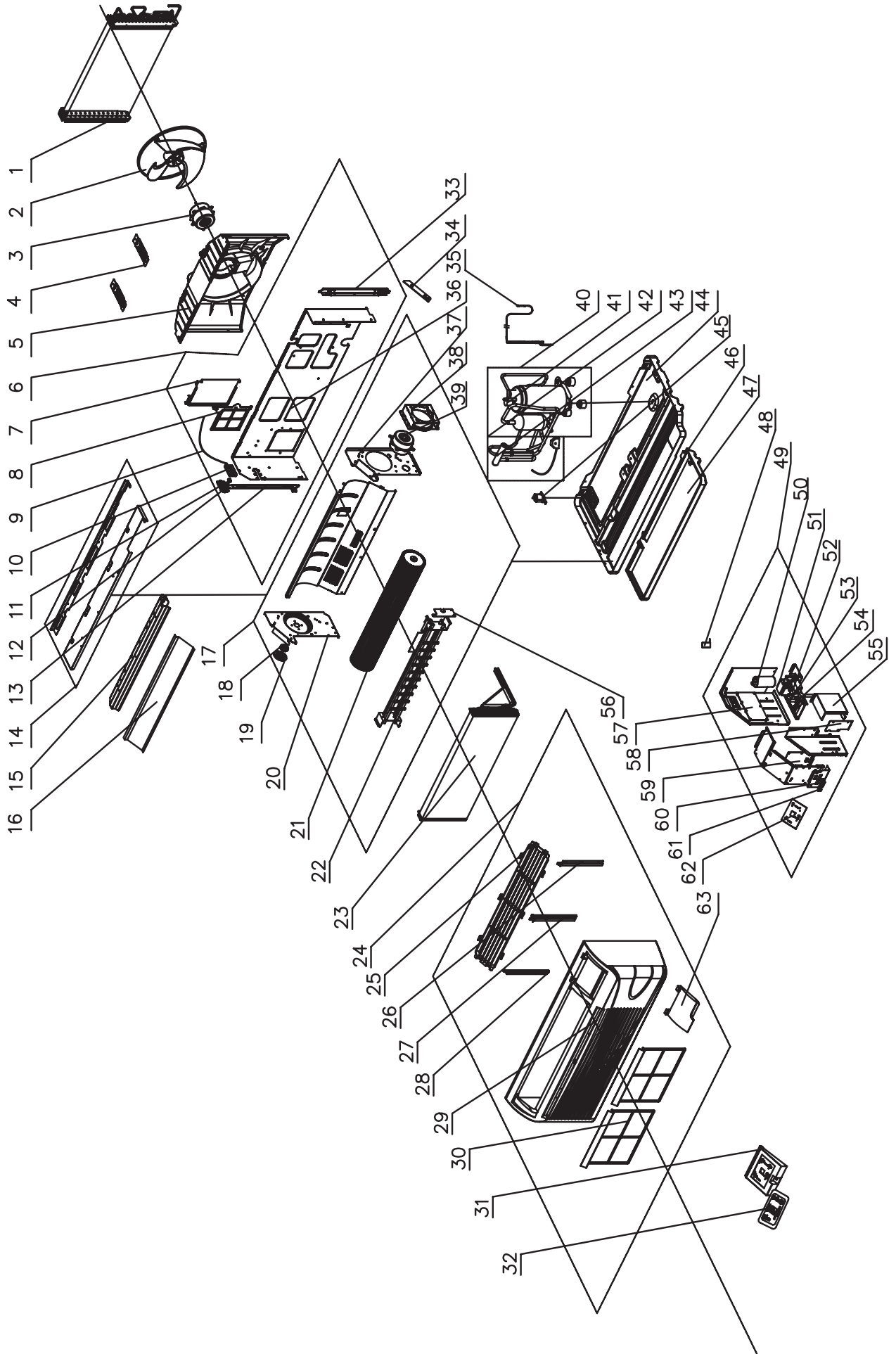


12,000 BTUH HEAT PUMP 265V
Model Number: PTAC-GAA12AB-P
Gree Engineering Number: GAA12AB-P3RNB1A

Ref No.	Part Number	Part Description	Qty
1	01101809	Condenser Coil	1
2	10331004	Outdoor Axial Flow Fan Blade	1
3	150110342	Outdoor Fan Motor	1
4	01381004	Shroud Support Bracket	2
5	10371004	Condenser Shroud	1
6	01231050	Partition Wall Sub Assy	1
7	01441008	Outdoor Air Vent Door Sub-Assy	1
8	11121213	Outdoor Air Vent Filter	1
9	02121014	Outdoor Air Vent Door Cable	1
10	26231155	Lower Vent Lever Housing	1
11	26231153	Outdoor Air Vent Lever	1
12	26231154	Upper Vent Lever Housing	1
13	01701015	Outer Support Side Angle (left)	1
14	01251013	Top Cover Plate Sub-Assy	1
15	02121010P	Discharge Air Deck	1
16	01471007	Discharge Air Screen	1
17	0144100905	Indoor Air Section Sub-Assy	1
18	26151139	Blower Wheel Bearing Housing	1
19	02111010	Blower Wheel Bearing	1
20	02121008P	Indoor Side Wall (left)	1
21	10351002	Indoor Blower Wheel/Cross Flow Fan	1
22	3200102601	Electric Heater Assy	1
23	01001285	Evaporator Coil	1
24	20001390	Front Panel Sub-Assy	1
25	22411153	Discharge Air Grille	1
26	26111139	Indoor Air Filter Supports (right)	1
27	26111140	Indoor Air Filter Supports (center)	1
28	26111141	Indoor Air Filter Supports (left)	1
29	20001386	Front Panel (only)	1
30	11121212	Indoor Air Filter	2
31	20161239	Control Escutcheon Plate	1
32	63061121	Membrane/Keypad	1

Ref No.	Part Number	Part Description	Qty
33	01701016	Outer Support Side Angle (right)	1
34	03001139	Capillary Assy	1
35	01231041P	Partition Wall	1
36	02121009P	Indoor Side Wall (right)	1
37	01701014P	Indoor Fan Motor Support	1
38	1501180205	Indoor Fan Motor	1
39	00101054	Compressor and fittings	1
40	none	Overload Protector	0
41	03021012	4-way Valve sub Assy	1
42	430004032	4-way Valve	1
43	0120102604P	Chassis Assy	1
44	07100164	Condensate Drain Valve	1
45	12411904	Foam Condensate Tray	1
46	02121012	Heat Insulation Plate	1
47	4300040026	4 Way Valve Fittings	1
48	01401431	Control Box Assy	1
49	33000017	Capacitor	1
50	43110269	Transformer	1
51	33010020	Capacitor	1
52	33010026	Capacitor	1
53	42011103	Terminal Board 2-8	2
54	01411050	Junction Box	1
55	02111009	Heater Wiring Plate	1
56	30032020	Main Control Circuit Board 1	1
57	01251015	Junction Box Plate	1
58	30032023	Main Relay/Power Circuit Board 2	1
59	42010037	Connector 5EHDV-02P	1
60	42010039S	Connector 5EHDV-07P	1
61	30542007	PCB	1
62	01361008P	Baffle Plate	1
63	20161238	Remote Board	1

15,000 BTUH HEAT PUMP 265V
Model Number: PTAC-GAA15AB-P



15,000 BTUH HEAT PUMP 265V
Model Number: PTAC-GAA15AB-P
Gree Engineering Number: GAA15AB-P3RNB1A

Ref No.	Part Number	Part Description	Qty
1	01101191	Condenser Coil	1
2	10331004	Outdoor Axial Flow Fan Blade	1
3	150110342	Outdoor Fan Motor	1
4	01381004	Shroud Support Bracket	2
5	10371004	Condenser Shroud	1
6	01231050	Partition Wall Sub Assy	1
7	01441008	Outdoor Air Vent Door Sub-Assy	1
8	11121213	Outdoor Air Vent Filter	1
9	02121014	Outdoor Air Vent Door Cable	1
10	26231155	Lower Vent Lever Housing	1
11	26231153	Outdoor Air Vent Lever	1
12	26231154	Upper Vent Lever Housing	1
13	01701015	Outer Support Side Angle (left)	1
14	01251013	Top Cover Plate Sub-Assy	1
15	02121010P	Discharge Air Deck	1
16	01471007	Discharge Air Screen	1
17	0144100905	Indoor Air Section Sub-Assy	1
18	26151139	Blower Wheel Bearing Housing	1
19	02111010	Blower Wheel Bearing	1
20	02121008P	Indoor Side Wall (left)	1
21	10351002	Indoor Blower Wheel/Cross Flow Fan	1
22	3200102601	Electric Heater Assy	1
23	01001285	Evaporator Coil	1
24	20001390	Front Panel Sub-Assy	1
25	22411153	Discharge Air Grille	1
26	26111139	Indoor Air Filter Supports (right)	1
27	26111140	Indoor Air Filter Supports (center)	1
28	26111141	Indoor Air Filter Supports (left)	1
29	20001386	Front Panel (only)	1
30	11121212	Indoor Air Filter	2
31	20161239	Control Escutcheon Plate	1
32	63061121	Membrane/Keypad	1

Ref No.	Part Number	Part Description	Qty
33	01701016	Outer Support Side Angle (right)	1
34	03001366	Capillary Assy	1
35	01231041P	Partition Wall	1
36	02121009P	Indoor Side Wall (right)	1
37	01701014P	Indoor Fan Motor Support	1
38	1501180205	Indoor Fan Motor	1
39	00101091	Compressor and fittings	1
40	none	Overload Protector	0
41	03021187	4-way Valve	1
42	430004032	4-way Valve	1
43	01201026P	Chassis Assy	1
44	07100164	Condensate Drain Valve	1
45	12411904	Foam Condensate Tray	1
46	02121012	Heat Insulation Plate	1
47	4300040026	4 Way Valve Fittings	1
48	01401914	Control Box Assy	1
49	33000017	Capacitor	1
50	43110269	Transformer	1
51	33010020	Capacitor	1
52	33010026	Capacitor CBB61 2.5uF/450V	1
53	42011103	Terminal Board 2-8	2
54	01411050	Junction Box	1
55	02111009	Heater Wiring Plate	1
56	30032020	Main Control Circuit Board 1	1
57	01251015	Junction Box Plate	1
58	30032023	Main Relay/Power Circuit Board 2	1
59	42010037	Connector 5EHDV-02P	1
60	42010039S	Connector 5EHDV-07P	1
61	30542007	PCB	1
62	01361008P	Baffle Plate	1
63	20161238	Remote Board	1

